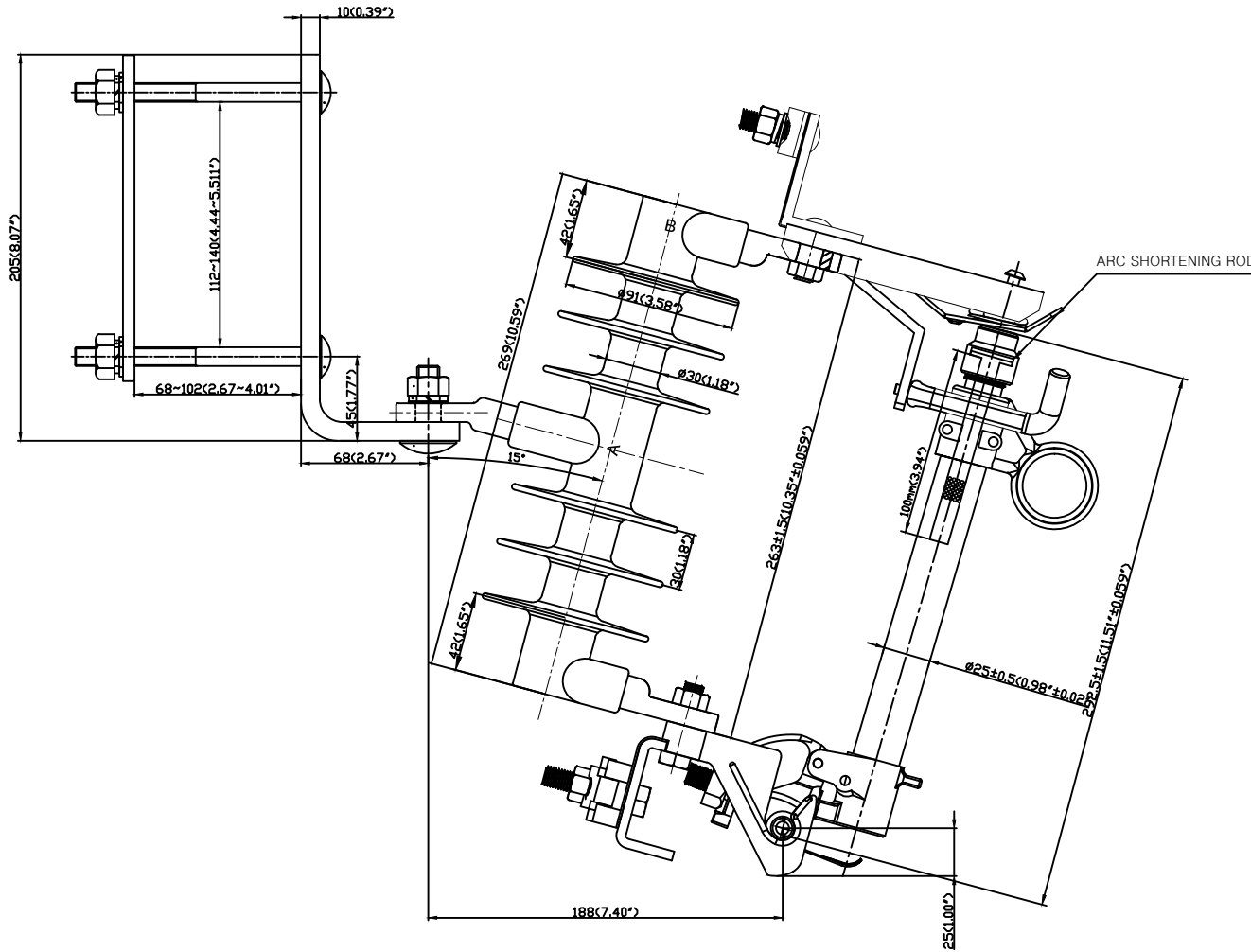


CATALOG NO. CSNL15-BP1-100D

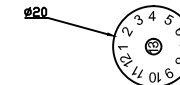
NO.	DESCRIPTION	DWG. NO.	MATERIAL	Q'TY	FINISH/SIZE	NOTE



TYPE		CSNL15-BP1-100D			
Rated Voltage (kV)		15			
Max. Rated Current (A)		300			
BIL (kV)		125			
Power Frequency Voltage (DRY)(kV)		42			
Power Frequency Voltage (WET)(kV)		36			
Impulse Withstand Voltage (WET)(kV)		125			
Creepage Distance (mm) (Min.)		370			
Rated Continuous Current (A)		100			
Interrupting Capacity	Type	A	B	C	D
	Symmetrical(kA)	4.5	5.0	7.1	8.0
	Asymmetrical(kA)	6.3	8.0	10.0	12.0

NOTE:

- All dimensions are measure after hot galvanized.
- The Tolerance unless otherwise note dimension shall be as follows:  
 $\pm(0.04d+1.5)$ mm when  $d < 300$ mm  
 $\pm(0.025d+6)$ mm when  $d > 300$ mm with a maximum of 50mm
- The Cutouts are supplied with galvanized steel bracket
- Thickness of Hot Galvanized : 80  $\mu$ m↑(min)
- Fiberglass rod are made from epoxy resin.
- Fittings are made from galvanized steel or stainless steel.(choice by buyer)  
 - Terminal end fitting, channel, Arc hook : Steel or STS  
 - Hinge part : Brass or STS
- Should not appear defects such as tear, dehiscence, burr, swelling, scratch in the housing.
- Should be Marked Date(A point) and Compay(B point) Logo on the housing surface.



<Date Logo>



<Company Logo>

NO.	DATE	REVISIONS	DESIGNED	APPROVED	REMARKS	DRAWN BY	DESIGNED BY	CHECKED BY	APPROVED BY	SCALE	DATE	NAME	REF.NO.	SHEET NO
3						J.H.PARK			C.H.PARK	1/1			Polymer Cutout Switch for Distribution 15kV, 100A Cutout Switch	
2						JUNE.14.2017			JUNE.14.2017					
1/R	06/14/2017	INITIAL RELEASE	J.H.PARK	C.H.PARK								REF.NO.		SHEET NO
NO.	DATE	REVISIONS	DESIGNED	APPROVED	REMARKS							DWG.NO.	CSNL15-BP1-100D	