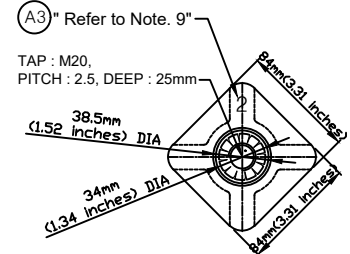
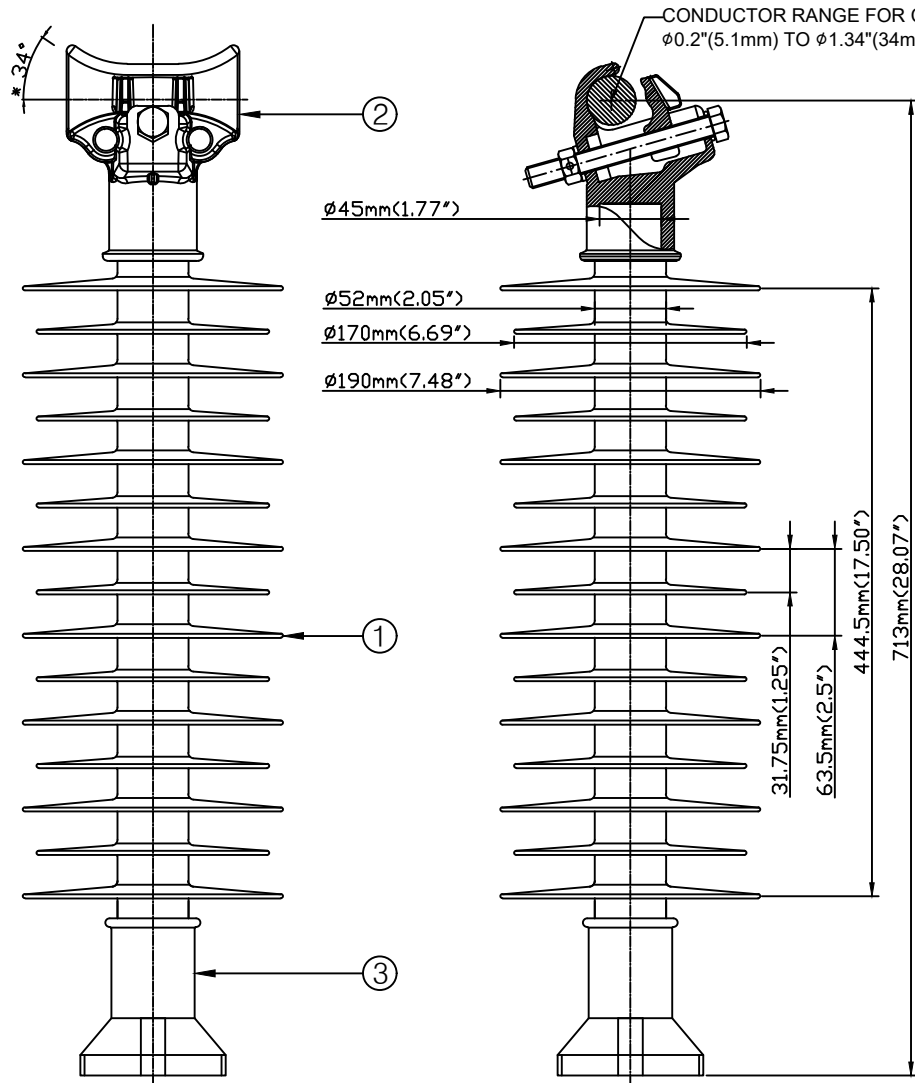


# CATALOG NO. LPSC-69SK-HP-M20

REVISIONS					
REV I/R	LOCATION	NOTICE	DSN BY	APP BY	DATE
		INITIAL RELEASE	J.H. PARK	C.H. PARK	02/15/2017
A		1. ADDED GALVANIZING THICKNESS 2. NOTE 9 ADDED MARKING 3. ADDED MARKING	B.J. KIM	C.H. PARK	08/19/2022



**DIMENSIONS:**

LEAKAGE DISTANCE	2,330 mm
DRY ARCING DISTANCE	570 mm
SHEDS Q'TY	15 PCS

**MECHANICAL VALUES:**

SPECIFIED CANTILEVER LOAD	2,800 LB (12.5 kN)
Max. DESIGN CANTILEVER LOAD	1,400 LB (6.5 kN)
TENSILE STRENGTH	5,000 LB (22.25 kN)

**ELECTRICAL VALUES:**

Low-Freq. FLASHOVER-DRY	230 kV
Low-Freq. FLASHOVER-WET	200 kV
IMPULSE FLASHOVER-POS	380 kV
IMPULSE FLASHOVER-NEG	470 kV
Low-Freq. WITHSTAND-DRY	180 kV
Low-Freq. WITHSTAND-WET	160 kV
IMPULSE WITHSTAND-POS	345 kV
IMPULSE WITHSTAND-NEG	430 kV

**PACKING INFORMATION:**

NET WEIGHT EACH	19.95 LB (9.05 KG)
NO. IN STANDARD PACKAGE	1 PCS

**NOTE:**

- TOP END FITTING IS MADE FROM SPHEROIDAL GRAPHITE CAST IRON.
- BASE END FITTING IS MADE FROM CARBON STEEL FORGED & GALVANIZED.
- FIBERGLASS ROD IS MADE FROM EPOXY RESIN (ECR).
- STUD BASE DIMENSIONS ARE IN ACCORDANCE WITH ANSI C29.18
- THE DIA. OF FRP ROD IS 45mm(1.77inches) SOLID.
- BASE AND INSULATOR ASSEMBLED WITH M20 BOLT AND WASHER.
- THE TOLERANCE ON ALL DIMENSIONS SHALL BE AS FOLLOWS:  
 $\pm(0.04d+1.5)\text{mm}$  when  $d < 300\text{mm}$   
 $\pm(0.025d+6)\text{mm}$  when  $d > 300\text{mm}$  with a maximum of 50mm

- (A1) 8. THE THICKNESS OF HOT DIP GALVANIZING SHALL BE MINIMUM 79um ACCORDING TO ASTM A 153.
- (A2) 9. MARKING : "2"

3	STUD BASE (69KV, M20)	1	S20C	
2	K-CLAMP (FOR 69KV)	1	AC4C-H	
1	성형품 (69KV)	1	SILICONE	

REPLACEABLE MATERIAL	NO	PART NAME	EA	MATERIAL	DWG NO
<b>PART LISTS</b>					
ORIGINAL DWG	COMMON TOLERANCE DECIMAL ANGLE FRACTION	DATE 08/19/2022	<b>HM Corporation</b>		
		APP DIVISION R&D Team			
	MATERIAL	CHK BY JS. PARK APP BY CH. PARK	<b>POLYMER LINE POST INSULATOR (69KV HP SPECIAL CLAMP)</b>		
		DWG BY BJ. KIM CHK BY			
	HEAT TREATMENT	DSN BY CHK BY	TITLE POLYMER LINE POST INSULATOR (69KV HP SPECIAL CLAMP)		
RELEVANT DWG	APPLICABLE ITEM	DWG DIVISION R&D Team	SIZE A3	DWG NO 2010002000	
PART NO		CORROSION PROTECTION	SCALE 1:1		
			UNIT mm		
			WEIGHT		