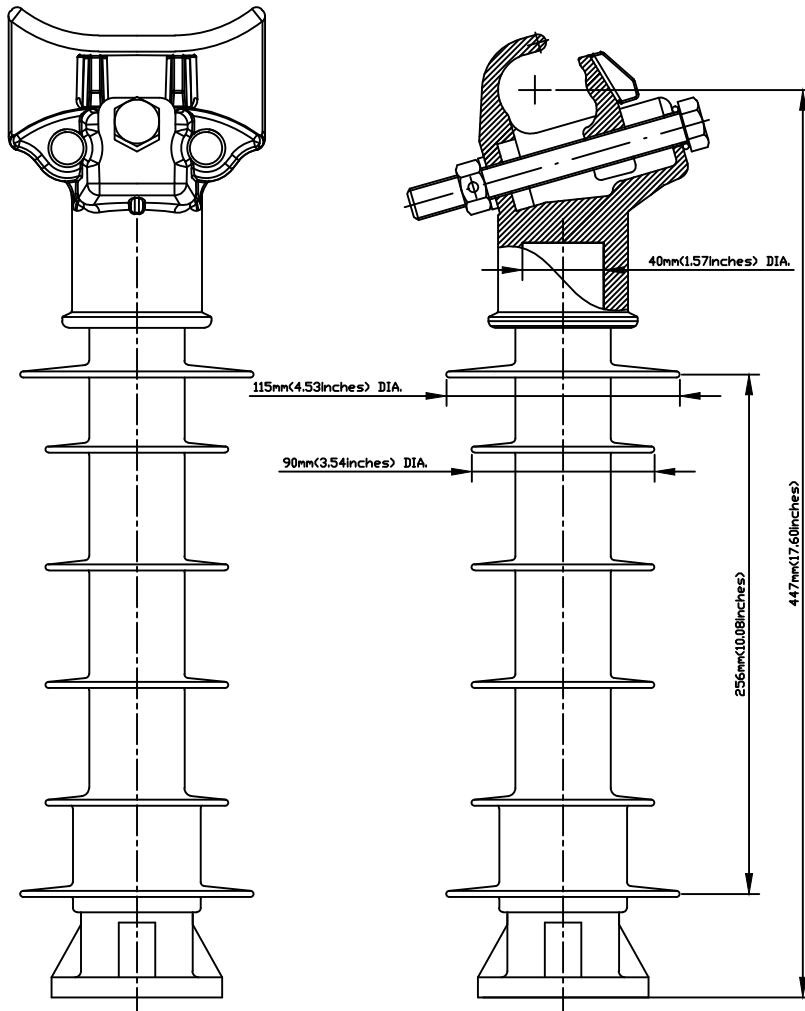


NO.	DESCRIPTION	DWG. NO.	MATERIAL	Q'TY	FINISH/SIZE	NOTE



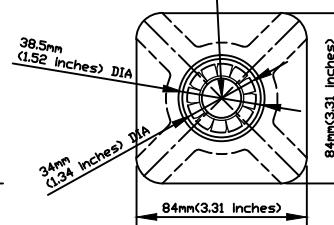
NOTE:

1. TOP END FITTING IS MADE FROM GRAVITY CASTING ALUMINUM ALLOY & ANODIZED.
2. BASE END FITTING IS MADE FROM CARBON STEEL FORGED & GALVANIZED.
3. FIBERGLASS ROD IS MADE FROM EPOXY RESIN.
4. CLAMP AND STUD BASE DIMENSIONS ARE IN ACCORDANCE WITH ANSI C29.18.
5. THE DIA. OF FRP ROD IS 40mm(1.57inches) SOLID.
6. BASE AND INSULATOR ASSEMBLED WITH M20 BOLT AND WASHER.
7. THE TOLERANCE ON ALL DIMENSIONS SHALL BE AS FOLLOWS:

$\pm(0.04d+1.5)$ mm when $d<300$ mm

$\pm(0.025d+6)$ mm when $d>300$ mm with a maximum of 50mm

TAP : M20,
PITCH : 2.5, DEEP : 25mm



DIMENSIONS

LEAKAGE DISTANCE	551 mm(21.69 inches)
DRY ARCING DISTANCE	313 mm(12.32 inches)
SHEDS Q'TY	6 PCS

MECHANICAL VALUES

SPECIFIED CANTILEVER LOAD	12.5 kN(2,800 LB)
Max. DESIGN CANTILEVER LOAD	6 kN(1,350 LB)
TENSILE STRENGTH	22 kN(5,000 LB)

ELECTRICAL VALUES

Low-Freq. FLASHOVER-DRY	122 kV
Low-Freq. FLASHOVER-WET	103 kV
IMPULSE FLASHOVER-POS	208 kV
IMPULSE FLASHOVER-NEG	271 kV

RADIO INFLUENCE VOLTAGE DATA

60 Hz TEST VOLTAGE	15 kV
MAXIMUM RIV @ 1,000kHz	100 uV

PACKING INFORMATION

NET WEIGHT EACH	7.8 kg
NO. IN STANDARD PACKAGE	4 PCS

NO.	DATE	REVISIONS	DESIGNED	APPROVED	REMARKS	DRAWN BY	DESIGNED BY	CHECKED BY	APPROVED BY	SCALE	DATE	NAME	LINE POST INSULATOR FOR TRANSMISSION	
3						J.H.PARK			C.H.PARK	1/1			E	25kV K-CLAMP LINE POST INSULATOR
2						FEB.15.2017			FEB.15.2017					
1/R	02/15/2017	INITIAL RELEASE	J.H.PARK	C.H.PARK								REF.NO.		SHEET NO
NO.	DATE	REVISIONS	DESIGNED	APPROVED	REMARKS							DWG.NO.	LPSC-25SK-M20	