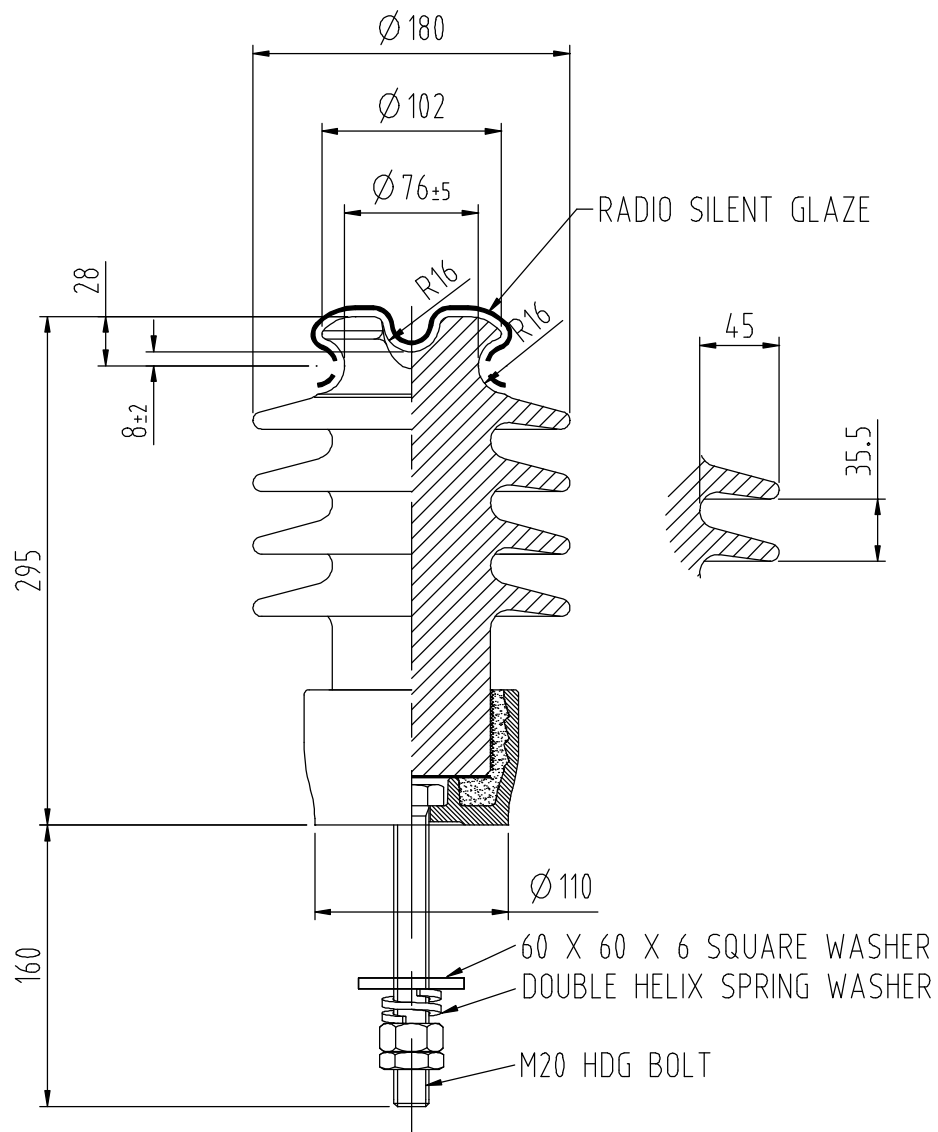


ALL DIMENSIONS IN MILLIMETRES - DO NOT SCALE - IF IN DOUBT PLEASE ASK



Technical Specification

	DESIGNED VALUES
<u>SYSTEM HIGHEST VOLTAGE</u>	12 kV
<u>WITHSTAND TEST VOLTAGES</u>	
a. Power frequency – wet (Vertical)	55 kV
b. Power frequency – wet (Horizontal)	60 kV
c. Power frequency – dry	90 kV
d. Lightning Impulse – dry (Calculated)	95 kV
<u>FLASHOVER TEST VOLTAGES</u>	
a. Power frequency – wet (Vertical)	65 kV
b. Power frequency – wet (Horizontal)	70 kV
c. Power frequency – dry	93 kV
<u>MINIMUM FAILING LOADS</u>	
a. Cantilever (Upright)	17.5 kN
<u>CREEPAGE DISTANCES</u>	
a. Total	420 mm
b. Protected	150 mm
c. Flashover	172 mm
Gross weight	8.2 kg
Pollution Performance N* (ESAA Publication D (b) 19-1975 )	= --

Issue	Mod. No.	Date
F	3365	4.11.11
E	3342	19.8.11
D	3207	31.5.07
C	3205	20.4.07
B	3175	26.2.07

Drawn J.Bain  
Date 20.4.2006

NEW ZEALAND INSULATORS **nzi** TEMUKA

NEW ZEALAND INSULATORS LTD  
Tel: +64-3-687 8100  
Fax: +64-3-615 8125  
e-mail: sales@nzinsulators.co.nz



**12kV TIE TOP LINE POST**  
**FIXED LENGTH STUD TYPE**

**D632-0564/F**