



This updated & expanded catalogue showcases the entire range of products that New Zealand Insulators is offering ex-stock, in 2013.

You'll find an expanded range of NZI line posts, a wider offering of DTR/Avon/Fulton brands, a complete range of Payer preforms, Bussmann fuselinks, easily the most comprehensive family of fuseholders, as well as our entire LV range.

As you will see, we've been working hard to expand NZI's range proposition beyond just porcelain insulators – although these definitely still form the core of our offer.

Wholesalers will probably find the NZI 2013 LV Pocket Book more useful – which has Trade Prices listed. Copies of the Pocket Book are freely available through NZI or via our website.

This 2013 catalogue is available as a PDF both in its entirety, and by brand – online at nzinsulators.co.nz. PDF drawings for many of the products can also be downloaded.

As our product range continues to evolve during 2013, we'll use the 'NZI Network Updates' in ElectroLink magazine, to update you on developments.

Thank you all for supporting NZI. We've been winning back share, and I guarantee that you – our Customers – are the central focus of our business.

Greg Howell, General Manager
New Zealand Insulators Limited
Mobile 0275-605605
Email greg.howell@nzinsulators.co.nz

NZI BRAND made in Temuka

| | |
|-------------------------------|--------|
| NZI Reels, Spike & Bundles | 2-3 |
| NZI 510/511 & Bundles | 4-5 |
| NZI 11kV Insulators & Bundles | 6-11 |
| NZI 22kV Insulators | 13, 15 |
| NZI 33kV Insulators | 16-19 |
| NZI 66kV Insulators | 22 |
| NZI 110kV Insulators | 22 |
| NZI Standoffs | 23 |
| NZI Station Posts | 25 |
| NZI Guy Strains | 37 |
| NZI Lineguard Disconnects | 60 |
| NZI Mini Wedge Fuseholder | 60 |
| NZI Rewireable & HRC Cutouts | 62-63 |
| NZI Fuseholders | 67, 71 |
| NZI DMC Standoffs | 92 |
| NZI Busbar Supports | 93 |
| NZI Porcelain Connectors | 94 |
| NZI Porcelain Lampholders | 95 |
| NZI MCB Safety Bases | 96 |

AX BRAND made for NZI, multiple sources

| | |
|---------------------------------|-------|
| AX Spindles | 26-27 |
| AX Clevis Thimbles | 38 |
| AX Glass Discs for Distribution | 42 |

AVON INDUSTRIES made in Whangarei

| | |
|----------------------------------|-------|
| Avon Shackle Straps & U Shackles | 2 |
| Avon Line Hardware & Crucifix | 28-29 |
| Avon Earth Rods | 54 |

PAYER PREFORMS made in Canada

| | |
|----------------------------------|----|
| Payer Armour Rods | 31 |
| Payer Line Guards & Line Splices | 32 |
| Payer Aluminium Deadends | 33 |
| Payer Full Tension Deadends | 34 |
| Payer Neoprene Deadends | 35 |
| Payer Guy Grips & Guy Locks | 36 |

DTR ELECTRIC made in Korea

| | |
|-------------------------------|-------|
| DTR 15kV Polymer Line Posts | 12 |
| DTR 25kV Polymer Line Posts | 14 |
| DTR 35kV Polymer Line Posts | 20 |
| DTR 69kV Polymer Line Posts | 21 |
| DTR Station Posts | 24 |
| DTR Crucifix Standoff | 28 |
| DTR Polymer Strains & Bundles | 38-39 |
| DTR Suspension Strains | 40-41 |
| DTR Surge Arresters | 43-45 |
| DTR Polymer EDO Dropouts | 47 |

NGK STANGER made in Melbourne

| | |
|--------------------------|-------|
| NGK-S LV Isolators | 46 |
| NGK-S EDO Dropouts | 48 |
| NGK-S HVI Solid Links | 49 |
| NGK-S ABS & SF6 Switches | 50-51 |
| NGK-S FSD Disconnects | 61 |

FULTON INDUSTRIES made in Gosford

| | |
|--------------------------|-------|
| Fulton Scratch Brushes | 30 |
| Fulton Earth Rods | 52-53 |
| Fulton Earthing Pits | 55 |
| Fulton Bolted Connectors | 56-58 |
| Fulton Wedge Clamp | 59 |

COOPER BUSSMANN made in India/UK

| | |
|------------------------|--------------|
| Red Spot Fuseholders | 64, 66, 71 |
| Camaster Fuseholders | 64, 66, 71 |
| Bussmann HRC Fuselinks | 65-73, 76-91 |
| Bussmann DIN Switches | 75 |

EFEN SWITCHES made in Germany

| | |
|-------------------|----|
| Efen DIN Switches | 74 |
|-------------------|----|

AVON SHACKLES & NZI Reel BUNDLES



SHACKLE STRAPS & U SHACKLES

| Part Number | Description | Brand | Origin | Length (mm) | Width (mm) | Thick (mm) | Holes | HDG (mm) | Unit | Weight | Box Qty | Drawing |
|-----------------------|--|-------|--------|-------------|------------|------------|-------|--------------|------|--------|---------|---------|
| Shackle Straps | | | | | | | | | | | | |
| 537004 | Avon AA20001 Shackle Strap 7" | Avon | NZ | 180 | 32 | 3 | 14 | To 4680:2006 | Each | 140g | 100 | AA20001 |
| 537012 | Avon AA20009 Shackle Strap #11 | Avon | NZ | 170 | 30 | 2 | 14 | To 4680:2006 | Each | 85g | 200 | AA20009 |
| 537020 | Avon AA20011 Shackle Strap #8 Offset | Avon | NZ | 180 | 32 | 3 | 18 | To 4680:2006 | Each | 130g | 100 | AA20011 |
| U Shackles | | | | | | | | | | | | |
| 537039 | Avon AA23001 210 U Shackle Small | Avon | NZ | 85 | 32 | 3 | 14 | To 4680:2006 | Each | 160g | 100 | AA23001 |
| 537047 | Avon AA23002 205 U Shackle Large | Avon | NZ | 105 | 32 | 3 | 14 | To 4680:2006 | Each | 210g | 50 | AA23002 |
| 537063 | Avon AA23003 320 U Shackle Extra Large | Avon | NZ | 132 | 40 | 5 | 14 | To 4680:2006 | Each | 500g | 30 | AA23003 |

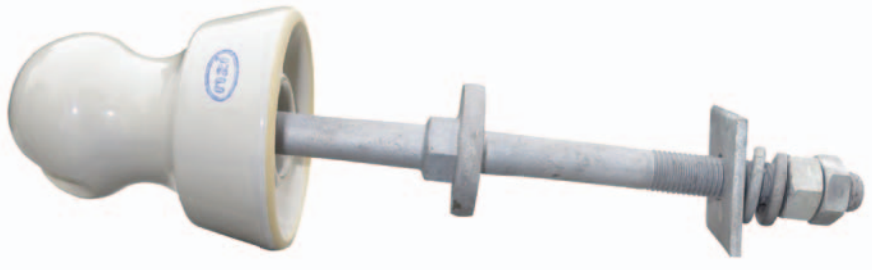
PRE-ASSEMBLED REEL BUNDLES

| Part Number | Description | Brands | Origin | Status | Unit | Weight | Box Qty |
|---|---|----------|--------|-----------|--------|--------|---------|
| Reel & Shackle Strap Bundles | | | | | | | |
| 102148 | NZI 210 Reel + Avon 7" Shackle Strap + 2 x M12 110 Bolt | NZI/Avon | NZ | Assembled | Bundle | 750g | 20 |
| 102180 | NZI 205 Reel + Avon 7" Shackle Strap + 2 x M12 110 Bolt | NZI/Avon | NZ | Assembled | Bundle | 1.1kg | 10 |
| Reel & U Shackle Bundles | | | | | | | |
| 102121 | NZI 210 Reel + Avon Small U Shackle + M12 110 Bolt | NZI/Avon | NZ | Assembled | Bundle | 550g | 20 |
| 102156 | NZI 205 Reel + Avon E/Large U Shackle + M12 110 Bolt | NZI/Avon | NZ | Assembled | Bundle | 1.2kg | 10 |

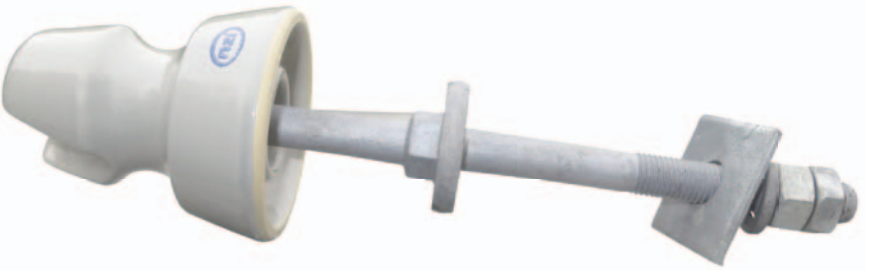


LV PORCELAIN REELS & SPIKE

| Part Number | Description | Brand | Origin | Rated | Groove | Load | Fixing | Glaze | Unit | Weight | Box Qty | Drawing |
|--------------|---------------------|-------|--------|-------|-----------|--------|-----------------|-------|------|--------|---------|-----------|
| Reels | | | | | | | | | | | | |
| 109029 | NZI 120 Reel | NZI | NZ | 650V | 13mm | 4.5kN | 14mm Diameter | Clear | Each | 130g | 30 | S1326 |
| 109207 | NZI 210 Reel | NZI | NZ | 650V | 10mm | 6kN | 17.5mm Diameter | Grey | Each | 220g | 80 | S1331 |
| 109061 | NZI 220 Reel | NZI | NZ | 650V | 19mm | 5.5kN | 17mm Diameter | Grey | Each | 295g | 80 | S1332 |
| 109088 | NZI 224 Trurip Reel | NZI | NZ | 650V | 25.5mm | 13.5kN | 17.5mm Diameter | Grey | Each | 385g | 34 | S1098 |
| 109010 | NZI 205 Reel | NZI | NZ | 3.3kV | 18mm | 10kN | 17.5mm Diameter | Grey | Each | 540g | 42 | S1330 |
| Spike | | | | | | | | | | | | |
| 100501 | NZI 103 Spike | NZI | NZ | | 16mm Hole | 4kN | Coach Screw | Grey | Each | 325g | 50 | D267-0502 |



510 + Cordeau Spindle + Washer



511 + Cordeau Spindle + Washer



Preassembled



Full AX Fittings



16/Box

PRE-ASSEMBLED LV INSULATOR BUNDLES

| Part Number | Description | Brands | Origin | Assembled? | Unit | Weight | Box Qty |
|-------------------|--|--------|--------|------------|--------|--------|---------|
| 510 Bundle | | | | | | | |
| 102164 | NZI 510 Insulator + AX 5/8 Cordeau Spindle + AX Oiled Leather Washer | NZI/AX | NZ | Assembled | Bundle | 1.1kg | 16 |
| 511 Bundle | | | | | | | |
| 102172 | NZI 511 Insulator + AX 5/8 Cordeau Spindle + AX Oiled Leather Washer | NZI/AX | NZ | Assembled | Bundle | 1.1kg | 16 |



LV PORCELAIN PIN-TYPE INSULATORS (TIE TOP)

| Part Number | Description | Brand | Origin | Groove | Top | Line Voltage | Colour | Thread | Unit | Weight | Box/Pallet | Drawing |
|----------------------------|----------------------|-------|--------|--------|---------|--------------|--------|--------------|------|--------|------------|---------|
| LV Pin-Type Tie Top | | | | | | | | | | | | |
| 102040 | NZI 510 (Round Top) | NZI | NZ | 26mm | Tie Top | 0.4kV-3kV | Grey | 5/8" Cordeau | Each | 580g | 30/1200 | S1003 |
| 102067 | NZI 511 (Square Top) | NZI | NZ | 32mm | Tie Top | 0.4kV-3kV | Grey | 5/8" Cordeau | Each | 600g | 30/1200 | S1656 |

| Part Number | Description | Brand | Origin | Length | Strength | Diameter | Head | Thread | Unit | Weight | Box/Pallet | Drawing |
|----------------------------|---------------------|-------|--------|-----------|----------|----------|-------|--------------|------|--------|------------|-----------|
| Spindle for 510/511 | | | | | | | | | | | | |
| 540358 | 5/8 Cordeau Spindle | AX | China | 118/145mm | 3.3kN | M16 | Steel | 5/8" Cordeau | Each | 485g | 30/1200 | D374-2009 |

| Part Number | Description | Brand | Origin | Detail | OD | Internal Diameter | Unit | Weight | Pack Qty |
|---------------------------|----------------|-------|--------|---------------|------|-------------------|------|--------|----------|
| Washer for 510/511 | | | | | | | | | |
| 540234 | Leather Washer | AX | NZ | Oiled Leather | 23mm | 5/8" (15.9mm) | Each | 1.2g | 90 |



1540



140B1



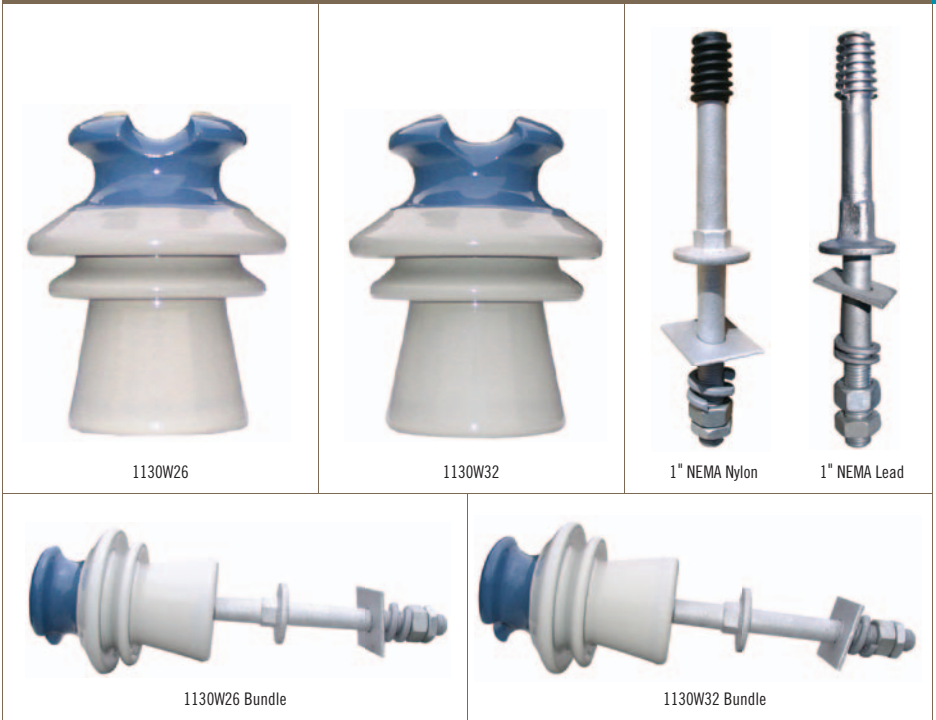
821



5/8" Cordeau

11KV PORCELAIN PIN-TYPE INSULATORS (TIE TOP)

| Part Number | Description | Brand | Origin | Creepage | Top | Groove | Colour | Thread | Unit | Weight | Box/ Pallet | Drawing |
|------------------------------|------------------------|-------|--------|-----------|---------|--------|--------|-----------------|------|--------|----------------|-----------|
| 1540 Pin-Type Tie Top | | | | | | | | | | | | |
| 104574 | NZI 1540W | NZI | NZ | 300mm | Tie Top | 32mm | Grey | 1 & 3/8" | Each | 2.0kg | 6/144 | S1071-24 |
| Spindle for 1540 | | | | | | | | | | | | |
| 540455 | AX 140B1 Spindle | AX | China | 171/134mm | 10kN | M20 | Lead | 1 & 3/8" | Each | 1.6kg | 12/480 | D374-2008 |
| Part Number | Description | Brand | Origin | Creepage | Top | Groove | Colour | Thread | Unit | Weight | Box Qty | Drawing |
| 821 Pin-Type Tie Top | | | | | | | | | | | | |
| 103608 | NZI 821 | NZI | NZ | 185mm | Tie Top | 23mm | Grey | 5/8" Cordeau | Each | 930g | 18 | S1310 |
| Spindle for 821 | | | | | | | | | | | | |
| 540358 | AX 5/8 Cordeau Spindle | AX | China | 118/145mm | 3.3kN | M16 | Steel | 5/8" Cordeau | Each | 485g | 30/1200 | D374-2009 |



11kV PORCELAIN PIN-TYPE INSULATORS (TIE TOP)

| Part Number | Description | Brand | Origin | Creepage | Top | Groove | Colour | Thread | Unit | Weight | Box/Pallet | Drawing |
|----------------------------|-------------------------------------|-------|--------|-----------|----------|----------|--------|-------------|------------------|--------|------------|-----------|
| 11kV Pin Insulators | | | | | | | | | | | | |
| 103160 | NZI 1130W (26mm Groove) | NZI | NZ | 250mm | Tie Top | 26mm | Grey | 1 Inch SLHT | Each | 1.5kg | 12/288 | M1022-14 |
| 104507 | NZI 1130W (32mm Groove) | NZI | NZ | 250mm | Tie Top | 32mm | Grey | 1 Inch SLHT | Each | 1.5kg | 12/288 | M1022-17 |
| Part Number | Description | Brand | Origin | Length | Strength | Diameter | Head | Thread | Unit | Weight | Box Qty | Drawing |
| Spindles for 1130 | | | | | | | | | | | | |
| 536164 | AX Nema 1" Nylon Spindle | AX | China | 152/146mm | 6kN | M20 | Nylon | 1 Inch SLHT | Each | 1.0kg | 12/288 | D374-2134 |
| 536326 | AX Nema 1" Lead Spindle | AX | China | 152/146mm | 6kN | M20 | Lead | 1 Inch SLHT | Each | 1.1kg | 12/288 | D374-2118 |
| 1130 Bundles | | | | | | | | | | | | |
| 103837 | NZI 1130W26 + AX Nema Nylon Spindle | | | | | | | | Assembled Bundle | 2.5kg | 6 | |
| 103934 | NZI 1130W32 + AX Nema Nylon Spindle | | | | | | | | Assembled Bundle | 2.5kg | 6 | |



Made in NZ

11/285W32 with 32mm groove and radio silent glaze



11/250W26 with 26mm groove and no radio silent glaze



11/250W26 Economy Option

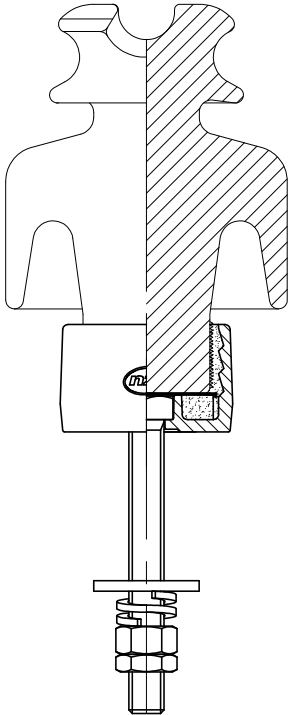


11/285W32

11kV PORCELAIN LINE POST INSULATORS (TIE TOP)

| Part Number | Description | Brand | Origin | Creepage | Top | Groove | kN | Stud | Glaze | Unit | Weight | Box/ Pallet | Drawing |
|--|---------------------------|-------|--------|----------|---------|--------|----|-----------|-------|------|--------|-------------|-----------|
| 11kV Economy* Tie Top Line Post | | | | | | | | | | | | | |
| 464740 | NZI 11kV 250W26 Line Post | NZI | NZ | 250mm | Tie Top | 26mm | 10 | 160mm M20 | Grey | Each | 6.5kg | 3/144 | D632-0578 |
| * economy option with lower creepage, no radio silent, 26mm groove, 3mm washer + full nut only, in a cardboard box | | | | | | | | | | | | | |
| 11kV Tie Top Line Post | | | | | | | | | | | | | |
| 460818 | NZI 11kV 285W32 Line Post | NZI | NZ | 285mm | Tie Top | 32mm | 10 | 160mm M20 | Grey | Each | 7.0kg | 3/144 | D632-0551 |





11/305W32 Fog – March 2013 Release



11/420W32 Ultra Premium

11KV PORCELAIN LINE POST INSULATORS (TIE TOP)

| Part Number | Description | Brand | Origin | Creepage | Top | Groove | kN | Stud | Glaze | Unit Weight | Box/ Pallet | Drawing |
|--|---------------------------|-------|--------|----------|---------|--------|------|-----------|-------|-------------|-------------|-----------|
| 11kV Fog Profile Tie Top Line Post (March 2013) | | | | | | | | | | | | |
| 465410 | NZI 11kV 305W32 Line Post | NZI | NZ | 305mm | Tie Top | 32mm | 7 | 160mm M20 | Grey | Each 6.5kg | 2/80 | D632-0579 |
| 11kV Ultra Premium Tie Top Line Post | | | | | | | | | | | | |
| 464314 | NZI 11kV 420W32 Line Post | NZI | NZ | 420mm | Tie Top | 32mm | 17.5 | 190mm M20 | Grey | Each 8.4kg | 1/40 | D632-0564 |

NZI 1132T Pin-Type Clamp Top & Spindle



1132T

6/Box

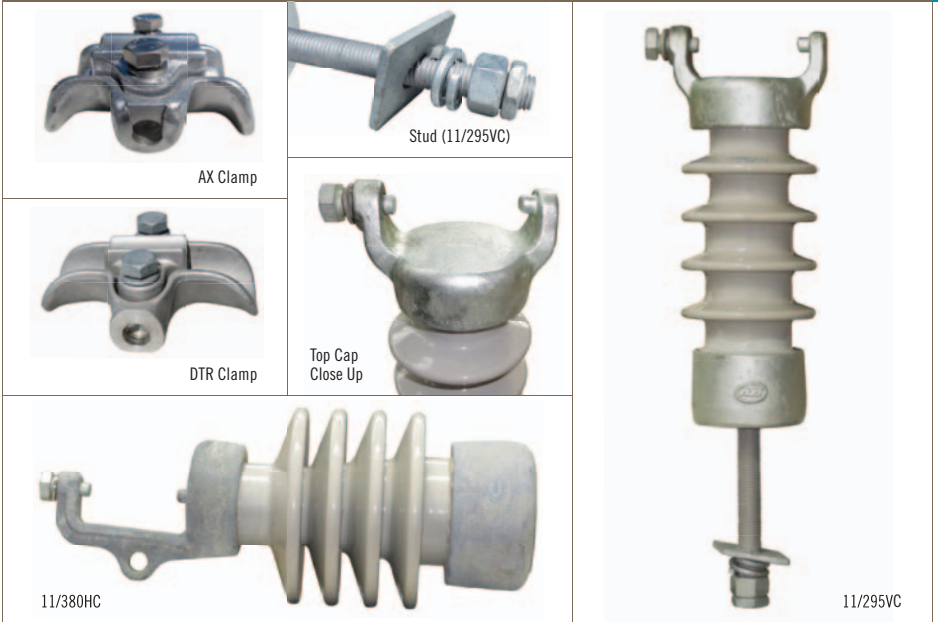
R23 Steel Head

11kV PORCELAIN PIN-TYPE INSULATOR (CLAMP TOP)

| Part Number | Description | Brand | Origin | Creepage | Top | Clamp | Glaze | Thread | Unit Weight | Box/ Pallet | Drawing |
|--|--------------------------|-------|--------|-----------------|--------------|----------|--------------|---------------------|-------------|-------------|-----------|
| 11kV Pin-Type Clamp Top | | | | | | | | | | | |
| 104175 | NZI 1132T Insulator | NZI | NZ | 250mm | Cap & Pintle | Separate | Grey | BS Small Steel Head | Each 3.6kg | 6/144 | D351-0502 |
| Part Number | Description | Brand | Origin | Conductor Range | Length | Width | Construction | Unit Weight | Box Qty | Drawing | |
| Clamp for 1132T (sold separately) | | | | | | | | | | | |
| 465283 | AX 10-38mm Special Clamp | AX | NZ | 10-38mm | 127mm | 98mm | Aluminium | Each 450g | 12 | D330-0503 | |
| Part Number | Description | Brand | Origin | Length | Strength | Diameter | Head | Thread | Unit Weight | Box/ Pallet | Drawing |
| Spindle for 1132T | | | | | | | | | | | |
| 540528 | AX R23 Spindle | AX | UK | 170/130mm | 10kN | M18 | Steel | BS Small Steel Head | Each 1.1kg | 12/240 | D374-2027 |



NZI 11kV LINE POSTS Clamp Top



11kV PORCELAIN LINE POST INSULATORS (CLAMP TOP)

| Part Number | Description | Brand | Origin | Creepage kN | Top | Clamp | Glaze | Stud | Unit | Weight | Box/Pallet | Drawing |
|--|--------------------------|-------|--------|-------------|-----|--------------|----------|----------|----------|--------|------------|----------------|
| 11kV Vertical Clamp Line Post | | | | | | | | | | | | |
| 464589 | NZI 11kV 295VC Line Post | NZI | NZ | 295mm | 9.5 | Cap & Pintle | Separate | Grey M20 | 160mm | Each | 7.0kg | 3/72 D724-0526 |
| 11kV Horizontal Clamp Line Post | | | | | | | | | | | | |
| 462411 | NZI 11kV 380HC Line Post | NZI | NZ | 380mm | 12 | Cap & Pintle | Separate | Grey | Separate | Each | 12.0kg | 1/40 D725-0510 |

| Part Number | Description | Brand | Origin | Conductor Length Range | Width | Construction | Unit | Weight | Box Qty | Drawing |
|--|----------------------------|-------|--------|------------------------|-------|----------------|------|--------|---------|-------------|
| Clamp options for 11kV Line Posts (sold separately) | | | | | | | | | | |
| 461792 | AX 10-38mm Trunnion Clamp | AX | NZ | 10-38mm | 127mm | 98mm Aluminium | Each | 450g | 12 | D330-0501 |
| 553727 | DTR 13-27mm Trunnion Clamp | DTR | Korea | 13-27mm | 135mm | 98mm Aluminium | Each | 650g | 6 | DTR-ATC-106 |

| Part Number | Description | Brand | Origin | Length | Diameter | Fixings | Unit | Weight | Box Qty | Drawing |
|--|-------------------------|-------|--------|--------|----------|-------------|------|--------|---------|-----------|
| Stud options for 11/380HC Horizontal Post (sold separately) | | | | | | | | | | |
| 465291 | AX 45mm Line Post Stud | AX | NZ | 45mm | M20 | SW/FN | Each | 400g | 24 | D330-2013 |
| 465305 | AX 160mm Line Post Stud | AX | NZ | 160mm | M20 | FW/SW/FN/HN | Each | 710g | 18 | D330-2022 |
| 465313 | AX 205mm Line Post Stud | AX | NZ | 205mm | M20 | FW/SW/FN/HN | Each | 800g | 12 | D330-2059 |

DTR 15kV LINE POSTS (Tie Top & Clamp Top)



15kV POLYMER LINE POST INSULATORS (TIE TOP & CLAMP TOP)

| Part Number | Description | Brand | Origin | Creepage kN | Top | Colour | Clamp & Stud | Unit | Weight | Box/ Pallet | Drawing | |
|--|---|-------|--------|-------------|------|-----------|--------------|----------|--------|-------------|---------|---------------|
| 15kV Vertical Line Posts | | | | | | | | | | | | |
| 553239 | DTR 15kV Vertical Tie Top Line Post | DTR | Korea | 312mm | 12.5 | Tie Top | Grey | Separate | Each | 4.0kg | 6/120 | DTR-LPCN-15SK |
| 553093 | DTR 15kV Vertical Clamp Top Line Post | DTR | Korea | 312mm | 12.5 | Clamp Top | Grey | Separate | Each | 4.4kg | 6/120 | DTR-LPV-15SK |
| 15kV Horizontal Clamp Line Post | | | | | | | | | | | | |
| 553107 | DTR 15kV Horizontal Clamp Top Line Post | DTR | Korea | 312mm | 12.5 | Clamp Top | Grey | Separate | Each | 4.3kg | 6/120 | DTR-LPH-15SK |

| Part Number | Description | Brand | Origin | Conductor Range | Length | Width | Construction | Unit | Weight | Box Qty | Drawing |
|--|----------------------------|-------|--------|-----------------|--------|-------|--------------|------|--------|---------|-------------|
| Clamp options for DTR 15kV Line Posts (sold separately) | | | | | | | | | | | |
| 553727 | DTR 13-27mm Trunnion Clamp | DTR | Korea | 13-27mm | 135mm | 98mm | Aluminium | Each | 650g | 6 | DTR-ATC-106 |
| 461792 | AX 10-38mm Trunnion Clamp | AX | NZ | 10-38mm | 127mm | 98mm | Aluminium | Each | 450g | 12 | D330-0501 |

| Part Number | Description | Brand | Origin | Length | Diameter | Fixings | Unit | Weight | Box/ Pallet | Drawing |
|---|--------------------------|-------|--------|--------|----------|----------|------|--------|-------------|-----------|
| Stud options for DTR 15kV Line Posts (sold separately) | | | | | | | | | | |
| 553662 | DTR 48mm Line Post Stud | DTR | Korea | 48mm | M20 | FW/SW/FN | Each | 300g | 96 | STD48M20 |
| 553581 | DTR 160mm Line Post Stud | DTR | Korea | 160mm | M20 | FW/SW/FN | Each | 700g | 72 | STD160M20 |
| 553697 | DTR 200mm Line Post Stud | DTR | Korea | 200mm | M20 | FW/SW/FN | Each | 850g | 48 | STD200M20 |
| Gain Bases for DTR 15kV Line Posts (sold separately) | | | | | | | | | | |
| 553174 | DTR Vertical Gain Base | DTR | Korea | 300mm | | | Each | 4.5kg | 6/60 | DTR-GBV |
| 553182 | DTR Horizontal Gain Base | DTR | Korea | 300mm | | | Each | 3.3kg | 6/60 | DTR-GBH |



22kV PORCELAIN PIN INSULATOR (TIE TOP)

| Part Number | Description | Brand | Origin | Creepage | Top | Groove | Colour | Thread | Unit | Weight | Box/ Pallet | Drawing |
|-------------------------------|---------------------------------|-------|--------|-----------|----------|----------|--------|-----------|------|--------|-------------|-----------|
| 22kV Pin-Type Tie Top | | | | | | | | | | | | |
| 106941 | NZI 22/450 | NZI | NZ | 450mm | Tie Top | 32mm | Grey | Pattern C | Each | 3.6kg | 6/120 | S2466-1 |
| Part Number | Description | Brand | Origin | Length | Strength | Diameter | Head | Thread | Unit | Weight | Box/ Pallet | Drawing |
| Spindles for ALP22/450 | | | | | | | | | | | | |
| 538213 | AX M20 Pattern C Spindle (20mm) | AX | China | 200/165mm | 10kN | M20 | Lead | Pattern C | Each | 2.2kg | 6/240 | D374-2084 |
| 538205 | AX M24 Pattern C Spindle (24mm) | AX | China | 200/165mm | 11kN | M24 | Lead | Pattern C | Each | 2.4kg | 6/240 | D374-2085 |

DTR 25kV LINE POSTS (Tie Top & Clamp Top)

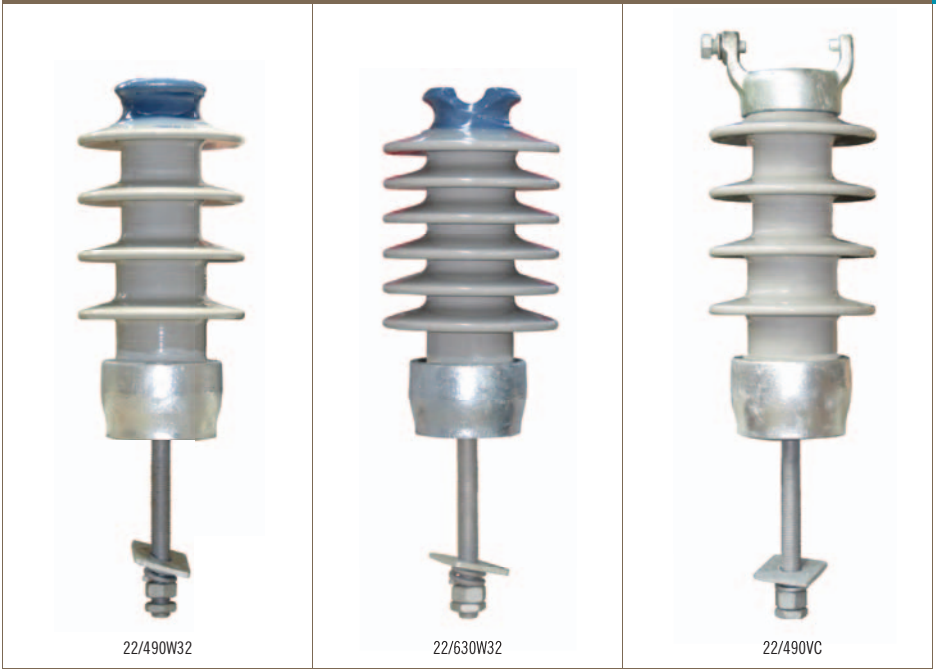


25KV POLYMER LINE POST INSULATORS (TIE TOP & CLAMP TOP)

| Part Number | Description | Brand | Origin | Creepage kN | Top | Colour | Clamp & Stud | Unit | Weight | Box/ Pallet | Drawing | |
|--|---------------------------------------|-------|--------|-------------|------|-----------|--------------|----------|--------|-------------|---------|---------------|
| 25kV Vertical Line Posts | | | | | | | | | | | | |
| 553247 | DTR 25kV Vertical Tie Top Line Post | DTR | Korea | 506mm | 12.5 | Tie Top | Grey | Separate | Each | 4.1kg | 6/120 | DTR-LPFN-25SK |
| 553115 | DTR 25kV Vertical Clamp Top Line Post | DTR | Korea | 506mm | 12.5 | Clamp Top | Grey | Separate | Each | 4.7kg | 6/120 | DTR-LPV-25SK |
| 25kV Horizontal Clamp Line Post | | | | | | | | | | | | |
| 553123 | DTR 25kV Hor Clamp Top Line Post | DTR | Korea | 506mm | 12.5 | Clamp Top | Grey | Separate | Each | 4.3kg | 6/120 | DTR-LPH-25SK |

| Part Number | Description | Brand | Origin | Conductor Range | Length | Width | Construction | Unit | Weight | Box Qty | Drawing |
|--|----------------------------|-------|--------|-----------------|--------|-------|--------------|------|--------|---------|-------------|
| Clamp options for DTR 25kV Line Posts (sold separately) | | | | | | | | | | | |
| 553727 | DTR 13-27mm Trunnion Clamp | DTR | Korea | 13-27mm | 135mm | 98mm | Aluminium | Each | 650g | 6 | DTR-ATC-106 |
| 461792 | AX 10-38mm Trunnion Clamp | AX | NZ | 10-38mm | 127mm | 98mm | Aluminium | Each | 450g | 12 | D330-0501 |

| Part Number | Description | Brand | Origin | Length | Diameter | Fixings | Unit | Weight | Box/ Pallet | Drawing | |
|---|--------------------------|-------|--------|--------|----------|----------|------|--------|-------------|-----------|--|
| Stud options for DTR 25kV Line Posts (sold separately) | | | | | | | | | | | |
| 553662 | DTR 48mm Line Post Stud | DTR | Korea | 48mm | M20 | FW/SW/FN | Each | 300g | 96 | STD48M20 | |
| 553581 | DTR 160mm Line Post Stud | DTR | Korea | 160mm | M20 | FW/SW/FN | Each | 700g | 72 | STD160M20 | |
| 553697 | DTR 200mm Line Post Stud | DTR | Korea | 200mm | M20 | FW/SW/FN | Each | 850g | 48 | STD200M20 | |
| Gain Bases for DTR 25kV Line Posts (sold separately) | | | | | | | | | | | |
| 553174 | DTR Vertical Gain Base | DTR | Korea | 300mm | | | Each | 4.5kg | 6/60 | DTR-GBV | |
| 553182 | DTR Horizontal Gain Base | DTR | Korea | 300mm | | | Each | 3.3kg | 6/60 | DTR-GBH | |



22/490W32

22/630W32

22/490VC

22KV PORCELAIN LINE POST INSULATORS (TIE TOP & CLAMP TOP)

| Part Number | Description | Brand | Origin | Creepage | kN | Top | Groove | Glaze | Stud | Unit | Weight | Box/ Drawing | Pallet |
|--------------------------------|---|-------|--------|----------|------|---------|--------|-------|-----------|------|--------|--------------|-----------|
| 22kV Tie Top Line Posts | | | | | | | | | | | | | |
| 464619 | NZI 22kV 490W32 Line Post | NZI | NZ | 490mm | 10 | Tie Top | 32mm | Grey | 190mm M20 | Each | 9.0kg | 1/40 | D632-0573 |
| 464368 | NZI 22kV 630W32 Ultra Premium Line Post | NZI | NZ | 630mm | 17.5 | Tie Top | 32mm | Grey | 190mm M20 | Each | 12.4kg | 1/40 | D632-0563 |

| Part Number | Description | Brand | Origin | Creepage | kN | Top | Clamp | Glaze | Stud | Unit | Weight | Box/ Drawing | Pallet |
|--------------------------------------|--------------------------|-------|--------|----------|----|--------------|----------|-------|-----------|------|--------|--------------|-----------|
| 22kV Vertical Clamp Line Post | | | | | | | | | | | | | |
| 465321 | NZI 22kV 490VC Line Post | NZI | NZ | 490mm | 12 | Cap & Pintle | Separate | Grey | 190mm M20 | Each | 14.0kg | 1/40 | D724-0527 |

| Part Number | Description | Brand | Origin | Conductor Range | Length | Width | Construction | Unit | Weight | Box Qty | Drawing |
|---|----------------------------|-------|--------|-----------------|--------|-------|--------------|------|--------|---------|-------------|
| Clamp options for 22/490VC (sold separately) | | | | | | | | | | | |
| 461792 | AX 10-38mm Trunnion Clamp | AX | NZ | 10-38mm | 127mm | 98mm | Aluminium | Each | 450g | 12 | D330-0501 |
| 553727 | DTR 13-27mm Trunnion Clamp | DTR | Korea | 13-27mm | 135mm | 98mm | Aluminium | Each | 650g | 6 | DTR-ATC-106 |

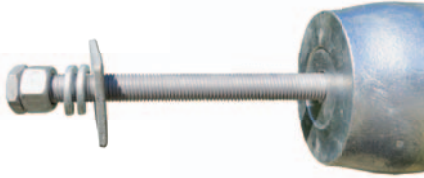
NZI 33kV PIN-TYPE Tie Top



33KV PORCELAIN PIN-TYPE INSULATORS (TIE TOP)

| Part Number | Description | Brand | Origin | Creepage | Top | Groove | Colour | Thread | Unit | Weight | Box/ Pallet | Drawing |
|--|----------------------|-------|--------|-----------|----------|----------|--------|---------------------|------|--------|-------------|-----------|
| 33kV Pin-Type Tie Top | | | | | | | | | | | | |
| 112526 | NZI 3370 | NZI | NZ | 500mm | Tie Top | 32mm | Grey | BS Large Steel Head | Each | 5.2kg | 3/96 | D327-0503 |
| 115029 | NZI 33/920 | NZI | NZ | 920mm | Tie Top | 32mm | Grey | BS Large Steel Head | Each | 16.2kg | 1/32 | D718-0503 |
| 44kV Pin-Type Tie Top | | | | | | | | | | | | |
| 111376 | NZI 4490 | NZI | NZ | 665mm | Tie Top | 38mm | Grey | BS Large Steel Head | Each | 9.5kg | 3/45 | D343-0504 |
| Part Number | Description | Brand | Origin | Length | Strength | Diameter | Head | Thread | Unit | Weight | Box/ Pallet | Drawing |
| Spindle for all three 33kV Insulators | | | | | | | | | | | | |
| 540463 | AX R31 Steel Spindle | AX | China | 305/178mm | 10kN | M22 | Steel | BS Large Steel Head | Each | 2.9kg | 6/288 | D374-2023 |
| Shorter Spindle option for 3370 only | | | | | | | | | | | | |
| 540706 | AX R29 Steel Spindle | AX | UK | 230/152mm | 10kN | M22 | Steel | BS Large Steel Head | Each | 1.9kg | 6/240 | D374-2110 |





Longer 205mm Stud now on all NZI 33kV Vertical Posts



1/Box



33/915W32



33/915W40



33/955W32 Ultra Premium

33KV PORCELAIN LINE POST INSULATORS (TIE TOP)

| Part Number | Description | Brand | Origin | Creepage Top | Groove | kN | Stud | Glaze | Unit | Weight | Box/ Drawing | Pallet |
|---|---------------------------|-------|--------|--------------|---------|------|------|-----------|------|--------|--------------|----------------|
| 33kV Tie Top Line Posts | | | | | | | | | | | | |
| 464570 | NZI 33kV 915W32 Line Post | NZI | NZ | 915mm | Tie Top | 32mm | 13.5 | 205mm M20 | Grey | Each | 15.4kg | 1/40 D632-0570 |
| 464562 | NZI 33kV 915W40 Line Post | NZI | NZ | 915mm | Tie Top | 40mm | 13.5 | 205mm M20 | Grey | Each | 15.4kg | 1/40 D632-0571 |
| 33kV Ultra Premium Tie Top Line Post | | | | | | | | | | | | |
| 464376 | NZI 33kV 955W32 Line Post | NZI | NZ | 955mm | Tie Top | 32mm | 13 | 205mm M20 | Grey | Each | 17.4kg | 1/40 D632-0562 |

NZI 33kV PIN-TYPE Clamp Top



33KV PORCELAIN PIN-TYPE INSULATORS (CLAMP TOP)

| Part Number | Description | Brand | Origin | Creepage Top | Clamp | Glaze | Thread | Unit | Weight | Box/Pallet | Drawing | |
|--|--------------------------|-------|--------|-----------------|--------------|----------|--------------|---------------------|--------|------------|------------|-----------|
| 33kV Pin-Type Clamp Top | | | | | | | | | | | | |
| 112550 | NZI 3372 | NZI | NZ | 510mm | Cap & Pintle | Separate | Grey | BS Large Steel Head | Each | 8.2kg | 2/32 | D347-0504 |
| 44kV Pin-Type Clamp Top | | | | | | | | | | | | |
| 111414 | NZI 4492 | NZI | NZ | 635mm | Cap & Pintle | Separate | Grey | BS Large Steel Head | Each | 14.1kg | 1/32 | D341-0506 |
| Part Number | Description | Brand | Origin | Conductor Range | Length | Width | Construction | Unit | Weight | Box Qty | Drawing | |
| Clamp for 3372 & 4492 (sold separately) | | | | | | | | | | | | |
| 465283 | AX 10-38mm Special Clamp | AX | NZ | 10-38mm | 127mm | 98mm | Aluminium | Each | 450g | 12 | D330-0503 | |
| Part Number | Description | Brand | Origin | Length | Strength | Diameter | Head | Thread | Unit | Weight | Box/Pallet | Drawing |
| Spindle for both Insulators | | | | | | | | | | | | |
| 540463 | AX R31 Steel Spindle | AX | China | 305/178mm | 10kN | M22 | Steel | BS Large Steel Head | Each | 2.9kg | 6/288 | D374-2023 |
| Shorter Spindle option for 3372 only | | | | | | | | | | | | |
| 540706 | AX R29 Steel Spindle | AX | UK | 230/152mm | 10kN | M22 | Steel | BS Large Steel Head | Each | 1.9kg | 6/240 | D374-2110 |

NZI 33kV LINE POSTS Clamp Top



33KV PORCELAIN LINE POST INSULATORS (CLAMP TOP)

| Part Number | Description | Brand | Origin | Creepage kN | Top | Clamp | Glaze Stud | Unit Weight | Box/ Drawing | Pallet |
|-------------|-------------|-------|--------|-------------|-----|-------|------------|-------------|--------------|--------|
|-------------|-------------|-------|--------|-------------|-----|-------|------------|-------------|--------------|--------|

33kV Vertical Clamp Line Post

| | | | | | | | | | | |
|--------|--------------------------|-----|----|-------|----|--------------|-------------------------|-------------|------|-----------|
| 464597 | NZI 33kV 940VC Line Post | NZI | NZ | 940mm | 10 | Cap & Pintle | Separate Grey 205mm M20 | Each 15.5kg | 1/30 | D724-0524 |
|--------|--------------------------|-----|----|-------|----|--------------|-------------------------|-------------|------|-----------|

| Part Number | Description | Brand | Origin | Creepage kN | Top | Clamp | Glaze Stud | Unit Weight | Box/ Drawing | Pallet |
|-------------|-------------|-------|--------|-------------|-----|-------|------------|-------------|--------------|--------|
|-------------|-------------|-------|--------|-------------|-----|-------|------------|-------------|--------------|--------|

33kV Horizontal Clamp Line Post

| | | | | | | | | | | |
|--------|--------------------------|-----|----|-------|------|--------------|------------------------|-------------|------|-----------|
| 465208 | NZI 33kV 995HC Line Post | NZI | NZ | 995mm | 12.5 | Cap & Pintle | Separate Grey Separate | Each 21.0kg | 1/32 | D725-0514 |
|--------|--------------------------|-----|----|-------|------|--------------|------------------------|-------------|------|-----------|

| Part Number | Description | Brand | Origin | Conductor Range | Length | Width | Construction | Unit Weight | Box Qty | Drawing |
|-------------|-------------|-------|--------|-----------------|--------|-------|--------------|-------------|---------|---------|
|-------------|-------------|-------|--------|-----------------|--------|-------|--------------|-------------|---------|---------|

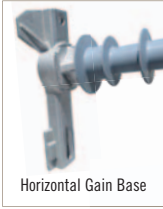
Clamp options for 33kV Line Posts (sold separately)

| | | | | | | | | | | |
|--------|----------------------------|-----|-------|---------|-------|------|-----------|-----------|----|-------------|
| 461792 | AX 10-38mm Trunnion Clamp | AX | NZ | 10-38mm | 127mm | 98mm | Aluminium | Each 450g | 12 | D330-0501 |
| 553727 | DTR 13-27mm Trunnion Clamp | DTR | Korea | 13-27mm | 135mm | 98mm | Aluminium | Each 650g | 6 | DTR-ATC-106 |

| Part Number | Description | Brand | Origin | Length | Diameter | Fixings | Unit Weight | Box Qty | Drawing |
|-------------|-------------|-------|--------|--------|----------|---------|-------------|---------|---------|
|-------------|-------------|-------|--------|--------|----------|---------|-------------|---------|---------|

Stud options for 33/995HC (sold separately)

| | | | | | | | | | |
|--------|-------------------------|----|----|-------|-----|-------------|-----------|----|-----------|
| 465291 | AX 45mm Line Post Stud | AX | NZ | 45mm | M20 | SW/FN | Each 400g | 24 | D330-2013 |
| 465305 | AX 160mm Line Post Stud | AX | NZ | 160mm | M20 | FW/SW/FN/HN | Each 710g | 18 | D330-2022 |
| 465313 | AX 205mm Line Post Stud | AX | NZ | 205mm | M20 | FW/SW/FN/HN | Each 800g | 12 | D330-2059 |

DTR 35kV LINE POSTS (Tie Top & Clamp Top)

Horizontal Gain Base



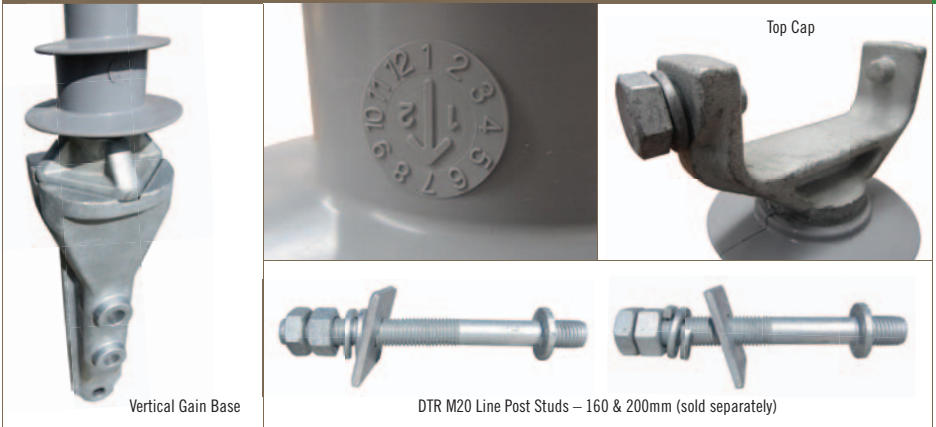
35kV Horizontal Clamp Top Line Post – clamp supplied separately

35KV POLYMER LINE POST INSULATORS (TIE TOP & CLAMP TOP)

| Part Number | Description | Brand | Origin | Creepage | kN | Top | Colour | Clamp & Stud | Unit | Weight | Box/ Pallet | Drawing |
|--|---|-------|--------|----------|------|-----------|--------|--------------|------|--------|-------------|---------------|
| 35kV Vertical Line Posts | | | | | | | | | | | | |
| 553255 | DTR 35kV Vertical Tie Top Line Post | DTR | Korea | 602mm | 12.5 | Tie Top | Grey | Separate | Each | 4.3kg | 6/120 | DTR-LPFN-35SK |
| 553131 | DTR 35kV Vertical Clamp Top Line Post | DTR | Korea | 602mm | 12.5 | Clamp Top | Grey | Separate | Each | 4.9kg | 6/120 | DTR-LPV-35SK |
| 35kV Horizontal Clamp Line Post | | | | | | | | | | | | |
| 553158 | DTR 35kV Horizontal Clamp Top Line Post | DTR | Korea | 602mm | 12.5 | Clamp Top | Grey | Separate | Each | 4.9kg | 6/120 | DTR-LPH-35SK |

| Part Number | Description | Brand | Origin | Conductor Range | Length | Width | Construction | Unit | Weight | Box Qty | Drawing |
|--|---------------------------|-------|--------|-----------------|--------|-------|--------------|------|--------|---------|-------------|
| Clamp options for DTR 35kV Line Posts (sold separately) | | | | | | | | | | | |
| 553727 | DTR 13-27mm Trunion Clamp | DTR | Korea | 13-27mm | 135mm | 98mm | Aluminium | Each | 650g | 6 | DTR-ATC-106 |
| 461792 | AX 10-38mm Trunion Clamp | AX | NZ | 10-38mm | 127mm | 98mm | Aluminium | Each | 450g | 12 | D330-0501 |

| Part Number | Description | Brand | Origin | Length | Diameter | Fixings | Unit | Weight | Box/ Pallet | Drawing |
|---|--------------------------|-------|--------|--------|----------|----------|------|--------|-------------|-----------|
| Stud options for DTR 35kV Line Posts (sold separately) | | | | | | | | | | |
| 553662 | DTR 48mm Line Post Stud | DTR | Korea | 48mm | M20 | FW/SW/FN | Each | 300g | 96 | STD48M20 |
| 553581 | DTR 160mm Line Post Stud | DTR | Korea | 160mm | M20 | FW/SW/FN | Each | 700g | 72 | STD160M20 |
| 553697 | DTR 200mm Line Post Stud | DTR | Korea | 200mm | M20 | FW/SW/FN | Each | 850g | 48 | STD200M20 |
| Gain Bases for DTR 35kV Line Posts (sold separately) | | | | | | | | | | |
| 553174 | DTR Vertical Gain Base | DTR | Korea | 300mm | | | Each | 4.5kg | 6/60 | DTR-GBV |
| 553182 | DTR Horizontal Gain Base | DTR | Korea | 300mm | | | Each | 3.3kg | 6/60 | DTR-GBH |



69kV POLYMER LINE POST INSULATORS (TIE TOP & CLAMP TOP)

| Part Number | Description | Brand | Origin | Creepage kN | Top | Colour | Clamp & Stud | Unit | Weight | Box/ Pallet | Drawing | |
|--|---|-------|--------|-------------|------|-----------|--------------|----------|--------|-------------|---------|---------------|
| 69kV Vertical Line Posts | | | | | | | | | | | | |
| 553166 | DTR 69kV Vertical Tie Top Line Post | DTR | Korea | 1387mm | 11.0 | Tie Top | Grey | Separate | Each | 14.4kg | 1/60 | DTR-LPFN-69SK |
| 553212 | DTR 69kV Vertical Clamp Top Line Post | DTR | Korea | 1387mm | 11.0 | Clamp Top | Grey | Separate | Each | 14.4kg | 1/60 | DTR-LPV-69SK |
| 69kV Horizontal Clamp Line Post | | | | | | | | | | | | |
| 553220 | DTR 69kV Horizontal Clamp Top Line Post | DTR | Korea | 1387mm | 11.0 | Clamp Top | Grey | Separate | Each | 14.4kg | 1/60 | DTR-LPH-69SK |

| Part Number | Description | Brand | Origin | Conductor Range | Length | Width | Construction | Unit | Weight | Box Qty | Drawing |
|--|----------------------------|-------|--------|-----------------|--------|-------|--------------|------|--------|---------|-------------|
| Clamp options for DTR 69kV Line Posts (sold separately) | | | | | | | | | | | |
| 553727 | DTR 13-27mm Trunnion Clamp | DTR | Korea | 13-27mm | 135mm | 98mm | Aluminium | Each | 650g | 6 | DTR-ATC-106 |
| 461792 | AX 10-38mm Trunnion Clamp | AX | NZ | 10-38mm | 127mm | 98mm | Aluminium | Each | 450g | 12 | D330-0501 |

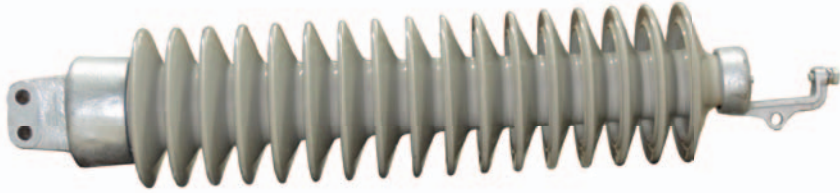
| Part Number | Description | Brand | Origin | Length | Diameter | Fixings | Unit | Weight | Box/ Pallet | Drawing |
|---|--------------------------|-------|--------|--------|----------|----------|------|--------|-------------|-----------|
| Stud options for DTR 69kV Line Posts (sold separately) | | | | | | | | | | |
| 553662 | DTR 48mm Line Post Stud | DTR | Korea | 48mm | M20 | FW/SW/FN | Each | 300g | 96 | STD48M20 |
| 553581 | DTR 160mm Line Post Stud | DTR | Korea | 160mm | M20 | FW/SW/FN | Each | 700g | 72 | STD160M20 |
| 553697 | DTR 200mm Line Post Stud | DTR | Korea | 200mm | M20 | FW/SW/FN | Each | 850g | 48 | STD200M20 |
| Gain Bases for DTR 69kV Line Posts (sold separately) | | | | | | | | | | |
| 553174 | DTR Vertical Gain Base | DTR | Korea | 300mm | | | Each | 4.5kg | 6/60 | DTR-GBV |
| 553182 | DTR Horizontal Gain Base | DTR | Korea | 300mm | | | Each | 3.3kg | 6/60 | DTR-GBH |

NZI 69kV & 110kV LINE POSTS Clamp Top



Base Cap for both Vertical and Horizontal

Vertical Top Cap



110kV 2850HC Horizontal Line Post (clamp supplied separately)

110KV PORCELAIN LINE POST INSULATORS (CLAMP TOP)

| Part Number | Description | Brand | Origin | Creepage | Strength | Top | Glaze | Fixing & Clamp | Unit | Weight | Box Qty | Drawing |
|--|----------------------------|-------|--------|----------------------|----------|--------------|--------------|----------------|--------|---------|-----------|-----------|
| 66kV Vertical Clamp Top Post | | | | | | | | | | | | |
| 460419 | NZI 66kV 1830VC Line Post | NZI | NZ | 1830mm | 10kN | Cap & Pintle | Grey | Separate | Each | 37kg | 1 | D724-0518 |
| 66kV Horizontal Clamp Top Post | | | | | | | | | | | | |
| 460451 | NZI 66kV 1830HC Line Post | NZI | NZ | 1830mm | 10kN | Cap & Pintle | Grey | Separate | Each | 37kg | 1 | D725-0523 |
| 110kV Vertical Clamp Top Post | | | | | | | | | | | | |
| 460222 | NZI 110kV 2850VC Line Post | NZI | NZ | 2850mm | 10kN | Cap & Pintle | Grey | Separate | Each | 60kg | 1 | D724-0519 |
| 110kV Horizontal Clamp Top Post | | | | | | | | | | | | |
| 460265 | NZI 110kV 2850HC Line Post | NZI | NZ | 2850mm | 10kN | Cap & Pintle | Grey | Separate | Each | 60kg | 1 | D725-0524 |
| Part Number | Description | Brand | Origin | Conductor Range | Length | Width | Construction | Unit | Weight | Box Qty | Drawing | |
| Clamp for 66kV & 110kV Line Posts (sold separately) | | | | | | | | | | | | |
| 461792 | AX 10-38mm Trunnion Clamp | AX | NZ | 10-38mm ² | 127mm | 98mm | Aluminium | Each | 450g | 12 | D330-0501 | |



T-Insert 12kV



12kV



22kV



36kV



T-Insert



External Cap

12-36KV PORCELAIN STANDOFF INSULATORS

| Part Number | Description | Brand | Origin | Creepage | Length | kN | End Fittings | Glaze | Unit | Weight | Box Qty | Drawing |
|-------------------------------|-------------------|-------|--------|----------|--------|-----|--------------|-------|------|--------|---------|-----------|
| T-Insert Standoff | | | | | | | | | | | | |
| 598263 | NZI 12kV T-Insert | NZI | NZ | 480mm | 235mm | 3.5 | T Insert | Grey | Each | 6.0kg | 6 | D412-0504 |
| External Cap Standoffs | | | | | | | | | | | | |
| 598291 | NZI 12kV Standoff | NZI | NZ | 445mm | 235mm | 4 | 76CRS Caps | Grey | Each | 5.9kg | 4 | D412-0529 |
| 598305 | NZI 22kV Standoff | NZI | NZ | 590mm | 300mm | 3 | 76CRS Caps | Grey | Each | 6.8kg | 3 | D412-0531 |
| 598313 | NZI 36kV Standoff | NZI | NZ | 880mm | 406mm | 2 | 76CRS Caps | Grey | Each | 9.0kg | 3 | D412-0527 |



TR208 25kV Station Post

15-220KV POLYMER STATION POST INSULATORS

| Part Number | Description | Brand | Origin | Rated | Creepage | Length | kN | Sheds | Colour | Weight | Box Qty | Drawing |
|---------------------------|---------------------------------|-------|--------|-------|----------|--------|------|-------|--------|--------|---------|-------------|
| 15kV Station Post | | | | | | | | | | | | |
| 553263 | DTR TR205 15kV Station Post | DTR | Korea | 15kV | 529mm | 254mm | 12.5 | 5 | Grey | 3.2kg | 6 | DTR-TR205SK |
| 25kV Station Post | | | | | | | | | | | | |
| 553271 | DTR TR208 25kV Station Post | DTR | Korea | 25kV | 824mm | 357mm | 12.5 | 7 | Grey | 4.1kg | 6 | DTR-TR208SK |
| 35kV Station Post | | | | | | | | | | | | |
| 553298 | DTR TR210 35kV Station Post | DTR | Korea | 35kV | 1117mm | 457mm | 12.5 | 9 | Grey | 4.5kg | 6 | DTR-TR210SK |
| 46kV Station Post | | | | | | | | | | | | |
| 553301 | DTR TR214 46kV Station Post | DTR | Korea | 46kV | 1436mm | 559mm | 12.5 | 11 | Grey | 5.5kg | 6 | DTR-TR214SK |
| 69kV Station Post | | | | | | | | | | | | |
| 553328 | DTR TR216 69kV Station Post | DTR | Korea | 69kV | 1884mm | 762mm | 12 | 15 | Grey | 7.7kg | 6 | DTR-TR216SK |
| 150kV Station Post | | | | | | | | | | | | |
| 553352 | DTR TR219 150kV Station Post | DTR | Korea | 150kV | 4128mm | 1704mm | 8 | 24 | Grey | 20.4kg | 1 | DTR-TR219SK |
| 220kV Station Post | | | | | | | | | | | | |
| 553360 | DTR TR312 220kV Station Post | DTR | Korea | 220kV | 5854mm | 2336mm | 5.5 | 34 | Grey | 30.2kg | 1 | DTR-TR312SK |



1131



4494



4497



4494 Inverted



72.5kV (460990)

11-72.5KV PORCELAIN STATION POST INSULATORS

| Part Number | Description | Brand | Origin | Creepage | Length | KN | Caps | Construction | Glaze | Weight | Box/ Drawing | Pallet |
|-----------------------------|--|-------|--------|----------|--------|----|--------|--------------|-------|--------|--------------|-----------|
| 11kV Station Post | | | | | | | | | | | | |
| 104744 | NZI 1131 11kV Station Post | NZI | NZ | 265mm | 228mm | 6 | 76PCD | 1 Piece | Grey | 4.4kg | 6/120 | D712-0501 |
| 36kV Station Posts | | | | | | | | | | | | |
| 460001 | NZI 4494 36kV Station Post | NZI | NZ | 860mm | 381mm | 12 | 76PCD | 1 Piece | Grey | 20kg | 1/32 | D687-0547 |
| 460028 | NZI 4494 Inverted 36kV Station Post | NZI | NZ | 860mm | 381mm | 12 | 76PCD | 1 Piece | Grey | 20kg | 1/32 | D687-0593 |
| 462489 | NZI 36kV Station Post | NZI | NZ | 950mm | 475mm | 5 | 76PCD | 1 Piece | Grey | 16kg | 1/40 | D687-0531 |
| 44kV Station Post | | | | | | | | | | | | |
| 113514 | NZI 4497 HD 44kV Station Post | NZI | NZ | 813mm | 381mm | 11 | 76PCD | 1 Piece | Grey | 16kg | 1/27 | D400-0502 |
| 72.5kV Station Posts | | | | | | | | | | | | |
| 460990 | NZI 72.5kV Station Post | NZI | NZ | 1600mm | 762mm | 8 | 76PCD | 1 Piece | Grey | 39kg | 1/20 | D687-0588 |
| 460737 | NZI 72.5kV Station Post (Pedestal Mount) | NZI | NZ | 1880mm | 770mm | 7 | 127PCD | 1 Piece | Grey | 40kg | 1/20 | D687-0590 |



GALVANISED STEEL SPINDLES FOR PIN-TYPE INSULATORS

| Part Number | Description | Brand | Origin | Length | Diameter | kN | Head | Thread | Unit | Weight | Box/ Pallet | Drawing |
|---------------------------------------|---------------------------|-------|--------|-----------|----------|-----|-------|---------------------|------|--------|----------------|-----------|
| Spindle for 510, 511 & 821 | | | | | | | | | | | | |
| 540358 | AX 5/8 Cordeau Steel Head | AX | China | 118/147mm | M16 | 3.3 | Steel | 5/8" Cordeau | Each | 485g | 30/1200 | D374-2009 |
| Spindles for 1130W | | | | | | | | | | | | |
| 536164 | AX Nema 1" Nylon Head | AX | China | 152/146mm | M20 | 6 | Nylon | 1 Inch SLHT | Each | 1.0kg | 12/480 | D374-2134 |
| 536326 | AX Nema 1" Lead Head | AX | China | 152/146mm | M20 | 6 | Lead | 1 Inch SLHT | Each | 1.1kg | 12/480 | D374-2118 |
| 541532 | AX Extended Lead Head | AX | China | 185/135mm | M20 | 6 | Lead | 1 Inch SLHT | Each | 1.3kg | 12/480 | D374-2120 |
| Spindle for 1132T | | | | | | | | | | | | |
| 540528 | AX R23 Steel Head | AX | UK | 170/130mm | M18 | 10 | Steel | BS Small Steel Head | Each | 1.1kg | 12/240 | D374-2027 |
| Spindle for 1540 | | | | | | | | | | | | |
| 540455 | AX 140B1 Lead Head | AX | China | 171/134mm | M20 | 10 | Lead | 1 & 3/8" | Each | 1.6kg | 12/480 | D374-2008 |



M20 PattC

M24 PattC

R29

R31

Lead Head

AX STUD FITTINGS =
Flat Washer + Helical
Spring Washer + Full Nut + Half Nut

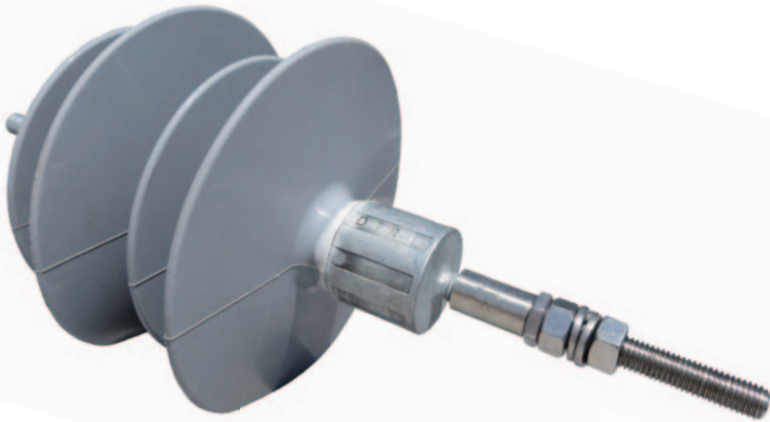
AX Spindles supplied in Wooden Boxes

GALVANISED STEEL SPINDLES FOR PIN-TYPE INSULATORS

| Part Number | Description | Brand | Origin | Length | Diameter | kN | Head | Thread | Unit | Weight | Box/ Drawing | Pallet |
|--|----------------------------|-------|--------|-----------|----------|----|-------|---------------------|------|--------|--------------|-----------|
| Spindles for ALP22/450 | | | | | | | | | | | | |
| 538213 | AX M20 Pattern C Lead Head | AX | China | 200/165mm | M20 | 10 | Lead | Pattern C | Each | 2.2kg | 6/240 | D374-2084 |
| 538205 | AX M24 Pattern C Lead Head | AX | China | 200/165mm | M24 | 11 | Lead | Pattern C | Each | 2.4kg | 6/240 | D374-2085 |
| Spindle for 3370, 33/920, 4490, 3372 & 4492 | | | | | | | | | | | | |
| 540463 | AX R31 Steel Head | AX | China | 305/178mm | M22 | 10 | Steel | BS Large Steel Head | Each | 2.9kg | 6/216 | D374-2023 |
| Shorter Spindle option for 3370 & 3372 only | | | | | | | | | | | | |
| 540706 | AX R29 Steel Head | AX | UK | 230/152mm | M22 | 10 | Steel | BS Large Steel Head | Each | 1.9kg | 6/240 | D374-2110 |



Avon Crucifix Bracket



DTR Crucifix Standoff

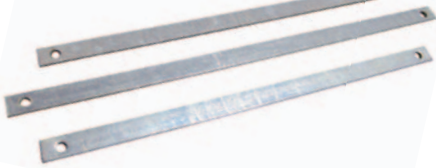
GALVANISED STEEL CRUCIFIX BRACKET & POLYMER STANDOFF

| Part Number | Description | Brand | Origin | Length | Width | Thick | Holes | Unit | Weight | Pack Qty | Drawing |
|---|---------------------------------|-------|--------|--------|-----------------|-----------|--------|------|--------|------------|---------------|
| Crucifix Bracket (HDG to 4680:2006) | | | | | | | | | | | |
| 537055 | Avon 11kV Crucifix Bracket only | Avon | NZ | 920mm | 340mm | 6mm | 14mm | Each | 4.8kg | 5 | AA18206 |
| Part Number | Description | Brand | Origin | Rated | Creepage Length | Stud | Colour | Unit | Weight | Box/Pallet | Drawing |
| Polymer Standoff for 11kV Crucifix (IEC 61109) | | | | | | | | | | | |
| 553069 | DTR 15kV Crucifix Standoff | DTR | Korea | 15kV | 550mm | 328mm M12 | Grey | Each | 1.8kg | 6/300 | ISA3-0550-GSS |



Screw Anchors

Crossarm Braces



Eye Bolts

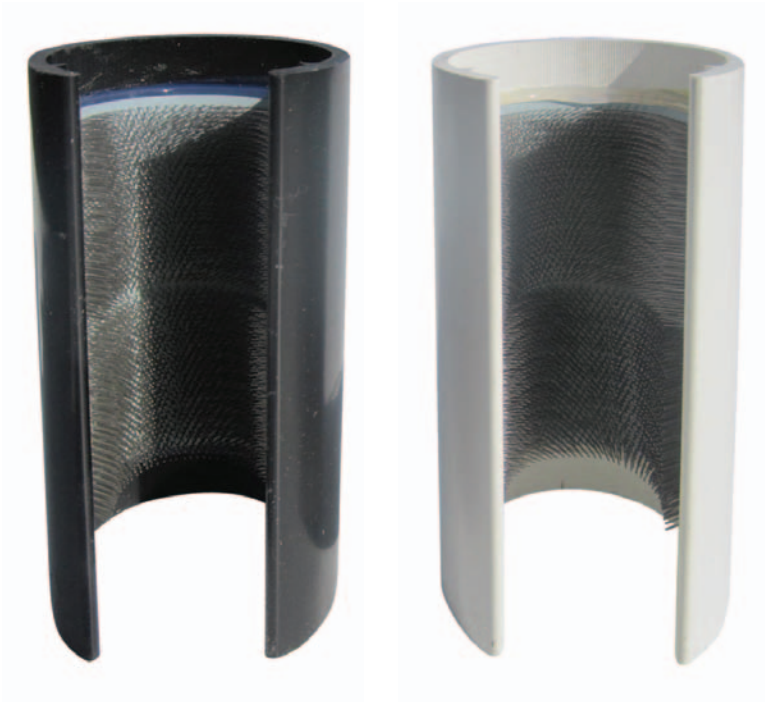


GALVANISED STEEL LINE HARDWARE

| Part Number | Description | Brand | Origin | Length | Shaft | Helix Dia | Eye ID | Unit | Weight | Pack Qty | Drawing |
|----------------------------|---------------------------------------|-------|--------|--------|-------|-----------|--------|------|--------|----------|---------|
| 1.8mm Screw Anchors | | | | | | | | | | | |
| 536512 | Avon 1.8/20/175 Screw Anchor | Avon | NZ | 1.8m | M20 | 175mm | 60mm | Each | 6.0kg | 1 | AA05003 |
| 536520 | Avon 1.8/24-2/175 Double Helix Anchor | Avon | NZ | 1.8m | M20 | 175mm | 60mm | Each | 9.0kg | 1 | AA05007 |
| 536539 | Avon 1.8/24/210 Screw Anchor | Avon | NZ | 1.8m | M24 | 210mm | 60mm | Each | 8.9kg | 1 | AA05004 |
| 536547 | Avon 1.8/32/250 Screw Anchor | Avon | NZ | 1.8m | M32 | 250mm | 60mm | Each | 17.0kg | 1 | AA05006 |

| Part Number | Description | Brand | Origin | Length | Width | Thick | Eye ID | Unit | Weight | Bag Qty | Drawing |
|----------------------|----------------------------------|-------|--------|--------|-------|--------|--------|------|--------|---------|---------|
| M16 Eye Bolts | | | | | | | | | | | |
| 537144 | Avon 20x200mm Eye Bolt + M16 Nut | Avon | NZ | 200mm | 50mm | 14.7mm | 20mm | Each | 490g | 10 | AA02002 |
| 537152 | Avon 32x200mm Eye Bolt + M16 Nut | Avon | NZ | 200mm | 62mm | 14.7mm | 32mm | Each | 500g | 10 | AA02011 |
| 537160 | Avon 20x250mm Eye Bolt + M16 Nut | Avon | NZ | 250mm | 50mm | 14.7mm | 20mm | Each | 620g | 10 | AA02004 |

| Part Number | Description | Brand | Origin | Length | Width | Thick | Holes | Unit | Weight | Bag Qty | Drawing |
|----------------------------|------------------------------|-------|--------|--------|-------|-------|-------|------|--------|---------|---------|
| 5mm Crossarm Braces | | | | | | | | | | | |
| 536555 | Avon 610x30mm Crossarm Brace | Avon | NZ | 610mm | 30mm | 5mm | 14mm | Each | 720g | 20 | AA13009 |
| 537179 | Avon 660x30mm Crossarm Brace | Avon | NZ | 660mm | 30mm | 5mm | 14mm | Each | 780g | 20 | AA13010 |
| 536563 | Avon 700x30mm Crossarm Brace | Avon | NZ | 700mm | 30mm | 5mm | 14mm | Each | 830g | 20 | AA13011 |
| 537187 | Avon 763x30mm Crossarm Brace | Avon | NZ | 763mm | 30mm | 5mm | 14mm | Each | 900g | 20 | AA13013 |
| 536571 | Avon 800x30mm Crossarm Brace | Avon | NZ | 800mm | 30mm | 5mm | 14mm | Each | 940g | 20 | AA13015 |
| 536598 | Avon 900x30mm Crossarm Brace | Avon | NZ | 900mm | 30mm | 5mm | 14mm | Each | 1.1kg | 20 | AA13017 |



Black (for copper)

White (for aluminium)

CABLE OXIDE REMOVAL BRUSHES

| Part Number | Description | Brand | Origin | Colour | Length | Diameter | Unit | Weight | Box Qty |
|---|---------------------------------------|--------|-----------|--------|--------|----------|------|--------|---------|
| For Cleaning Copper Conductor prior to crimping | | | | | | | | | |
| 523054 | Fulton ORB-1 Oxide Film Removal Brush | Fulton | Australia | Black | 130mm | 50mm | Each | 140g | 15 |
| For Cleaning Aluminium Conductor prior to crimping | | | | | | | | | |
| 523062 | Fulton ORB-2 Oxide Film Removal Brush | Fulton | Australia | White | 130mm | 50mm | Each | 140g | 15 |



AAR 0620



AAR 0660



AAR 1050



AAR 1400

PAYER ALUMINIUM ARMOUR RODS (RH LAY)

| Part Number | Description | Brand | Origin | Conductor | Colour | Diameter Range | Wires | Unit | Box Qty |
|------------------------------|----------------------|-------|--------|---------------------|--------|-----------------|-----------|------|---------|
| Aluminium Armour Rods | | | | | | | | | |
| 560006 | AAR 0620 Armour Rods | Payer | Canada | Squirrel/Namu/Boron | Orange | 6.2 - 6.59mm | 7x3.71mm | Each | 40 |
| 560014 | AAR 0660 Armour Rods | Payer | Canada | Flounder | Brown | 6.6 - 6.94mm | 7x3.71mm | Each | 40 |
| 560286 | AAR 0695 Armour Rods | Payer | Canada | Gopher/Poko | Yellow | 6.95 - 7.34mm | 8x3.71mm | Each | 40 |
| 560294 | AAR 0880 Armour Rods | Payer | Canada | Ferret/Kutu | Red | 8.8 - 9.29mm | 9x4.24mm | Each | 25 |
| 560022 | AAR 1050 Armour Rods | Payer | Canada | Mink/Rango | Black | 10.5 - 11.09mm | 10x4.24mm | Each | 20 |
| 560308 | AAR 1245 Armour Rods | Payer | Canada | Wasp | Green | 12.45 - 13.24mm | 11x4.24mm | Each | 20 |
| 560030 | AAR 1400 Armour Rods | Payer | Canada | Dog/Weke/Iodine | Blue | 14.0 - 14.89mm | 11x4.24mm | Each | 15 |
| 560316 | AAR 1790 Armour Rods | Payer | Canada | Wolf | Red | 17.9 - 18.8mm | 12x5.18mm | Each | 10 |



Genuine Payer of Canada

PAYER ALUMINIUM LINE GUARDS & LINE SPLICES (RH LAY)

| Part Number | Description | Brand | Origin | Conductor | Colour | Diameter Range | 3.07mm Wires | Unit | Box Qty |
|-------------------------------|----------------------|-------|--------|---------------|--------|-----------------|--------------|------|---------|
| Aluminium Line Guards | | | | | | | | | |
| 560626 | ALG 0620 Line Guard | Payer | Canada | Squirrel/Namu | Orange | 6.2 - 6.59mm | 8 | Each | 50 |
| 560634 | ALG 0695 Line Guard | Payer | Canada | Gopher/Poko | Yellow | 6.95 - 7.34mm | 9 | Each | 50 |
| 560642 | ALG 0735 Line Guard | Payer | Canada | Chlorine | Blue | 7.35 - 7.84mm | 9 | Each | 50 |
| 560650 | ALG 0880 Line Guard | Payer | Canada | Ferret/Kutu | Red | 8.8 - 9.29mm | 10 | Each | 40 |
| 560669 | ALG 1050 Line Guard | Payer | Canada | Mink/Rango | Black | 10.5 - 11.09mm | 13 | Each | 30 |
| 560677 | ALG 1180 Line Guard | Payer | Canada | Raccoon | White | 11.8 - 12.44mm | 13 | Each | 30 |
| 560685 | ALG 1245 Line Guard | Payer | Canada | Wasp | Green | 12.45 - 13.24mm | 13 | Each | 30 |
| 560693 | ALG 1400 Line Guard | Payer | Canada | Dog/Weke | Blue | 14.0 - 14.89 | 15 | Each | 25 |
| 560707 | ALG 1880 Line Guard | Payer | Canada | Jaguar | White | 18.8 - 20.14mm | 17 | Each | 15 |
| 560715 | ALG 2015 Line Guard | Payer | Canada | Cockroach | Red | 20.15 - 21.34mm | 18 | Each | 15 |
| Aluminium Line Splices | | | | | | | | | |
| 560499 | ALS 0625 Line Splice | Payer | Canada | Squirrel/Namu | Orange | 6.25 - 6.54mm | 2x4 | Each | 50 |
| 560502 | ALS 0655 Line Splice | Payer | Canada | Flounder | Brown | 6.55 - 6.89mm | 2x4 | Each | 50 |
| 560510 | ALS 0690 Line Splice | Payer | Canada | Gopher/Poko | Yellow | 6.9 - 7.14mm | 3x3 | Each | 40 |
| 560529 | ALS 1015 Line Splice | Payer | Canada | Hake | Black | 10.15 - 10.49mm | 2x4+1x5 | Each | 40 |



ADE 0625



ADE 1080



ADE 1385

PAYER ALUMINIUM DEADENDS (RH LAY)

| Part Number | Description | Brand | Origin | Conductor | Colour | Diameter Range | Unit | Box Qty |
|---------------------------|------------------------|-------|--------|-----------------|--------|-----------------|------|---------|
| Aluminium Deadends | | | | | | | | |
| 560057 | Payer ADE 0625 Deadend | Payer | Canada | Squirrel/Namu | Orange | 6.25 - 6.54mm | Each | 40 |
| 560049 | Payer ADE 0690 Deadend | Payer | Canada | Gopher/Poko | Yellow | 6.9 - 7.14mm | Each | 40 |
| 560324 | Payer ADE 0895 Deadend | Payer | Canada | Ferret/Kutu | Red | 8.95 - 9.34mm | Each | 50 |
| 560332 | Payer ADE 0970 Deadend | Payer | Canada | Rabbit | Brown | 9.7 - 10.14mm | Each | 40 |
| 560073 | Payer ADE 1080 Deadend | Payer | Canada | Mink/Rango | Black | 10.8 - 11.3mm | Each | 30 |
| 560340 | Payer ADE 1130 Deadend | Payer | Canada | Grasshopper | Blue | 11.3 - 11.74mm | Each | 30 |
| 560359 | Payer ADE 1225 Deadend | Payer | Canada | Raccoon | White | 12.25 - 12.79mm | Each | 25 |
| 560367 | Payer ADE 1280 Deadend | Payer | Canada | Wasp/Beetle | Green | 12.8 - 13.5mm | Each | 25 |
| 560065 | Payer ADE 1385 Deadend | Payer | Canada | Dog/Weke/Iodine | Blue | 13.85 - 14.44mm | Each | 20 |
| 560375 | Payer ADE 1570 Deadend | Payer | Canada | Cricket | Orange | 15.7 - 16.39mm | Each | 15 |
| 560383 | Payer ADE 1640 Deadend | Payer | Canada | Dingo/Weta | Brown | 16.4 - 17.04mm | Each | 10 |
| 560103 | Payer ADE 1855 Deadend | Payer | Canada | Jaguar/Mata | White | 18.55 - 19.29mm | Each | 10 |
| 560391 | Payer ADE 2100 Deadend | Payer | Canada | Cockroach | Red | 21.0 - 21.41mm | Each | 10 |
| 560405 | Payer ADE 2255 Deadend | Payer | Canada | Butterfly | Green | 22.55 - 24.33mm | Each | 10 |



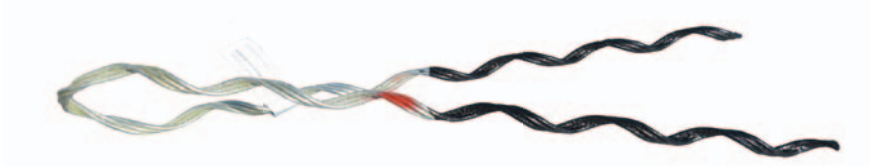
Waterproof Synthetic Labels

PAYER FULL TENSION GALV STEEL DEADENDS (RH LAY)

| Part Number | Description | Brand | Origin | Conductor | Colour | Diameter | Unit | Box Qty |
|---|------------------------|-------|--------|-----------|--------|----------|------|---------|
| Single Piece Galv Steel Deadends | | | | | | | | |
| 560081 | Payer FSE 0582 Deadend | Payer | Canada | Flounder | Grey | 6.71mm | Each | 50 |
| 560618 | Payer FSE 1125 Deadend | Payer | Canada | Mink | Red | 10.98mm | Each | 40 |



LTDNE 0585



LTDNE 0735



LTDNE 0955

PAYER GALV STEEL LIMITED TENSION NEOPRENE DEADENDS (RH LAY)

| Part Number | Description | Brand | Origin | Conductor | Colour | Diameter Range | Unit | Box Qty |
|--------------------------|--------------------|-------|--------|------------------|--------|-----------------|------|---------|
| Neoprene Deadends | | | | | | | | |
| 560197 | LTNDE 0585 Deadend | Payer | Canada | Flounder | Green | 5.85 - 7.34mm | Each | 50 |
| 560111 | LTNDE 0735 Deadend | Payer | Canada | Namu | Red | 7.35 - 9.55mm | Each | 100 |
| 560200 | LTNDE 0955 Deadend | Payer | Canada | Ferret | Blue | 9.55 - 11.35mm | Each | 50 |
| 560138 | LTNDE 1210 Deadend | Payer | Canada | Rango | Red | 12.1 - 14.17mm | Each | 25 |
| 560146 | LTNDE 1485 Deadend | Payer | Canada | Beetle/Wasp/Weke | Black | 14.85 - 16.63mm | Each | 20 |
| 560413 | LTNDE 1880 Deadend | Payer | Canada | Weta | Yellow | 18.8 - 20.19mm | Each | 10 |
| 560421 | LTNDE 2200 Deadend | Payer | Canada | Butterfly | Blue | 22.0 - 23.32mm | Each | 10 |
| 560429 | LTNDE 2500 Deadend | Payer | Canada | Goat/Centipede | Orange | 25.0 - 26.67mm | Each | 10 |



SGG 0595



SGG 1185



SGL 0930

PAYER GALV STEEL GUY GRIPS & GUY LOCKS (RH LAY)

| Part No. | Description | Brand | Origin | Galv Steel | Colour | Diameter Range | Unit | Box Qty |
|------------------|-------------------|-------|--------|-------------------|--------|-----------------|------|---------|
| Guy Grips | | | | | | | | |
| 560219 | SGG 0485 Guy Grip | Payer | Canada | 7/16 | Black | 4.85 - 5.04mm | Each | 100 |
| 560154 | SGG 0595 Guy Grip | Payer | Canada | 7/14 SWG | Yellow | 5.95 - 6.19mm | Each | 50 |
| 560227 | SGG 0765 Guy Grip | Payer | Canada | 7/12 | White | 7.65 - 7.99mm | Each | 50 |
| 560162 | SGG 0895 Guy Grip | Payer | Canada | 7/3.00 | Red | 8.95 - 9.29mm | Each | 25 |
| 560235 | SGG 0930 Guy Grip | Payer | Canada | 7/3.15 & 1/19/1.9 | Red | 9.3 - 9.69mm | Each | 40 |
| 560170 | SGG 0970 Guy Grip | Payer | Canada | 7/10 SWG | Green | 9.7 - 10.04mm | Each | 40 |
| 560251 | SGG 1185 Guy Grip | Payer | Canada | 7/4.00 | Brown | 11.85 - 12.19mm | Each | 25 |
| 560456 | SGG 1305 Guy Grip | Payer | Canada | 19/12 SWG | White | 13.05 - 13.49mm | Each | 15 |
| Guy Locks | | | | | | | | |
| 560464 | SGL 0595 Guy Lock | Payer | Canada | 7/14 SWG | Yellow | 5.95 - 6.19mm | Each | 150 |
| 560278 | SGL 0765 Guy Lock | Payer | Canada | 7/12 & 7.5mm | White | 7.65 - 7.99mm | Each | 50 |
| 560472 | SGL 0895 Guy Lock | Payer | Canada | 7/3.00 | Red | 8.95 - 9.29mm | Each | 35 |
| 560189 | SGL 0930 Guy Lock | Payer | Canada | 7/3.15 | Red | 9.3 - 9.69mm | Each | 30 |
| 560480 | SGL 1185 Guy Lock | Payer | Canada | 7/4.00 | Brown | 11.85 - 12.19mm | Each | 20 |



GY3 Top View



GY3 Guy Strain

GY3 Side View



107 Fence Strainer



GY2 Guy Strain



GY4 Guy Strain

PORCELAIN GUY STRAINS & FENCE STRAINER

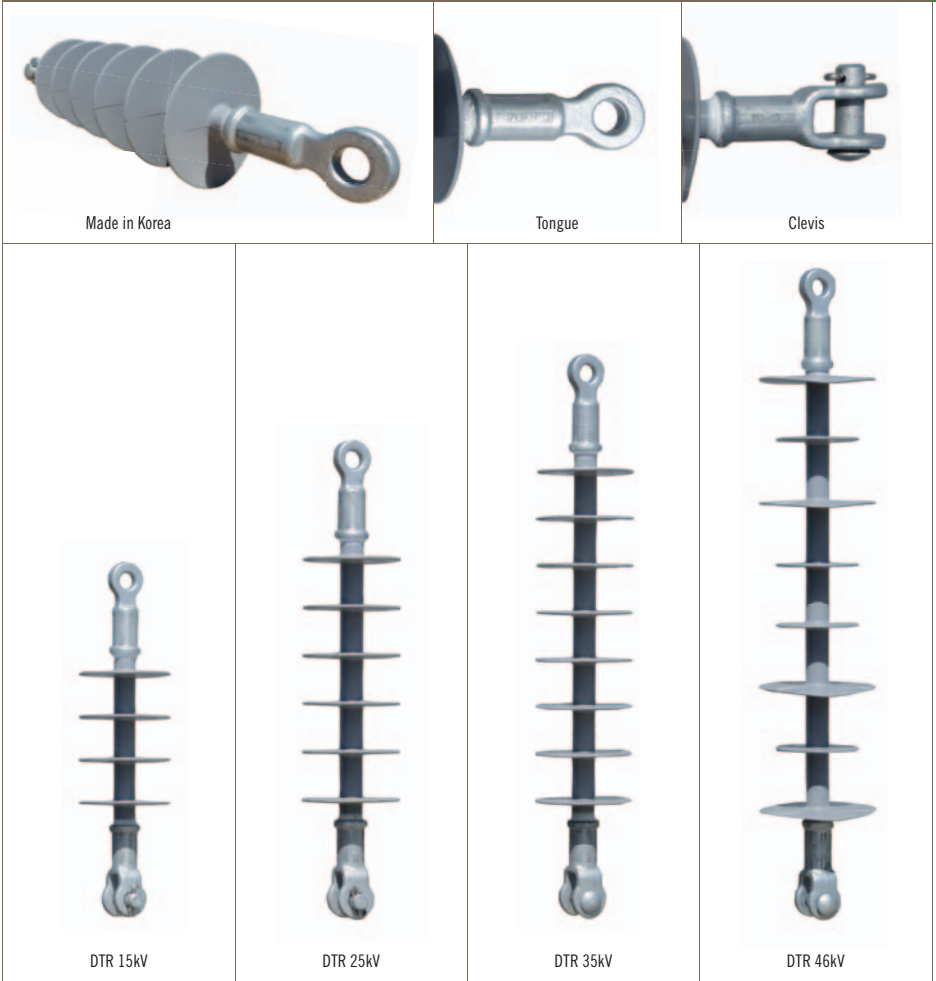
| Part Number | Description | Brand | Origin | Length | Wet Flashover | Failing Load | Glaze | Unit | Weight | Box/Pallet | Drawing |
|-----------------------|-------------------------|-------|--------|--------|---------------|--------------|-------|------|--------|------------|---------|
| Guy Strains | | | | | | | | | | | |
| 108197 | NZI GY2 15kV Guy Strain | NZI | NZ | 146mm | 15kV | 71kN | Grey | Each | 1.2kg | 18/1152 | S2289 |
| 108162 | NZI GY3 20kV Guy Strain | NZI | NZ | 216mm | 20kV | 222kN | Grey | Each | 3.8kg | 4/192 | S2290 |
| 108170 | NZI GY4 30kV Guy Strain | NZI | NZ | 280mm | 30kV | 222kN | Grey | Each | 5.7kg | 4/168 | S2291 |
| Fence Strainer | | | | | | | | | | | |
| 108014 | NZI 107 Fence Strain | NZI | NZ | 57mm | 4kV | 4.5kN | Clear | Each | 135g | 280 | M1515 |

AX CLEVIS Thimbles & 15kV Strain Bundles



CLEVIS THIMBLES & POLYMER STRAIN BUNDLES

| Part Number | Description | Brand | Origin | Strength | Length | Int Width | Loop | Unit | Weight | Box Qty | Drawing |
|--|--|-------|--------|----------|--------|-----------|------|------|--------|---------|-----------|
| Clevis Thimbles | | | | | | | | | | | |
| 536342 | AX Aluminium Clevis Thimble | AX | China | 70kN | 132mm | 30mm | 57mm | Each | 470g | 30 | D374-2140 |
| 536393 | AX Galv Steel Clevis Thimble | AX | China | 70kN | 146mm | 25mm | 57mm | Each | 650g | 30 | D374-2142 |
| HDG Thimble | | | | | | | | | | | |
| 536407 | AX 16mm Galv Thimble | AX | NZ | | 80mm | 16mm | 57mm | Each | 100g | 10 | |
| Preassembled Polymer Strain Bundles | | | | | | | | | | | |
| 553336 | DTR 15kV Polymer Strain + AX Aluminium Clevis + Avon 32/200M16 Eye Bolt | | | | | | | | 2.1kg | 10 | |
| 553344 | DTR 15kV Polymer Strain + AX Galv Steel Clevis + Avon 32/200M16 Eye Bolt | | | | | | | | 2.3kg | 10 | |



POLYMER STRAIN INSULATORS

| Part Number | Description | Brand | Origin | Rated kN | End Fittings | Creepage | Sheds | Length | Colour | Weight | Box/ Pallet | Drawing |
|------------------------------------|-------------------------|-------|--------|----------|--------------------|----------|-------|--------|--------|--------|-------------|---------------|
| Polymer Strains (IEC 61109) | | | | | | | | | | | | |
| 553018 | DTR 15kV Polymer Strain | DTR | Korea | 15kV | 70 Tongue & Clevis | 459 | 4 | 347 | Grey | 0.8kg | 10/800 | ISA7-0459-AGH |
| 553026 | DTR 25kV Polymer Strain | DTR | Korea | 25kV | 70 Tongue & Clevis | 693 | 6 | 442 | Grey | 1.3kg | 10/600 | ISB7-0693-AGH |
| 553034 | DTR 35kV Polymer Strain | DTR | Korea | 35kV | 70 Tongue & Clevis | 927 | 8 | 536 | Grey | 1.4kg | 10/600 | ISC7-0927-AGH |
| 553603 | DTR 46kV Polymer Strain | DTR | Korea | 46kV | 70 Tongue & Clevis | 1070 | 8 | 644 | Grey | 1.8kg | 8/224 | ISC9-1070-CAB |



69KV POLYMER STRAIN INSULATORS

| Part Number | Description | Brand | Origin | Rated kN | End Fittings | Creepage | Sheds | Length | Colour | Weight | Box/ Pallet | Drawing |
|---|-----------------------------|-------|--------|----------|-----------------------|----------|-------|--------|--------|--------|----------------|---------------|
| 69kV Polymer Strains (IEC 61109) | | | | | | | | | | | | |
| 553700 | DTR 69kV Polymer Strain | DTR | Korea | 69kV | 70 Tongue & Clevis | 2205 | 13 | 864 | Grey | 2.9kg | 1/144 | ISD7-2205-BAB |
| 553379 | DTR 69kV L011745 Strain | DTR | Korea | 69kV | 120 Ball & Socket | 2070 | 19 | 800 | Grey | 4.4kg | 1 | SCGL019-A6800 |
| 553395 | DTR 69kV L011746Y Strain | DTR | Korea | 69kV | 120 Y Clevis & Eye | 2070 | 19 | 821 | Grey | 4.9kg | 1 | SCGL019-A2800 |
| 553387 | DTR 69kV L011746 Strain | DTR | Korea | 69kV | 120 Ball & Socket | 2449 | 17 | 859 | Grey | 5.4kg | 1 | SCVL017-A6800 |
| 553409 | DTR 69kV L066096 Strain | DTR | Korea | 69kV | 160 Eye & Eye | 1658 | 15 | 855 | Grey | 4.6kg | 1 | SEHL015-B1100 |



Ball & Socket Suspension Insulator



Y Clevis Suspension Insulator



Eye Eye Strain Insulator

POLYMERIC SUSPENSION INSULATORS FOR TRANSMISSION

| Part Number | Description | Brand | Origin | Rated | Creep Strength | Length | Sheds | Reference | Colour | Weight | Drawing | |
|---------------------------------|---------------|-------|--------|-------|----------------|--------|-------|-----------|----------|--------|---------|---------------|
| 110kV Suspension Strains | | | | | | | | | | | | |
| 553417 | Ball & Socket | DTR | Korea | 115kV | 3754 | 120 | 1232 | 35 | L011760 | Grey | 7.1kg | SCGL035-A6801 |
| 553425 | Y Clevis | DTR | Korea | 115kV | 3754 | 120 | 1253 | 35 | L011760Y | Grey | 7.6kg | SCGL035-A2801 |
| 553433 | Ball & Socket | DTR | Korea | 115kV | 3893 | 120 | 1214 | 27 | L011761 | Grey | 8.8kg | SCGL027-A6801 |
| 553441 | Ball & Socket | DTR | Korea | 115kV | 3754 | 210 | 1241 | 35 | L011770 | Grey | 8.0kg | SFGL035-B6801 |
| 553468 | Y Clevis | DTR | Korea | 115kV | 3754 | 210 | 1262 | 35 | L011770Y | Grey | 8.5kg | SFVL035-B2801 |
| 553476 | Ball & Socket | DTR | Korea | 115kV | 3893 | 210 | 1226 | 27 | L011771 | Grey | 9.0kg | SFVL027-B6801 |
| 220kV Suspension Strains | | | | | | | | | | | | |
| 553484 | Ball & Socket | DTR | Korea | 230kV | 7121 | 120 | 2096 | 67 | L011762 | Grey | 11.9kg | SCGL067-A6811 |
| 553492 | Ball & Socket | DTR | Korea | 230kV | 7606 | 120 | 2137 | 53 | L011763 | Grey | 13.0kg | SCVL053-A6811 |
| 553506 | Ball & Socket | DTR | Korea | 230kV | 7121 | 210 | 2105 | 67 | L011772 | Grey | 12.4kg | SFGL067-B6811 |
| 553514 | Ball & Socket | DTR | Korea | 230kV | 7607 | 210 | 2149 | 53 | L011773 | Grey | 14.5kg | SCGL053-B6811 |
| 400kV Suspension Strains | | | | | | | | | | | | |
| 553522 | Ball & Socket | DTR | Korea | 500kV | 12804 | 120 | 3554 | 121 | L011764 | Grey | 18.5kg | SCGL121-A6813 |
| 553530 | Ball & Socket | DTR | Korea | 500kV | 13301 | 120 | 3557 | 93 | L011765 | Grey | 21.7kg | SCVL093-A6813 |
| 553549 | Ball & Socket | DTR | Korea | 500kV | 12804 | 210 | 3563 | 121 | L011774 | Grey | 19.5kg | SFGL121-B6813 |
| 553557 | Ball & Socket | DTR | Korea | 500kV | 13301 | 210 | 3569 | 93 | L011775 | Grey | 22.7kg | SFVL093-B6813 |



Now in AX wooden boxes



Top View

Clevis



AX Standard Profile – Tongue & Clevis

11KV TOUGHENED GLASS DISCS FOR DISTRIBUTION (IEC 383-1)

| Part Number | Description | Brand | Origin | Strength | Coupling | Diameter | Creepage | Colour | Unit | Weight | Box/ Pallet | Drawing |
|-------------------------------|------------------------|-------|--------|----------|-----------------|----------|----------|--------|------|--------|----------------|-----------|
| Standard Profile Discs | | | | | | | | | | | | |
| 119350 | AX 11kV T&C Glass Disc | AX | China | 70kN | Tongue & Clevis | 255mm | 320mm | Clear | Each | 4.1kg | 3/96 | D221-0519 |
| 119407 | AX 11kV B&S Glass Disc | AX | China | 70kN | Ball & Socket | 255mm | 320mm | Clear | Each | 3.8kg | 3/96 | D221-0501 |
| Fog Profile Disc | | | | | | | | | | | | |
| 119415 | AX 11kV B&S Fog Disc | AX | China | 70kN | Ball & Socket | 280mm | 450mm | Clear | Each | 5.3kg | 3/96 | LXHY5-70 |



DTR 12kV Class 1 (CA12/10.HD)



Made in Korea



32mm Top



Bracket



Base Fitting

12KV POLYMER SURGE ARRESTERS (IEC 60099-4)

| Part Number | Description | Brand | Origin | Rated Voltage | Rated Current | MCOV | Top Fitting | Bracket | Colour | Box/ Pallet | Drawing |
|-----------------------------|-----------------------|-------|--------|---------------|---------------|--------|-------------|---------|--------|-------------|---------------|
| 12kV Surge Arresters | | | | | | | | | | | |
| 553042 | DTR 12kV 10kA Class 1 | DTR | Korea | 12kV | 10kA | 10.2kV | 32mm | Nema | Grey | 3/168 | CA12/10.HD |
| 553077 | DTR 12kV 10kA Class 1 | DTR | Korea | 12kV | 10kA | 10.2kV | 100mm | Nema | Grey | 3/168 | CA12/10.HD100 |
| 553204 | DTR 12kV 10kA Class 2 | DTR | Korea | 12kV | 10kA | 9.6kV | 32mm | Nema | Grey | 3/168 | CA12/10.2D |



DTR 15kV (CA15/10.2D)

15KV POLYMER SURGE ARRESTER (IEC 60099-4)

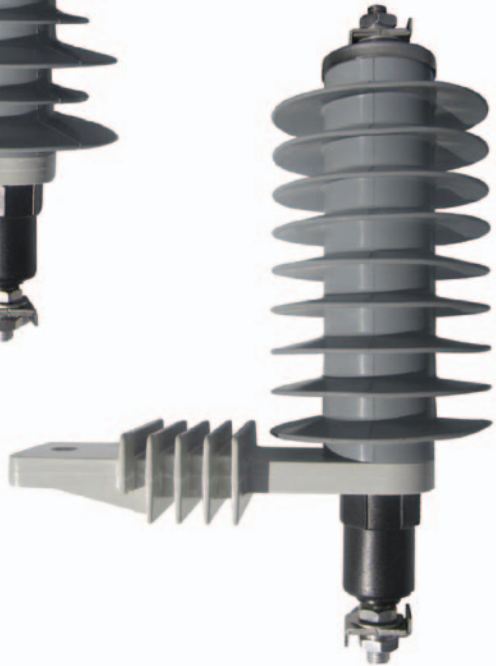
| Part Number | Description | Brand | Origin | Rated Current | MCOV | Top Fitting | Bracket Colour | Box/ Pallet | Drawing |
|----------------------------|-----------------------|-------|--------|---------------|--------|-------------|----------------|-------------|------------|
| 15kV Surge Arrester | | | | | | | | | |
| 553646 | DTR 15kV 10kA Class 2 | DTR | Korea | 15kV 10kA | 12.0kV | 32mm | Nema Grey | 3/168 | CA15/10.2D |



DTR 18kV Alt Sheds (CA18/10.1D)



DTR 18kV (CA18/10.2D)



18KV POLYMER SURGE ARRESTERS (IEC 60099-4)

| Part Number | Description | Brand | Origin | Rated Current | MCOV | Top Fitting | Bracket | Colour | Box/ Pallet | Drawing |
|-----------------------------|-----------------------------------|-------|--------|---------------|--------|-------------|---------|--------|-------------|------------|
| 18kV Surge Arresters | | | | | | | | | | |
| 553050 | DTR 18kV 10kA Class 1 (Alt Sheds) | DTR | Korea | 18kV 10kA | 15.3kV | 32mm | Nema | Grey | 3/168 | CA18/10.1D |
| 553565 | DTR 18kV 10kA Class 2 | DTR | Korea | 18kV 10kA | 15.3kV | 32mm | Nema | Grey | 3/168 | CA18/10.2D |



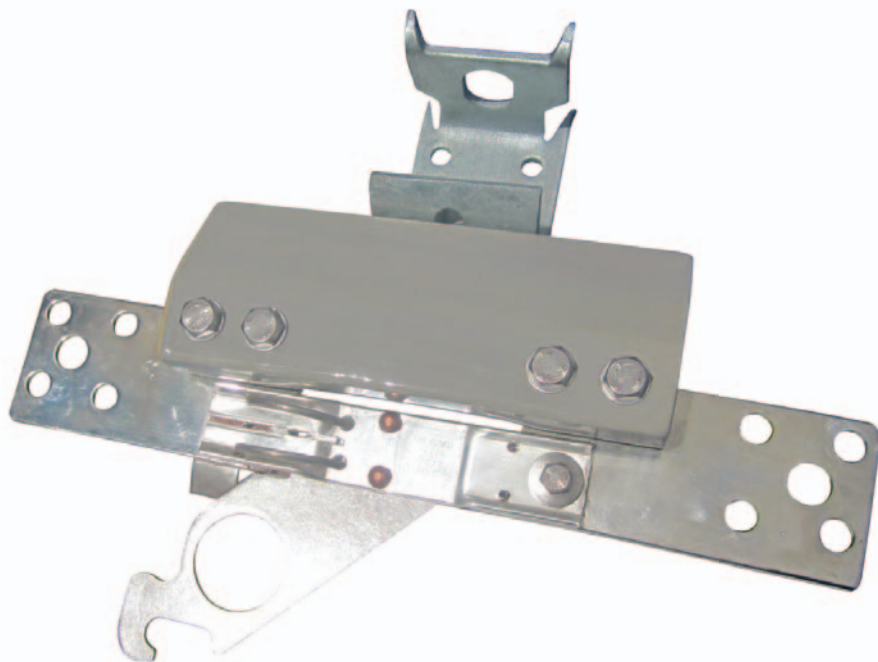
LVI Bottom View



LVI Top View



LVI End View



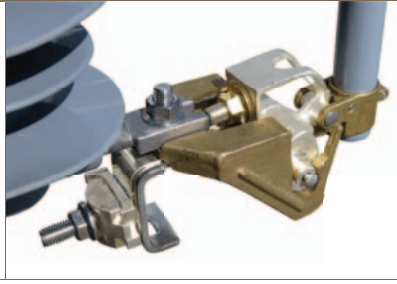
NGK Stanger LVI (3/box)

SOLID LINK LVI & FUSED LINK LVFI ISOLATORS

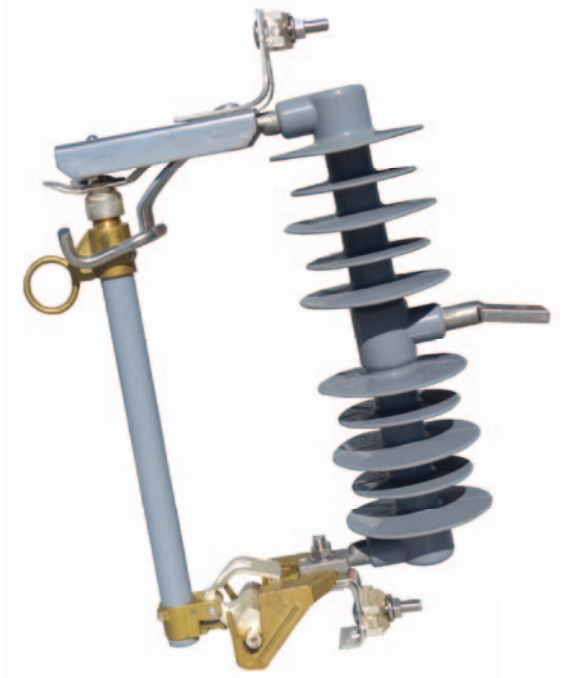
| Part Number | Description | Brand | Origin | Rated Current | Contacts | Standard | Weight | Box/ Pallet | Drawing |
|-------------------------------|----------------------------------|-------|-----------|---------------|----------|-----------------------|--------|----------------|---------|
| Single Solid Link LVI | | | | | | | | | |
| 258377 | NGK-S Low Voltage Isolator | NGK-S | Australia | 480V | 630A | Silver M12 AS175-1975 | 2.5kg | 3 | NZ4284 |
| Single Fused Link LVFI | | | | | | | | | |
| 258385 | NGK-S Low Voltage Fused Isolator | NGK-S | Australia | 480V | 630A | Silver M12 AS175-1975 | 3.3kg | 3 | NZ4286 |



Stainless Steel



Hinge



DTR Polymer 150BIL EDO with Stainless Steel Fittings

POLYMER EDO DROPOUTS (IEC ??)

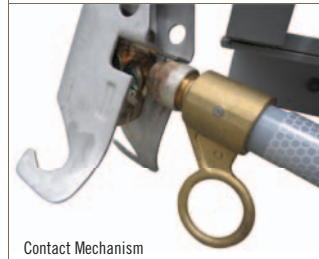
| Part Number | Description | Brand | Origin | Rated BIL | Current | Creepage | Length | Colour | Weight | Box/ Pallet | Drawing |
|---------------------------------------|-------------------------------|-------|--------|------------|---------|----------|--------|--------|--------|-------------|------------------|
| EDO – Stainless Steel Fittings | | | | | | | | | | | |
| 553743 | DTR 27kV 150BIL Stainless EDO | DTR | Korea | 27kV 150kV | 100A | 580mm | 382mm | Grey | | 1/60 | SCSNL15-AP1-100C |
| EDO – Mixed Metal Fittings | | | | | | | | | | | |
| 553190 | DTR 27kV 150BIL EDO Cutout | DTR | Korea | 27kV 150kV | 100A | 580mm | 382mm | Grey | 5.4kg | 1/60 | CS0270-0580-100E |



12-24kV 150BIL EDO (100A)



Hinge



Contact Mechanism

100A PORCELAIN EDO C-TYPE DROPOUT SWITCHES

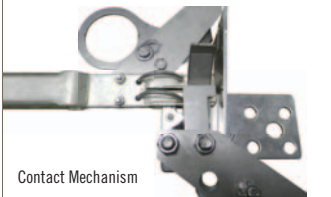
| Part Number | Description | Brand Origin | BIL | Current | Creepage | Breaking | Colour | Standard | Weight | Box/ Pallet | Drawing |
|----------------------------------|----------------------------------|-----------------|-------|---------|----------|-----------|--------|---------------|--------|-------------|-----------------|
| 150BIL EDO with Fuse Tube | | | | | | | | | | | |
| 539023 | NGK-S 12/24kV Porcelain EDO | NGK-S Australia | 150kV | 100A | 475mm | 8kA@ 12kV | Grey | AS/NZS 1033.1 | 12.8kg | 1/49 | 72298/15 |
| 170BIL EDO with Fuse Tube | | | | | | | | | | | |
| 539031 | NGK-S 24/36kV Porcelain EDO | NGK-S Australia | 170kV | 100A | 600mm | 6kA@ 24kV | Grey | AS/NZS 1033.1 | 13.3kg | 1/28 | 72299/ 27NORQEB |
| EDO Optional Accessories | | | | | | | | | | | |
| | NGK-S EDO Earthing Stirrup | NGK-S Australia | | | | | | | | | 70450/6 |
| | NGK-S EDO Fire Prevention Device | NGK-S Australia | | | | | | | | | 72835 |
| | NGK-S EDO Birdproof Cover | NGK-S Australia | | | | | | | | | 72905 |



Made in Australia



Hinge



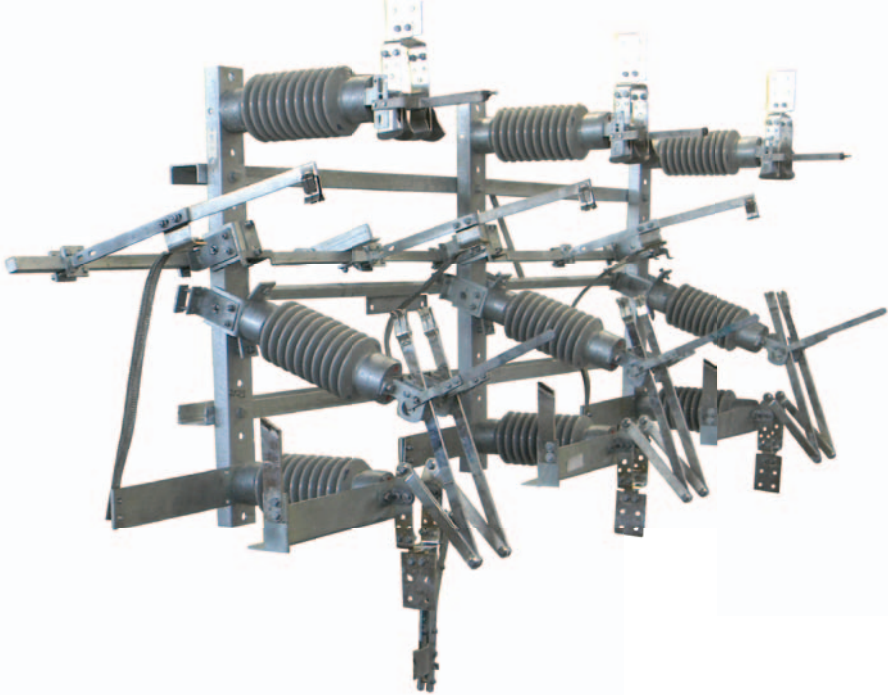
Contact Mechanism



12-14kV 150BIL HVI (630A)

630A PORCELAIN HVI C-TYPE SOLID LINKS

| Part Number | Description | Brand | Origin | BIL | Current | Creepage S/T Current | Colour | Standard | Weight | Box/ Pallet | Drawing |
|--|---|-------|-----------|-------|---------|----------------------|--------------|----------|-------------|-------------|----------------|
| 125BIL HVI | | | | | | | | | | | |
| 253464 | NGK-S 12kV Single Pole HVI | NGK-S | Australia | 125kV | 630A | 300mm | 20kA at 1sec | Grey | AS/NZS 1025 | 9.0kg | 1/28 70416 |
| 253014 | NGK-S 12/24kV Single Pole HVI | NGK-S | Australia | 125kV | 630A | 300mm | 20kA at 1sec | Grey | AS/NZS 1025 | 9.0kg | 1/28 70416/NSW |
| 150BIL HVI | | | | | | | | | | | |
| 539058 | NGK-S 12/24kV Single Pole HVI | NGK-S | Australia | 150kV | 630A | 475mm | 20kA at 1sec | Grey | AS/NZS 1306 | 10.5kg | 1/28 70414/NSW |
| 170BIL HVI | | | | | | | | | | | |
| 539228 | NGK-S 24/36kV Single Pole HVI | NGK-S | Australia | 170kV | 630A | 600mm | 20kA at 1sec | Grey | AS/NZS 1306 | 12.0kg | 1/28 70423/1 |
| 539007 | NGK-S 24/36kV Single Pole HVI | NGK-S | Australia | 170kV | 630A | 660mm | 20kA at 1sec | Grey | AS/NZS 1306 | 12.0kg | 1/28 70423/1EE |
| 539236 | NGK-S 24/36kV Single Pole HVI + Earth Stirrup | NGK-S | Australia | 170kV | 630A | 600mm | 20kA at 1sec | Grey | AS/NZS 1306 | 13.5kg | 1/28 70423/2CE |
| Universal Mounting Brackets for NGK-S HVI | | | | | | | | | | | |
| 253006 | NGK-S HVI Mounting Bracket (Z) | NGK-S | Australia | | | | | | | | 69196 |
| 253472 | NGK-S HVI Mounting Bracket (Y) | NGK-S | Australia | | | | | | | | 69194 |



NGK Stanger PR3

MANUAL PR3 AIR BREAK SWITCHES

| Part Number | Description | Brand | Origin | Rating | Current | BIL | Rate S/T Current | Standard | Drawing |
|--|---------------------------------------|-------|-----------|--------|---------|-------|------------------|----------------------|---------|
| Manual Flicker Style Air Break Switches | | | | | | | | | |
| 539139 | NGK-S 12kV PR3 Vert/Hor ABS | NGK-S | Australia | 12kV | 630A | 150kV | 20kA at 1sec | AS/NZS ISO 9001:2008 | 69118 |
| 539147 | NGK-S 24kV PR3 Vert/Hor ABS | NGK-S | Australia | 24kV | 630A | 150kV | 16kA at 1sec | AS/NZS ISO 9001:2008 | 69119 |
| 539155 | NGK-S 36kV PR3 Vert/Hor ABS | NGK-S | Australia | 36kV | 630A | 200kV | 20kA at 1sec | AS/NZS ISO 9001:2008 | 69120 |
| Optional Accessories for NGK-S ABS | | | | | | | | | |
| | NGK-S ABS Earth Switch (24&36kV only) | NGK-S | Australia | | | | | | |
| | NGK-S ABS Dropout Fuse Mount | NGK-S | Australia | | | | | | |
| | NGK-S ABS Crossarm | NGK-S | Australia | | | | | | |
| | NGK-S ABS Operating Handle | NGK-S | Australia | | | | | | |
| | NGK-S ABS Mounting Bracket Kit | NGK-S | Australia | | | | | | |
| | NGK-S ABS Double Break Interrupter | NGK-S | Australia | | | | | | |
| | NGK-S ABS ARCBREK 5 Interrupter | NGK-S | Australia | | | | | | |



Compact 12kV SF6 (NGK Stanger 91776)



Compact 24kV SF6

MANUAL SF6 LOAD BREAK GAS SWITCHES

| Part Number | Description | Brand Origin | Rating Current | Making Current | Standard | Weight | Drawing |
|---|---|-----------------|----------------|----------------|----------------------|--------|---------|
| Manual SF6 Gas Switches | | | | | | | |
| 539082 | NGK-S 12kV SF6 Compact Gas Switch | NGK-S Australia | 12kV 630A | 41.6kA | AS/NZS ISO 9001:2008 | 75kg | 91776 |
| 539090 | NGK-S 24kV SF6 Compact Gas Switch | NGK-S Australia | 24kV 630A | 41.6kA | AS/NZS ISO 9001:2008 | 95kg | 90030 |
| 539104 | NGK-S 36kV SF6 Gas Switch | NGK-S Australia | 36kV 630A | 33kA | AS/NZS ISO 9001:2008 | 180kg | 90036 |
| Optional Accessories for all SF6 | | | | | | | |
| | NGK-S SF6 Safety Locking Kit | NGK-S Australia | | | | | 91777 |
| Optional Accessories for 12&24kV SF6 | | | | | | | |
| | NGK-S SF6 12/24 Crossarm | NGK-S Australia | | | | | 91743 |
| | NGK-S SF6 12/24 Surge Diverter Mounting Kit | NGK-S Australia | | | | | 91806 |
| | NGK-S SF6 12/24 Mid Pole Actuator Kit | NGK-S Australia | | | | | 95110 |
| Optional Accessories for 36kV SF6 | | | | | | | |
| | NGK-S SF6 36 Crossarm | NGK-S Australia | | | | | 90481 |
| | NGK-S SF6 36 Pole Top Mounting Kit | NGK-S Australia | | | | | 90498 |
| | NGK-S SF6 36 Surge Diverter Mounting Kit | NGK-S Australia | | | | | 95001 |

FULTON 12mm Earth Rods & Accessories

12mm 1800mm 500micron Copper-Clad Earth Rod (to AS1572)



BC12 Brass Coupler



TPS12 Star Point



REB1210-70



REX16-120



REC35-120



DHT12 Driving Head



10/Tube

FULTON 12mm EARTH RODS & ACCESSORIES

| Part Number | Description | Brand | Origin | Diameter | Length | Detail | Unit | Weight | Pack Qty | Drawing |
|---|------------------------------------|--------|-----------|----------|--------|-----------------------------------|------|--------|----------|---------|
| 12mm Copper-Clad Earth Rods (1.8 & 2.0m) | | | | | | | | | | |
| 523097 | Fulton CDR-12-1800 Earth Rod | Fulton | Australia | 12mm | 1800mm | 500micron CU to AS1572 | Each | 2.0kg | 10 | 657-A4 |
| 523801 | Fulton CDR-12-2000 Earth Rod | Fulton | Australia | 12mm | 2000mm | 500micron CU to AS1572 | Each | 2.3kg | 10 | 1310-A4 |
| Accessories for 12mm Earth Rods | | | | | | | | | | |
| 523100 | Fulton BC12 Brass Coupler | Fulton | Australia | Fit 12mm | 70mm | | Each | 70g | 20 | 615-A4 |
| 523119 | Fulton TPS12 Star Point | Fulton | Australia | Fit 12mm | 72mm | | Each | 100g | 20 | 658-A4 |
| 523755 | Fulton 12D-1 Brass Clip | Fulton | Australia | Fit 12mm | | | Each | 20g | 20 | |
| 523178 | Fulton ERDP-1 Driving Pin | Fulton | Australia | | 32mm | | Each | 10g | 25 | 1161-A4 |
| 523461 | Fulton DHT12 Driving Head Tool | Fulton | Australia | Fit 12mm | 102mm | | Each | 300g | 5 | 659-A4 |
| 523488 | Fulton K900DM12 Kango Driving Moil | Fulton | Australia | Fit 12mm | 227mm | | Each | 570g | 1 | 1311-A4 |
| Clamps for 12mm Earth Rods | | | | | | | | | | |
| 523070 | Fulton REB1210-70 Clamp | Fulton | Australia | | 40mm | Cable Range 10-70mm ² | Each | 100g | 20 | 1240-A4 |
| 523844 | Fulton REX16-120 Clamp | Fulton | Australia | | 64mm | Cable Range 16-120mm ² | Each | 260g | 10 | 945-A4 |
| 523089 | Fulton REC35-120 Clamp | Fulton | Australia | | 67mm | Cable Range 35-120mm ² | Each | 150g | 10 | 611-A4 |



FULTON 15mm/19mm EARTH RODS & ACCESSORIES

| Part Number | Description | Brand | Origin | Diameter | Length | Detail | Unit | Weight | Pack Qty | Drawing |
|--|--|--------|-----------|----------|--------|--------------------------------------|------|--------|----------|---------|
| 15mm Copper-Clad Earth Rod | | | | | | | | | | |
| 524131 | Fulton CDR-15-1800 Earth Rod | Fulton | Australia | 15mm | 1800mm | 500micron CU to AS1572 | Each | 2.3kg | 10 | |
| Accessories for 15mm Earth Rods | | | | | | | | | | |
| 523518 | Fulton BC15 Brass Coupler | Fulton | Australia | Fit 15mm | 70mm | - | Each | 80g | 20 | 614-A4 |
| 523577 | Fulton TPS15 Star Point | Fulton | Australia | Fit 15mm | 72mm | - | Each | 95g | 10 | 617-A4 |
| 524158 | Fulton DHT15 Driving Head Tool | Fulton | Australia | Fit 15mm | 102mm | - | Each | 300g | 1 | 1239-A4 |
| 524360 | Fulton K900DM15 Driving Moil | Fulton | Australia | Fit 15mm | 222mm | - | Each | 570g | 1 | 1309-A4 |
| Clamps for 15mm Earth Rods | | | | | | | | | | |
| 523844 | Fulton REX16-120 Clamp | Fulton | Australia | | 40mm | Cable Range 16-120mm ² | Each | 260g | 10 | 945-A4 |
| 524352 | Fulton RET25-120/3 Clamp for 3 Cables | Fulton | Australia | | 74mm | Cable Range 25-120mm ² | Each | 700g | 10 | 1290-A4 |
| 523089 | Fulton REC35-120 Clamp | Fulton | Australia | | 67mm | Cable Range 35-120mm ² | Each | 150g | 10 | 611-A4 |
| 19mm Copper-Clad Earth Rod | | | | | | | | | | |
| 524123 | Fulton CDR-19-1800 Earth Rod | Fulton | Australia | 19mm | 1800mm | 500micron CU to AS1572 | Each | 4.5kg | 5 | 1236-A4 |
| Accessories for 19mm Earth Rods | | | | | | | | | | |
| 523135 | Fulton BC19 Brass Coupler | Fulton | Australia | Fit 19mm | 95mm | - | Each | 140g | 20 | 1301-A4 |
| 523151 | Fulton TP19 Earth Rod Point | Fulton | Australia | Fit 19mm | 60mm | - | Each | 95g | 10 | 1304-A4 |
| 523143 | Fulton DHT19 Driving Head Tool | Fulton | Australia | Fit 19mm | 102mm | - | Each | 300g | 1 | 1305-A4 |
| 524379 | Fulton K900DM19 Driving Moil | Fulton | Australia | Fit 19mm | 222mm | - | Each | 570g | 1 | 1306-A4 |
| Clamps for 19mm Earth Rods | | | | | | | | | | |
| 523615 | Fulton EC2 Earth Clamp | Fulton | Australia | | 110mm | Cable Range 16-25mm ² | Each | 485g | 10 | 1308-A4 |
| 523844 | Fulton REX16-120 Clamp | Fulton | Australia | | 40mm | Cable Range 16-120mm ² | Each | 260g | 10 | 945-A4 |
| 524352 | Fulton RET25-120/3 Clamp for 3 Cables | Fulton | Australia | | 74mm | Cable Range 25-120mm ² | Each | 700g | 10 | 1290-A4 |



AVON HDG & STAINLESS STEEL EARTH RODS

| Part Number | Description | Brand | Origin | Length | Diameter | Construction | Unit | Weight | Pack Qty | Drawing |
|---|--|-------|--------|--------|----------|---------------|------|--------|----------|---------|
| 16mm HDG Steel Earth Rods | | | | | | | | | | |
| 537071 | Avon 16mm Pointed Earth Rod (no tab) | Avon | NZ | 2.0m | 16mm | HDG Steel | Each | 3.3kg | 10 | AA24005 |
| 537098 | Avon 16mm Pointed Earth Rod (with HD12A Tab) | Avon | NZ | 2.0m | 16mm | HDG Steel | Each | 3.3kg | 10 | AA24009 |
| Coupler for Avon HDG Earth Rods | | | | | | | | | | |
| 537101 | Avon 16mm HDG Earth Rod Coupler | Avon | NZ | 110mm | 16mm | HDG Steel | Each | 200g | 10 | AA24024 |
| 12mm Stainless Steel Earth Rod | | | | | | | | | | |
| 537128 | Avon 12mm Tapered Earth Rod (no tab) | Avon | NZ | 1.5m | 12mm | 316 Stainless | Each | 1.4kg | 10 | AA24021 |
| Coupler for Avon Stainless Earth Rod | | | | | | | | | | |
| 537136 | Avon 12mm Stainless Earth Rod Coupler | Avon | NZ | 85mm | 12mm | 316 Stainless | Each | 50g | 10 | AA24015 |



Good Earth



Fulton Earthing Rod Pit

FULTON EARTH ROD PIT & EARTHING COMPOUND

| Part Number | Description | Brand | Origin | Footprint | Depth | Detail | Unit | Weight | Pack Qty | Drawing |
|---------------------------------|------------------------|--------|-----------|---------------------------|-------|--------------------------|------|--------|----------|---------|
| Earth Rod Inspection Pit | | | | | | | | | | |
| 523763 | Fulton PT205 Pit + Lid | Fulton | Australia | 256x256 | 212mm | Black Poly + Grey HD Lid | Each | 1.8kg | 1 | 927-A4 |
| Earthing Compound | | | | | | | | | | |
| 523704 | Fulton 15kg Good Earth | Fulton | Australia | Covers 0.03m ³ | — | Bentonite/ Gypsum mix | Bag | 15kg | 1 | |



SL-4/12



TODL-7/19



SCI-6/19 One Bolt



CTC-1



CTC-2



SC2-6/19 Two Bolt

TAPS, LUGS, SERVICE & CTC BOLTED CONNECTORS

| Part Number | Description | Brand | Origin | Construction | Conductor | Conductor | Unit | Weight | Box Qty |
|--|--------------------------------|--------|-----------|-------------------|----------------|--------------|------|--------|---------|
| Aluminium Service Taps | | | | | | | | | |
| 524344 | Fulton SL-4/12 Service Tap | Fulton | Australia | Aluminium | 7/3.00-7/4.75 | 9.0-14.3mm | Each | 100g | 10 |
| 524166 | Fulton SL-7/19 Service Tap | Fulton | Australia | Aluminium | 7/4.5-19/3.75 | 13.5-18.8mm | Each | 200g | 10 |
| Aluminium Lugs | | | | | | | | | |
| 524174 | Fulton TODL-7/19 Lug | Fulton | Australia | Aluminium | 7/2.5-19/3.75 | 7.0-19.0mm | Each | 375g | 10 |
| 524182 | Fulton TODL-7/19ET 'Bling' Lug | Fulton | Australia | Bright ETP Ali | 7/2.5-19/3.75 | 7.0-19.0mm | Each | 375g | 10 |
| SC Aluminium Service Connectors | | | | | | | | | |
| 524190 | Fulton SC1-6/19 One-Bolt | Fulton | Australia | Ali + Copper Loop | 7/2.25-19/3.75 | 6.75-18.75mm | Each | 200g | 10 |
| 524204 | Fulton SC2-6/19 Two-Bolt | Fulton | Australia | Ali + Copper Loop | 7/2.25-19/3.75 | 6.75-18.75mm | Each | 400g | 10 |
| CTC Consumer Tee Connectors | | | | | | | | | |
| 524212 | Fulton CTC-1 Single Leg | Fulton | Australia | Aluminium | 7/2.25-19/3.75 | 6.75-18.75mm | Each | 175g | 10 |
| 524220 | Fulton CTC-1 Double Leg | Fulton | Australia | Aluminium | 7/2.25-19/3.75 | 6.75-18.75mm | Each | 260g | 10 |



TOD-7/19



TOD-4/12 Double



TOD-7/19 Triple



CV4P



CV6P



CV9P

TEE-OFF & RISING MAIN CONNECTORS

| Part Number | Description | Brand | Origin | Construction | Stainless | Conductor | Length | Unit | Weight | Box Qty |
|---------------------------------------|---------------------------------------|--------|-----------|--------------|-----------|------------------------|--------|------|--------|---------|
| Tee-Off Connectors | | | | | | | | | | |
| 524018 | Fulton TOD-4/12 Single Bolted Tee-Off | Fulton | Australia | Aluminium | 304 | 4-12mm ² | 51 | Each | 200g | 50 |
| 523453 | Fulton TOD-7/19 Single Bolted Tee-Off | Fulton | Australia | Aluminium | 304 | 7-19mm ² | 70 | Each | 237g | 50 |
| 523003 | Fulton TOD-4/12 Double Bolted Tee-Off | Fulton | Australia | Aluminium | 304 | 4-12mm ² | 70 | Each | 400g | 50 |
| 523011 | Fulton TOD-7/19 Double Bolted Tee-Off | Fulton | Australia | Aluminium | 304 | 7-19mm ² | 95 | Each | 475g | 30 |
| 523720 | Fulton TOD-7/19 Triple Bolted Tee-Off | Fulton | Australia | Aluminium | 304 | 7-19mm ² | 143 | Each | 800g | 10 |
| 3-Piece Rising Main Connectors | | | | | | | | | | |
| 524026 | Fulton CV3P Rising Main | Fulton | Australia | Gunmetal ETP | 316 | 50-95mm ² | 58 | Each | | 15 |
| 524034 | Fulton CV4P Rising Main | Fulton | Australia | Gunmetal ETP | 316 | 120-240mm ² | 58 | Each | | 15 |
| 524042 | Fulton CV5P Rising Main | Fulton | Australia | Gunmetal ETP | 316 | 120-300mm ² | 58 | Each | | 15 |
| 524050 | Fulton CV6P Rising Main | Fulton | Australia | Gunmetal ETP | 316 | 120-240mm ² | 70 | Each | 950g | 15 |
| 523747 | Fulton CV8P Rising Main | Fulton | Australia | Gunmetal ETP | 316 | 300-800mm ² | 77 | Each | | 15 |
| 524069 | Fulton CV9P Rising Main | Fulton | Australia | Gunmetal ETP | 316 | 240-500mm ² | 86 | Each | 1.4kg | 15 |



B22T



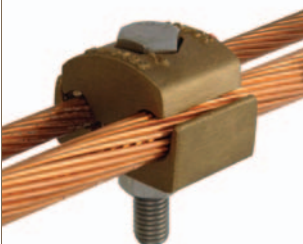
B24T



B28T



CT03/11



SCT025



DCT025

SPLIT BOLT CONNECTORS & PARALLEL GROOVE CLAMPS

| Part Number | Description | Brand Origin | Construction | Conductor | Conductor | Conductor | Unit Weight | Box Qty |
|------------------------------|------------------------------|------------------|--------------|--------------------|-----------|-----------|-------------|---------|
| Split Bolt Connectors | | | | | | | | |
| 524239 | Fulton B22T Split Bolt Clamp | Fulton Australia | ETP Brass | 16mm ² | 5.1mm | 7/.064 | Each | 50 |
| 524247 | Fulton B24T Split Bolt Clamp | Fulton Australia | ETP Brass | 35mm ² | 8.3mm | 7/.104 | Each | 25 |
| 524255 | Fulton B25T Split Bolt Clamp | Fulton Australia | ETP Brass | 70mm ² | 10.7mm | 19/.083 | Each | 25 |
| 524263 | Fulton B26T Split Bolt Clamp | Fulton Australia | ETP Brass | 95mm ² | 12.6mm | 19/.101 | Each | 10 |
| 524271 | Fulton B28T Split Bolt Clamp | Fulton Australia | ETP Brass | 185mm ² | 17.64mm | 37/.130 | Each | 4 |

| Part Number | Description | Brand Origin | Joining | Length | Construction | Unit Weight | Box Qty |
|-------------------------------|---|------------------|-----------------------|--------|------------------|-------------|---------|
| Parallel Groove Clamps | | | | | | | |
| 524298 | Fulton CT03/11 M8 Single Bolt PG Clamp | Fulton Australia | 10-70mm ² | 25mm | CU + 304 Fixings | Each 120g | 10 |
| 524301 | Fulton DCT03/11 M8 Double Bolt PG Clamp | Fulton Australia | 10-70mm ² | 51mm | CU + 304 Fixings | Each 240g | 10 |
| 524328 | Fulton SCT025 M12 Single Bolt PG Clamp | Fulton Australia | 35-150mm ² | 34mm | CU + 304 Fixings | Each 400g | 5 |
| 524336 | Fulton DCT025 M12 Double Bolt PG Clamp | Fulton Australia | 35-150mm ² | 71mm | CU + 304 Fixings | Each 790g | 5 |



Top View



Back View



Bottom View



One Size Fits All ECW-1 (25-70mm²)

FULTON WEDGE CLAMP

| Part Number | Description | Brand | Origin | Conductor Range | Length | Construction | Bolts | Unit Weight | Pack Qty | Drawing |
|--------------------------------------|--------------|--------|-----------|----------------------|--------|--------------|---------------|-------------|----------|---------|
| One-Size-Fits-All Wedge Clamp | | | | | | | | | | |
| 524107 | Fulton ECW-1 | Fulton | Australia | 25-70mm ² | 56mm | Gunmetal ETP | 304 Stainless | Each 950g | 25 | 595-A4 |



Lineguard 160A



Mini Wedge

LINEGUARD DISCONNECTS & MINI WEDGE FUSEHOLDER

| Part Number | Description | Brand | Origin | Amps | Colour | Detail | Complies With | Unit Weight | Box Qty | |
|--|---|-------|--------|------|--------|-------------------------------|---------------|-------------|---------|----|
| Lineguard Disconnects | | | | | | | | | | |
| 468177 | NZI 100A Single Phase Ferrule Disconnect | NZI | NZ | 100A | Black | Polyamide & Nickle-Plated NFM | IEC 60947 | Each | 545g | 20 |
| 468185 | NZI 160A Single Phase NH00 Disconnect | NZI | NZ | 160A | Black | Polyamide & Nickle-Plated NFM | IEC 60947 | Each | 505g | 20 |
| Porcelain Mini Wedge Fuseholder | | | | | | | | | | |
| 468789 | NZI Mini Wedge Offset Tag Carrier/Base Complete | NZI | NZ | 200A | Grey | Porcelain & ETPNFM | AS/NZS 3947 | Each | 3.0kg | 5 |



3 x FSD 401



FSD 401



FSD 401 Bracket

FSD400



FSD401

FSD THREE & SINGLE PHASE DIN FUSE DISCONNECTS (AS/NZS 3947-1)

| Part Number | Description | Brand | Origin | Rated Amps | Fits | Terminations | Weight | Box Qty | Drawing | |
|-----------------------------|------------------------------------|-------|-----------|------------|------|--------------|-----------------------------|---------|---------|---------|
| FSD 160A Disconnects | | | | | | | | | | |
| 539252 | NGK-S FSD160 Single Phase | NGK-S | Australia | 415V | 160A | NH00 | IPC/IPC 6-95mm ² | 1.0kg | 1 | 71932 |
| 539260 | NGK-S Bracket for 3 x FSD160 | NGK-S | Australia | 415V | | | | 1.7kg | 1 | 72485/2 |
| FSD 250A Disconnects | | | | | | | | | | |
| 539279 | NGK-S FSD250 Three Phase + Bracket | NGK-S | Australia | 415V | 250A | NH1&2 | IPC/IPC 6-95mm ² | 6.0kg | 1 | 72477/1 |
| FSD 400A Disconnects | | | | | | | | | | |
| 468908 | NGK-S FSD400 Three Phase + Bracket | NGK-S | Australia | 415V | 400A | NH1&2 | 4.76mm T/Palms | 6.0kg | 1 | 71969/5 |
| 468916 | NGK-S FSD401 Single Phase | NGK-S | Australia | 415V | 400A | NH1&2 | 4.76mm T/Palms | 2.0kg | 1 | 73401/5 |
| 469106 | NGK-S Bracket for 3 x FSD401 | NGK-S | Australia | 415V | | | | 1.7kg | 1 | 72923 |
| FSD 630A Disconnect | | | | | | | | | | |
| 468819 | NGK-S FSD631 Single Phase | NGK-S | Australia | 415V | 630A | NH2&3 | 6.35mm T/Palms | 2.0kg | 1 | 73631/5 |



60A Rewireable



30A Rewireable



Rewireable Cutout

REWIREABLE PORCELAIN POLE MOUNTED CUTOUTS

| Part Number | Description | Brand | Origin | Amps | Wired? | Glaze | Construction | Unit | Weight | Box Qty |
|--------------------------------|---------------------------------|-------|--------|------|--------|-------|--------------------|------|--------|---------|
| 30A Rewireable Cutouts | | | | | | | | | | |
| 144029 | NZI 30A RW Plug + Base | NZI | NZ | 30A | | Grey | Porcelain & ETPNFM | Each | 690g | 30 |
| 146137 | NZI 30A RW Plug + Base + Wired | NZI | NZ | 30A | Wired | Grey | Porcelain & ETPNFM | Each | 690g | 30 |
| 144452 | NZI 30A RW Plug Only | NZI | NZ | 30A | | Grey | Porcelain & ETPNFM | Each | 190g | 54 |
| 144061 | NZI 30A RW Plug + Wired | NZI | NZ | 30A | Wired | Grey | Porcelain & ETPNFM | Each | 190g | 30 |
| 144495 | NZI 30A Universal Cutout Base | NZI | NZ | 30A | | Grey | Porcelain & ETPNFM | Each | 460g | 30 |
| 60A Rewireable Cutouts | | | | | | | | | | |
| 144398 | NZI 60A RW Plug + Base | NZI | NZ | 60A | | Grey | Porcelain & ETPNFM | Each | 1.5kg | 15 |
| 146110 | NZI 60A RW Plug + Base + Wired | NZI | NZ | 60A | Wired | Grey | Porcelain & ETPNFM | Each | 1.5kg | 15 |
| 144444 | NZI 60A RW Plug Only | NZI | NZ | 60A | | Grey | Porcelain & ETPNFM | Each | 380g | 30 |
| 146129 | NZI 60A RW Plug + Wired | NZI | NZ | 60A | Wired | Grey | Porcelain & ETPNFM | Each | 380g | 15 |
| 144509 | NZI 60A Universal Cutout Base | NZI | NZ | 60A | | Grey | Porcelain & ETPNFM | Each | 1.1kg | 15 |
| 100A Rewireable Cutouts | | | | | | | | | | |
| 144916 | NZI 100A RW Plug + Base | NZI | NZ | 100A | | Grey | Porcelain & ETPNFM | Each | 3.1kg | 6 |
| 146145 | NZI 100A RW Plug + Base + Wired | NZI | NZ | 100A | Wired | Grey | Porcelain & ETPNFM | Each | 3.1kg | 6 |
| 144959 | NZI 100A RW Plug Only | NZI | NZ | 100A | | Grey | Porcelain & ETPNFM | Each | 720g | 6 |
| 144703 | NZI 100A RW Plug + Wired | NZI | NZ | 100A | Wired | Grey | Porcelain & ETPNFM | Each | 720g | 6 |



30A



60A



Top View



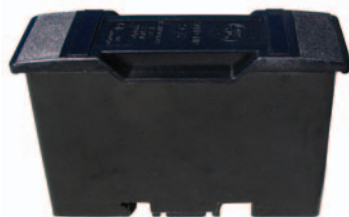
60A HRC

HRC PORCELAIN POLE MOUNTED CUTOUTS

| Part Number | Description | Brand | Origin | Amps | Fuse Included? | Glaze | Construction | Unit Weight | Box Qty |
|------------------------|----------------------------------|-------|--------|------|----------------|-------|--------------------|-------------|---------|
| 30A HRC Cutouts | | | | | | | | | |
| 144037 | NZI 30A HRC Plug + Base | NZI | NZ | 30A | – | Grey | Porcelain & ETPNFM | Each 620g | 30 |
| 144118 | NZI 30A HRC Plug Only | NZI | NZ | 30A | – | Grey | Porcelain & ETPNFM | Each 130g | 30 |
| 144495 | NZI 30A Universal Cutout Base | NZI | NZ | 30A | – | Grey | Porcelain & ETPNFM | Each 460g | 30 |
| 60A HRC Cutouts | | | | | | | | | |
| 144401 | NZI 60A HRC Plug + Base | NZI | NZ | 60A | – | Grey | Porcelain & ETPNFM | Each 1.7kg | 15 |
| 144460 | NZI 60A HRC Plug + Base + 60KR85 | NZI | NZ | 60A | 60KR85 | Grey | Porcelain & ETPNFM | Each 1.8kg | 15 |
| 144525 | NZI 60A HRC Plug Only | NZI | NZ | 60A | – | Grey | Porcelain & ETPNFM | Each 595g | 30 |
| 144630 | NZI 60A HRC Plug + 60KR85 | NZI | NZ | 60A | 60KR85 | Grey | Porcelain & ETPNFM | Each 645g | 30 |
| 144509 | NZI 60A Universal Cutout Base | NZI | NZ | 60A | – | Grey | Porcelain & ETPNFM | Each 1.1kg | 15 |



Economy G06



Safeclip SC32H



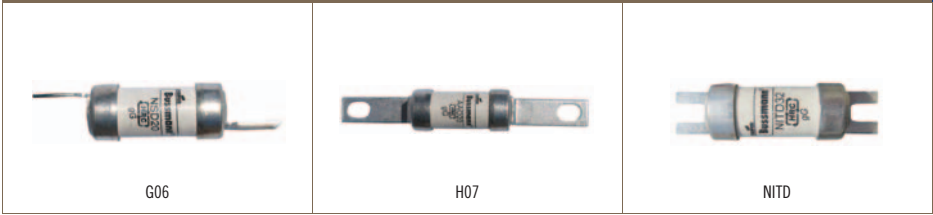
Safeloc 32NNSF



Safeloc 32NNSBS

32A FUSEHOLDERS FOR STAGGERED TAG FUSELINKS

| Part Number | Description | Brand | Origin | Rating | Voltage | Configuration | Colour | Unit | Weight | Box Qty |
|---|---|----------|--------|--------|---------|-------------------------|--------|------|--------|---------|
| Economy G06 Fuseholders (AS/NZS 60269) | | | | | | | | | | |
| 540161 | 32A G06 EE/EE Fuseholder | None | China | 32A | 550V | End Entry End Entry | Black | Each | 85g | 5 |
| 540757 | 32A G06 BE/BE Fuseholder | None | China | 32A | 550V | Back Entry Back Entry | Black | Each | 85g | 5 |
| Safeclip NSD Fuseholder (IEC 60269) | | | | | | | | | | |
| 545031 | Bussmann GE SC32H Front Wired | Bussmann | UK | 32A | 550V | Front Wired Front Wired | Black | Each | 95g | 10 |
| Safeloc NSD Fuseholders (IEC 60269) | | | | | | | | | | |
| 545007 | Bussmann 32NNSF Front Wired | Bussmann | India | 32A | 550V | Front Wired Front Wired | Black | Each | 85g | 10 |
| 545015 | Bussmann 32NNSR Back Wired | Bussmann | India | 32A | 550V | Back Wired Back Wired | Black | Each | 85g | 10 |
| 540803 | Bussmann 32NNSBS Back Stud | Bussmann | India | 32A | 550V | Back Stud Back Stud | Black | Each | 115g | 10 |
| 545023 | Bussmann 32NNSFBS Front Wired Back Stud | Bussmann | India | 32A | 550V | Front Wired Back Stud | Black | Each | 100g | 10 |



G06, H07 & NITD HRC FUSELINKS (CLASS gG)

| Part Number | Description | Brand | Origin | Amps | Volts | Break | Tags | Unit | Box Qty |
|--------------------------------|---------------|----------|--------|------|-------|-------|----------------|------|---------|
| G06 Staggered Fuselinks | | | | | | | | | |
| 644609 | 2G06 (NSD2) | Bussmann | India | 2A | 550V | 80kA | Staggered | Each | 20 |
| 644617 | 4G06 (NSD4) | Bussmann | India | 4A | 550V | 80kA | Staggered | Each | 20 |
| 644625 | 6G06 (NSD6) | Bussmann | India | 6A | 550V | 80kA | Staggered | Each | 20 |
| 644633 | 10G06 (NSD10) | Bussmann | India | 10A | 550V | 80kA | Staggered | Each | 20 |
| 644641 | 16G06 (NSD16) | Bussmann | India | 16A | 550V | 80kA | Staggered | Each | 20 |
| 644668 | 20G06 (NSD20) | Bussmann | India | 20A | 550V | 80kA | Staggered | Each | 20 |
| 646881 | 25G06 (NSD25) | Bussmann | India | 25A | 550V | 80kA | Staggered | Each | 20 |
| 646903 | 32G06 (NSD32) | Bussmann | India | 32A | 550V | 80kA | Staggered | Each | 20 |
| H07 Offset Fuselinks | | | | | | | | | |
| 645303 | 2H07 (AA02) | Bussmann | India | 2A | 550V | 80kA | Offset Bolted | Each | 20 |
| 645311 | 4H07 (AA04) | Bussmann | India | 4A | 550V | 80kA | Offset Bolted | Each | 20 |
| 645338 | 6H07 (AA06) | Bussmann | India | 6A | 550V | 80kA | Offset Bolted | Each | 20 |
| 645346 | 10H07 (AA010) | Bussmann | India | 10A | 550V | 80kA | Offset Bolted | Each | 20 |
| 645354 | 16H07 (AA016) | Bussmann | India | 16A | 550V | 80kA | Offset Bolted | Each | 20 |
| 645362 | 20H07 (AA020) | Bussmann | India | 20A | 550V | 80kA | Offset Bolted | Each | 20 |
| 645370 | 25H07 (AA025) | Bussmann | India | 25A | 550V | 80kA | Offset Bolted | Each | 20 |
| 645389 | 32H07 (AA032) | Bussmann | India | 32A | 550V | 80kA | Offset Bolted | Each | 20 |
| NITD Offset Fuselinks | | | | | | | | | |
| 641332 | NITD2 | Bussmann | India | 2A | 550V | 80kA | Offset Slotted | Each | 20 |
| 641340 | NITD4 | Bussmann | India | 4A | 550V | 80kA | Offset Slotted | Each | 20 |
| 641359 | NITD6 | Bussmann | India | 6A | 550V | 80kA | Offset Slotted | Each | 20 |
| 641367 | NITD10 | Bussmann | India | 10A | 550V | 80kA | Offset Slotted | Each | 20 |
| 641375 | NITD16 | Bussmann | India | 16A | 550V | 80kA | Offset Slotted | Each | 20 |
| 641383 | NITD20 | Bussmann | India | 20A | 550V | 80kA | Offset Slotted | Each | 20 |
| 641391 | NITD25 | Bussmann | India | 25A | 550V | 80kA | Offset Slotted | Each | 20 |
| 641405 | NITD32 | Bussmann | India | 32A | 550V | 80kA | Offset Slotted | Each | 20 |



Red Spot Fuseholders now through NZI



Camaster CM63F



Red Spot RS63H

63A FUSEHOLDERS FOR OFFSET TAG FUSELINKS

| Part Number | Description | Brand | Origin | Rating | Voltage | Configuration | Colour | Unit | Weight | Box Qty |
|--|---|----------|--------|---------|---------|----------------------------|--------|------|--------|---------|
| Camaster 63A Cam Action Fuseholders (IEC 60269) | | | | | | | | | | |
| 692034 | Bussmann Camaster CM63F Front Wired | Bussmann | India | 63A | 690V | Front Wired Front Wired | Black | Each | 200g | 5 |
| 692816 | Bussmann Camaster CM63FW Front Wired White | Bussmann | India | 63A | 690V | Back Wired Back Wired | White | Each | 200g | 5 |
| 692123 | Bussmann 63/100BS Back Stud for Camaster 63A | Bussmann | India | 63/100A | 690V | Back Stud Accessory | Black | Each | 60g | 5 |
| Red Spot 63A Fuseholders (IEC 60269) | | | | | | | | | | |
| 692824 | Bussmann Red Spot RS63H Front Wired | Bussmann | UK | 63A | 690V | Front Wired Front Wired | Black | Each | 310g | 10 |
| 692859 | Bussmann Red Spot RS63HWH Front Wired White | Bussmann | UK | 63A | 690V | Front Wired Front Wired | White | Each | 310g | 10 |
| 692832 | Bussmann Red Spot RS63P Back Stud | Bussmann | UK | 63A | 690V | Back Stud Back Stud | Black | Each | 450g | 10 |
| 692867 | Bussmann Red Spot RS63PWH Back Stud White | Bussmann | UK | 63A | 690V | Back Stud Back Stud | White | Each | 450g | 10 |
| 692840 | Bussmann Red Spot RS63PH Front Wired BS | Bussmann | UK | 63A | 690V | Front Wired Back Stud | Black | Each | 380g | 10 |



BS/BE

EB/EE



NZI 63A K07 Fuseholders, made in Temuka



Side View



BE/BE

63A FUSEHOLDERS FOR OFFSET TAG FUSELINKS

| Part Number | Description | Brand | Origin | Amps | Rating | Configuration | Unit | Colour | Weight |
|---|------------------------------|-------|--------|------|--------|-----------------------|------|--------|--------|
| 63A K07 HG Phenolic Fuseholders (AS/NZS 60269) | | | | | | | | | |
| 676004 | NZI K07 63A EE/EE Fuseholder | NZI | NZ | 63A | 500V | End Entry End Entry | Each | Black | 260g |
| 676012 | NZI K07 63A BE/BE Fuseholder | NZI | NZ | 63A | 500V | Back Entry Back Entry | Each | Black | 270g |
| 676020 | NZI K07 63A BE/EE Fuseholder | NZI | NZ | 63A | 500V | Back Entry End Entry | Each | Black | 265g |
| 678023 | NZI K07 63A BS/BE Fuseholder | NZI | NZ | 63A | 500V | Back Stud Back Entry | Each | Black | 320g |
| 678031 | NZI K07 63A BS/EE Fuseholder | NZI | NZ | 63A | 500V | Back Stud End Entry | Each | Black | 320g |
| 678058 | NZI K07 63A BB/EE Fuseholder | NZI | NZ | 63A | 500V | Back Busbar End Entry | Each | Black | 290g |
| 678066 | NZI K07 63A EB/EE Fuseholder | NZI | NZ | 63A | 500V | End Busbar End Entry | Each | Black | 280g |
| 678074 | NZI K07 63A EB/BE Fuseholder | NZI | NZ | 63A | 500V | End Busbar Back Entry | Each | Black | 280g |
| 678007 | NZI K07 63A BS/BS Fuseholder | NZI | NZ | 63A | 500V | Two Back Studs | Each | Black | 380g |



K07



L09



L14

K07, L14 & M14 HRC FUSELINKS (CLASS gG)

| Part Number | Description | Brand | Origin | Amps | Volts | Break | Tags | Unit | Box Qty |
|-----------------------------|------------------|----------|--------|------|-------|-------|--------|------|---------|
| K07 Offset Fuselinks | | | | | | | | | |
| 645664 | 40K07 (BA040) | Bussmann | India | 40A | 550V | 80kA | Offset | Each | 20 |
| 645680 | 50K07 (BA050) | Bussmann | India | 50A | 550V | 80kA | Offset | Each | 20 |
| 645702 | 63K07 (BA063) | Bussmann | India | 63A | 550V | 80kA | Offset | Each | 20 |
| 692336 | 80K07R (OSD80) | Bussmann | India | 80A | 550V | 80kA | Offset | Each | 20 |
| 692344 | 100K07R (OSD100) | Bussmann | India | 100A | 550V | 80kA | Offset | Each | 20 |
| L09 Offset Fuselinks | | | | | | | | | |
| 646458 | 80L09 (CD80) | Bussmann | India | 80A | 550V | 80kA | Offset | Each | 10 |
| 646466 | 100L09 (CD100) | Bussmann | India | 100A | 550V | 80kA | Offset | Each | 10 |
| L14 Offset Fuselinks | | | | | | | | | |
| 646512 | 32L14 (CEO32) | Bussmann | India | 32A | 550V | 80kA | Offset | Each | 10 |
| 646520 | 40L14 (CEO40) | Bussmann | India | 40A | 550V | 80kA | Offset | Each | 10 |
| 646539 | 50L14 (CEO50) | Bussmann | India | 50A | 550V | 80kA | Offset | Each | 10 |
| 646547 | 63L14 (CEO63) | Bussmann | India | 63A | 550V | 80kA | Offset | Each | 10 |
| 646555 | 80L14 (CEO80) | Bussmann | India | 80A | 550V | 80kA | Offset | Each | 10 |
| 646563 | 100L14 (CEO100) | Bussmann | India | 100A | 550V | 80kA | Offset | Each | 10 |



M14



M09



N09



P09

M14, M09, N09 & P09 HRC FUSELINKS (CLASS gG)

| Part Number | Description | Brand | Origin | Amps | Volts | Break | Tags | Unit | Box Qty |
|------------------------------|-----------------|----------|--------|------|-------|-------|---------|------|---------|
| M14 Offset Fuselinks | | | | | | | | | |
| 646636 | 125M14 (DE0125) | Bussmann | India | 125A | 415V | 80kA | Offset | Each | 5 |
| 646652 | 160M14 (DE0160) | Bussmann | India | 160A | 415V | 80kA | Offset | Each | 5 |
| 646660 | 200M14 (DE0200) | Bussmann | India | 200A | 415V | 80kA | Offset | Each | 5 |
| M09 Central Fuselinks | | | | | | | | | |
| 646571 | 125M09 (DD125) | Bussmann | India | 125A | 415V | 80kA | Central | Each | 5 |
| 646601 | 160M09 (DD160) | Bussmann | India | 160A | 415V | 80kA | Central | Each | 5 |
| 646628 | 200M09 (DD200) | Bussmann | India | 200A | 415V | 80kA | Central | Each | 5 |
| N09 Central Fuselinks | | | | | | | | | |
| 646709 | 250N09 (ED250) | Bussmann | India | 250A | 415V | 80kA | Central | Each | 1 |
| 646717 | 315N09 (ED315) | Bussmann | India | 315A | 415V | 80kA | Central | Each | 1 |
| P09 Central Fuselinks | | | | | | | | | |
| 646679 | 355P09 (ED355) | Bussmann | India | 355A | 415V | 80kA | Central | Each | 1 |
| 646687 | 400P09 (ED400) | Bussmann | India | 400A | 415V | 80kA | Central | Each | 1 |



N11



P11



R11

N11, P11 & R11 HRC FUSELINKS (CLASS gG)

| Part Number | Description | Brand | Origin | Amps | Volts | Break | Tags | Unit | Box Qty |
|------------------------------|-----------------|----------|--------|------|-------|-------|----------------|------|---------|
| N11 Central Fuselinks | | | | | | | | | |
| 646768 | 250N11 (EFS250) | Bussmann | India | 250A | 415V | 80kA | Central | Each | 1 |
| 646776 | 315N11 (EFS315) | Bussmann | India | 315A | 415V | 80kA | 4-Hole Central | Each | 1 |
| P11 Central Fuselinks | | | | | | | | | |
| 647942 | 355P11 (EF355) | Bussmann | India | 355A | 415V | 80kA | 4-Hole Central | Each | 1 |
| 646644 | 400P11 (EF400) | Bussmann | India | 400A | 415V | 80kA | 4-Hole Central | Each | 1 |
| R11 Central Fuselinks | | | | | | | | | |
| 646946 | 450R11 (FF450) | Bussmann | India | 450A | 690V | 80kA | 4-Hole Central | Each | 1 |
| 646954 | 500R11 (FF500) | Bussmann | India | 500A | 690V | 80kA | 4-Hole Central | Each | 1 |
| 646962 | 560R11 (FF560) | Bussmann | India | 560A | 690V | 80kA | 4-Hole Central | Each | 1 |
| 646970 | 630R11 (FF630) | Bussmann | India | 630A | 690V | 80kA | 4-Hole Central | Each | 1 |



100+A FUSEHOLDERS FOR OFFSET & CENTRAL TAG FUSELINKS

| Part Number | Description | Brand | Origin | Rating | Voltage | Configuration | Colour | Unit | Weight | Box Qty |
|---|---|----------|--------|---------|---------|----------------------------|--------|------|--------|---------|
| NZI 100A L14 Fuseholder (BS88 Part2 1975) | | | | | | | | | | |
| 678678 | NZI L14 100A EE/EE Fuseholder | NZI | NZ | 100A | 500V | End Entry End Entry | Black | Each | 870g | 5 |
| Camaster 100A Cam Action Fuseholders (IEC 60269) | | | | | | | | | | |
| 692042 | Bussmann Camaster CM100F Front Wired | Bussmann | India | 100A | 690V | Front Wired Front Wired | Black | Each | 210g | 5 |
| 692123 | Bussmann 63/100BS Back Stud for Camaster 63A | Bussmann | India | 63/100A | 690V | Back Stud Accessory | Black | Each | 60g | 5 |
| Red Spot 100A Fuseholders (IEC 60269) | | | | | | | | | | |
| 692905 | Bussmann Red Spot RS100H Front Wired 100A | Bussmann | UK | 100A | 690V | Front Wired Front Wired | Black | Each | 850g | 5 |
| 692875 | Bussmann Red Spot RS100BW Back Wired 100A | Bussmann | UK | 100A | 690V | Back Wired Back Wired | Black | Each | 795g | 5 |
| 692913 | Bussmann Red Spot RS100P Back Stud 100A | Bussmann | UK | 100A | 690V | Back Stud Back Stud | Black | Each | | 5 |
| 692921 | Bussmann Red Spot RS100PH Front Wired BS 100A | Bussmann | UK | 100A | 690V | Front Wired Back Stud | Black | Each | 915g | 5 |
| Red Spot 200A Fuseholders (IEC 60269) | | | | | | | | | | |
| 692948 | Bussmann Red Spot RS200H Front Wired 200A | Bussmann | UK | 200A | 690V | Front Wired Front Wired | Black | Each | 2.1kg | 1 |
| Red Spot 400A Fuseholders (IEC 60269) | | | | | | | | | | |
| 692956 | Bussmann Red Spot RS400H Front Wired 400A | Bussmann | UK | 400A | 690V | Front Wired Front Wired | Black | Each | | 1 |



G06 Motor Circuit



H07 Motor Circuit



K07 Motor Circuit



P11 Motor Circuit

MOTOR RATED HRC FUSELINKS (CLASS gG)

| Part Number | Description | Brand | Origin | Amps | Volts | Break | Tags | Unit | Box Qty |
|----------------------------------|-----------------------------|----------|--------|---------|-------|-------|-----------|------|---------|
| G06 Motor Circuit Fuses | | | | | | | | | |
| 649201 | 20M25 G06 MC (NSD20M25) | Bussmann | India | 20M25 | 550V | 80kA | Staggered | Each | 20 |
| 649228 | 20M32 G06 MC (NSD20M32) | Bussmann | India | 20M32 | 550V | 80kA | Staggered | Each | 20 |
| 649236 | 32M40 G06 MC (NSD32M40) | Bussmann | India | 32M40 | 550V | 80kA | Staggered | Each | 20 |
| H07 Motor Circuit Fuses | | | | | | | | | |
| 649368 | 32M40 H07 MC (AAO32M40) | Bussmann | India | 32M40 | 550V | 80kA | Offset | Each | 20 |
| 649384 | 32M50 H07 MC (AAO32M50) | Bussmann | India | 32M50 | 550V | 80kA | Offset | Each | 20 |
| 649392 | 32M63 H07 MC (AAO32M63) | Bussmann | India | 32M63 | 550V | 80kA | Offset | Each | 20 |
| K07 Motor Circuit Fuses | | | | | | | | | |
| 649457 | 63M80 K07 MC (BAO63M80) | Bussmann | India | 63M80 | 550V | 80kA | Offset | Each | 20 |
| 649465 | 63M100 K07 MC (BAO63M100) | Bussmann | India | 63M100 | 550V | 80kA | Offset | Each | 20 |
| Other Motor Circuit Fuses | | | | | | | | | |
| 649651 | 100M125 L09 MC (CD100M125) | Bussmann | India | 100M125 | 415V | 80kA | Central | Each | 10 |
| 649597 | 100M125 L14 MC (CEO100M125) | Bussmann | India | 100M125 | 415V | 80kA | Offset | Each | 10 |
| 649678 | 100M160 L09 MC (CD100M160) | Bussmann | India | 100M160 | 415V | 80kA | Central | Each | 10 |
| 649619 | 100M160 L14 MC (CEO100M160) | Bussmann | India | 100M160 | 415V | 80kA | Offset | Each | 10 |
| 649627 | 100M200 L14 MC (CEO100M200) | Bussmann | India | 100M200 | 415V | 80kA | Offset | Each | 10 |
| 649694 | 200M250 M09 MC (DD200M250) | Bussmann | India | 200M250 | 415V | 80kA | Central | Each | 5 |
| 649643 | 200M250 M14 MC (DEO200M250) | Bussmann | India | 200M250 | 415V | 80kA | Offset | Each | 5 |
| 649724 | 315M400 N09 MC (EP315M400) | Bussmann | India | 315M400 | 415V | 80kA | Central | Each | 1 |
| 646695 | 400M500 P09 MC (ED400M500) | Bussmann | India | 400M500 | 415V | 80kA | Central | Each | 1 |
| 647950 | 400M500 P11 MC (EF400M500) | Bussmann | India | 400M500 | 550V | 80kA | Central | Each | 1 |



60KR85

KR85 HOUSE SERVICE HRC FUSELINKS (CLASS gG TO BS1361)

| Part Number | Description | Brand | Origin | Amps | Volts | Break | Configuration | Unit | Box Qty |
|---------------------------------|----------------|----------|--------|------|-------|-------|-----------------|------|---------|
| KR85 House Service Fuses | | | | | | | | | |
| 647802 | 5A (5KR85) | Bussmann | India | 5A | 415V | 33kA | 22x57mm Ferrule | Each | 20 |
| 647810 | 10A (10KR85) | Bussmann | India | 10A | 415V | 33kA | 22x57mm Ferrule | Each | 20 |
| 647829 | 15A (15KR85) | Bussmann | India | 15A | 415V | 33kA | 22x57mm Ferrule | Each | 20 |
| 647837 | 20A (20KR85) | Bussmann | India | 20A | 415V | 33kA | 22x57mm Ferrule | Each | 20 |
| 647845 | 25A (25KR85) | Bussmann | India | 25A | 415V | 33kA | 22x57mm Ferrule | Each | 20 |
| 647853 | 30A (30KR85) | Bussmann | India | 30A | 415V | 33kA | 22x57mm Ferrule | Each | 20 |
| 647861 | 40A (40KR85) | Bussmann | India | 40A | 415V | 33kA | 22x57mm Ferrule | Each | 20 |
| 647888 | 45A (45KR85) | Bussmann | India | 45A | 415V | 33kA | 22x57mm Ferrule | Each | 20 |
| 647896 | 50A (50KR85) | Bussmann | India | 50A | 415V | 33kA | 22x57mm Ferrule | Each | 20 |
| 647918 | 60A (60KR85) | Bussmann | India | 60A | 415V | 33kA | 22x57mm Ferrule | Each | 20 |
| 647926 | 80A (80KR85) | Bussmann | India | 80A | 415V | 33kA | 22x57mm Ferrule | Each | 20 |
| 647934 | 100A (100KR85) | Bussmann | India | 100A | 415V | 33kA | 22x57mm Ferrule | Each | 20 |



NH00 Base



NH1 Base



NH2 Base



NH1 3P3P



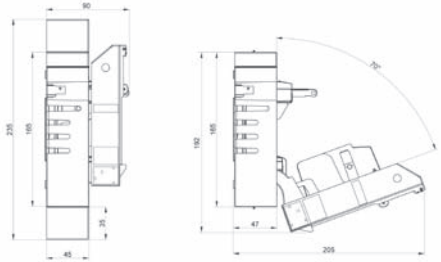
NH2 3P3P

EFEN DIN FUSE DISCONNECTS (TO IEC 947-3)

| Part Number | Description | Brand | Origin | Efen Code | Amps | Poles | Phase | Unit | Weight | Box Qty |
|--|--------------------------|-------|---------|------------|------|-------|--------|------|--------|---------|
| Base Only | | | | | | | | | | |
| 531049 | Efen NH00 160A Base Only | Efen | Germany | 33000-0050 | 160A | | | Each | 80g | 3 |
| 530735 | Efen NH1 250A Base Only | Efen | Germany | 33027-0010 | 250A | | | Each | 240g | 3 |
| 531006 | Efen NH2 400A Base Only | Efen | Germany | 33032-0010 | 400A | | | Each | 400g | 3 |
| 1 Pole (Single Phase) | | | | | | | | | | |
| 531022 | Efen NH00 160A Switch | Efen | Germany | 33107-0010 | 160A | 1 | Single | Each | 360g | 1 |
| 531030 | Efen NH1 250A Switch | Efen | Germany | 33095-0010 | 250A | 1 | Single | Each | 2.1kg | 1 |
| 530964 | Efen NH2 400A Switch | Efen | Germany | 33096-0010 | 400A | 1 | Single | Each | 2.1kg | 1 |
| 530972 | Efen NH3 630A Switch | Efen | Germany | 33097-0010 | 630A | 1 | Single | Each | 2.3kg | 1 |
| Horizontal 3 Pole (Three Phase) | | | | | | | | | | |
| 530859 | Efen NH00 100A Switch | Efen | Germany | 34050-0000 | 100A | 3 | Three | Each | 500g | 1 |
| 530409 | Efen NH00 160A Switch | Efen | Germany | 34060-0000 | 160A | 3 | Three | Each | 600g | 1 |
| 531928 | Efen NH1 250A Switch | Efen | Germany | 34162-0000 | 250A | 3 | Three | Each | 2.1kg | 1 |
| 530743 | Efen NH2 400A Switch | Efen | Germany | 34262-0000 | 400A | 3 | Three | Each | 3.0kg | 1 |
| 530727 | Efen NH3 630A Switch | Efen | Germany | 34362-0000 | 630A | 3 | Three | Each | 4.0kg | 1 |



NH00 3P3P



NH00 3P3P Dimensions

BUSSMANN DIN FUSE DISCONNECTS

| Part Number | Description | Brand | Origin | CB Code | Amps | Poles | Phase | Standard | Unit | Box Qty |
|--|---------------------|----------|--------|------------|------|-------|--------|-------------|------|---------|
| Base Only | | | | | | | | | | |
| 697001 | NH00 160A Base Only | Bussmann | Czech | SD00-D | 160A | 1 | Single | IEC 60269 | Each | 3 |
| 697028 | NH1 250A Base Only | Bussmann | Czech | SD1-D | 250A | 1 | Single | IEC 60269 | Each | 3 |
| 697036 | NH2 400A Base Only | Bussmann | Czech | SD2-D | 400A | 1 | Single | IEC 60269 | Each | 3 |
| 1 Pole (Single Phase) | | | | | | | | | | |
| 697044 | NH00 160A Switch | Bussmann | Czech | BFH00-1A/F | 160A | 1 | Single | IEC 60947-1 | Each | 1 |
| 697052 | NH1 250A Switch | Bussmann | Czech | BFH1-1A/F | 250A | 1 | Single | IEC 60947-1 | Each | 1 |
| 697060 | NH2 400A Switch | Bussmann | Czech | BFH2-1A/F | 400A | 1 | Single | IEC 60947-1 | Each | 1 |
| Horizontal 3 Pole (Three Phase) | | | | | | | | | | |
| 697079 | NH00 160A Switch | Bussmann | Czech | BFH00-3A/F | 160A | 3 | Three | IEC 60947-1 | Each | 1 |
| 697087 | NH1 250A Switch | Bussmann | Czech | BFH1-3A/F | 250A | 3 | Three | IEC 60947-1 | Each | 1 |
| 697095 | NH2 400A Switch | Bussmann | Czech | BFH2-3A/F | 400A | 3 | Three | IEC 60947-1 | Each | 1 |
| 697109 | NH3 630A Switch | Bussmann | Czech | BFH3-3A/F | 630A | 3 | Three | IEC 60947-1 | Each | 1 |



Solid Link Blade



NH000

DIN SOLID LINK & NH000 HRC FUSES (CLASS gG)

| Part Number | Description | Brand | Origin | Amps | Volts | Break | Configuration | Unit | Box Qty |
|----------------------------|---------------------------|----------|--------|------|-------|-------|---------------|------|---------|
| Solid Link Blades | | | | | | | | | |
| 688983 | 160A Solid Link 00 (SL00) | Bussmann | India | 160A | 500V | 120kA | Solid Link | Each | 3 |
| 657115 | 250A Solid Link 1 (SL1) | Bussmann | India | 250A | 500V | 120kA | Solid Link | Each | 3 |
| 689300 | 400A Solid Link 2 (SL2) | Bussmann | India | 400A | 500V | 120kA | Solid Link | Each | 3 |
| 657131 | 630A Solid Link 3 (SL3) | Bussmann | India | 630A | 500V | 120kA | Solid Link | Each | 3 |
| NH000 DIN Fuselinks | | | | | | | | | |
| 688584 | 10A NH000 (10NHG000B) | Bussmann | India | 10A | 500V | 120kA | DIN Blade | Each | 3 |
| 690317 | 16A NH000 (16NHG000B) | Bussmann | India | 16A | 500V | 120kA | DIN Blade | Each | 3 |
| 689130 | 20A NH000 (20NHG000B) | Bussmann | India | 20A | 500V | 120kA | DIN Blade | Each | 3 |
| 689149 | 32A NH000 (32NHG000B) | Bussmann | India | 32A | 500V | 120kA | DIN Blade | Each | 3 |
| 689238 | 40A NH000 (40NHG000B) | Bussmann | India | 40A | 500V | 120kA | DIN Blade | Each | 3 |
| 689165 | 50A NH000 (50NHG000B) | Bussmann | India | 50A | 500V | 120kA | DIN Blade | Each | 3 |
| 689173 | 63A NH000 (63NHG000B) | Bussmann | India | 63A | 500V | 120kA | DIN Blade | Each | 3 |
| 689181 | 80A NH000 (80NHG000B) | Bussmann | India | 80A | 500V | 120kA | DIN Blade | Each | 3 |
| 689203 | 100A NH000 (100NHG000B) | Bussmann | India | 100A | 500V | 120kA | DIN Blade | Each | 3 |



NH00



NHO

DIN NH00 & NHO HRC FUSES (CLASS gG)

| Part Number | Description | Brand | Origin | Amps | Volts | Break | Configuration | Unit | Box Qty |
|---------------------------|-----------------------|----------|--------|------|-------|-------|---------------|------|---------|
| NH00 DIN Fuselinks | | | | | | | | | |
| 689211 | 125A NH00 (125NHG00B) | Bussmann | India | 125A | 500V | 120kA | DIN Blade | Each | 3 |
| 689491 | 160A NH00 (160NHG00B) | Bussmann | India | 160A | 500V | 120kA | DIN Blade | Each | 3 |
| NHO DIN Fuselinks | | | | | | | | | |
| 665290 | 10A NHO (16NHG00B) | Bussmann | India | 10A | 500V | 120kA | Blade Type | Each | 3 |
| 689378 | 16A NHO (16NHG00B) | Bussmann | India | 16A | 500V | 120kA | Blade Type | Each | 3 |
| 689831 | 20A NHO (20NHG00B) | Bussmann | India | 20A | 500V | 120kA | Blade Type | Each | 3 |
| 688576 | 25A NHO (25NHG00B) | Bussmann | India | 25A | 500V | 120kA | Blade Type | Each | 3 |
| 693162 | 32A NHO (32NHG00B) | Bussmann | India | 32A | 500V | 120kA | Blade Type | Each | 3 |
| 689963 | 40A NHO (40NHG00B) | Bussmann | India | 40A | 500V | 120kA | Blade Type | Each | 3 |
| 689858 | 50A NHO (50NHG00B) | Bussmann | India | 50A | 500V | 120kA | Blade Type | Each | 3 |
| 689319 | 63A NHO (63NHG00B) | Bussmann | India | 63A | 500V | 120kA | Blade Type | Each | 3 |
| 689327 | 80A NHO (80NHG00B) | Bussmann | India | 80A | 500V | 120kA | Blade Type | Each | 3 |
| 689335 | 100A NHO (100NHG00B) | Bussmann | India | 100A | 500V | 120kA | Blade Type | Each | 3 |
| 689343 | 125A NHO (125NHG00B) | Bussmann | India | 125A | 500V | 120kA | Blade Type | Each | 3 |
| 689351 | 160A NHO (160NHG00B) | Bussmann | India | 160A | 500V | 120kA | Blade Type | Each | 3 |



NH1



Top



Side

DIN NH1 HRC FUSES (CLASS gG)

| Part Number | Description | Brand | Origin | Amps | Volts | Break | Configuration | Unit | Box Qty |
|--------------------------|----------------------|----------|--------|------|-------|-------|---------------|------|---------|
| NH1 DIN Fuselinks | | | | | | | | | |
| 689866 | 16A NH1 (16NHG01B) | Bussmann | India | 16A | 500V | 120kA | Blade Type | Each | 3 |
| 689688 | 20A NH1 (20NHG01B) | Bussmann | India | 20A | 500V | 120kA | Blade Type | Each | 3 |
| 689432 | 25A NH1 (25NHG01B) | Bussmann | India | 25A | 500V | 120kA | Blade Type | Each | 3 |
| 692530 | 32A NH1 (32NHG01B) | Bussmann | India | 32A | 500V | 120kA | Blade Type | Each | 3 |
| 686700 | 40A NH1 (40NHG01B) | Bussmann | India | 40A | 500V | 120kA | Blade Type | Each | 3 |
| 689416 | 50A NH1 (50NHG01B) | Bussmann | India | 50A | 500V | 120kA | Blade Type | Each | 3 |
| 689424 | 63A NH1 (63NHG01B) | Bussmann | India | 63A | 500V | 120kA | Blade Type | Each | 3 |
| 689084 | 80A NH1 (80NHG01B) | Bussmann | India | 80A | 500V | 120kA | Blade Type | Each | 3 |
| 689440 | 100A NH1 (100NHG01B) | Bussmann | India | 100A | 500V | 120kA | Blade Type | Each | 3 |
| 689459 | 125A NH1 (125NHG01B) | Bussmann | India | 125A | 500V | 120kA | Blade Type | Each | 3 |
| 689467 | 160A NH1 (160NHG01B) | Bussmann | India | 160A | 500V | 120kA | Blade Type | Each | 3 |
| 689475 | 200A NH1 (200NHG1B) | Bussmann | India | 200A | 500V | 120kA | Blade Type | Each | 3 |
| 661066 | 224A NH1 (224NHG1B) | Bussmann | India | 224A | 500V | 120kA | Blade Type | Each | 3 |
| 689939 | 250A NH1 (250NHG1B) | Bussmann | India | 250A | 500V | 120kA | Blade Type | Each | 3 |



NH2



NH3

DIN NH2 & NH3 HRC FUSES (CLASS gG)

| Part Number | Description | Brand | Origin | Amps | Volts | Break | Configuration | Unit | Box Qty |
|--------------------------|----------------------|----------|--------|------|-------|-------|---------------|------|---------|
| NH2 DIN Fuselinks | | | | | | | | | |
| 686735 | 50A NH2 (50NHG02B) | Bussmann | India | 50A | 500V | 120kA | Blade Type | Each | 3 |
| 689548 | 63A NH2 (63NHG02B) | Bussmann | India | 63A | 500V | 120kA | Blade Type | Each | 3 |
| 689998 | 80A NH2 (80NHG02B) | Bussmann | India | 80A | 500V | 120kA | Blade Type | Each | 3 |
| 689882 | 100A NH2 (100NHG02B) | Bussmann | India | 100A | 500V | 120kA | Blade Type | Each | 3 |
| 689564 | 125A NH2 (125NHG02B) | Bussmann | India | 125A | 500V | 120kA | Blade Type | Each | 3 |
| 689572 | 160A NH2 (160NHG02B) | Bussmann | India | 160A | 500V | 120kA | Blade Type | Each | 3 |
| 689580 | 200A NH2 (200NHG02B) | Bussmann | India | 200A | 500V | 120kA | Blade Type | Each | 3 |
| 685860 | 224A NH2 (224NHG02B) | Bussmann | India | 224A | 500V | 120kA | Blade Type | Each | 3 |
| 689890 | 250A NH2 (250NHG02B) | Bussmann | India | 250A | 500V | 120kA | Blade Type | Each | 3 |
| 689610 | 315A NH2 (315NHG2B) | Bussmann | India | 315A | 500V | 120kA | Blade Type | Each | 3 |
| 689629 | 355A NH2 (355NHG2B) | Bussmann | India | 355A | 500V | 120kA | Blade Type | Each | 3 |
| 689637 | 400A NH2 (400NHG2B) | Bussmann | India | 400A | 500V | 120kA | Blade Type | Each | 3 |
| NH3 DIN Fuselinks | | | | | | | | | |
| 689645 | 315A NH3 (315NHG03B) | Bussmann | India | 315A | 500V | 120kA | Blade Type | Each | 3 |
| 689556 | 355A NH3 (355NHG03B) | Bussmann | India | 355A | 500V | 120kA | Blade Type | Each | 3 |
| 689599 | 400A NH3 (400NHG03B) | Bussmann | India | 400A | 500V | 120kA | Blade Type | Each | 3 |
| 689696 | 500A NH3 (500NHG3B) | Bussmann | India | 500A | 500V | 120kA | Blade Type | Each | 3 |
| 689718 | 630A NH3 (630NHG3B) | Bussmann | India | 630A | 500V | 120kA | Blade Type | Each | 3 |



300-1



160MJ29

76mm J-TYPE FUSELINKS & CARRIERS

| Part Number | Description | Brand | Origin | Amps | Volts | Fixing Centre | Standard | Unit | Box Qty |
|------------------------------|-----------------------|----------|--------|------|-------|---------------|-------------|------|---------|
| 76mm J-Type Fuselinks | | | | | | | | | |
| 647233 | 63A 76mm (63MJ29-6) | Bussmann | India | 63A | 415V | 76mm | IEC 60269-1 | Each | 5 |
| 647268 | 100A 76mm (100MJ29-6) | Bussmann | India | 100A | 415V | 76mm | IEC 60269-1 | Each | 5 |
| 647276 | 125A 76mm (125MJ29-6) | Bussmann | India | 125A | 415V | 76mm | IEC 60269-1 | Each | 5 |
| 647284 | 160A 76mm (160MJ29-6) | Bussmann | India | 160A | 415V | 76mm | IEC 60269-1 | Each | 5 |
| 647292 | 200A 76mm (200MJ29-6) | Bussmann | India | 200A | 415V | 76mm | IEC 60269-1 | Each | 5 |
| 647306 | 250A 76mm (250MJ29-6) | Bussmann | India | 250A | 415V | 76mm | IEC 60269-1 | Each | 5 |

| Part Number | Description | Brand | Origin | Amps | Colour | Construction | Standard | Unit | Weight | Box Qty |
|--------------------------------------|----------------------------|-------|--------|------|--------|--------------------|-------------|------|--------|---------|
| Carrier for J-Type 76mm Fuses | | | | | | | | | | |
| 468622 | NZI 300-1 Shrouded Carrier | NZI | NZ | 200A | White | Porcelain & ETPNFM | AS/NZS 3947 | Each | 600g | 1 |
| 470732 | NZI 300-8 Base Only | NZI | NZ | 200A | | Formica & ETPNFM | AS/NZS 3947 | Each | 700g | 1 |



82mm J-TYPE FUSELINKS & CARRIERS

| Part Number | Description | Brand | Origin | Amps | Volts | Fixing Centre | Standard | Unit | Box Qty |
|------------------------------|-----------------------|----------|--------|------|-------|---------------|-------------|------|---------|
| 82mm J-Type Fuselinks | | | | | | | | | |
| 647373 | 32A 82mm (32MJ30-8) | Bussmann | India | 32A | 415V | 82mm | IEC 60269-1 | Each | 5 |
| 647381 | 40A 82mm (40MJ30-8) | Bussmann | India | 40A | 415V | 82mm | IEC 60269-1 | Each | 5 |
| 647403 | 63A 82mm (63MJ30-8) | Bussmann | India | 63A | 415V | 82mm | IEC 60269-1 | Each | 5 |
| 647411 | 80A 82mm (80MJ30-7) | Bussmann | India | 80A | 415V | 82mm | IEC 60269-1 | Each | 5 |
| 647438 | 100A 82mm (100MJ30-7) | Bussmann | India | 100A | 415V | 82mm | IEC 60269-1 | Each | 5 |
| 647446 | 125A 82mm (125MJ30-7) | Bussmann | India | 125A | 415V | 82mm | IEC 60269-1 | Each | 5 |
| 647454 | 160A 82mm (160MJ30-7) | Bussmann | India | 160A | 415V | 82mm | IEC 60269-1 | Each | 5 |
| 647462 | 200A 82mm (200MJ30-7) | Bussmann | India | 200A | 415V | 82mm | IEC 60269-1 | Each | 5 |
| 647470 | 250A 82mm (250MJ30-7) | Bussmann | India | 250A | 415V | 82mm | IEC 60269-1 | Each | 5 |
| 647489 | 315A 82mm (315MJ30-7) | Bussmann | India | 315A | 415V | 82mm | IEC 60269-1 | Each | 5 |
| 647659 | 355A 82mm (355PJ30-7) | Bussmann | India | 355A | 415V | 82mm | IEC 60269-1 | Each | 5 |
| 647667 | 400A 82mm (400PJ30-7) | Bussmann | India | 400A | 415V | 82mm | IEC 60269-1 | Each | 5 |

| Part Number | Description | Brand | Origin | Amps | Colour | Construction | Standard | Unit | Weight | Box Qty |
|--------------------------------------|----------------------------------|-------|--------|------|--------|--------------------|-------------|------|--------|---------|
| Carrier for J-Type 82mm Fuses | | | | | | | | | | |
| 468614 | NZI 325-7 Shrouded Carrier | NZI | NZ | 400A | White | Porcelain & ETPNFM | AS/NZS 3947 | Each | 1.1kg | 1 |
| 469726 | NZI 325 Slotted Shorting Link | NZI | NZ | 400A | | Copper ETP | AS/NZS 3947 | Each | 110g | 1 |
| 469858 | NZI 325-8 Base Only | NZI | NZ | 400A | | Formica & ETPNFM | AS/NZS 3947 | Each | 1.2kg | 1 |
| 468657 | NZI 3.25" Outdoor Wedge Complete | NZI | NZ | 400A | Grey | Porcelain & ETPNFM | AS/NZS 3947 | Each | 5.1kg | 1 |



315MJ31-7

3625-7



3625-7 Top View



92mm J-TYPE FUSELINKS & CARRIERS

| Part Number | Description | Brand | Origin | Amps | Volts | Fixing Centre | Standard | Unit | Box Qty | |
|--------------------------------------|-----------------------------|----------|--------|------|--------|--------------------|-------------|------|---------|---------|
| 92mm J-Type Fuselinks | | | | | | | | | | |
| 658650 | 32A 92mm (32MJ31-8) | Bussmann | India | 32A | 415V | 92mm | IEC 60269-1 | Each | 5 | |
| 647535 | 40A 92mm (40MJ31-8) | Bussmann | India | 40A | 415V | 92mm | IEC 60269-1 | Each | 5 | |
| 647543 | 63A 92mm (63MJ31-8) | Bussmann | India | 63A | 415V | 92mm | IEC 60269-1 | Each | 5 | |
| 647551 | 80A 92mm (80MJ31-7) | Bussmann | India | 80A | 415V | 92mm | IEC 60269-1 | Each | 5 | |
| 647578 | 100A 92mm (100MJ31-7) | Bussmann | India | 100A | 415V | 92mm | IEC 60269-1 | Each | 5 | |
| 647586 | 125A 92mm (125MJ31-7) | Bussmann | India | 125A | 415V | 92mm | IEC 60269-1 | Each | 5 | |
| 647594 | 160A 92mm (160MJ31-7) | Bussmann | India | 160A | 415V | 92mm | IEC 60269-1 | Each | 5 | |
| 647608 | 200A 92mm (200MJ31-7) | Bussmann | India | 200A | 415V | 92mm | IEC 60269-1 | Each | 5 | |
| 647616 | 250A 92mm (250MJ31-7) | Bussmann | India | 250A | 415V | 92mm | IEC 60269-1 | Each | 5 | |
| 647624 | 315A 92mm (315MJ31-7) | Bussmann | India | 315A | 415V | 92mm | IEC 60269-1 | Each | 5 | |
| 647675 | 355A 92mm (355PJ31-7) | Bussmann | India | 355A | 415V | 92mm | IEC 60269-1 | Each | 5 | |
| 647683 | 400A 92mm (400PJ31-7) | Bussmann | India | 400A | 415V | 92mm | IEC 60269-1 | Each | 5 | |
| 658782 | 450A 92mm (450RJ31-7) | Bussmann | India | 450A | 415V | 92mm | IEC 60269-1 | Each | 5 | |
| 647756 | 500A 92mm (500RJ31-7) | Bussmann | India | 500A | 415V | 92mm | IEC 60269-1 | Each | 5 | |
| 658804 | 560A 92mm (560SJ31-6) | Bussmann | India | 560A | 415V | 92mm | IEC 60269-1 | Each | 5 | |
| 647772 | 630A 92mm (630SJ31-6) | Bussmann | India | 630A | 415V | 92mm | IEC 60269-1 | Each | 5 | |
| Part Number | Description | Brand | Origin | Amps | Colour | Construction | Standard | Unit | Weight | Box Qty |
| Carrier for J-Type 92mm Fuses | | | | | | | | | | |
| 471011 | NZI 3625-7 Shrouded Carrier | NZI | NZ | 600A | White | Porcelain & ETPNFM | AS/NZS 3947 | Each | 1.5kg | 1 |



C10G32 10x38

CYLINDRICAL 10x38 FUSELINKS (CLASS gG)

| Part Number | Description | Brand | Origin | Amps | Volts | Break | Configuration | Unit | Box Qty |
|---|-------------------------|----------|--------|------|-------|-------|------------------|------|---------|
| 10x38 HRC Fuselinks | | | | | | | | | |
| 654574 | 1A 10x38 Fuse (C10G1) | Bussmann | India | 1A | 500V | 120kA | 10x38mm Cylinder | Each | 10 |
| 654299 | 2A 10x38 Fuse (C10G2) | Bussmann | India | 2A | 500V | 120kA | 10x38mm Cylinder | Each | 10 |
| 654388 | 4A 10x38 Fuse (C10G4) | Bussmann | India | 4A | 500V | 120kA | 10x38mm Cylinder | Each | 10 |
| 654302 | 6A 10x38 Fuse (C10G6) | Bussmann | India | 6A | 500V | 120kA | 10x38mm Cylinder | Each | 10 |
| 654310 | 10A 10x38 Fuse (C10G10) | Bussmann | India | 10A | 500V | 120kA | 10x38mm Cylinder | Each | 10 |
| 654329 | 16A 10x38 Fuse (C10G16) | Bussmann | India | 16A | 500V | 120kA | 10x38mm Cylinder | Each | 10 |
| 654337 | 20A 10x38 Fuse (C10G20) | Bussmann | India | 20A | 500V | 120kA | 10x38mm Cylinder | Each | 10 |
| 654353 | 25A 10x38 Fuse (C10G25) | Bussmann | India | 25A | 500V | 120kA | 10x38mm Cylinder | Each | 10 |
| 654345 | 32A 10x38 Fuse (C10G32) | Bussmann | India | 32A | 500V | 120kA | 10x38mm Cylinder | Each | 10 |
| Fuseholder for 10x38 Fuses (IEC 60269/60947) | | | | | | | | | |
| 666858 | CHM1D Fuseholder | Bussmann | China | 32A | 690V | 120kA | 10x38mm Cylinder | Each | 12 |

BUSSMANN LCT/LET/LMT High Speed Fuses



BS88 'T' TYPE HIGH-SPEED 240V SEMI-CONDUCTOR HRC FUSELINKS

| Part Number | Description | Brand | Origin | Amps | Volts AC | Volts DC | Fixing Centre | A2T | Unit | Box Qty |
|----------------------------------|-------------|----------|--------|------|----------|----------|---------------|--------|------|---------|
| 240V LCT High Speed Fuses | | | | | | | | | | |
| 684848 | 6LCT | Bussmann | India | 6A | 240V | 150V | 38mm | 9 | Each | 20 |
| 684856 | 10LCT | Bussmann | India | 10A | 240V | 150V | 38mm | 22 | Each | 20 |
| 684880 | 12LCT | Bussmann | India | 12A | 240V | 150V | 38mm | 32 | Each | 20 |
| 684864 | 16LCT | Bussmann | India | 16A | 240V | 150V | 38mm | 100 | Each | 20 |
| 684872 | 20LCT | Bussmann | India | 20A | 240V | 150V | 38mm | 160 | Each | 20 |
| 240V LET High Speed Fuses | | | | | | | | | | |
| 685003 | 25LET | Bussmann | India | 25A | 240V | 150V | 42mm | 250 | Each | 10 |
| 685011 | 32LET | Bussmann | India | 32A | 240V | 150V | 42mm | 450 | Each | 10 |
| 685038 | 35LET | Bussmann | India | 35A | 240V | 150V | 42mm | 600 | Each | 10 |
| 684937 | 50LET | Bussmann | India | 50A | 240V | 150V | 42mm | 1400 | Each | 10 |
| 685046 | 63LET | Bussmann | India | 63A | 240V | 150V | 42mm | 2200 | Each | 10 |
| 685054 | 80LET | Bussmann | India | 80A | 240V | 150V | 42mm | 3800 | Each | 10 |
| 685062 | 100LET | Bussmann | India | 100A | 240V | 150V | 42mm | 7500 | Each | 10 |
| 685070 | 125LET | Bussmann | India | 125A | 240V | 150V | 42mm | 7500 | Each | 10 |
| 685089 | 160LET | Bussmann | India | 160A | 240V | 150V | 42mm | 16000 | Each | 10 |
| 685097 | 180LET | Bussmann | India | 180A | 240V | 150V | 42mm | 29000 | Each | 10 |
| 240V LMT High Speed Fuses | | | | | | | | | | |
| 685275 | 160LMT | Bussmann | India | 160A | 240V | 150V | 59mm | 16000 | Each | 1 |
| 685283 | 200LMT | Bussmann | India | 200A | 240V | 150V | 59mm | 20000 | Each | 1 |
| 685291 | 250LMT | Bussmann | India | 250A | 240V | 150V | 59mm | 40000 | Each | 1 |
| 685305 | 315LMT | Bussmann | India | 315A | 240V | 150V | 59mm | 75000 | Each | 1 |
| 685313 | 355LMT | Bussmann | India | 355A | 240V | 150V | 59mm | 100000 | Each | 1 |
| 685321 | 400LMT | Bussmann | India | 400A | 240V | 150V | 59mm | 160000 | Each | 1 |
| 685348 | 450LMT | Bussmann | India | 450A | 240V | 150V | 59mm | 220000 | Each | 1 |



BS88 'T' TYPE HIGH-SPEED 690V SEMI-CONDUCTOR HRC FUSELINKS

| Part Number | Description | Brand | Origin | Amps | Volts AC | Volts DC | Fixing Centre | A2T | Unit | Box Qty |
|----------------------------------|-------------|---------|--------|------|----------|----------|---------------|-------|------|---------|
| 690V CT High Speed Fuses | | | | | | | | | | |
| 690686 | 6CT | Busmann | India | 6A | 690V | 500V | 64mm | 12 | Each | 20 |
| 690694 | 10CT | Busmann | India | 10A | 690V | 500V | 64mm | 48 | Each | 20 |
| 690708 | 12CT | Busmann | India | 12A | 690V | 500V | 64mm | 65 | Each | 20 |
| 690716 | 16CT | Busmann | India | 16A | 690V | 500V | 64mm | 110 | Each | 20 |
| 690724 | 20CT | Busmann | India | 20A | 690V | 500V | 64mm | 220 | Each | 20 |
| 690V FE High Speed Fuses | | | | | | | | | | |
| 690791 | 35FE | Busmann | India | 35A | 690V | 500V | 64mm | 200 | Each | 20 |
| 690805 | 40FE | Busmann | India | 40A | 690V | 500V | 64mm | 200 | Each | 20 |
| 690813 | 45FE | Busmann | India | 45A | 690V | 500V | 64mm | 200 | Each | 20 |
| 690821 | 50FE | Busmann | India | 50A | 690V | 500V | 64mm | 200 | Each | 20 |
| 690848 | 63FE | Busmann | India | 63A | 690V | 500V | 64mm | 200 | Each | 20 |
| 690V FEE High Speed Fuses | | | | | | | | | | |
| 690899 | 100FEE | Busmann | India | 100A | 690V | 500V | 70mm | 2400 | Each | 5 |
| 690902 | 120FEE | Busmann | India | 120A | 690V | 500V | 70mm | 3100 | Each | 5 |
| 684503 | 140FEE | Busmann | India | 140A | 690V | 500V | 70mm | 3800 | Each | 5 |
| 690910 | 160FEE | Busmann | India | 160A | 690V | 500V | 70mm | 5700 | Each | 5 |
| 691003 | 200FEE | Busmann | India | 200A | 690V | 500V | 70mm | 11400 | Each | 5 |
| 690V FM High Speed Fuses | | | | | | | | | | |
| 690937 | 180FM | Busmann | India | 180A | 690V | 500V | 85mm | 13500 | Each | 1 |
| 690945 | 200FM | Busmann | India | 200A | 690V | 500V | 85mm | 18500 | Each | 1 |
| 691801 | 225FM | Busmann | India | 225A | 690V | 500V | 85mm | 26500 | Each | 1 |
| 690953 | 250FM | Busmann | India | 250A | 690V | 500V | 85mm | 37500 | Each | 1 |
| 690961 | 280FM | Busmann | India | 280A | 690V | 500V | 85mm | 55000 | Each | 1 |
| 690988 | 315FM | Busmann | India | 315A | 690V | 500V | 85mm | 77000 | Each | 1 |

BUSSMANN Neozed D01/D02 Bottle Fuses



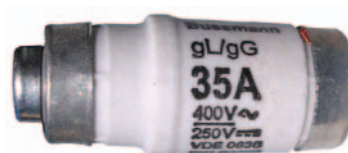
2NZ01



4NZ01



25NZ02



35NZ02

NEOZED DO HRC FUSELINKS (CLASS gG) TO AS/NZS 60269

| Part Number | Description | Brand | Origin | Amps | Volts | Length | Width | Unit | Box Qty |
|--------------------------------|-------------|----------|--------|------|-------|--------|-------|------|---------|
| Neozed D01 Bottle Fuses | | | | | | | | | |
| 687855 | 2NZ01 | Bussmann | India | 2A | 440V | 36mm | 11mm | Each | 10 |
| 687863 | 4NZ01 | Bussmann | India | 4A | 440V | 36mm | 11mm | Each | 10 |
| 687820 | 6NZ01 | Bussmann | India | 6A | 440V | 36mm | 11mm | Each | 10 |
| 687839 | 10NZ01 | Bussmann | India | 10A | 440V | 36mm | 11mm | Each | 10 |
| 687847 | 16NZ01 | Bussmann | India | 16A | 440V | 36mm | 11mm | Each | 10 |
| Neozed D02 Bottle Fuses | | | | | | | | | |
| 687901 | 20NZ02 | Bussmann | India | 20A | 440V | 36mm | 15mm | Each | 10 |
| 687928 | 25NZ02 | Bussmann | India | 25A | 440V | 36mm | 15mm | Each | 10 |
| 687936 | 35NZ02 | Bussmann | India | 35A | 440V | 36mm | 15mm | Each | 10 |
| 687944 | 50NZ02 | Bussmann | India | 50A | 440V | 36mm | 15mm | Each | 10 |
| 687952 | 63NZ02 | Bussmann | India | 63A | 440V | 36mm | 15mm | Each | 10 |



6D16



25D16



4D27



25D27

DIAZED ND HRC FUSELINKS (CLASS gG) TO AS/NZS 60269

| Part Number | Description | Brand | Origin | Amps | Volts | Length | Width | Nib Diameter | Unit | Box Qty |
|--------------------------------|-------------|----------|--------|------|-------|--------|--------|--------------|------|---------|
| Diazed D16 Bottle Fuses | | | | | | | | | | |
| 690597 | 2D16 | Bussmann | India | 2A | 500V | 50mm | 13.2mm | 6mm | Each | 5 |
| 690600 | 4D16 | Bussmann | India | 4A | 500V | 50mm | 13.2mm | 6mm | Each | 5 |
| 690619 | 6D16 | Bussmann | India | 6A | 500V | 50mm | 13.2mm | 6mm | Each | 5 |
| 690627 | 10D16 | Bussmann | India | 10A | 500V | 50mm | 13.2mm | 8mm | Each | 5 |
| 690635 | 16D16 | Bussmann | India | 16A | 500V | 50mm | 13.2mm | 10mm | Each | 5 |
| 690643 | 20D16 | Bussmann | India | 20A | 500V | 50mm | 13.2mm | 12mm | Each | 5 |
| 690651 | 25D16 | Bussmann | India | 25A | 500V | 50mm | 13.2mm | 14mm | Each | 5 |
| Diazed D27 Bottle Fuses | | | | | | | | | | |
| 688657 | 2D27 | Bussmann | India | 2A | 500V | 50mm | 21.5mm | 6mm | Each | 5 |
| 688665 | 4D27 | Bussmann | India | 4A | 500V | 50mm | 21.5mm | 6mm | Each | 5 |
| 688673 | 6D27 | Bussmann | India | 6A | 500V | 50mm | 21.5mm | 6mm | Each | 5 |
| 688681 | 10D27 | Bussmann | India | 10A | 500V | 50mm | 21.5mm | 8mm | Each | 5 |
| 688703 | 16D27 | Bussmann | India | 16A | 500V | 50mm | 21.5mm | 10mm | Each | 5 |
| 688711 | 20D27 | Bussmann | India | 20A | 500V | 50mm | 21.5mm | 12mm | Each | 5 |
| 688738 | 25D27 | Bussmann | India | 25A | 500V | 50mm | 21.5mm | 14mm | Each | 5 |



12kV MV Air

WEATHER-SEALED MV HRC FUSELINKS FOR USE IN AIR

| Part Number | Description | Brand | Origin | Amps | Volts | Break Capacity | Dimensions | Configuration | Unit | Box Qty |
|--|-------------------------|----------|--------|-------|-------|----------------|------------|---------------|------|---------|
| MV 12kV Fuselinks for use in Air* | | | | | | | | | | |
| 671142 | 6.3A Air (12BDGHA6.3) | Bussmann | India | 6.3A | 12kV | 40kA | 359Lx51Dmm | Ferrule | Each | 3 |
| 670154 | 10A Air (12BDGHA10) | Bussmann | India | 10A | 12kV | 40kA | 359Lx51Dmm | Ferrule | Each | 3 |
| 671150 | 16A Air (12BDGHA16) | Bussmann | India | 16A | 12kV | 40kA | 359Lx51Dmm | Ferrule | Each | 3 |
| 671169 | 20A Air (12BDGHA20) | Bussmann | India | 20A | 12kV | 40kA | 359Lx51Dmm | Ferrule | Each | 3 |
| 671371 | 25A Air (12BDGHA25) | Bussmann | India | 25A | 12kV | 40kA | 359Lx51Dmm | Ferrule | Each | 3 |
| 670375 | 31.5A Air (12BDGHA31.5) | Bussmann | India | 31.5A | 12kV | 40kA | 359Lx51Dmm | Ferrule | Each | 3 |
| 671177 | 40A Air (12BDGHA40) | Bussmann | India | 40A | 12kV | 40kA | 359Lx51Dmm | Ferrule | Each | 3 |
| 671185 | 50A Air (12BDGHA50) | Bussmann | India | 50A | 12kV | 40kA | 359Lx51Dmm | Ferrule | Each | 3 |
| 671398 | 56A Air (12BFGHA56) | Bussmann | India | 56A | 12kV | 40kA | 359Lx76Dmm | Ferrule | Each | 3 |
| 671401 | 63A Air (12BFGHA63) | Bussmann | India | 63A | 12kV | 40kA | 359Lx76Dmm | Ferrule | Each | 3 |
| 671193 | 80A Air (12BFGHA80) | Bussmann | India | 80A | 12kV | 40kA | 359Lx76Dmm | Ferrule | Each | 3 |
| 670685 | 90A Air (12BFGHA90) | Bussmann | India | 90A | 12kV | 40kA | 359Lx76Dmm | Ferrule | Each | 3 |
| 671207 | 100A Air (12BFGHA100) | Bussmann | India | 100A | 12kV | 40kA | 359Lx76Dmm | Ferrule | Each | 3 |
| 671215 | 125A Air (12AKGHA125) | Bussmann | India | 125A | 12kV | 40kA | 359Lx76Dmm | Ferrule | Each | 3 |

Fuses on this page comply to BS 2692-1 Standard



12kV MV Oil

MV HRC FUSELINKS FOR USE IN OIL SWITCHGEAR

| Part Number | Description | Brand | Origin | Amps | Volts | Break Capacity | Dimensions | Configuration | Unit | Box Qty |
|---|-------------------------|----------|--------|-------|-------|----------------|--------------|---------------|------|---------|
| MV 12kV Fuselinks for use in Oil | | | | | | | | | | |
| 670251 | 6.3A Oil (12OEFMA6.3) | Bussmann | India | 6.3A | 12kV | 40kA | 254Lx63.5Dmm | Ferrule | Each | 3 |
| 670243 | 10A Oil (12OEFMA10) | Bussmann | India | 10A | 12kV | 40kA | 254Lx63.5Dmm | Ferrule | Each | 3 |
| 670278 | 16A Oil (12OEFMA16) | Bussmann | India | 16A | 12kV | 40kA | 254Lx63.5Dmm | Ferrule | Each | 3 |
| 670286 | 20A Oil (12OEFMA20) | Bussmann | India | 20A | 12kV | 40kA | 254Lx63.5Dmm | Ferrule | Each | 3 |
| 670065 | 25A Oil (12OEFMA25) | Bussmann | India | 25A | 12kV | 40kA | 254Lx63.5Dmm | Ferrule | Each | 3 |
| 670073 | 31.5A Oil (12OEFMA31.5) | Bussmann | India | 31.5A | 12kV | 40kA | 254Lx63.5Dmm | Ferrule | Each | 3 |
| 670081 | 40A Oil (12OEFMA40) | Bussmann | India | 40A | 12kV | 40kA | 254Lx63.5Dmm | Ferrule | Each | 3 |
| 670006 | 50A Oil (12OEFMA50) | Bussmann | India | 50A | 12kV | 40kA | 254Lx63.5Dmm | Ferrule | Each | 3 |
| 670014 | 63A Oil (12OEFMA63) | Bussmann | India | 63A | 12kV | 40kA | 254Lx63.5Dmm | Ferrule | Each | 3 |
| 670111 | 71A Oil (12OHFMA71) | Bussmann | India | 71A | 12kV | 40kA | 254Lx63.5Dmm | Ferrule | Each | 3 |
| 670138 | 80A Oil (12OHFMA80) | Bussmann | India | 80A | 12kV | 40kA | 254Lx63.5Dmm | Ferrule | Each | 3 |
| 671118 | 90A Oil (12OHFMA90) | Bussmann | India | 90A | 12kV | 40kA | 254Lx63.5Dmm | Ferrule | Each | 3 |
| 670537 | 100A Oil (12OHFMA100) | Bussmann | India | 100A | 12kV | 40kA | 254Lx63.5Dmm | Ferrule | Each | 3 |
| 671126 | 125A Oil (12OLGMA125) | Bussmann | India | 125A | 12kV | 40kA | 359Lx63.5Dmm | Ferrule | Each | 3 |
| 671134 | 160A Oil (12OLGMA160) | Bussmann | India | 160A | 12kV | 40kA | 359Lx63.5Dmm | Ferrule | Each | 3 |

Fuses on this page comply to IEC 60282-1 & BS 2692-1 Standards



12kV MV Back Up

WEATHER-SEALED MV HRC BACK UP FUSELINKS

| Part Number | Description | Brand | Origin | Amps | Volts | Break Capacity | Dimensions | Configuration | Unit | Box Qty |
|------------------------------------|-----------------------------|----------|--------|-------|-------|----------------|------------|---------------|------|---------|
| MV 12kV Fuselinks – Back Up | | | | | | | | | | |
| 671223 | 6.3A Back Up (12TDLEJ6.3) | Bussmann | India | 6.3A | 12kV | 63kA | 292Lx51Dmm | Ferrule | Each | 3 |
| 671231 | 10A Back Up (12TDLEJ10) | Bussmann | India | 10A | 12kV | 63kA | 292Lx51Dmm | Ferrule | Each | 3 |
| 671258 | 16A Back Up (12TDLEJ16) | Bussmann | India | 16A | 12kV | 63kA | 292Lx51Dmm | Ferrule | Each | 3 |
| 671266 | 20A Back Up (12TDLEJ20) | Bussmann | India | 20A | 12kV | 63kA | 292Lx51Dmm | Ferrule | Each | 3 |
| 671274 | 25A Back Up (12TDLEJ25) | Bussmann | India | 25A | 12kV | 63kA | 292Lx51Dmm | Ferrule | Each | 3 |
| 671282 | 31.5A Back Up (12TDLEJ31.5) | Bussmann | India | 31.5A | 12kV | 63kA | 292Lx51Dmm | Ferrule | Each | 3 |
| 671290 | 40A Back Up (12TDLEJ40) | Bussmann | India | 40A | 12kV | 63kA | 292Lx51Dmm | Ferrule | Each | 3 |
| 671304 | 50A Back Up (12TDLEJ50) | Bussmann | India | 50A | 12kV | 63kA | 292Lx51Dmm | Ferrule | Each | 3 |
| 671312 | 63A Back Up (12TDLEJ63) | Bussmann | India | 63A | 12kV | 63kA | 292Lx51Dmm | Ferrule | Each | 3 |
| 671320 | 80A Back Up (12THLEJ80) | Bussmann | India | 80A | 12kV | 63kA | 292Lx67Dmm | Ferrule | Each | 3 |
| 671339 | 100A Back Up (12THLEJ100) | Bussmann | India | 100A | 12kV | 63kA | 292Lx67Dmm | Ferrule | Each | 3 |
| 671347 | 125A Back Up (12TKLEJ125) | Bussmann | India | 125A | 12kV | 63kA | 292Lx76Dmm | Ferrule | Each | 3 |
| 671355 | 160A Back Up (12TXLEJ160) | Bussmann | India | 160A | 12kV | 63kA | 292Lx88Dmm | Ferrule | Each | 3 |
| 671363 | 200A Back Up (12TXLEJ200) | Bussmann | India | 200A | 12kV | 63kA | 292Lx88Dmm | Ferrule | Each | 3 |

Fuses on this page comply to IEC 60282-4 & DIN 43265 Standards



12kV MV Full Range

MV HRC FULL RANGE FUSELINKS

| Part Number | Description | Brand | Origin | Amps | Volts | Break Capacity | Dimensions | Configuration | Unit | Box Qty |
|---------------------------------------|--------------------------------|----------|--------|-------|-------|----------------|------------|---------------|------|---------|
| MV 12kV Fuselinks – Full Range | | | | | | | | | | |
| 670545 | 6.3A Full Range (12FDLSJ6.3) | Bussmann | UK | 6.3A | 12kV | 50kA | 292Lx51Dmm | Ferrule | Each | 3 |
| 670553 | 10A Full Range (12FDLSJ10) | Bussmann | UK | 10A | 12kV | 50kA | 292Lx51Dmm | Ferrule | Each | 3 |
| 670642 | 16A Full Range (12FDLSJ16) | Bussmann | UK | 16A | 12kV | 50kA | 292Lx51Dmm | Ferrule | Each | 3 |
| 670502 | 20A Full Range (12FDLSJ20) | Bussmann | UK | 20A | 12kV | 50kA | 292Lx51Dmm | Ferrule | Each | 3 |
| 671010 | 25A Full Range (12FDLSJ25) | Bussmann | UK | 25A | 12kV | 50kA | 292Lx51Dmm | Ferrule | Each | 3 |
| 670499 | 31.5A Full Range (12FDLSJ31.5) | Bussmann | UK | 31.5A | 12kV | 50kA | 292Lx51Dmm | Ferrule | Each | 3 |
| 670030 | 40A Full Range (12FFLSJ40) | Bussmann | UK | 40A | 12kV | 50kA | 292Lx76Dmm | Ferrule | Each | 3 |
| 670510 | 50A Full Range (12FFLSJ350) | Bussmann | UK | 50A | 12kV | 50kA | 292Lx76Dmm | Ferrule | Each | 3 |
| 670049 | 63A Full Range (12FFLSJ63) | Bussmann | UK | 63A | 12kV | 50kA | 292Lx76Dmm | Ferrule | Each | 3 |
| 670057 | 80A Full Range (12FXLSJ80) | Bussmann | UK | 80A | 12kV | 50kA | 292Lx88Dmm | Ferrule | Each | 3 |
| 670529 | 100A Full Range (12FXLSJ100) | Bussmann | UK | 100A | 12kV | 50kA | 292Lx88Dmm | Ferrule | Each | 3 |

Fuses on this page comply to IEC 60282-4 & DIN 43265 Standards



M8 DMC Standoffs



M10 DMC Standoffs

DMC STANDOFFS WITH STEEL INSERTS (IEC 60660)

| Part Number | Description | Brand | Origin | Rating | Inserts | Height | Colour | Construction | Colour | Unit | Weight | Box Qty |
|--------------------------|---------------------------|-------|--------|--------|---------|--------|--------|-------------------------|--------|------|--------|---------|
| M8 DMC Standoffs | | | | | | | | | | | | |
| 515191 | NZI 6/35/M8 DMC Standoff | NZI | NZ | 1.5kV | M8 | 35mm | Grey | DMC & Zinc-Plated Steel | Grey | Each | 95g | 12 |
| 515221 | NZI 6/38/M8 DMC Standoff | NZI | NZ | 1.5kV | M8 | 38mm | Grey | DMC & Zinc-Plated Steel | Grey | Each | 110g | 12 |
| 515264 | NZI 6/45/M8 DMC Standoff | NZI | NZ | 1.5kV | M8 | 45mm | Grey | DMC & Zinc-Plated Steel | Grey | Each | 135g | 12 |
| 514705 | NZI 6/50/M8 DMC Standoff | NZI | NZ | 1.5kV | M8 | 50mm | Grey | DMC & Zinc-Plated Steel | Grey | Each | 155g | 12 |
| M10 DMC Standoffs | | | | | | | | | | | | |
| 515299 | NZI 6/35/M10 DMC Standoff | NZI | NZ | 1.5kV | M10 | 35mm | Grey | DMC & Zinc-Plated Steel | Grey | Each | 90g | 12 |
| 515329 | NZI 6/38/M10 DMC Standoff | NZI | NZ | 1.5kV | M10 | 38mm | Grey | DMC & Zinc-Plated Steel | Grey | Each | 105g | 12 |
| 515353 | NZI 6/45/M10 DMC Standoff | NZI | NZ | 1.5kV | M10 | 45mm | Grey | DMC & Zinc-Plated Steel | Grey | Each | 130g | 12 |
| 514772 | NZI 6/50/M10 DMC Standoff | NZI | NZ | 1.5kV | M10 | 50mm | Grey | DMC & Zinc-Plated Steel | Grey | Each | 150g | 12 |



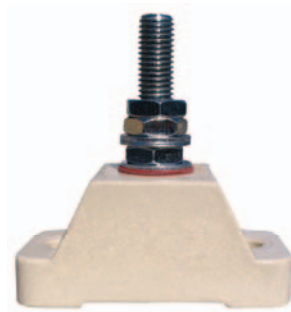
M6 Busbar Support



M8 Busbar Support



M10 Busbar Support



M12 Busbar Support

PORCELAIN BUSBAR SUPPORTS - COMPLETE WITH BOLT (IEC 60273)

| Part Number | Description | Brand | Origin | Rating | Bolt | Material | Glaze | Unit | Weight | Box Qty |
|----------------------------|------------------------|-------|--------|--------|----------|----------------------------|-------|------|--------|---------|
| 3kV Busbar Supports | | | | | | | | | | |
| 186104 | NZI M6 Busbar Support | NZI | NZ | 3kV | 1/4" M6 | Porcelain & Z/plated Steel | White | Each | 171g | 6 |
| 185043 | NZI M8 Busbar Support | NZI | NZ | 3kV | 5/16" M8 | Porcelain & Z/plated Steel | White | Each | 185g | 6 |
| 186112 | NZI M10 Busbar Support | NZI | NZ | 3kV | 3/8" M10 | Porcelain & Z/plated Steel | White | Each | 215g | 6 |
| 186120 | NZI M12 Busbar Support | NZI | NZ | 3kV | 1/2" M12 | Porcelain & Z/plated Steel | White | Each | 330g | 6 |



1004



3004 Side View



2005CFH



1005 & 2005



3005



2004

1/2/3 WAY PORCELAIN CONNECTORS (AS/NZS 60998)

| Part Number | Description | Brand | Origin | Voltage | Rating | Fixing Hole | Glaze | Unit | Weight | Box Qty |
|-----------------------|-----------------------------|-------|--------|---------|--------|--------------------|----------|------|--------|---------|
| 15A Connectors | | | | | | | | | | |
| 184012 | NZI 1004 1-Way Connector | NZI | NZ | 500V | 15A | No Fixing Hole | Unglazed | Each | 9g | 28 |
| 184047 | NZI 2004 2-Way Connector | NZI | NZ | 500V | 15A | No Fixing Hole | Clear | Each | 16g | 18 |
| 184063 | NZI 2004CFH 2-Way Connector | NZI | NZ | 500V | 15A | Centre Fixing Hole | Clear | Each | 21g | 12 |
| 184098 | NZI 3004 3-Way Connector | NZI | NZ | 500V | 15A | No Fixing Hole | Clear | Each | 23g | 12 |
| 184128 | NZI 3004CFH 3-Way Connector | NZI | NZ | 500V | 15A | Centre Fixing Hole | Clear | Each | 30g | 9 |
| 30A Connectors | | | | | | | | | | |
| 184144 | NZI 1005 1-Way Connector | NZI | NZ | 500V | 30A | No Fixing Hole | Clear | Each | 32g | 14 |
| 184179 | NZI 2005 2-Way Connector | NZI | NZ | 500V | 30A | No Fixing Hole | Clear | Each | 33g | 8 |
| 184195 | NZI 2005CFH 2-Way Connector | NZI | NZ | 500V | 30A | Centre Fixing Hole | Clear | Each | 52g | 6 |
| 184217 | NZI 3005 3-Way Connector | NZI | NZ | 500V | 30A | No Fixing Hole | Clear | Each | 57g | 6 |
| 184233 | NZI 3005CFH 3-Way Connector | NZI | NZ | 500V | 30A | Centre Fixing Hole | Clear | Each | 77g | 4 |
| 60A Connectors | | | | | | | | | | |
| 184276 | NZI 2006CFH 2-Way Connector | NZI | NZ | 500V | 60A | Centre Fixing Hole | Clear | Each | 105g | 1 |
| 184284 | NZI 3006CFH 3-Way Connector | NZI | NZ | 500V | 60A | Centre Fixing Hole | Clear | Each | 150g | 1 |

| | | |
|---|---|--|
|  BC 960 |  BC 961 |  GES 926 |
|  ES 971 |  ES 975 |  GES 926-1 (74mm height) |
|  ES 970 |  ES T10 |  GES 926-3 (64mm height) |

'R' RESTRICTED MOUNTING LAMP HOLDERS (ES/GES to AS/NZS 60998, BC to AS 3117)

| Part Number | Description | Brand | Origin | Voltage | Rating | Mounting | Shrouding | Glaze | Unit | Weight | Box Qty |
|--|--------------------------|-------|--------|---------|--------|-------------------------|------------|-------|------|--------|---------|
| Bayonet Cap Lampholders (max 250V) | | | | | | | | | | | |
| 164046 | NZI BC 960 Lampholder | NZI | NZ | 240V | 5A | External Side | Unshrouded | Clear | Each | 70g | 8 |
| 164054 | NZI BC 961 Lampholder | NZI | NZ | 240V | 5A | Ext Back (2-Pin Batten) | Unshrouded | Clear | Each | 60g | 8 |
| Edison Screw Lampholders (max 250V) | | | | | | | | | | | |
| 164194 | NZI ES 971 Lampholder | NZI | NZ | 240V | 5A | External Back | Unshrouded | Clear | Each | 85g | 8 |
| 164216 | NZI ES 975 Lampholder | NZI | NZ | 240V | 5A | Internal Back | Unshrouded | Clear | Each | 70g | 8 |
| 166316 | NZI ES 970 Lampholder | NZI | NZ | 240V | 5A | External Side | Unshrouded | Clear | Each | 105g | 8 |
| 164275 | NZI ES T10 Lampholder | NZI | NZ | 240V | 5A | External Back (HD) | Unshrouded | Clear | Each | 75g | 8 |
| Giant Edison Screw Lampholders | | | | | | | | | | | |
| 164011 | NZI GES 926 Lampholder | NZI | NZ | 650V | 15A | Internal Back | Shrouded | White | Each | 260g | 6 |
| 164038 | NZI GES 926-1 Lampholder | NZI | NZ | 650V | 15A | Internal Back | Unshrouded | White | Each | 245g | 6 |
| 164380 | NZI GES 926-3 Lampholder | NZI | NZ | 650V | 15A | Internal Back | Unshrouded | White | Each | 225g | 6 |



New Charcoal NZI Flame-Retardant MCB Safety Bases



Polyester Butylene Terephthalate



Made in New Zealand

UNIVERSAL PLASTIC MCB SAFETY BASES (AS/NZS 3121)

| Part Number | Description | Brand | Origin | Voltage | Rating | Material | Colour | Unit | Weight | Box Qty |
|-------------------------------|------------------------------------|-------|--------|---------|--------|----------------------------------|----------|------|--------|---------|
| Back Entry Safety Base | | | | | | | | | | |
| 631779 | NZI Back Entry Plastic Safety Base | NZI | NZ | 240V | 6-40A | Glass-Reinforced Polyester Resin | Charcoal | Each | 26g | 36 |
| End Entry Safety Base | | | | | | | | | | |
| 631809 | NZI End Entry Plastic Safety Base | NZI | NZ | 240V | 6-40A | Glass-Reinforced Polyester Resin | Charcoal | Each | 24g | 36 |

**NEW ZEALAND INSULATORS LIMITED**

Established 1924

NZI Customer Service

Phone +64-3-6878100, Fax +64-3-6158125

Office Hours 7.30am – 5.00pm (weekdays NZ Time)

Email sales@nzinsulators.co.nz**NZI Temuka Factory, HQ & South Island Warehouse**

Thomas Street, PO Box 5, Temuka 7948

Phone +64-3-6878100

NZI Auckland Branch & North Island Warehouse

11 Wookey Lane, Kumeu 0891

Phone +64-9-4125941

NZI Brands NZI, Temuka Pottery, AX**Exclusive Distribution in NZ** DTR, Payer, NGK Stanger, Fulton, Efen**Shared Distribution in NZ** Avon, Cooper Bussmann, Red Spot**Websites** nzinsulators.co.nz & temukapottery.co.nz**Timing**

This catalogue was released 14/1/13, all product changes are effective from that date.

Freight & Order Size

There is no minimum order. All orders exceeding NZ\$600 excl GST are freight free New Zealand wide. Orders under \$600 are warmly welcomed, but we ask for a freight cost contribution, as per the most recent NZI Freight Rate Card – which is posted & updated on the home page of nzinsulators.co.nz. We do ask that whenever possible, orders be made in full-box multiples.

Wholesalers

Wholesalers can buy direct from NZI at Trade Price less a discount. The 2013 LV Pocket Book lists Trade Prices as they stood at 29/10/12. The freight-free threshold for Wholesalers (buying off Trade Price) is NZ\$100 excl GST. Wholesalers who also operate a Network Store need two NZI accounts.

Terms of Trade

Transactions with New Zealand Insulators are made under overarching 'terms of trade' which can be downloaded from the home page of nzinsulators.co.nz.

Copyright

This catalogue, our coding, product images and the brands NZI, Temuka Pottery & AX are the intellectual property of New Zealand Insulators Limited.

Thank you for supporting NZI's Temuka factory.

To retain our vital (local) manufacturing capability, please specify NZI brand.



AX



NEW ZEALAND INSULATORS



TEMUKA

NZI CUSTOMER SERVICES
7.30AM – 5.00PM WEEKDAYS
T +64-3-6878100
F +64-3-6158125
E sales@nzinsulators.co.nz

HQ & FACTORY
THOMAS STREET
PO BOX 5 TEMUKA 7948

AUCKLAND BRANCH
11 WOOKEY LANE
KUMEU 0810

W nzinsulators.co.nz