

NEW ZEALAND INSULATORS



TEMUKA

2018 CATALOGUE



New Zealand Insulators Ltd since 1924



This 2018 updated catalogue showcases the current range of products that New Zealand Insulators is offering ex-stock, in 2018.

Again our range has been expanded and includes products offered by DTR, Avon,

Fulton, Payer, GIG, Bussmann by Eaton and Polesaver.

These agency products are held and distributed in New Zealand by NZI from our HQ and factory in Temuka plus our Auckland distribution centre in Kumeu.

In the following pages you will also find an extensive range of NZI porcelain products, all made in our Temuka factory South Canterbury New Zealand.

We have continued to expand NZI's range proposition beyond just porcelain insulators – although insulators definitely still form the core of our product offer.

This catalogue encompasses the Low Voltage and Medium Voltage range of standard products. Copies of this catalogue are freely available through NZI or via our website.

Our sales team can provide separate trade pricing for LV products or special MV pricing (on request)

This 2018 catalogue is also available as a PDF file both in its entirety and by brand, online at www.nzinsulators.co.nz PDF drawings for many of the products can also be downloaded from the NZI website.

As our product range increases during 2018, we'll use the "NZI – Network Updates" in the ElectroLink magazine, to update you on developments.

Our focus is supporting customers and the electrical industry by manufacturing quality porcelain and electrical fittings complemented with reputable agencies, whilst providing outstanding service and innovation.

Thank you all for supporting New Zealand Insulators.

Chris van der Werff, General Manager
New Zealand Insulators Limited
Mobile +64 27 7066 205
Email chris@nzinsulators.co.nz

NZI BRAND made in Temuka

NZI Reels, Spike & Bundles	2-3
NZI 510/511 & Bundles	4-5
NZI 11kV Insulators & Bundles	6-11
NZI 22kV Insulators	14, 16
NZI 33kV Insulators	17-20
NZI 66kV Insulators	24
NZI 110kV Insulators	24
NZI Standoffs	25
NZI Station Posts	27
NZI Guy Strains	40
NZI Lineguard Disconnects	67
NZI Mini Wedge Fuseholder	67
NZI Rewireable & HRC Cutouts	69-70
NZI Fuseholders	74,78
NZI Low Voltage Panels	99
NZI DMC Standoffs	102
NZI Busbar Supports	103
NZI Porcelain Connectors	104
NZI Porcelain Lampholders	105

AX BRAND made for NZI, multiple sources

AX Spindles	28-29
AX Clevis Thimbles	41

AVON INDUSTRIES made in Whangarei

Avon Shackle Straps & U Shackles	2
Avon Crucifix	31
Avon Line Hardware	32
Avon Earth Rods	61

PAYER PREFORMS made in Canada

Payer Armour Rods	34
Payer Line Guards & Line Splices	35
Payer Aluminium Deadends	36
Payer Full Tension Deadends	37
Payer Neoprene Deadends	38
Payer Guy Grips & Guy Locks	39

POLESAVER made in UK

Polesaver Sleeves & Fire Protection Fabric	30
--	----

DTR ELECTRIC made in Korea

DTR 15kV Polymer Line Posts	12-13
DTR 25kV Polymer Line Posts	15
DTR 35kV Polymer Line Posts	21
DTR 46kV Polymer Line Posts	22
DTR 69kV Polymer Line Posts	23
DTR Station Posts	26
DTR Crucifix Standoff	31
DTR Polymer Strains & Bundles	41-42
DTR Suspension Strains	43-44
DTR Surge Arresters	47-50
DTR Polymer EDO Dropouts	52

GIG GLASS DISCS made in Ukraine

GIG Glass Discs for Distribution	45
GIG Glass Discs for Transmission	46

NGK STANGER made in Melbourne

NGK-S LV Isolators	51
NGK-S EDO Dropouts	53-54
NGK-S HVI Solid Link Disconnects	55-56
NGK-S Air Break Switches	57
NGK-S Gas Break Switches	58
NGK-S FSD Disconnects	68

FULTON INDUSTRIES made in Gosford

Fulton Scratch Brushes	33
Fulton Earth Rods	59-60
Fulton Earthing Pits	62
Fulton Bolted Connectors	63-65
Fulton Wedge Clamp	66

COOPER BUSSMANN made in India/UK

Safeclip/Safeloc Fuseholders	71
Red Spot Fuseholders	73,78
Camaster Fuseholders	73,78
Bussmann	
HRC Fuselinks	72, 75-77, 79, 81, 83-98
House Service Fuseholders	80
Bussmann DIN Switches	82
Bussmann Expulsion Fuses	100-101
NZ Insulators Fusible Solutions	106
HRC Fuselinks Compatibility Chart	107

AVON SHACKLES & NZI Reel BUNDLES



SHACKLE STRAPS & U SHACKLES

Part Number	Description	Brand	Origin	Length (mm)	Width (mm)	Thick (mm)	Holes	HDG (mm)	Unit	Weight	Box Qty	Drawing
Shackle Straps												
537004	Avon AA20001 Shackle Strap 7"	Avon	NZ	180	32	3	14	To 4680:2006	Each	140g	100	AA20001
537012	Avon AA20009 Shackle Strap #11	Avon	NZ	170	30	2	14	To 4680:2006	Each	85g	200	AA20009
537020	Avon AA20011 Shackle Strap #8 Offset	Avon	NZ	180	32	3	18	To 4680:2006	Each	130g	100	AA20011
U Shackles												
537039	Avon AA23001 210 U Shackle Small	Avon	NZ	85	32	3	14	To 4680:2006	Each	160g	100	AA23001
537047	Avon AA23002 205 U Shackle Large	Avon	NZ	105	32	3	14	To 4680:2006	Each	210g	50	AA23002
537063	Avon AA23003 320 U Shackle Extra Large	Avon	NZ	132	40	5	14	To 4680:2006	Each	500g	30	AA23003

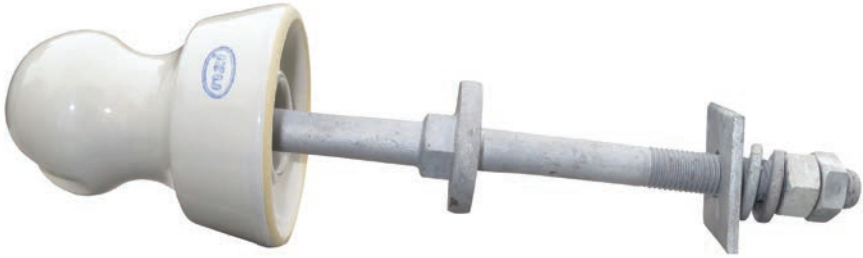
PRE-ASSEMBLED REEL BUNDLES

Part Number	Description	Brands	Origin	Status	Unit	Weight	Box Qty
Reel & Shackle Strap Bundles							
102148	NZI 210 Reel + Avon 7" Shackle Strap + 2 x M12 110 Bolt	NZI/Avon	NZ	Assembled	Bundle	750g	20
102180	NZI 205 Reel + Avon 7" Shackle Strap + 2 x M12 110 Bolt	NZI/Avon	NZ	Assembled	Bundle	1.1kg	10
Reel & U Shackle Bundles							
102121	NZI 210 Reel + Avon Small U Shackle + M12 110 Bolt	NZI/Avon	NZ	Assembled	Bundle	550g	20
102156	NZI 205 Reel + Avon E/Large U Shackle + M12 110 Bolt	NZI/Avon	NZ	Assembled	Bundle	1.2kg	10

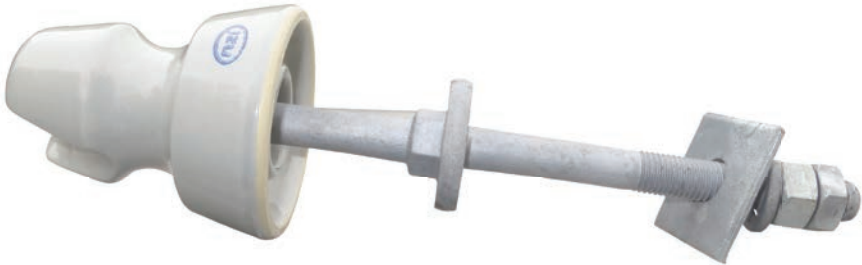


LV PORCELAIN REELS & SPIKE

Part Number	Description	Brand	Origin	Rated	Groove	Load	Fixing	Glaze	Unit	Weight	Box Qty	Drawing
Reels												
109029	NZI 120 Reel	NZI	NZ		13mm	4.5kN	14mm Diameter	Clear	Each	130g	30	S1326
109207	NZI 210 Reel	NZI	NZ	650V	10mm	6kN	17.5mm Diameter	Grey	Each	220g	80	S1331
109061	NZI 220 Reel	NZI	NZ	650V	19mm	5.5kN	17mm Diameter	Grey	Each	295g	80	S1332
109088	NZI 224 Trurip Reel	NZI	NZ	650V	25.5mm	13.5kN	17.5mm Diameter	Grey	Each	385g	34	S1098
109010	NZI 205 Reel	NZI	NZ	3.3kV	18mm	10kN	17.5mm Diameter	Grey	Each	540g	42	S1330
Spike												
100501	NZI 103 Spike	NZI	NZ	650V	16mm Hole	4kN	Coach Screw	Grey	Each	325g	50	D267-0502



510 + Cordeau Spindle + Washer



511 + Cordeau Spindle + Washer



Preassembled



Full AX Fittings



16/Box

PRE-ASSEMBLED LV INSULATOR BUNDLES

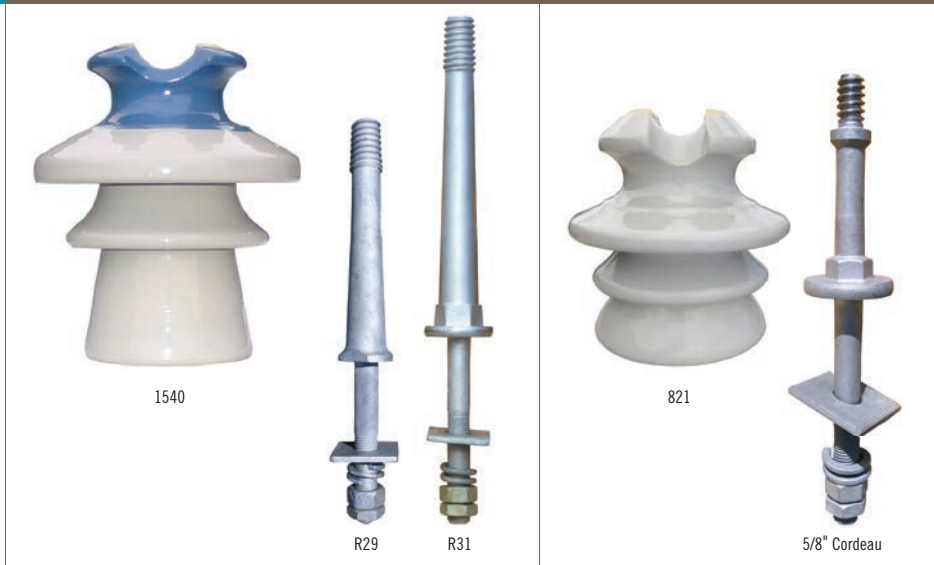
Part Number	Description	Brands	Origin	Assembled	Unit	Weight	Box Qty
510 Bundle							
102164	NZI 510 Insulator + AX 5/8 Cordeau Spindle + AX Oiled Leather Washer	NZI/AX	NZ	Preassembled	Bundle	1.1kg	16
511 Bundle							
102172	NZI 511 Insulator + AX 5/8 Cordeau Spindle + AX Oiled Leather Washer	NZI/AX	NZ	Preassembled	Bundle	1.1kg	16



LV PORCELAIN PIN-TYPE INSULATORS (TIE TOP)

Part Number	Description	Brand	Origin	Groove	Top	Line Voltage	Colour	Thread	Unit	Weight	Box/Pallet	Drawing
LV Pin-Type Tie Top												
102040	NZI 510 (Round Top)	NZI	NZ	26mm	Tie Top	0.4kV-3kV	Grey	5/8" Cordeau	Each	605g	30/1200	S1003
102067	NZI 511 (Square Top)	NZI	NZ	32mm	Tie Top	0.4kV-3kV	Grey	5/8" Cordeau	Each	600g	30/1200	S1656
Part Number	Description	Brand	Origin	Length	Strength	Diameter	Head	Thread	Unit	Weight	Box/Pallet	Drawing
Spindle for 510/511												
540358	5/8 Cordeau Spindle	AX	China	118/145mm	3.3kN	M16	Steel	5/8" Cordeau	Each	670g	30/1200	D374-2009
Part Number	Description	Brand	Origin	Detail	OD	Internal Diameter	Unit	Weight	Pack Qty			
Washer for 510/511												
540234	Leather Washer	AX	NZ	Oiled Leather	23mm	5/8" (15.9mm)	Each	1.2g	90			

NZI 1540/821 Pin-Type Tie Top & Spindles



11kV PORCELAIN PIN-TYPE INSULATORS (TIE TOP)

Part Number	Description	Brand	Origin	Creepage	Top	Groove	Colour	Thread	Unit Weight	Box/Pallet	Drawing
1540 Pin-Type Tie Top											
104574	NZI 1540W	NZI	NZ	300mm	Tie Top	32mm	Grey	1 & 3/8"	Each 2.0kg	6/144	S1071-21
Spindles for 1540											
540463	AX R31 Steel Spindle	AX	China	305/178mm	10kN	M22	Steel	BS Large Steel Head	Each 2.9kg	6/288	D374-2023
540706	AX R29 Steel Spindle	AX	UK	230/152mm	10kN	M22	Steel	BS Large Steel Head	Each 1.9kg	6/240	D374-2110
Part Number	Description	Brand	Origin	Creepage	Top	Groove	Colour	Thread	Unit Weight	Box Qty	Drawing
821 Pin-Type Tie Top											
103608	NZI 821	NZI	NZ	185mm	Tie Top	23mm	Grey	5/8" Cordeau	Each 930g	18	S1310
Spindle for 821											
540358	AX 5/8 Cordeau Spindle	AX	China	118/145mm	3.3kN	M16	Steel	5/8" Cordeau	Each 670g	30/1200	D374-2009



11kV PORCELAIN PIN-TYPE INSULATORS (TIE TOP)

Part Number	Description	Brand	Origin	Creepage	Top	Groove	Colour	Thread	Unit	Weight	Box/ Pallet	Drawing
11kV Pin Insulators												
103160	NZI 1130W (26mm Groove)	NZI	NZ	250mm	Tie Top	26mm	Grey	1 Inch SLHT	Each	1.5kg	12/288	M1022-14
104507	NZI 1130W (32mm Groove)	NZI	NZ	250mm	Tie Top	32mm	Grey	1 Inch SLHT	Each	1.5kg	12/288	M1022-17

Part Number	Description	Brand	Origin	Length	Strength	Diameter	Head	Thread	Unit	Weight	Box Qty	Drawing
Spindles for 1130												
536164	AX Nema 1" Nylon Spindle	AX	China	152/146mm	6kN	M20	Nylon	1 Inch SLHT	Each	1.0kg	12/480	D374-2134
536326	AX Nema 1" Lead Spindle	AX	China	152/146mm	6kN	M20	Lead	1 Inch SLHT	Each	1.1kg	12/480	D374-2118

1130 Bundles												
103837	NZI 1130W26 + AX Nema Nylon Spindle							Assembled Bundle	2.5kg	6	D750-0502	
103934	NZI 1130W32 + AX Nema Nylon Spindle							Assembled Bundle	2.5kg	6	D750-0502	
103403	NZI 1130W26 + AX Nema Lead Spindle							Assembled Bundle	2.5kg	6	D750-0502	
103438	NZI 1130W32 + AX Nema Lead Spindle							Assembled Bundle	2.5kg	6	D750-0502	

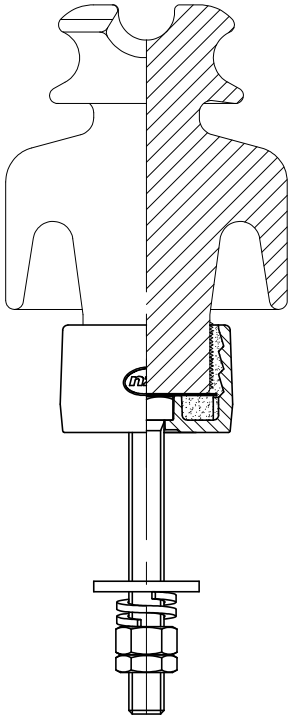
NZI 11kV LINE POSTS Tie Top



11kV PORCELAIN LINE POST INSULATORS (TIE TOP)

Part Number	Description	Brand	Origin	Creepage	Top	Groove	kN	Stud	Glaze	Unit	Weight	Box/Pallet	Drawing
11kV Economy* Tie Top Line Post													
464740	NZI 11kV 250W26 Line Post	NZI	NZ	250mm	Tie Top	26mm	10	160mm M20	Grey	Each	6.5kg	3/144	D632-0578
* economy option with lower creepage, no radio silent, 26mm groove, 3mm washer + full nut only, in a cardboard box													
11kV Tie Top Line Post													
460818	NZI 11kV 300W32 Line Post	NZI	NZ	300mm	Tie Top	32mm	10	160mm M20	Grey	Each	7.0kg	3/144	D632-0551
464678	NZI 11kV 300W32 Line Post	NZI	NZ	300mm	Tie Top	32mm	10	205mm M20	Grey	Each	7.0kg	3/144	D632-0560
465577	NZI 11kV 400W32 Line Post	NZI	NZ	400mm	Tie Top	32mm	10	160mm M20	Grey	Each	7.5kg	3/126	D632-0587





11/305W32 Fog



11/420W32 Ultra Premium

11kV PORCELAIN LINE POST INSULATORS (TIE TOP)

Part Number	Description	Brand	Origin	Creepage	Top	Groove	kN	Stud	Glaze	Unit	Weight	Box/ Drawing	Pallet
11kV Fog Profile Tie Top Line Post													
465410	NZI 11kV 305W32 Line Post	NZI	NZ	305mm	Tie Top	32mm	7	160mm M20	Grey	Each	6.5kg	2/80	D632-0579
11kV Ultra Premium Tie Top Line Post													
464314	NZI 11kV 420W32 Line Post	NZI	NZ	420mm	Tie Top	32mm	17.5	160mm M20	Grey	Each	8.4kg	1/40	D632-0564
464287	NZI 11kV 420W32 Line Post	NZI	NZ	420mm	Tie Top	32mm	17.5	190mm M20	Grey	Each	8.4kg	1/40	D632-0565

NZI 1132T Pin-Type Clamp Top & Spindle



11kV PORCELAIN PIN-TYPE INSULATOR (CLAMP TOP)

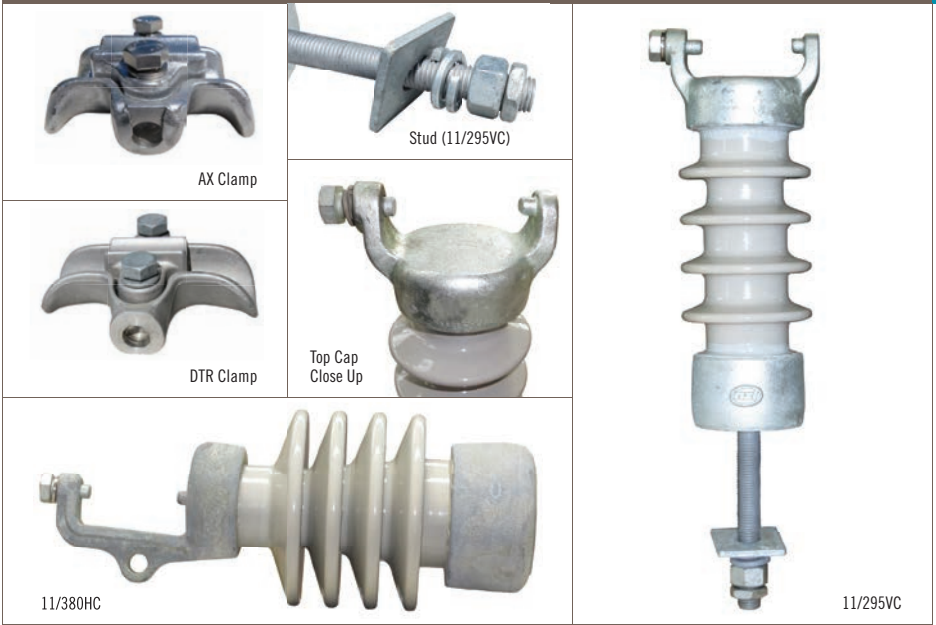
Part Number	Description	Brand	Origin	Creepage	Top	Clamp	Glaze	Thread	Unit	Weight	Box/ Pallet	Drawing
11kV Pin-Type Clamp Top												
104175	NZI 1132T Insulator	NZI	NZ	250mm	Cap & Pintle	Separate	Grey	BS Small Steel Head	Each	3.6kg	6/144	D351-0502

Part Number	Description	Brand	Origin	Conductor Range	Length	Width	Construction	Unit	Weight	Box Qty	Drawing
Clamp for 1132T (sold separately)											
465283	AX 10-38mm Special Clamp	AX	NZ	10-38mm	127mm	98mm	Aluminium	Each	450g	12	D330-0503

Part Number	Description	Brand	Origin	Length	Strength	Diameter	Head	Thread	Unit	Weight	Box/ Pallet	Drawing
Spindle for 1132T												
540528	AX R23 Spindle	AX	UK	170/130mm	10kN	M18	Steel	BS Small Steel Head	Each	1.1kg	12/240	D374-2027



NZI 11kV LINE POSTS Clamp Top



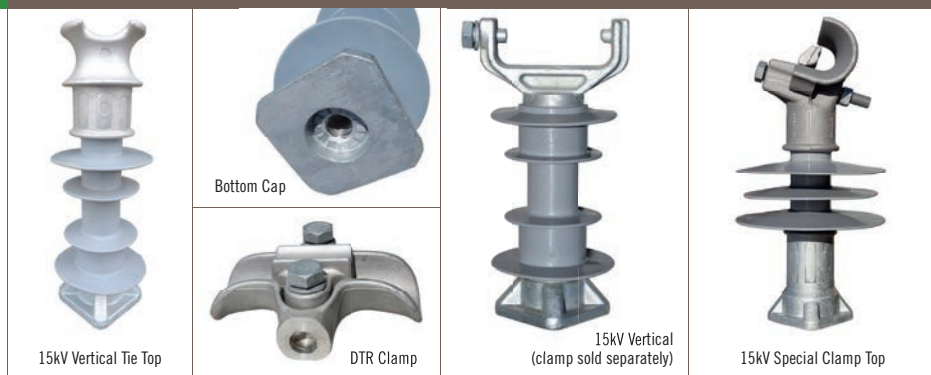
11kV PORCELAIN LINE POST INSULATORS (CLAMP TOP)

Part Number	Description	Brand	Origin	Creepage kN	Top	Clamp	Glaze	Stud	Unit	Weight	Box/Pallet	Drawing
11kV Vertical Clamp Line Post												
464589	NZI 11kV 295VC Line Post	NZI	NZ	295mm	9.5	Cap & Pintle	Separate	Grey M20	160mm	Each	7.0kg	3/72 D724-0526
11kV Horizontal Clamp Line Post												
462411	NZI 11kV 380HC Line Post	NZI	NZ	380mm	12	Cap & Pintle	Separate	Grey	Separate	Each	12.0kg	1/40 D725-0510

Part Number	Description	Brand	Origin	Conductor Length Range	Width	Construction	Unit	Weight	Box Qty	Drawing
Clamp options for 11kV Line Posts (sold separately)										
461792	AX 10-38mm Trunnion Clamp	AX	NZ	10-38mm	127mm	98mm Aluminium	Each	450g	12	D330-0501
553727	DTR 13-27mm Trunnion Clamp	DTR	Korea	13-27mm	135mm	98mm Aluminium	Each	650g	6	DTR-ATC-106

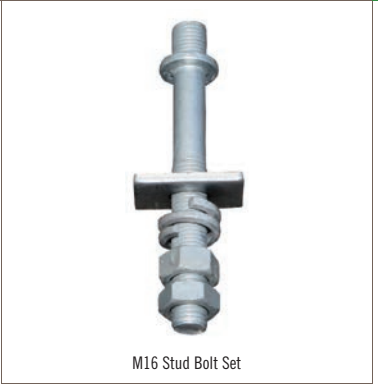
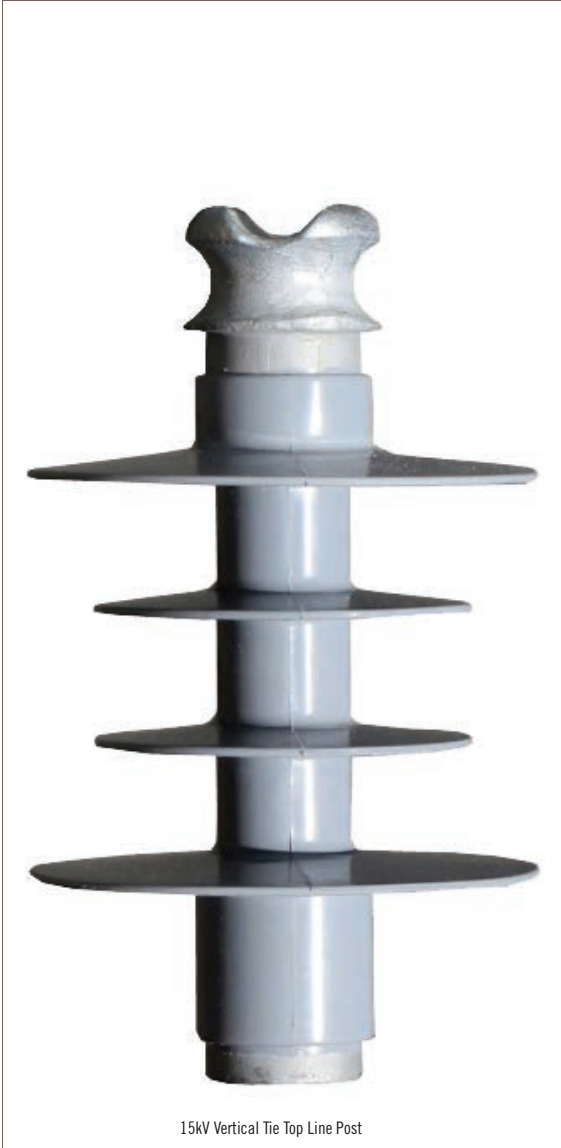
Part Number	Description	Brand	Origin	Length	Diameter	Fixings	Unit	Weight	Box Qty	Drawing
Stud options for 11/380HC Horizontal Post (sold separately)										
465291	AX 45mm Line Post Stud	AX	NZ	45mm	M20	SW/FN	Each	400g	24	D330-2013
465305	AX 160mm Line Post Stud	AX	NZ	160mm	M20	FW/SW/FN/HN	Each	710g	18	D330-2022
465313	AX 205mm Line Post Stud	AX	NZ	205mm	M20	FW/SW/FN/HN	Each	800g	12	D330-2059

DTR 15kV LINE POSTS (Tie Top & Clamp Top)



15kV POLYMER LINE POST INSULATORS (TIE TOP & CLAMP TOP)

Part Number	Description	Brand	Origin	Creepage kN	Top	Colour	Clamp & Stud	Unit Weight	Box/ Pallet	Drawing
15kV Vertical Line Posts										
553239	DTR 15kV Vertical Tie Top Line Post	DTR	Korea	357mm	12.5 Tie Top	Grey	Separate	Each 3.5kg	6/120	DTR-LPCN-15SK-NZI
553859	DTR 15kV Vertical Tie Top Line Post (HP)	DTR	Korea	476mm	12.5 Tie Top	Grey	Separate	Each 4.0kg	6/120	LPCN-15SK-HP-M20
553093	DTR 15kV Vertical Clamp Top Line Post	DTR	Korea	322mm	12.5 Clamp Top	Grey	Separate	Each 4.5kg	6/120	DTR-LPV15SK-NZI
553867	DTR 15kV Vertical Clamp Top Line Post (HP)	DTR	Korea	476mm	12.5 Clamp Top	Grey	Separate	Each 5.0kg	6/120	LPV-15SK-HP-1-M20
553875	DTR 15kV Vertical Special Clamp Top Line Post	DTR	Korea	357mm	12.5 Clamp Top	Grey	Separate	Each 5.0kg	6/120	LPSC-15SK-M20
553883	DTR 15kV Vertical Special Clamp Top Line Post (HP)	DTR	Korea	476mm	12.5 Clamp Top	Grey	Separate	Each 5.5kg	6/120	LPSC-15SK-HP-M20
Part Number	Description	Brand	Origin	Conductor Range	Length	Width	Construction	Unit Weight	Box Qty	Drawing
Clamp options for DTR 15kV Line Posts (sold separately)										
553727	DTR 13-27mm Trunnion Clamp	DTR	Korea	13-27mm	135mm	98mm	Aluminium	Each 650g	6	DTR-ATC-106
461792	AX 10-38mm Trunnion Clamp	AX	NZ	10-38mm	127mm	98mm	Aluminium	Each 450g	12	D330-0501
Part Number	Description	Brand	Origin	Length	Diameter	Fixings	Unit Weight	Box/ Pallet	Drawing	
Stud options for DTR 15kV Line Posts (sold separately)										
553662	DTR 48mm Line Post Stud	DTR	Korea	48mm	M20	FW/SW/FN	Each 300g	96	STD48M20	
553581	DTR 160mm Line Post Stud	DTR	Korea	160mm	M20	FW/SW/FN	Each 700g	72	STD160M20	
553697	DTR 200mm Line Post Stud	DTR	Korea	200mm	M20	FW/SW/FN	Each 850g	48	STD200M20	
Gain Bases for DTR 15kV Line Posts (sold separately)										
553174	DTR Vertical Gain Base	DTR	Korea	300mm			Each 4.5kg	6/60	DTR-GBV	



15kV POLYMER LINE POST INSULATOR (TIE TOP)

Part Number	Description	Brand	Origin	Creepage	kN	Top	Colour	Unit	Weight	Box/Pallet	Drawing
553778	DTR 15kV Vertical Tie Top Line Post	DTR	Korea	540mm	12.5	Tie Top	Grey	Each	2.5kg	6/120	DTR-LPCN-15SK-SP
includes	M16 Stud Bolt Set	DTR	Korea					Each	0.5kg		STD160M16

NZI 22kV PIN-TYPE Tie Top & Spindles



22kV PORCELAIN PIN INSULATOR (TIE TOP)

Part Number	Description	Brand	Origin	Creepage	Top	Groove	Colour	Thread	Unit	Weight	Box/ Pallet	Drawing
22kV Pin-Type Tie Top												
106941	NZI 22/450	NZI	NZ	450mm	Tie Top	32mm	Grey	Pattern C	Each	3.6kg	6/120	S2466-1

Part Number	Description	Brand	Origin	Length	Strength	Diameter	Head	Thread	Unit	Weight	Box/ Pallet	Drawing
Spindles for ALP22/450												
538213	AX M20 Pattern C Spindle (20mm)	AX	China	200/185mm	10kN	M20	Lead	Pattern C	Each	2.2kg	6/240	D374-2084
538205	AX M24 Pattern C Spindle (24mm)	AX	China	200/185mm	11kN	M24	Lead	Pattern C	Each	2.4kg	6/240	D374-2085

DTR 25kV LINE POSTS (Tie Top & Clamp Top)



25kV POLYMER LINE POST INSULATORS (TIE TOP & CLAMP TOP)

Part Number	Description	Brand	Origin	Creepage kN	Top	Colour	Clamp & Stud	Unit	Weight	Box/ Pallet	Drawing
25kV Vertical Line Posts											
553247	DTR 25kV Vertical Tie Top Line Post	DTR	Korea	551mm	12.5 Tie Top	Grey	Separate	Each	4.0kg	6/120	LPFN-25SK-M20
553891	DTR 25kV Vertical Tie Top Line Post (HP)	DTR	Korea	783mm	12.5 Tie Top	Grey	Separate	Each	4.5kg	6/120	LPFN-25SK-HP-M20
553115	DTR 25kV Vertical Clamp Top Line Post	DTR	Korea	516mm	12.5 Clamp Top	Grey	Separate	Each	4.5kg	6/120	LPV-25SK-M20
553905	DTR 25kV Vertical Clamp Top Line Post (HP)	DTR	Korea	783mm	12.5 Clamp Top	Grey	Separate	Each	5.0kg	6/120	LPV-25SK-HP-1-M20
553913	DTR 25kV Vertical Special Clamp Top Line Post	DTR	Korea	551mm	12.5 Clamp Top	Grey	Separate	Each	5.0kg	6/120	LPSC-25SK-M20
553921	DTR 25kV Vertical Special Clamp Top Line Post (HP)	DTR	Korea	783mm	12.5 Clamp Top	Grey	Separate	Each	5.5kg	6/120	LPSC-25SK-HP-M20
Part Number	Description	Brand	Origin	Conductor Range	Length	Width	Construction	Unit	Weight	Box Qty	Drawing
Clamp options for DTR 25kV Line Posts (sold separately)											
553727	DTR 13-27mm Trunnion Clamp	DTR	Korea	13-27mm	135mm	98mm	Aluminium	Each	650g	6	DTR-ATC-106
461792	AX 10-38mm Trunnion Clamp	AX	NZ	10-38mm	127mm	98mm	Aluminium	Each	450g	12	D330-0501
Part Number	Description	Brand	Origin	Length	Diameter	Fixings	Unit	Weight	Box/ Pallet	Drawing	
Stud options for DTR 25kV Line Posts (sold separately)											
553662	DTR 48mm Line Post Stud	DTR	Korea	48mm	M20	FW/SW/FN	Each	300g	96	STD48M20	
553581	DTR 160mm Line Post Stud	DTR	Korea	160mm	M20	FW/SW/FN	Each	700g	72	STD160M20	
553697	DTR 200mm Line Post Stud	DTR	Korea	200mm	M20	FW/SW/FN	Each	850g	48	STD200M20	
Gain Bases for DTR 25kV Line Posts (sold separately)											
553174	DTR Vertical Gain Base	DTR	Korea	300mm			Each	4.5kg	6/60	DTR-GBV	

NZI 22kV LINE POSTS (Tie Top & Clamp Top)



22/490W32



22/630W32



22/490VC

22kV PORCELAIN LINE POST INSULATORS (TIE TOP & CLAMP TOP)

Part Number	Description	Brand	Origin	Creepage kN	Top	Groove	Glaze	Stud	Unit	Weight	Box/ Pallet	Drawing
22kV Tie Top Line Posts												
464619	NZI 22kV 490W32 Line Post	NZI	NZ	490mm	18	Tie Top	32mm	Grey M20	Each	9.0kg	1/40	D632-0573
464368	NZI 22kV 630W32 Ultra Premium Line Post	NZI	NZ	630mm	17.5	Tie Top	32mm	Grey M20	Each	12.4kg	1/40	D632-0563

Part Number	Description	Brand	Origin	Creepage kN	Top	Clamp	Glaze	Stud	Unit	Weight	Box/ Pallet	Drawing
22kV Vertical Clamp Line Post												
465321	NZI 22kV 490VC Line Post	NZI	NZ	490mm	12	Cap & Pintle	Separate	Grey M20	Each	14.0kg	1/40	D724-0527

Part Number	Description	Brand	Origin	Conductor Range	Length	Width	Construction	Unit	Weight	Box Qty	Drawing
Clamp options for 22/490VC (sold separately)											
461792	AX 10-38mm Trunnion Clamp	AX	NZ	10-38mm	127mm	98mm	Aluminium	Each	450g	12	D330-0501
553727	DTR 13-27mm Trunnion Clamp	DTR	Korea	13-27mm	135mm	98mm	Aluminium	Each	650g	6	DTR-ATC-106



33kV PORCELAIN PIN-TYPE INSULATORS (TIE TOP)

Part Number	Description	Brand	Origin	Creepage	Top	Groove	Colour	Thread	Unit	Weight	Box/ Pallet	Drawing
33kV Pin-Type Tie Top												
112526	NZI 3370	NZI	NZ	500mm	Tie Top	32mm	Grey	BS Large Steel Head	Each	5.2kg	3/96	D327-0503
115029	NZI 33/920	NZI	NZ	920mm	Tie Top	32mm	Grey	BS Large Steel Head	Each	16.2kg	1/32	D718-0503
44kV Pin-Type Tie Top												
111376	NZI 4490	NZI	NZ	665mm	Tie Top	38mm	Grey	BS Large Steel Head	Each	9.5kg	3/45	D343-0504
Part Number	Description	Brand	Origin	Length	Strength	Diameter	Head	Thread	Unit	Weight	Box/ Pallet	Drawing
Spindle for all three 33kV Insulators												
540463	AX R31 Steel Spindle	AX	China	305/178mm	10kN	M22	Steel	BS Large Steel Head	Each	2.9kg	6/288	D374-2023
Shorter Spindle option for 3370 only												
540706	AX R29 Steel Spindle	AX	UK	230/152mm	10kN	M22	Steel	BS Large Steel Head	Each	1.9kg	6/240	D374-2110

NZI 33kV LINE POSTS Tie Top



Longer 205mm Stud now on all NZI 33kV Vertical Posts



1/Box



33/915W32



33/915W40



33/955W32 Ultra Premium

33kV PORCELAIN LINE POST INSULATORS (TIE TOP)

Part Number	Description	Brand	Origin	Creepage	Top	Groove	kN	Stud	Glaze	Unit	Weight	Box/ Pallet	Drawing
33kV Tie Top Line Posts													
464570	NZI 33kV 915W32 Line Post	NZI	NZ	915mm	Tie Top	32mm	13.5	205mm M20	Grey	Each	15.4kg	1/40	D632-0570
464562	NZI 33kV 915W40 Line Post	NZI	NZ	915mm	Tie Top	40mm	13.5	205mm M20	Grey	Each	15.4kg	1/40	D632-0571
33kV Ultra Premium Tie Top Line Post													
464376	NZI 33kV 955W32 Line Post	NZI	NZ	955mm	Tie Top	32mm	13	205mm M20	Grey	Each	17.4kg	1/40	D632-0562





33kV PORCELAIN PIN-TYPE INSULATORS (CLAMP TOP)

Part Number	Description	Brand	Origin	Creepage Top	Clamp	Glaze	Thread	Unit	Weight	Box/Pallet	Drawing	
33kV Pin-Type Clamp Top												
112550	NZI 3372	NZI	NZ	510mm	Cap & Pintle	Separate	Grey	BS Large Steel Head	Each	8.2kg	2/32	D347-0504
44kV Pin-Type Clamp Top												
111414	NZI 4492	NZI	NZ	635mm	Cap & Pintle	Separate	Grey	BS Large Steel Head	Each	14.1kg	1/32	D341-0506

Part Number	Description	Brand	Origin	Conductor Range	Length	Width	Construction	Unit	Weight	Box Qty	Drawing
Clamp for 3372 & 4492 (sold separately)											
465283	AX 10-38mm Special Clamp	AX	NZ	10-38mm	127mm	98mm	Aluminium	Each	450g	12	D330-0503

Part Number	Description	Brand	Origin	Length	Strength	Diameter	Head	Thread	Unit	Weight	Box/Pallet	Drawing
Spindle for both Insulators												
540463	AX R31 Steel Spindle	AX	China	305/178mm	10kN	M22	Steel	BS Large Steel Head	Each	2.9kg	6/288	D374-2023
Shorter Spindle option for 3372 only												
540706	AX R29 Steel Spindle	AX	UK	230/152mm	10kN	M22	Steel	BS Large Steel Head	Each	1.9kg	6/240	D374-2110

NZI 33kV LINE POSTS Clamp Top



33kV PORCELAIN LINE POST INSULATORS (CLAMP TOP)

Part Number	Description	Brand	Origin	Creepage	kN	Top	Clamp	Glaze	Stud	Unit	Weight	Box/ Pallet	Drawing
33kV Vertical Clamp Line Post													
464597	NZI 33kV 940VC Line Post	NZI	NZ	940mm	10	Cap & Pintle	Separate	Grey	205mm M20	Each	15.5kg	1/32	D724-0524
465836	NZI 33kV 1075VC Line Post	NZI	NZ	1075mm	10	Cap & Pintle	Separate	Grey	205mm M20	Each	16.5kg	1/32	D724-0530

Part Number	Description	Brand	Origin	Creepage	kN	Top	Clamp	Glaze	Stud	Unit	Weight	Box/ Pallet	Drawing
33kV Horizontal Clamp Line Post													
465208	NZI 33kV 995HC Line Post	NZI	NZ	995mm	12.5	Cap & Pintle	Separate	Grey	Separate	Each	21.0kg	1/32	D725-0514

Part Number	Description	Brand	Origin	Conductor Range	Length	Width	Construction	Unit	Weight	Box Qty	Drawing
Clamp options for 33kV Line Posts (sold separately)											
461792	AX 10-38mm Trunion Clamp	AX	NZ	10-38mm	127mm	98mm	Aluminium	Each	450g	12	D330-0501
553727	DTR 13-27mm Trunion Clamp	DTR	Korea	13-27mm	135mm	98mm	Aluminium	Each	650g	6	DTR-ATC-106

Part Number	Description	Brand	Origin	Length	Diameter	Fixings	Unit	Weight	Box Qty	Drawing
Stud options for 33/995HC (sold separately)										
465291	AX 45mm Line Post Stud	AX	NZ	45mm	M20	SW/FN	Each	400g	24	D330-2013
465305	AX 160mm Line Post Stud	AX	NZ	160mm	M20	FW/SW/FN/HN	Each	710g	18	D330-2022
465313	AX 205mm Line Post Stud	AX	NZ	205mm	M20	FW/SW/FN/HN	Each	800g	12	D330-2059



DTR 35kV Clamp Top
(clamp sold separately)



DTR 35kV Tie Top



35kV Special Clamp Top



DTR Clamp

35kV POLYMER LINE POST INSULATORS (TIE TOP & CLAMP TOP)

Part Number	Description	Brand	Origin	Creepage kN	Top	Colour	Clamp & Stud	Unit	Weight	Box/ Drawing Pallet	
35kV Vertical Line Posts											
553255	DTR 35kV Vertical Tie Top Line Post	DTR	Korea	648mm	12.5 Tie Top	Grey	Separate	Each	4.5kg	6/120 LPFN-35SK-M20	
553948	DTR 35kV Vertical Tie Top Line Post (HP)	DTR	Korea	1090mm	12.5 Tie Top	Grey	Separate	Each	5.0kg	6/120 LPFN-35SK-HP-M20	
553131	DTR 35kV Vertical Clamp Top Line Post	DTR	Korea	613mm	12.5 Clamp Top	Grey	Separate	Each	5.0kg	6/120 DTR-LPV-35SK-NZI	
553956	DTR 35kV Vertical Clamp Top Line Post (HP)	DTR	Korea	1090mm	12.5 Clamp Top	Grey	Separate	Each	5.5kg	6/120 LPV-35SK-HP-1-M20	
553964	DTR 35kV Vertical Special Clamp Top Line Post	DTR	Korea	648mm	12.5 Clamp Top	Grey	Separate	Each	5.5kg	6/120 LPSC-35SK-M20	
553972	DTR 35kV Vertical Special Clamp Top Line Post (HP)	DTR	Korea	1090mm	12.5 Clamp Top	Grey	Separate	Each	6.0kg	6/120 LPSC-35SK-HP-M20	
Part Number	Description	Brand	Origin	Conductor Range	Length	Width	Construction	Unit	Weight	Box Qty	Drawing
Clamp options for DTR 35kV Line Posts (sold separately)											
553727	DTR 13-27mm Trunnion Clamp	DTR	Korea	13-27mm	135mm	98mm	Aluminium	Each	650g	6	DTR-ATC-106
461792	AX 10-38mm Trunnion Clamp	AX	NZ	10-38mm	127mm	98mm	Aluminium	Each	450g	12	D330-0501
Part Number	Description	Brand	Origin	Length	Diameter	Fixings	Unit	Weight	Box/ Pallet	Drawing	
Stud options for DTR 35kV Line Posts (sold separately)											
553662	DTR 48mm Line Post Stud	DTR	Korea	48mm	M20	FW/SW/FN	Each	300g	96	STD48M20	
553581	DTR 160mm Line Post Stud	DTR	Korea	160mm	M20	FW/SW/FN	Each	700g	72	STD160M20	
553697	DTR 200mm Line Post Stud	DTR	Korea	200mm	M20	FW/SW/FN	Each	850g	48	STD200M20	
Gain Bases for DTR 35kV Line Posts (sold separately)											
553174	DTR Vertical Gain Base	DTR	Korea	300mm			Each	4.5kg	6/60	DTR-GBV	

DTR 46kV LINE POSTS (Tie Top & Clamp Top)



46kV POLYMER LINE POST INSULATORS (TIE TOP & CLAMP TOP)

Part Number	Description	Brand	Origin	Creepage	kN	Top	Colour	Clamp & Stud	Unit	Weight	Box/ Drawing Pallet
46kV Vertical Line Posts											
553980	DTR 46kV Vertical Tie Top Line Post	DTR	Korea	1195mm	12.5	Tie Top	Grey	Separate	Each	6.5kg	1/60 LPFN-46SK-M20
553999	DTR 46kV Vertical Tie Top Line Post (HP)	DTR	Korea	1703mm	12.5	Tie Top	Grey	Separate	Each	6.5kg	1/60 LPFN-46SK-HP-M20
554006	DTR 46kV Vertical Clamp Top Line Post	DTR	Korea	1195mm	12.5	Clamp Top	Grey	Separate	Each	7.0kg	1/60 LPV-46SK-M20
554014	DTR 46kV Vertical Clamp Top Line Post (HP)	DTR	Korea	1703mm	12.5	Clamp Top	Grey	Separate	Each	7.0kg	1/60 LPV-46SK-HP-M20
554022	DTR 46kV Vertical Special Clamp Top Line Post	DTR	Korea	1195mm	12.5	Clamp Top	Grey	Separate	Each	7.0kg	1/60 LPSC-46SK-M20
554030	DTR 46kV Vertical Special Clamp Top Line Post (HP)	DTR	Korea	1703mm	12.5	Clamp Top	Grey	Separate	Each	7.5kg	1/60 LPSC-46SK-HP-M20
Part Number	Description	Brand	Origin	Conductor Range	Length	Width	Construction	Unit	Weight	Box Qty	Drawing
Clamp options for DTR 46kV Line Posts (sold separately)											
553727	DTR 13-27mm Trunnion Clamp	DTR	Korea	13-27mm	135mm	98mm	Aluminium	Each	650g	6	DTR-ATC-106
461792	AX 10-38mm Trunnion Clamp	AX	NZ	10-38mm	127mm	98mm	Aluminium	Each	450g	12	D330-0501
Part Number	Description	Brand	Origin	Length	Diameter	Fixings	Unit	Weight	Box/ Pallet	Drawing	
Stud options for DTR 46kV Line Posts (sold separately)											
553662	DTR 48mm Line Post Stud	DTR	Korea	48mm	M20	FW/SW/FN	Each	300g	96	STD48M20	
553581	DTR 160mm Line Post Stud	DTR	Korea	160mm	M20	FW/SW/FN	Each	700g	72	STD160M20	
553697	DTR 200mm Line Post Stud	DTR	Korea	200mm	M20	FW/SW/FN	Each	850g	48	STD200M20	
Gain Bases for DTR 46kV Line Posts (sold separately)											
553174	DTR Vertical Gain Base	DTR	Korea	300mm			Each	4.5kg	6/60	DTR-GBV	



69kV POLYMER LINE POST INSULATORS (TIE TOP & CLAMP TOP)

Part Number	Description	Brand	Origin	Creepage kN	Top	Colour	Clamp & Stud	Unit	Weight	Box/ Pallet	Drawing
69kV Vertical Line Posts											
553166	DTR 69kV Vertical Tie Top Line Post	DTR	Korea	1387mm	11.0 Tie Top	Grey	Separate	Each	7.0kg	1/60	DTR-LPFN-69SK-NZI
554049	DTR 69kV Vertical Tie Top Line Post (HP)	DTR	Korea	2330mm	12.5 Tie Top	Grey	Separate	Each	7.5kg	1/60	LPFN-69SK-HP-M20
553212	DTR 69kV Vertical Clamp Top Line Post	DTR	Korea	1387mm	11.0 Clamp Top	Grey	Separate	Each	8.0kg	1/60	DTR-LPV69SK-NZI
554057	DTR 69kV Vertical Clamp Top Line Post (HP)	DTR	Korea	2330mm	12.5 Clamp Top	Grey	Separate	Each	8.0kg	1/60	LPV-69SK-HP-1-M20
554065	DTR 69kV Vertical Special Clamp Top Line Post	DTR	Korea	1387mm	12.5 Clamp Top	Grey	Separate	Each	8.0kg	1/60	LPSC-69SK-M20
554073	DTR 69kV Vertical Special Clamp Top Line Post (HP)	DTR	Korea	2330mm	12.5 Clamp Top	Grey	Separate	Each	8.5kg	1/60	LPSC-69SK-HP-M20

Part Number	Description	Brand	Origin	Conductor Range	Length	Width	Construction	Unit	Weight	Box Qty	Drawing
Clamp options for DTR 69kV Line Posts (sold separately)											
553727	DTR 13-27mm Trunnion Clamp	DTR	Korea	13-27mm	135mm	98mm	Aluminium	Each	650g	6	DTR-ATC-106
461792	AX 10-38mm Trunnion Clamp	AX	NZ	10-38mm	127mm	98mm	Aluminium	Each	450g	12	D330-0501

Part Number	Description	Brand	Origin	Length	Diameter	Fixings	Unit	Weight	Box/ Pallet	Drawing
Stud options for DTR 69kV Line Posts (sold separately)										
553662	DTR 48mm Line Post Stud	DTR	Korea	48mm	M20	FW/SW/FN	Each	300g	96	STD48M20
553581	DTR 160mm Line Post Stud	DTR	Korea	160mm	M20	FW/SW/FN	Each	700g	72	STD160M20
553697	DTR 200mm Line Post Stud	DTR	Korea	200mm	M20	FW/SW/FN	Each	850g	48	STD200M20
Gain Bases for DTR 69kV Line Posts (sold separately)										
553174	DTR Vertical Gain Base	DTR	Korea	300mm			Each	4.5kg	6/60	DTR-GBV

NZI 69kV & 110kV LINE POSTS Clamp Top



Base Cap for both Vertical and Horizontal

Vertical Top Cap



110kV 2850HC Horizontal Line Post (clamp supplied separately)

110kV PORCELAIN LINE POST INSULATORS (CLAMP TOP)

Part Number	Description	Brand	Origin	Creepage	Strength	Top	Glaze	Fixing & Clamp	Unit	Weight	Box Qty	Drawing
66kV Vertical Clamp Top Post												
460419	NZI 66kV 1830VC Line Post	NZI	NZ	1830mm	10kN	Cap & Pintle	Grey	Separate	Each	37kg	1	D724-0518
66kV Horizontal Clamp Top Post												
460451	NZI 66kV 1830HC Line Post	NZI	NZ	1830mm	10kN	Cap & Pintle	Grey	Separate	Each	37kg	1	D725-0523
110kV Vertical Clamp Top Post												
460222	NZI 110kV 2850VC Line Post	NZI	NZ	2850mm	10kN	Cap & Pintle	Grey	Separate	Each	60kg	1	D724-0519
110kV Horizontal Clamp Top Post												
460265	NZI 110kV 2850HC Line Post	NZI	NZ	2850mm	10kN	Cap & Pintle	Grey	Separate	Each	60kg	1	D725-0524
Part Number	Description	Brand	Origin	Conductor Range	Length	Width	Construction	Unit	Weight	Box Qty	Drawing	
Clamp for 66kV & 110kV Line Posts (sold separately)												
461792	AX 10-38mm Trunnion Clamp	AX	NZ	10-38mm	127mm	98mm	Aluminium	Each	450g	12	D330-0501	



T-Insert 12kV



12kV



22kV



36kV



T-Insert



External Cap

12-36kV PORCELAIN STANDOFF INSULATORS

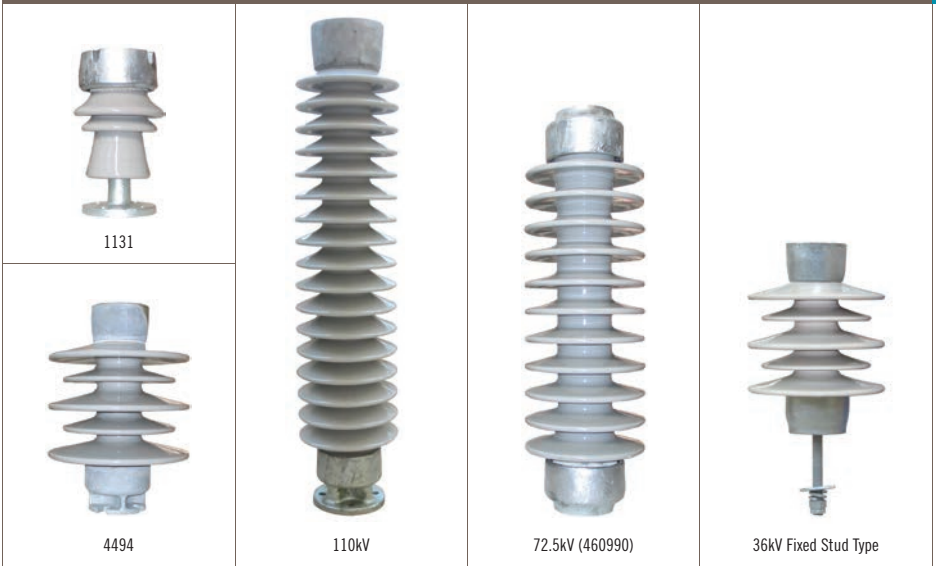
Part Number	Description	Brand	Origin	Creepage	Length	kN	End Fittings	Glaze	Unit	Weight	Box Qty	Drawing
T-Insert Standoff												
598263	NZI 12kV T-Insert	NZI	NZ	480mm	235mm	3.5	T Insert	Grey	Each	6.0kg	6	D412-0504
External Cap Standoffs												
598291	NZI 12kV Standoff	NZI	NZ	445mm	235mm	4	76CRS Caps	Grey	Each	5.9kg	4	D412-0529
598305	NZI 22kV Standoff	NZI	NZ	590mm	300mm	3	76CRS Caps	Grey	Each	6.8kg	3	D412-0531
598313	NZI 36kV Standoff	NZI	NZ	880mm	406mm	2	76CRS Caps	Grey	Each	9.0kg	3	D412-0527



TR208 25kV Station Post

15-220kV POLYMER STATION POST INSULATORS

Part Number	Description	Brand	Origin	Rated	Creepage	Length	kN	Sheds	Colour	Weight	Box Qty	Drawing
7.5kV Station Post												
554383	DTR TR202 7.5kV Station Post	DTR	Korea	7.5kV	300mm	190mm	8.9	3	Grey	3.2kg	6	SPB008-TR202-M3
15kV Station Post												
553263	DTR TR205 15kV Station Post	DTR	Korea	15kV	529mm	254mm	12.5	5	Grey	3.2kg	6	SPB015-TR205-M3
25kV Station Post												
553271	DTR TR208 25kV Station Post	DTR	Korea	25kV	824mm	357mm	12.5	7	Grey	4.1kg	6	SPB025-TR208-M3
35kV Station Post												
553298	DTR TR210 35kV Station Post	DTR	Korea	35kV	1117mm	457mm	12.5	9	Grey	4.5kg	6	SPB035-TR210-M3
46kV Station Post												
553301	DTR TR214 46kV Station Post	DTR	Korea	46kV	1436mm	559mm	12.5	11	Grey	5.5kg	6	SPB046-TR214-M3
69kV Station Post												
553328	DTR TR216 69kV Station Post	DTR	Korea	69kV	1884mm	762mm	12	15	Grey	7.7kg	6	SPB069-TR216-M3
150kV Station Post												
553352	DTR TR291 150kV Station Post	DTR	Korea	150kV	4128mm	1704mm	8	24	Grey	20.4kg	1	DTR-TR291SK-HP-M
220kV Station Post												
553360	DTR TR312 220kV Station Post	DTR	Korea	220kV	5854mm	2336mm	5.5	34	Grey	30.2kg	1	DTR-TR312SK-M



11-72.5kV PORCELAIN STATION POST INSULATORS

Part Number	Description	Brand	Origin	Creepage Length	kN	Caps	Construction	Glaze	Weight	Box/ Pallet	Drawing
11kV Station Post											
104744	NZI 1131 11kV Station Post	NZI	NZ	265mm	228mm	6	76PCD	1 Piece	Grey	4.4kg	6/120 D712-0501
36kV Station Posts											
460001	NZI 4494 36kV Station Post	NZI	NZ	860mm	381mm	12	76PCD	1 Piece	Grey	20kg	1/32 D687-0547
460028	NZI 4494 Inverted 36kV Station Post	NZI	NZ	860mm	381mm	12	76PCD	1 Piece	Grey	20kg	1/32 D687-0593
462489	NZI 36kV Station Post	NZI	NZ	950mm	475mm	5	76PCD	1 Piece	Grey	16kg	1/40 D687-0531
465550	NZI 36kV Station Post Fixed Stud Type	NZI	NZ	860mm	530mm	12	76PCD	1 Piece	Grey	16.5kg	1/20 D688-0502
44kV Station Post											
113514	NZI 4497 HD 44kV Station Post	NZI	NZ	813mm	381mm	11	76PCD	1 Piece	Grey	16kg	1/27 D400-0502
72.5kV Station Posts											
460990	NZI 72.5kV Station Post	NZI	NZ	1600mm	762mm	8	76PCD	1 Piece	Grey	39kg	1/20 D687-0588
460737	NZI 72.5kV Station Post (Pedestal Mount)	NZI	NZ	1880mm	770mm	7	127PCD	1 Piece	Grey	40kg	1/20 D687-0590
110kV Station Posts											
460168	NZI 110kV Station Post (Pedestal Mount)	NZI	NZ	2780mm	1104mm	4.5	127PCD	1 Piece	Grey	50kg	1/20 D687-0570



5/8" Cordeau



R23



NEMA Nylon



NEMA Lead

GALVANISED STEEL SPINDLES FOR PIN-TYPE INSULATORS

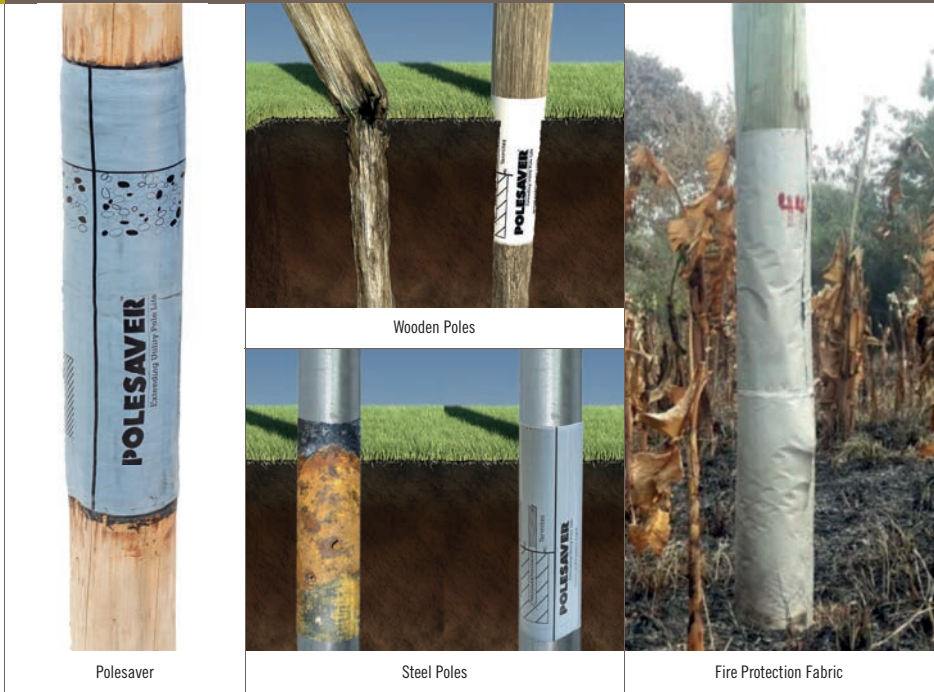
Part Number	Description	Brand	Origin	Length	Diameter	kN	Head	Thread	Unit	Weight	Box/ Pallet	Drawing
Spindle for 510, 511 & 821												
540358	AX 5/8 Cordeau Steel Head	AX	China	118/147mm	M16	3.3	Steel	5/8" Cordeau	Each	670g	30/1200	D374-2009
Spindles for 1130W												
536164	AX Nema 1" Nylon Head	AX	China	152/146mm	M20	6	Nylon	1 Inch SLHT	Each	1.0kg	12/480	D374-2134
536326	AX Nema 1" Lead Head	AX	China	152/146mm	M20	6	Lead	1 Inch SLHT	Each	1.1kg	12/480	D374-2118
541532	AX Extended Lead Head	AX	China	185/135mm	M20	6	Lead	1 Inch SLHT	Each	1.3kg	12/480	D374-2120
Spindle for 1132T												
540528	AX R23 Steel Head	AX	UK	170/130mm	M18	10	Steel	BS Small Steel Head	Each	1.1kg	12/240	D374-2027



GALVANISED STEEL SPINDLES FOR PIN-TYPE INSULATORS

Part Number	Description	Brand	Origin	Length	Diameter	kN	Head	Thread	Unit	Weight	Box/ Drawing Pallet
Spindles for ALP22/450											
538213	AX M20 Pattern C Lead Head	AX	China	200/185mm	M20	10	Lead	Pattern C	Each	2.2kg	6/240 D374-2084
538205	AX M24 Pattern C Lead Head	AX	China	200/185mm	M24	11	Lead	Pattern C	Each	2.4kg	6/240 D374-2085
Spindle for 1540W, 3370, 33/920, 4490, 3372 & 4492											
540463	AX R31 Steel Head	AX	China	305/178mm	M22	10	Steel	BS Large Steel Head	Each	2.9kg	6/288 D374-2023
Shorter Spindle option for 1540W, 3370 & 3372 only											
540706	AX R29 Steel Head	AX	UK	230/152mm	M22	10	Steel	BS Large Steel Head	Each	1.9kg	6/240 D374-2110

POLESAVER SLEEVES and FIRE PROTECTION FABRIC



Polesaver

Wooden Poles

Steel Poles

Fire Protection Fabric

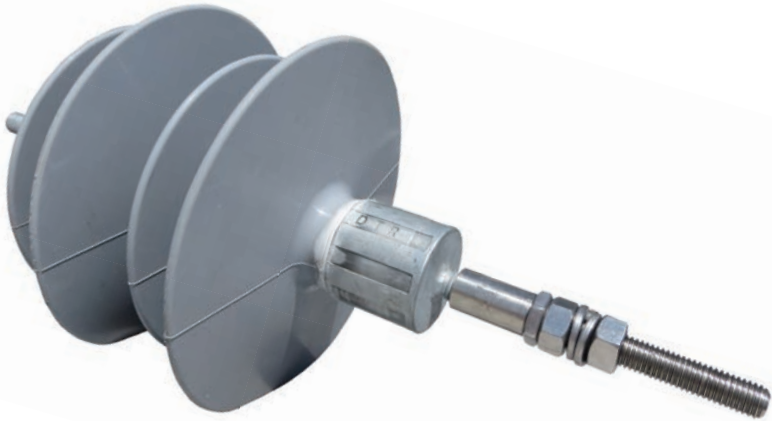
POLESAVER SLEEVES AND FIRE PROTECTION FABRIC

Part Number	Description	Product Code	To Fit Pole Diameter (mm)	To Fit Pole Diameter (in)	Pack Size
Polesaver Sleeves					
570001	150mm Ø Polesaver Sleeve	U15	150	6	50
570028	200mm Ø Polesaver Sleeve	U20	200	8	50
570036	250mm Ø Polesaver Sleeve	U25	250	10	50
570044	300mm Ø Polesaver Sleeve	U30	300	12	50
570052	350mm Ø Polesaver Sleeve	U35	350	14	40
570060	400mm Ø Polesaver Sleeve	U40	400	16	25
570079	450mm Ø Polesaver Sleeve	U45	450	18	25
570087	500mm Ø Polesaver Sleeve	U50	500	20	25
570095	550mm Ø Polesaver Sleeve	U55	550	22	25
570109	600mm Ø Polesaver Sleeve	U60	600	24	25
Fire Protection Fabric					
Part Number	Description	Product Code			Pack Quantity
570133	Fire protection fabric 1.0 m x 25m roll	FP1			1





Avon Crucifix Bracket



DTR Crucifix Standoff

GALVANISED STEEL CRUCIFIX BRACKET & POLYMER STANDOFF

Part Number	Description	Brand	Origin	Length	Width	Thick	Holes	Unit	Weight	Pack Qty	Drawing
Crucifix Bracket (HDG to 4680:2006)											
537055	Avon 11kV Crucifix Bracket only	Avon	NZ	920mm	340mm	6mm	14mm	Each	4.8kg	5	AA18206
Part Number	Description	Brand	Origin	Rated	Creepage Length	Stud	Colour	Unit	Weight	Box/Pallet	Drawing
Polymer Standoff for 11kV Crucifix (IEC 61109)											
553069	DTR 15kV Crucifix Standoff	DTR	Korea	15kV	550mm	328mm	M12	Grey	Each	1.8kg	6/300 ISA3-0550-GSS



Screw Anchors

Crossarm Braces



Eye Bolts



GALVANISED STEEL LINE HARDWARE

Part Number	Description	Brand	Origin	Length	Shaft	Helix Dia	Eye ID	Unit	Weight	Pack Qty	Drawing
1.8mm Screw Anchors											
536512	Avon 1.8/20/175 Screw Anchor	Avon	NZ	1.8m	M20	175mm	60mm	Each	6.0kg	1	AA05003
536520	Avon 1.8/24-2/175 Double Helix Anchor	Avon	NZ	1.8m	M20	175mm	60mm	Each	9.0kg	1	AA05007
536539	Avon 1.8/24/210 Screw Anchor	Avon	NZ	1.8m	M24	210mm	60mm	Each	8.9kg	1	AA05004
536547	Avon 1.8/32/250 Screw Anchor	Avon	NZ	1.8m	M32	250mm	60mm	Each	17.0kg	1	AA05006

Part Number	Description	Brand	Origin	Length	Width	Thick	Eye ID	Unit	Weight	Bag Qty	Drawing
M16 Eye Bolts											
537144	Avon 20x200mm Eye Bolt + M16 Nut	Avon	NZ	200mm	50mm	14.7mm	20mm	Each	490g	10	AA02002
537152	Avon 32x200mm Eye Bolt + M16 Nut	Avon	NZ	200mm	62mm	14.7mm	32mm	Each	500g	10	AA02011
537160	Avon 20x250mm Eye Bolt + M16 Nut	Avon	NZ	250mm	50mm	14.7mm	20mm	Each	620g	10	AA02004

Part Number	Description	Brand	Origin	Length	Width	Thick	Holes	Unit	Weight	Bag Qty	Drawing
5mm Crossarm Braces											
536555	Avon 610x30mm Crossarm Brace	Avon	NZ	610mm	30mm	5mm	14mm	Each	720g	20	AA13009
537179	Avon 660x30mm Crossarm Brace	Avon	NZ	660mm	30mm	5mm	14mm	Each	780g	20	AA13010
536563	Avon 700x30mm Crossarm Brace	Avon	NZ	700mm	30mm	5mm	14mm	Each	830g	20	AA13011
537187	Avon 763x30mm Crossarm Brace	Avon	NZ	763mm	30mm	5mm	14mm	Each	900g	20	AA13013
536571	Avon 800x30mm Crossarm Brace	Avon	NZ	800mm	30mm	5mm	14mm	Each	940g	20	AA13015
536598	Avon 900x30mm Crossarm Brace	Avon	NZ	900mm	30mm	5mm	14mm	Each	1.1kg	20	AA13017



Black (for copper)



White (for aluminium)

CABLE OXIDE REMOVAL BRUSHES

Part Number	Description	Brand	Origin	Colour	Length	Diameter	Unit	Weight	Box Qty
For Cleaning Copper Conductor prior to crimping									
523054	Fulton ORB-1 Oxide Film Removal Brush	Fulton	Australia	Black	130mm	50mm	Each	140g	15
For Cleaning Aluminium Conductor prior to crimping									
523062	Fulton ORB-2 Oxide Film Removal Brush	Fulton	Australia	White	130mm	50mm	Each	140g	15



AAR 0620



AAR 0660



AAR 1050



AAR 1400

PAYER ALUMINIUM ARMOUR RODS (RH LAY)

Part Number	Description	Brand	Origin	Conductor	Colour	Diameter Range	Wires	Unit	Box Qty
Aluminium Armour Rods									
560006	AAR 0620 Armour Rods	Payer	Canada	Squirrel/Namu/Boron	Orange	6.2 - 6.59mm	7x3.71mm	Each	40
560014	AAR 0660 Armour Rods	Payer	Canada	Flounder	Brown	6.6 - 6.94mm	7x3.71mm	Each	40
560286	AAR 0695 Armour Rods	Payer	Canada	Gopher/Poko	Yellow	6.95 - 7.34mm	8x3.71mm	Each	40
560294	AAR 0880 Armour Rods	Payer	Canada	Ferret/Kutu	Red	8.8 - 9.29mm	9x4.24mm	Each	25
560022	AAR 1050 Armour Rods	Payer	Canada	Mink/Rango	Black	10.5 - 11.09mm	10x4.24mm	Each	20
560308	AAR 1245 Armour Rods	Payer	Canada	Wasp	Green	12.45 - 13.24mm	11x4.24mm	Each	20
560030	AAR 1400 Armour Rods	Payer	Canada	Dog/Weke/Iodine	Blue	14.0 - 14.89mm	11x4.24mm	Each	15
560316	AAR 1790 Armour Rods	Payer	Canada	Wolf	Red	17.9 - 18.8mm	12x5.18mm	Each	10



Genuine Payer of Canada

PAYER ALUMINIUM LINE GUARDS & LINE SPLICES (RH LAY)

Part Number	Description	Brand	Origin	Conductor	Colour	Diameter Range	3.07mm Wires	Unit	Box Qty
Aluminium Line Guards									
560626	ALG 0620 Line Guard	Payer	Canada	Squirrel/Namu	Orange	6.2 - 6.59mm	8	Each	50
560634	ALG 0695 Line Guard	Payer	Canada	Gopher/Poko	Yellow	6.95 - 7.34mm	9	Each	50
560642	ALG 0735 Line Guard	Payer	Canada	Chlorine	Blue	7.35 - 7.84mm	9	Each	50
560650	ALG 0880 Line Guard	Payer	Canada	Ferret/Kutu	Red	8.8 - 9.29mm	10	Each	40
560669	ALG 1050 Line Guard	Payer	Canada	Mink/Rango	Black	10.5 - 11.09mm	13	Each	30
560677	ALG 1180 Line Guard	Payer	Canada	Raccoon	White	11.8 - 12.44mm	13	Each	30
560685	ALG 1245 Line Guard	Payer	Canada	Wasp	Green	12.45 - 13.24mm	13	Each	30
560693	ALG 1400 Line Guard	Payer	Canada	Dog/Weke	Blue	14.0 - 14.89	15	Each	25
560707	ALG 1880 Line Guard	Payer	Canada	Jaguar	White	18.8 - 20.14mm	17	Each	15
560715	ALG 2015 Line Guard	Payer	Canada	Cockroach	Red	20.15 - 21.34mm	18	Each	15
Aluminium Line Splices									
560499	ALS 0625 Line Splice	Payer	Canada	Squirrel/Namu	Orange	6.25 - 6.54mm	2x4	Each	50
560502	ALS 0655 Line Splice	Payer	Canada	Flounder	Brown	6.55 - 6.89mm	2x4	Each	50
560510	ALS 0690 Line Splice	Payer	Canada	Gopher/Poko	Yellow	6.9 - 7.14mm	3x3	Each	40
560529	ALS 1015 Line Splice	Payer	Canada	Hake	Black	10.15 - 10.49mm	2x4+1x5	Each	40



ADE 0625



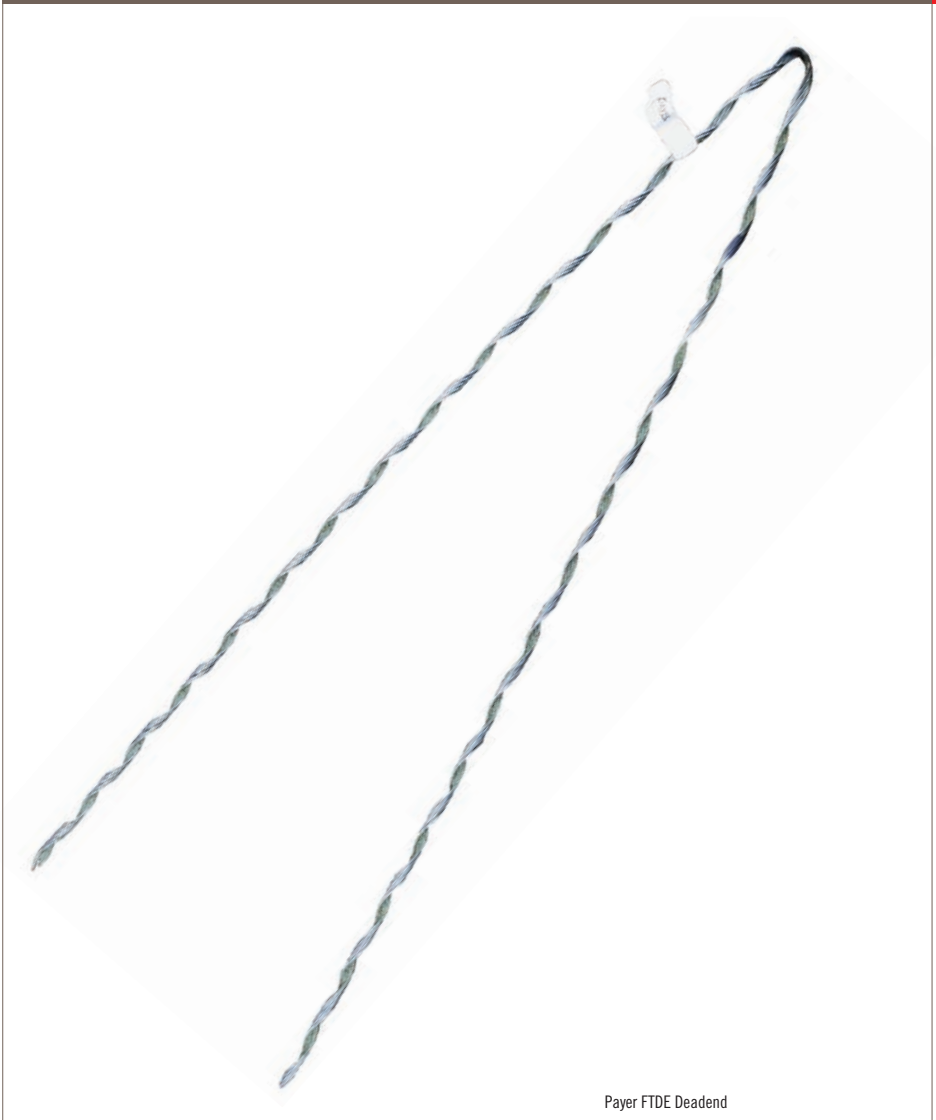
ADE 1080



ADE 1385

PAYER ALUMINIUM DEADENDS (RH LAY)

Part Number	Description	Brand	Origin	Conductor	Colour	Diameter Range	Unit	Box Qty
Aluminium Deadends								
560057	Payer ADE 0625 Deadend	Payer	Canada	Squirrel/Namu	Orange	6.25 - 6.54mm	Each	40
560049	Payer ADE 0690 Deadend	Payer	Canada	Gopher/Poko	Yellow	6.9 - 7.14mm	Each	40
560324	Payer ADE 0895 Deadend	Payer	Canada	Ferret/Kutu	Red	8.95 - 9.34mm	Each	50
560332	Payer ADE 0970 Deadend	Payer	Canada	Rabbit	Brown	9.7 - 10.14mm	Each	40
560073	Payer ADE 1080 Deadend	Payer	Canada	Mink/Rango	Black	10.8 - 11.3mm	Each	30
560340	Payer ADE 1130 Deadend	Payer	Canada	Grasshopper	Blue	11.3 - 11.74mm	Each	30
560359	Payer ADE 1225 Deadend	Payer	Canada	Raccoon	White	12.25 - 12.79mm	Each	25
560367	Payer ADE 1280 Deadend	Payer	Canada	Wasp/Beetle	Green	12.8 - 13.5mm	Each	25
560065	Payer ADE 1385 Deadend	Payer	Canada	Dog/Weke/Iodine	Blue	13.85 - 14.44mm	Each	20
560375	Payer ADE 1570 Deadend	Payer	Canada	Cricket	Orange	15.7 - 16.39mm	Each	15
560383	Payer ADE 1640 Deadend	Payer	Canada	Dingo/Weta	Brown	16.4 - 17.04mm	Each	10
560103	Payer ADE 1855 Deadend	Payer	Canada	Jaguar/Mata	White	18.55 - 19.29mm	Each	10
560391	Payer ADE 2100 Deadend	Payer	Canada	Cockroach	Red	21.0 - 21.41mm	Each	10
560405	Payer ADE 2255 Deadend	Payer	Canada	Butterfly	Green	22.55 - 24.33mm	Each	10



PAYER FULL TENSION GALV STEEL DEADENDS (RH LAY)

Part Number	Description	Brand	Origin	Conductor	Colour	Diameter	Unit	Box Qty
Single Piece Galv Steel Deadends								
560081	Payer FTDE Deadend	Payer	Canada	Flounder	Grey	6.71mm	Each	50
560618	Payer FTDE Deadend	Payer	Canada	Mink	Red	10.98mm	Each	20



LTDNE 0585



LTDNE 0735



LTDNE 0955

PAYER GALV STEEL LIMITED TENSION NEOPRENE DEADENDS (RH LAY)

Part Number	Description	Brand	Origin	Conductor	Colour	Diameter Range	Unit	Box Qty
Neoprene Deadends								
560197	LTNDE 0585 Deadend	Payer	Canada	Flounder	Green	5.85 - 7.34mm	Each	50
560111	LTNDE 0735 Deadend	Payer	Canada	Namu	Red	7.35 - 9.55mm	Each	50
560200	LTNDE 0955 Deadend	Payer	Canada	Ferret	Blue	9.55 - 11.35mm	Each	50
560138	LTNDE 1210 Deadend	Payer	Canada	Rango	Red	12.1 - 14.17mm	Each	25
560146	LTNDE 1485 Deadend	Payer	Canada	Beetle/Wasp/Weke	Black	14.85 - 16.63mm	Each	20
560413	LTNDE 1880 Deadend	Payer	Canada	Weta	Yellow	18.8 - 20.19mm	Each	20
560421	LTNDE 2200 Deadend	Payer	Canada	Butterfly	Blue	22.0 - 23.32mm	Each	15
560429	LTNDE 2500 Deadend	Payer	Canada	Goat/Centipede	Orange	25.0 - 26.67mm	Each	10

SGG 0595



SGG 1185

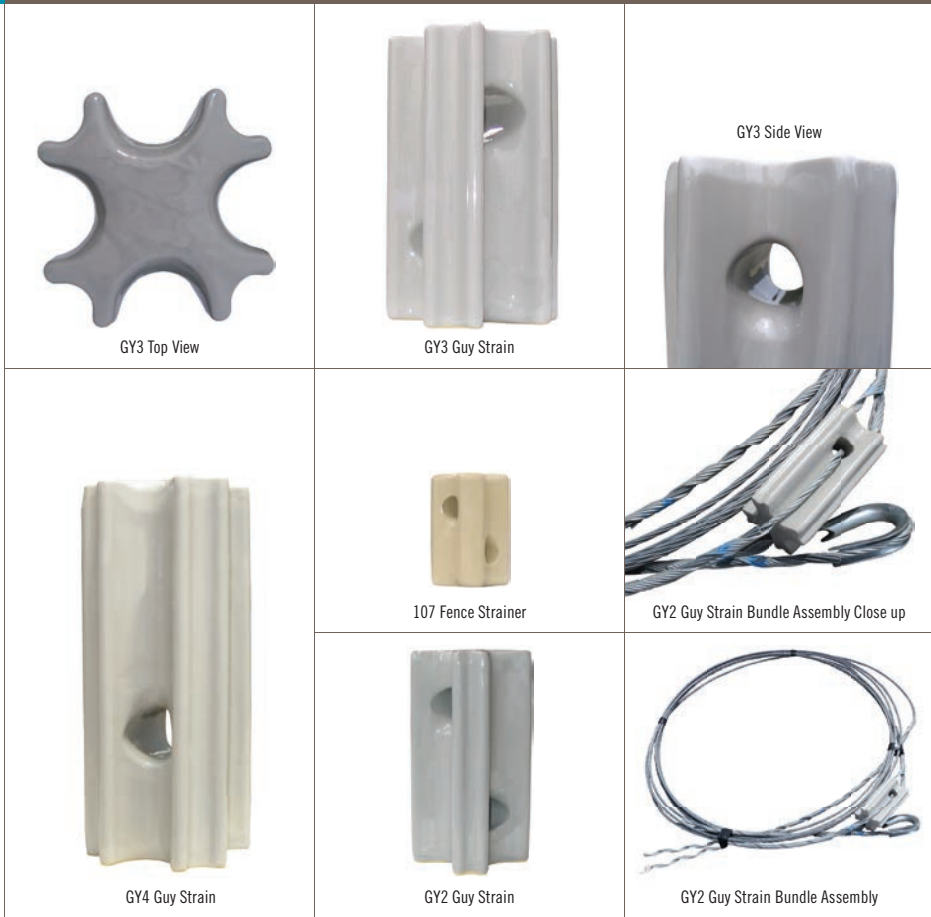


SGL 0930



PAYER GALV STEEL GUY GRIPS & GUY LOCKS (RH LAY)

Part No.	Description	Brand	Origin	Galv Steel	Colour	Diameter Range	Unit	Box Qty
Guy Grips								
560219	SGG 0485 Guy Grip	Payer	Canada	7/16	Black	4.85 - 5.04mm	Each	50
560154	SGG 0595 Guy Grip	Payer	Canada	7/14 SWG	Yellow	5.95 - 6.19mm	Each	50
560227	SGG 0765 Guy Grip	Payer	Canada	7/12	White	7.65 - 7.99mm	Each	50
560162	SGG 0895 Guy Grip	Payer	Canada	7/3.00	Red	8.95 - 9.29mm	Each	40
560235	SGG 0930 Guy Grip	Payer	Canada	7/3.15 & 1/19/1.9	Red	9.3 - 9.69mm	Each	40
560170	SGG 0970 Guy Grip	Payer	Canada	7/10 SWG	Green	9.7 - 10.04mm	Each	40
560251	SGG 1185 Guy Grip	Payer	Canada	7/4.00	Brown	11.85 - 12.19mm	Each	25
560456	SGG 1305 Guy Grip	Payer	Canada	19/12 SWG	White	13.05 - 13.49mm	Each	15
Guy Locks								
560464	SGL 0595 Guy Lock	Payer	Canada	7/14 SWG	Yellow	5.95 - 6.19mm	Each	150
560278	SGL 0765 Guy Lock	Payer	Canada	7/12 & 7.5mm	White	7.65 - 7.99mm	Each	50
560472	SGL 0895 Guy Lock	Payer	Canada	7/3.00	Red	8.95 - 9.29mm	Each	40
560189	SGL 0930 Guy Lock	Payer	Canada	7/3.15	Red	9.3 - 9.69mm	Each	20
560480	SGL 1185 Guy Lock	Payer	Canada	7/4.00	Brown	11.85 - 12.19mm	Each	20



PORCELAIN GUY STRAINS & FENCE STRAINER

Part Number	Description	Brand	Origin	Length	Wet Flashover	Failing Load	Glaze	Unit	Weight	Box/Pallet	Drawing
Guy Strains											
108197	NZI GY2 15kV Guy Strain	NZI	NZ	146mm	15kV	71kN	Grey	Each	1.2kg	18/720	S2289
108162	NZI GY3 20kV Guy Strain	NZI	NZ	216mm	30kV	222kN	Grey	Each	3.8kg	4/192	S2290
108170	NZI GY4 30kV Guy Strain	NZI	NZ	280mm	30kV	222kN	Grey	Each	5.7kg	4/168	S2291
Fence Strainer											
108014	NZI 107 Fence Strain	NZI	NZ	57mm	4kV	4.5kN	Clear	Each	135g	140	M1515
Guy Strain Bundle Assembly											
108669	NZI GY2 Guy Strain Bundle Assembly	NZI	NZ	18m				Each	7.5kg	40/40	

70kN Galv Steel Clevis



70kN Aluminium Clevis



HDG Thimble



Clevis Close Up



Aluminium Side Profile



Steel Side Profile



Polymer Strain Aluminium Bundle

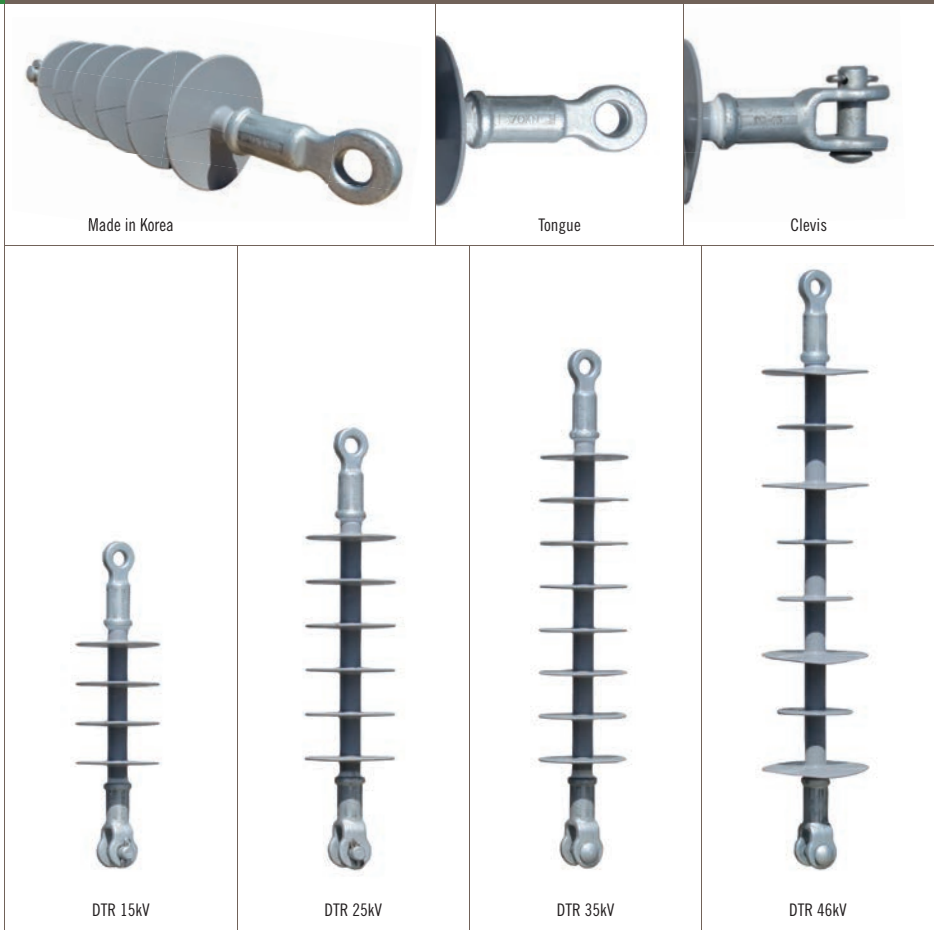


Polymer Strain Galv Steel Bundle

CLEVIS THIMBLES & POLYMER STRAIN BUNDLES

Part Number	Description	Brand	Origin	Strength	Length	Int Width	Loop	Unit	Weight	Box Qty	Drawing
Clevis Thimbles											
536342	AX Aluminium Clevis Thimble	AX	China	70kN	132mm	30mm	57mm	Each	470g	30	D374-2140
536393	AX Galv Steel Clevis Thimble	AX	China	70kN	146mm	25mm	57mm	Each	650g	30	D374-2142
HDG Thimble											
536407	AX 16mm Galv Thimble	AX	NZ		80mm	16mm	57mm	Each	100g	10	
Preassembled Polymer Strain Bundles											
553336	DTR 15kV Polymer Strain + AX Aluminium Clevis + Avon 32/200M16 Eye Bolt								2.1kg	10	
553344	DTR 15kV Polymer Strain + AX Galv Steel Clevis + Avon 32/200M16 Eye Bolt								2.3kg	10	

DTR Polymer STRAINS – 15/25/35/46kV



POLYMER STRAIN INSULATORS

Part Number	Description	Brand	Origin	Rated kN	End Fittings	Creepage Length	Sheds	Colour	Weight	Box/ Pallet	Drawing
Polymer Strains (IEC 61109)											
553018	DTR 15kV Polymer Strain	DTR	Korea	15kV	70 Tongue & Clevis	459	4	347	Grey	0.8kg	10/640 ISA7-0459-AGH
553751	DTR 15kV Polymer Strain	DTR	Korea	15kV	70 Eye & Eye	459	4	347	Grey	0.8kg	10/800 ISA7-0459-AGG
553026	DTR 25kV Polymer Strain	DTR	Korea	25kV	70 Tongue & Clevis	693	6	442	Grey	1.3kg	10/600 ISB7-0693-AGH
553034	DTR 35kV Polymer Strain	DTR	Korea	35kV	70 Tongue & Clevis	927	8	536	Grey	1.4kg	10/600 ISC7-0927-AGH
553603	DTR 46kV Polymer Strain	DTR	Korea	46kV	70 Tongue & Clevis	1070	8	644	Grey	1.8kg	8/224 ISC9-1070-CAB





69kV POLYMER STRAIN INSULATORS

Part Number	Description	Brand	Origin	Rated kN	End Fittings	Creepage (mm)	Sheds	Length (mm)	Colour	Weight	Box/ Pallet	Drawing
69kV Polymer Strains (IEC 61109)												
553700	DTR 69kV Polymer Strain	DTR	Korea	69kV	70 Tongue & Clevis	2205	13	864	Grey	2.9kg	1/144	ISD7-2205-BAB
553379	DTR 69kV L011745 Strain	DTR	Korea	69kV	120 Ball & Socket	2070	19	800	Grey	4.4kg	1	SCGL019-A6800
553395	DTR 69kV L011746Y Strain	DTR	Korea	69kV	120 Y Clevis & Eye	2070	19	821	Grey	4.9kg	1	SCGL019-A2800
553387	DTR 69kV L011746 Strain	DTR	Korea	69kV	120 Ball & Socket	2449	17	859	Grey	5.4kg	1	SCVL017-A6800
553409	DTR 69kV L066096 Strain	DTR	Korea	69kV	160 Eye & Eye	1658	15	855	Grey	4.6kg	1	SEHL015-B1100



Ball & Socket Suspension Insulator



Y Clevis Suspension Insulator



Eye Eye Strain Insulator

POLYMERIC SUSPENSION INSULATORS FOR TRANSMISSION

Part Number	Description	Brand	Origin	Rated	Creep (mm)	Strength (kN)	Length (mm)	Sheds	Reference	Colour	Weight	Drawing
110kV Suspension Strains												
553417	Ball & Socket	DTR	Korea	115kV	3754	120	1232	35	L011760	Grey	7.1kg	SCGL035-A6801
553425	Y Clevis	DTR	Korea	115kV	3754	120	1253	35	L011760Y	Grey	7.6kg	SCGL035-A2801
553433	Ball & Socket	DTR	Korea	115kV	3893	120	1214	27	L011761	Grey	8.8kg	SCGL027-A6801
553441	Ball & Socket	DTR	Korea	115kV	3754	210	1241	35	L011770	Grey	8.0kg	SFGL035-B6801
553468	Y Clevis	DTR	Korea	115kV	3754	210	1262	35	L011770Y	Grey	8.5kg	SFVL035-B2801
553476	Ball & Socket	DTR	Korea	115kV	3893	210	1226	27	L011771	Grey	9.0kg	SFVL027-B6801
220kV Suspension Strains												
553484	Ball & Socket	DTR	Korea	230kV	7121	120	2096	67	L011762	Grey	11.9kg	SCGL067-A6811
553492	Ball & Socket	DTR	Korea	230kV	7606	120	2137	53	L011763	Grey	13.0kg	SCVL053-A6811
553506	Ball & Socket	DTR	Korea	230kV	7121	210	2105	67	L011772	Grey	12.4kg	SFGL067-B6811
553514	Ball & Socket	DTR	Korea	230kV	7607	210	2149	53	L011773	Grey	14.5kg	SCGL053-B6811
400kV Suspension Strains												
553522	Ball & Socket	DTR	Korea	500kV	12804	120	3554	121	L011764	Grey	18.5kg	SCGL121-A6813
553530	Ball & Socket	DTR	Korea	500kV	13301	120	3557	93	L011765	Grey	21.7kg	SCVL093-A6813
553549	Ball & Socket	DTR	Korea	500kV	12804	210	3563	121	L011774	Grey	19.5kg	SFGL121-B6813
553557	Ball & Socket	DTR	Korea	500kV	13301	210	3569	93	L011775	Grey	22.7kg	SFVL093-B6813



GIG Standard Profile – Tongue & Clevis



Bottom View

Clevis



Wooden Packaging

11kV TOUGHENED GLASS DISCS FOR DISTRIBUTION (IEC 383-1)

Part Number	Description	Brand	Origin	Strength	Coupling	Diameter	Creepage	Colour	Unit Weight	Box/ Pallet	Drawing
Standard Profile Discs											
119350	GIG 11kV T&C Glass Disc	GIG	Ukraine	70kN	Tongue & Clevis	255mm	320mm	Clear	Each 3.6kg	3/96	U70C
119407	GIG 11kV B&S Glass Disc	GIG	Ukraine	70kN	Ball & Socket	255mm	320mm	Clear	Each 3.6kg	6/144	U70BS(BL)
Fog Profile Disc											
119415	GIG 11kV B&S Fog Disc	GIG	Ukraine	70kN	Ball & Socket	280mm	450mm	Clear	Each 5.3kg	3/96	LXHY5-70



HV TOUGHENED GLASS DISCS FOR TRANSMISSION (IEC 60305)

Part Number	Description	Brand	Origin	Failing	Puncture	Coupling	Diameter	Creepage	Spacing	Unit Weight	Box/ Pallet	Drawing
GIG 120kN												
118001	U120B Glass Disc	GIG	Ukraine	120kN	130kV	Ball & Socket	255mm	320mm	146mm	Each 3.9kg	5/120	N-620R
GIG 160kN												
118028	U160BS Glass Disc	GIG	Ukraine	160kN	130kV	Ball & Socket	280mm	385mm	146mm	Each 6.1kg	6/126	N-101B
GIG 300kN												
118036	U300B Glass Disc	GIG	Russia	300kN	130kV	Ball & Socket	320mm	390mm	195mm	Each 10.0kg	4/36	N-696



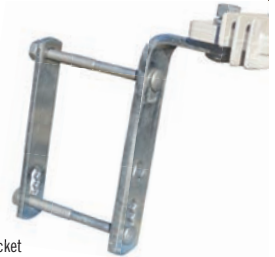
DTR 12kV Class 1 (CA12/10.HD)



Made in Korea



32mm Top



Nema Bracket



Base Fitting

12kV POLYMER SURGE ARRESTERS (IEC 60099-4)

Part Number	Description	Brand	Origin	Rated Voltage	Rated Current	MCOV	Top Fitting	Bracket	Colour	Box/ Pallet	Drawing
12kV Surge Arresters											
553042	DTR 12kV 10kA Class 1	DTR	Korea	12kV	10kA	10.2kV	32mm	Nema	Grey	3/168	CA12/10.HD
553077	DTR 12kV 10kA Class 1	DTR	Korea	12kV	10kA	10.2kV	100mm	Nema	Grey	3/168	CA12/10.HD100
553204	DTR 12kV 10kA Class 2	DTR	Korea	12kV	10kA	9.6kV	32mm	Nema	Grey	3/168	CA12/10.2D

Top Fitting



Nema Bracket



DTR 15kV (CA15/10.2D)

15kV POLYMER SURGE ARRESTER (IEC 60099-4)

Part Number	Description	Brand	Origin	Rated Current	MCOV	Top Fitting	Bracket	Colour	Box/ Pallet	Drawing
	15kV Surge Arrester									
553646	DTR 15kV 10kA Class 2	DTR	Korea	15kV 10kA	12.0kV	32mm	Nema	Grey	3/168	CA15/10.2D



DTR 18kV Alt Sheds (CA18/10.1D)



Nema Bracket



DTR 18kV (CA18/10.2D)

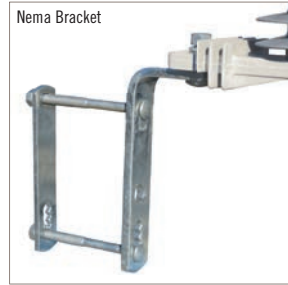
18kV POLYMER SURGE ARRESTERS (IEC 60099-4)

Part Number	Description	Brand	Origin	Rated Current	MCOV	Top Fitting	Bracket Colour	Box/ Pallet	Drawing
18kV Surge Arresters									
553050	DTR 18kV 10kA Class 1 (Alt Sheds)	DTR	Korea	18kV 10kA	15.3kV	32mm	Nema Grey	3/168	CA18/10.1D
553565	DTR 18kV 10kA Class 2	DTR	Korea	18kV 10kA	15.3kV	32mm	Nema Grey	3/168	CA18/10.2D

DTR 18kV Alt Sheds (CA18/10.1D)



Nema Bracket



DTR 18kV (CA18/10.2D)

33kV POLYMER SURGE ARRESTERS (IEC 60099-4)

Part Number	Description	Brand	Origin	Rated Current	MCOV	Top Fitting	Bracket Colour	Box/ Drawing Pallet
18kV Surge Arresters								
554227	DTR 33kV 10kA Class 1	DTR	Korea	33kV 10kA	28.05kV	32mm	Nema Grey	1/60 CA33/10.1D
554235	DTR 33kV 10kA Class 2	DTR	Korea	33kV 10kA	26.4kV	32mm	Nema Grey	1/60 CA33/10.2D





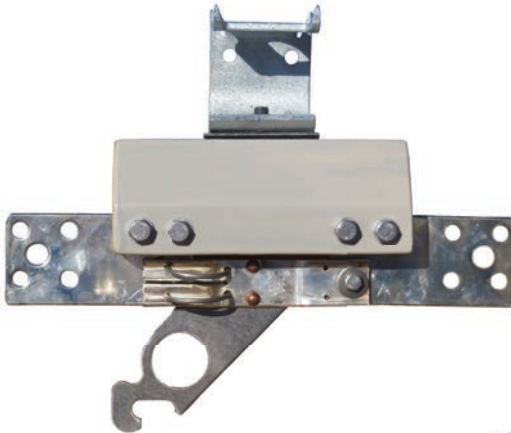
LVI Bottom View



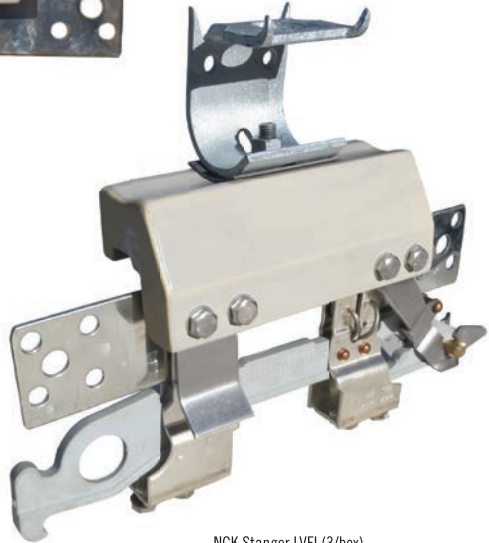
LVI Top View



LVFI Lower End View



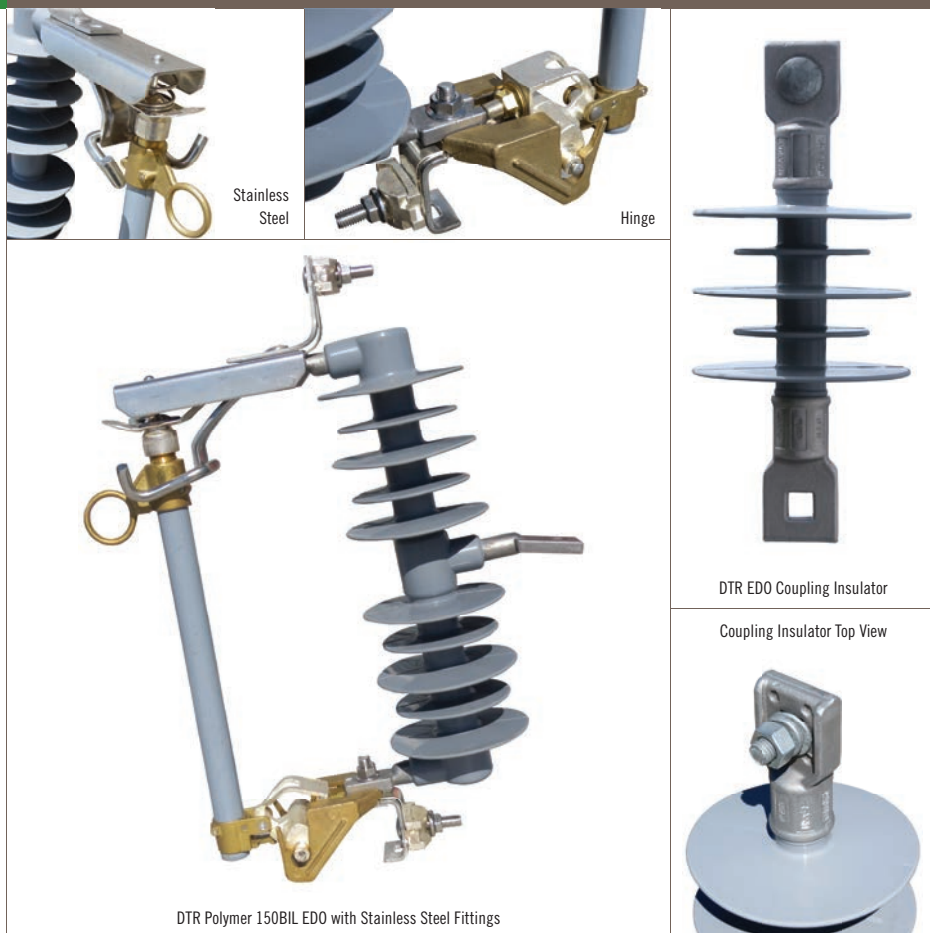
NGK Stanger LVI (3/box)



NGK Stanger LVFI (3/box)

SOLID LINK LVI & FUSED LINK LVFI ISOLATORS

Part Number	Description	Brand	Origin	Rated Current	Contacts	Standard	Weight	Box/ Drawing	Pallet
Single Solid Link LVI									
258377	NGK-S Low Voltage Isolator	NGK-S	Australia	480V	630A	Silver M12 AS175-1975	2.5kg	3	NZ4284
Single Fused Link LVFI									
258385	NGK-S Low Voltage Fused Isolator	NGK-S	Australia	480V	630A	Silver M12 AS175-1975	3.3kg	3	NZ4286



POLYMER EDO DROPOUTS

Part Number	Description	Brand	Origin	Rated kV	BIL	Current	Creepage Length	Colour	Weight	Box/ Pallet	Drawing	
554448	DTR 15kV Polymer EDO	DTR	Korea	15kV	125kV	100A	370mm	292.5mm	Grey	4.6kg	1/100	CSNL15-BP1-100D
554375	DTR 27kV Polymer EDO	DTR	Korea	27kV	150kV	100A	580mm	383.5mm	Grey	5.6kg	1/86	CSNL27-BP1-100D
554413	DTR 36kV Polymer EDO	DTR	Korea	36kV	175kV	100A	1080mm	513.5mm	Grey	6.4kg	1/44	CSNL36-BP1-100D

EDO Coupling Insulator

Part Number	Description	Brand	Origin	Rated kN	Leakage	Length	Colour	Weight	Box/ Pallet	Drawing	
553098	EDO Coupling Insulator	DTR	Korea	15kV	9.8	450mm	265mm	Grey	1.2kg	20/600	CI265-120AL



12-24kV 150BIL EDO (100A)



Hinge



Contact Mechanism

100A PORCELAIN EDO C-TYPE DROPOUT SWITCHES

Part Number	Description	Brand Origin	BIL	Current	Creepage	Breaking	Colour	Standard	Weight	Box/ Pallet	Drawing
125BIL EDO with Fuse Tube											
258431	NGK-S 12/24kV Porcelain EDO	NGK-S Australia	125kV	100A	300mm	8kA@ 12kV	Grey	AS/NZS 1033.1	9.1kg	1/42	72297/12
150BIL EDO with Fuse Tube											
539023	NGK-S 12/24kV Porcelain EDO	NGK-S Australia	150kV	100A	475mm	8kA@ 12kV	Grey	AS/NZS 1033.1	12.8kg	1/42	72298/15
170BIL EDO with Fuse Tube											
539031	NGK-S 24/36kV Porcelain EDO	NGK-S Australia	170kV	100A	600mm	6kA@ 24kV	Grey	AS/NZS 1033.1	13.3kg	1/28	72299/ 27NORQEB
EDO Optional Accessories											
	NGK-S EDO Earthing Stirrup	NGK-S Australia									70450/6
	NGK-S EDO Fire Prevention Device	NGK-S Australia									72835
	NGK-S EDO Birdproof Cover	NGK-S Australia									72905



170BIL EDO with Earthing Stirrup



170BIL EDO



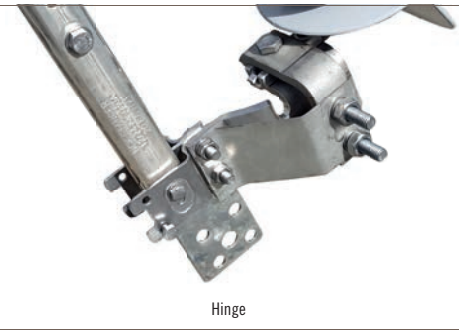
Earthing Stirrup



Hinge

100A POLYMER EDO C-TYPE DROPOUT SWITCHES

Part Number	Description	Brand	Origin	BIL	Current	Creepage	Breaking	Colour	Weight	Box/Pallet	Drawing
539384	NGK-S 12/24kV Polymer EDO	NGK-S	Australia	150kV	100A	820mm	8kA @ 12kV	Grey	4.7kg	1/42	72298/17
539341	NGK-S 24/36kV Polymer EDO	NGK-S	Australia	170kV	100A	1045mm	6kA @ 24kV	Grey	4.9kg	1/22	72299/26



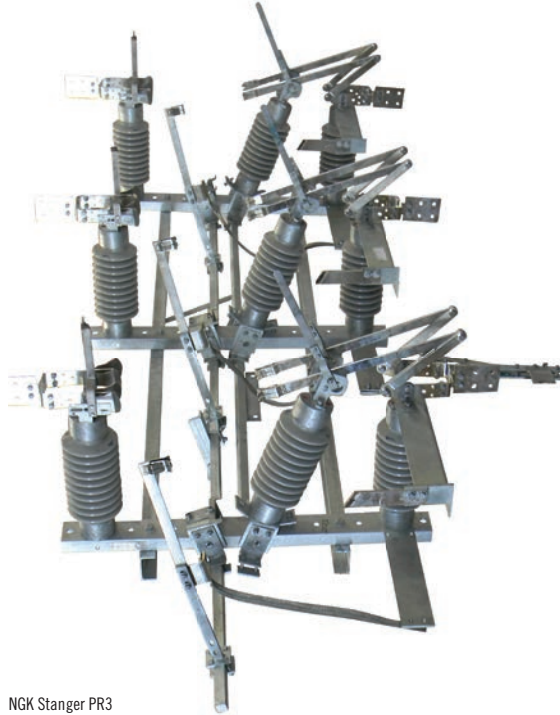
630A POLYMER HVI C-TYPE SOLID LINKS

Part Number	Description	Brand Origin	BIL	Current	Creepage	Breaking	Colour	Standard	Weight	Box/Pallet	Drawing
150BIL HVI											
539376	NGK-S 12/24kV Single Pole HVI	NGK-S Australia	150kV	630A	820mm	20kA @ 1 sec	Grey	AS1306	6.8kg	1/24	70414/EE
170BIL HVI											
539368	NGK-S 24/36kV Single Pole HVI	NGK-S Australia	170kV	630A	1045mm	20kA @ 1 sec	Grey	AS1306	7.2kg	1/24	70423/EE



630A PORCELAIN HVI C-TYPE SOLID LINKS

Part Number	Description	Brand Origin	BIL	Current	Creepage	S/T Current	Colour	Standard	Weight	Box/ Pallet	Drawing
125BIL HVI											
253634	NGK-S 12kV Single Pole HVI	NGK-S Australia	125kV	630A	300mm	20kA at 1sec	Grey	AS/NZS 1025	9.0kg	1/28	70416/WBB
253014	NGK-S 12/24kV Single Pole HVI	NGK-S Australia	125kV	630A	300mm	20kA at 1sec	Grey	AS/NZS 1025	9.0kg	1/28	70416/NSW
150BIL HVI											
539058	NGK-S 12/24kV Single Pole HVI	NGK-S Australia	150kV	630A	475mm	20kA at 1sec	Grey	AS/NZS 1306	10.5kg	1/28	70414/NSW
170BIL HVI											
539228	NGK-S 24/36kV Single Pole HVI	NGK-S Australia	170kV	630A	600mm	20kA at 1sec	Grey	AS/NZS 1306	12.0kg	1/28	70423/1
539007	NGK-S 24/36kV Single Pole HVI	NGK-S Australia	170kV	630A	600mm	20kA at 1sec	Grey	AS/NZS 1306	12.0kg	1/28	70423/1EE
539236	NGK-S 24/36kV Single Pole HVI + Earth Stirrup	NGK-S Australia	170kV	630A	600mm	20kA at 1sec	Grey	AS/NZS 1306	13.5kg	1/28	70423/2CE
Universal Mounting Brackets for NGK-S HVI											
253006	NGK-S HVI Mounting Bracket (Z)	NGK-S Australia									69196
253472	NGK-S HVI Mounting Bracket (Y)	NGK-S Australia									69194



NGK Stanger PR3

MANUAL PR3 AIR BREAK SWITCHES

Part Number	Description	Brand	Origin	Rating	Current	BIL	Rate S/T Current	Standard	Drawing
Manual Flicker Style Air Break Switches									
539139	NGK-S 12kV PR3 Vert/Hor ABS	NGK-S	Australia	12kV	630A	150kV	20kA at 1sec	AS/NZS ISO 9001:2008	69118
539147	NGK-S 24kV PR3 Vert/Hor ABS	NGK-S	Australia	24kV	630A	150kV	16kA at 1sec	AS/NZS ISO 9001:2008	69119
539155	NGK-S 36kV PR3 Vert/Hor ABS	NGK-S	Australia	36kV	630A	200kV	20kA at 1sec	AS/NZS ISO 9001:2008	69120
Optional Accessories for NGK-S ABS									
	NGK-S ABS Earth Switch (24&36kV only)	NGK-S	Australia						
	NGK-S ABS Dropout Fuse Mount	NGK-S	Australia						
	NGK-S ABS Crossarm	NGK-S	Australia						
	NGK-S ABS Operating Handle	NGK-S	Australia						
	NGK-S ABS Mounting Bracket Kit	NGK-S	Australia						
	NGK-S ABS Double Break Interrupter	NGK-S	Australia						
	NGK-S ABS ARCBREK 5 Interrupter	NGK-S	Australia						



Compact 12kV SF6 (NGK Stanger 91776)



Compact 24kV SF6

MANUAL SF6 LOAD BREAK GAS SWITCHES

Part Number	Description	Brand	Origin	Rating	Current	Making Current	Standard	Weight	Drawing
Manual SF6 Gas Switches									
539082	NGK-S 12kV SF6 Compact Gas Switch	NGK-S	Australia	12kV	630A	41.6kA	AS/NZS ISO 9001:2008	75kg	91776
539090	NGK-S 24kV SF6 Compact Gas Switch	NGK-S	Australia	24kV	630A	41.6kA	AS/NZS ISO 9001:2008	95kg	90030
539104	NGK-S 36kV SF6 Gas Switch	NGK-S	Australia	36kV	630A	33kA	AS/NZS ISO 9001:2008	180kg	90036
Optional Accessories for all SF6									
	NGK-S SF6 Safety Locking Kit	NGK-S	Australia						91777
Optional Accessories for 12&24kV SF6									
	NGK-S SF6 12/24 Crossarm	NGK-S	Australia						91743
	NGK-S SF6 12/24 Surge Diverter Mounting Kit	NGK-S	Australia						91806
	NGK-S SF6 12/24 Mid Pole Actuator Kit	NGK-S	Australia						95110
Optional Accessories for 36kV SF6									
	NGK-S SF6 36 Crossarm	NGK-S	Australia						90481
	NGK-S SF6 36 Pole Top Mounting Kit	NGK-S	Australia						90498
	NGK-S SF6 36 Surge Diverter Mounting Kit	NGK-S	Australia						95001



13mm 1800mm 250 micron Copper Plated Earth Rods to AS 1154-1:2009

BCP13P Brass Coupler

TPS13 Star Point

REB12/15-70

REX16-120

REC35-120

DHT13 Driving head

Pack/10

FULTON 13mm EARTH RODS & ACCESSORIES

Part Number	Description	Brand	Origin	Diameter	Length	Detail	Unit	Weight	Pack Qty	Drawing
13mm Copper Plated Earth Rods										
524433	Fulton CPR-13-1800	Fulton	Australia	13mm	1800mm	250micron	Each	1.8kg	10	8-S0338
Accessories for 13mm Earth Rods										
524441	Fulton BC13LP Brass Coupler	Fulton	Australia	Fit 13mm	72mm		Each	70g	20	8-S0299
523119	Fulton TPS13 Star Point	Fulton	Australia	Fit 13mm	72mm		Each	100g	20	658-A4
523755	Fulton 13D-1 Brass Clip	Fulton	Australia	Fit 13mm			Each	20g	20	8-S0046
523178	Fulton ERDP-1 Driving Pin	Fulton	Australia		32mm		Each	10g	25	1161-A4
523461	Fulton DHT13 Driving Head Tool	Fulton	Australia	Fit 13mm	102mm		Each	300g	5	659-A4
523488	Fulton K900DM13 Kango Driving Moil	Fulton	Australia	Fit 13mm	227mm		Each	570g	1	1311-A4
Clamps for 13mm Earth Rods										
523070	Fulton REB12/15 Clamp	Fulton	Australia		40mm	Cable Range 10-70mm ²	Each	100g	20	8-S0034
523844	Fulton REX16-120 Clamp	Fulton	Australia		64mm	Cable Range 16-120mm ²	Each	260g	10	945-A4
523089	Fulton REC35-120 Clamp	Fulton	Australia		67mm	Cable Range 35-120mm ²	Each	150g	10	611-A4

FULTON 15 & 19mm Earth Rods & Accessories



FULTON 15mm/19mm EARTH RODS & ACCESSORIES

Part Number	Description	Brand	Origin	Diameter	Length	Detail	Unit	Weight	Pack Qty	Drawing
15mm Copper Plated Earth Rod										
524468	Fulton CPR-15-1800 Earth Rod	Fulton	Australia	15mm	1800mm	250micron	Each	2.3kg	5	8-S0340
524476	Fulton CPR-15-2400 Earth Rod	Fulton	Australia	15mm	2400mm	250micron	Each	3.0kg	5	8-S0341
Accessories for 15mm Earth Rods										
524484	Fulton BCP15P Brass Coupler	Fulton	Australia	Fit 15mm	70mm	–	Each	70g	20	8-S0300
523577	Fulton TPS15 Star Point	Fulton	Australia	Fit 15mm	72mm	–	Each	95g	10	617-A4
524158	Fulton DHT15 Driving Head Tool	Fulton	Australia	Fit 15mm	102mm	–	Each	300g	1	1239-A4
524360	Fulton K900DM15 Driving Moil	Fulton	Australia	Fit 15mm	222mm	–	Each	570g	1	1309-A4
Clamps for 15mm Earth Rods										
523070	Fulton REB12/15 Clamp	Fulton	Australia		40mm	Cable Range 10-70mm ²	Each	100g	20	8-S0034
523844	Fulton REX16-120 Clamp	Fulton	Australia		40mm	Cable Range 16-120mm ²	Each	260g	10	945-A4
524352	Fulton RET25-120/3 Clamp for 3 Cables	Fulton	Australia		74mm	Cable Range 25-120mm ²	Each	700g	10	1290-A4
523089	Fulton REC35-120 Clamp	Fulton	Australia		67mm	Cable Range 35-120mm ²	Each	150g	10	611-A4
19mm Copper Plated Earth Rod										
524492	Fulton CPR-19-1800 Earth Rod	Fulton	Australia	19mm	1800mm	250micron	Each	3.3kg	5	8-S0342
524506	Fulton CPR-19-2400 Earth Rod	Fulton	Australia	19mm	2400mm	250micron	Each	4.4kg	5	8-S0355
Accessories for 19mm Earth Rods										
524514	Fulton BC19P Brass Coupler	Fulton	Australia	Fit 19mm	95mm	–	Each	155g	20	8-S0301
523151	Fulton TP19 Earth Rod Point	Fulton	Australia	Fit 19mm	60mm	–	Each	95g	10	1304-A4
523143	Fulton DHT19 Driving Head Tool	Fulton	Australia	Fit 19mm	102mm	–	Each	300g	1	1305-A4
524379	Fulton K900DM19 Driving Moil	Fulton	Australia	Fit 19mm	222mm	–	Each	570g	1	1306-A4
Clamps for 19mm Earth Rods										
523615	Fulton EC2 Earth Clamp	Fulton	Australia		110mm	Cable Range 16-25mm ²	Each	485g	10	1308-A4
523844	Fulton REX16-120 Clamp	Fulton	Australia		40mm	Cable Range 16-120mm ²	Each	260g	10	945-A4
524352	Fulton RET25-120/3 Clamp for 3 Cables	Fulton	Australia		74mm	Cable Range 25-120mm ²	Each	700g	10	1290-A4



AVON HDG & STAINLESS STEEL EARTH RODS

Part Number	Description	Brand	Origin	Length	Diameter	Construction	Unit	Weight	Pack Qty	Drawing
16mm HDG Steel Earth Rods										
537071	Avon 16mm Pointed Earth Rod (no tab)	Avon	NZ	2.0m	16mm	HDG Steel	Each	3.3kg	10	AA24005
537098	Avon 16mm Pointed Earth Rod (with HD12A Tab)	Avon	NZ	2.0m	16mm	HDG Steel	Each	3.3kg	10	AA24009
Coupler for Avon HDG Earth Rods										
537101	Avon 16mm HDG Earth Rod Coupler	Avon	NZ	110mm	16mm	HDG Steel	Each	200g	10	AA24024
12mm Stainless Steel Earth Rod										
537128	Avon 12mm Tapered Earth Rod (no tab)	Avon	NZ	1.5m	12mm	316 Stainless	Each	1.4kg	10	AA24021
Coupler for Avon Stainless Earth Rod										
537136	Avon 12mm Stainless Earth Rod Coupler	Avon	NZ	85mm	12mm	316 Stainless	Each	50g	10	AA24015



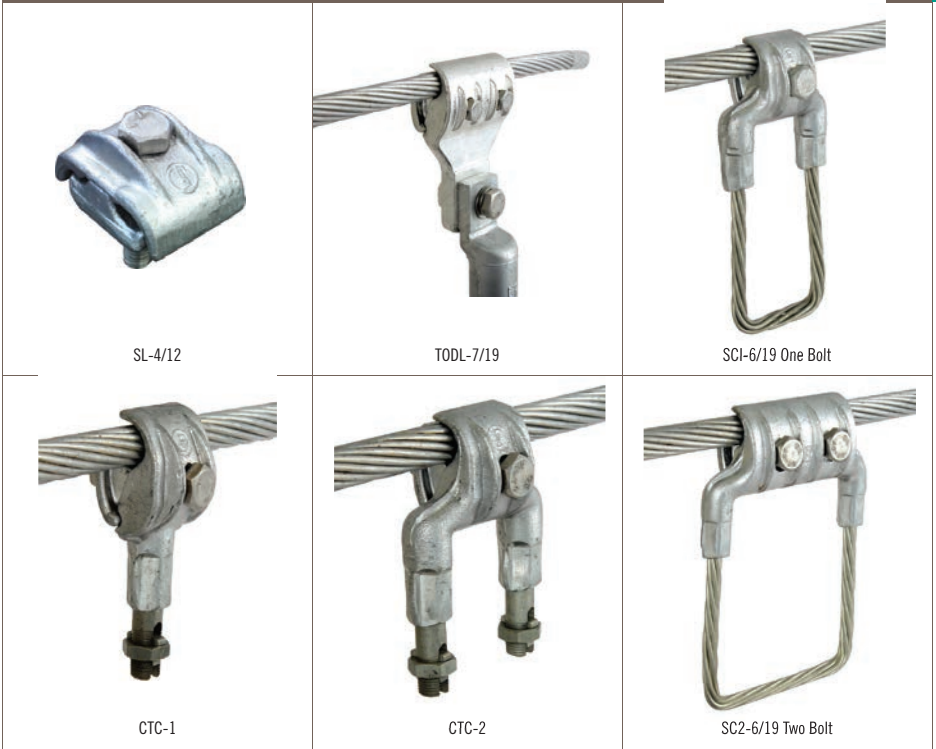
Good Earth



Fulton Earthing Rod Pit

FULTON EARTH ROD PIT & EARTHING COMPOUND

Part Number	Description	Brand	Origin	Footprint	Depth	Detail	Unit	Weight	Pack Qty	Drawing
Earth Rod Inspection Pit										
523763	Fulton PT205 Pit + Lid	Fulton	Australia	256x256	212mm	Black Poly + Grey HD Lid	Each	1.8kg	1	927-A4
Earthing Compound										
523704	Fulton 15kg Good Earth	Fulton	Australia	Covers 0.03m ³	—	Bentonite/ Gypsum mix	Bag	15kg	1	



SL-4/12

TODL-7/19

SCI-6/19 One Bolt

CTC-1

CTC-2

SC2-6/19 Two Bolt

TAPS, LUGS, SERVICE & CTC BOLTED CONNECTORS

Part Number	Description	Brand	Origin	Construction	Conductor	Conductor	Unit Weight	Box Qty
Aluminium Service Taps								
524344	Fulton SL-4/12 Service Tap	Fulton	Australia	Aluminium	7/3.00-7/4.75	9.0-14.3mm	Each 100g	10
524166	Fulton SL-7/19 Service Tap	Fulton	Australia	Aluminium	7/4.5-19/3.75	13.5-18.8mm	Each 200g	10
Aluminium Lugs								
524174	Fulton TODL-7/19 Lug	Fulton	Australia	Aluminium	7/2.5-19/3.75	7.0-19.0mm	Each 375g	10
524182	Fulton TODL-7/19ET 'Bling' Lug	Fulton	Australia	Bright ETP Ali	7/2.5-19/3.75	7.0-19.0mm	Each 375g	10
SC Aluminium Service Connectors								
524190	Fulton SC1-6/19 One-Bolt	Fulton	Australia	Ali + Copper Loop	7/2.25-19/3.75	6.75-18.75mm	Each 200g	10
524204	Fulton SC2-6/19 Two-Bolt	Fulton	Australia	Ali + Copper Loop	7/2.25-19/3.75	6.75-18.75mm	Each 400g	10
CTC Consumer Tee Connectors								
524212	Fulton CTC-1 Single Leg	Fulton	Australia	Aluminium	7/2.25-19/3.75	6.75-18.75mm	Each 175g	10
524220	Fulton CTC-1 Double Leg	Fulton	Australia	Aluminium	7/2.25-19/3.75	6.75-18.75mm	Each 260g	10



TO-7/19



TOD-4/12 Double



TOD-7/19 Triple



CV4P



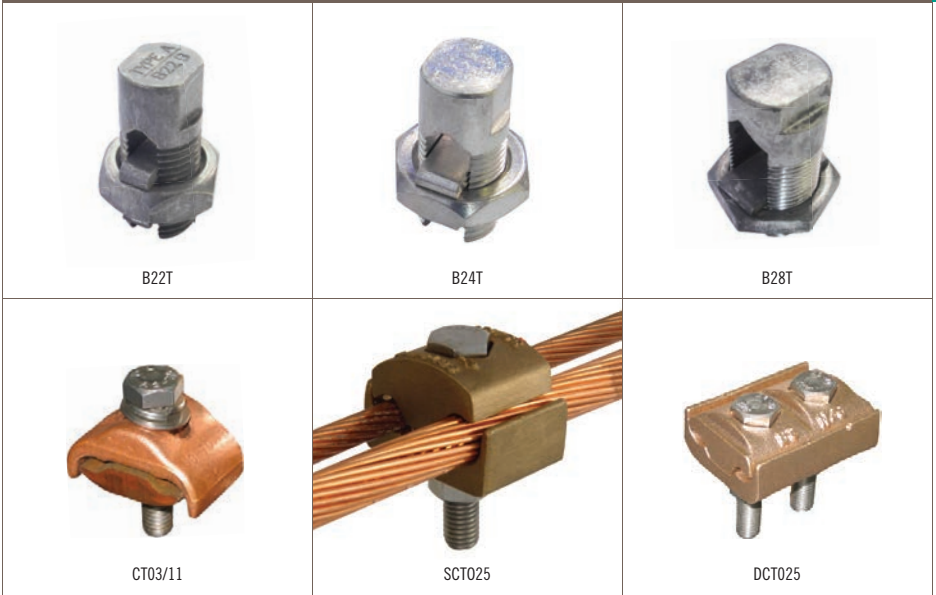
CV6P



CV9P

TEE-OFF & RISING MAIN CONNECTORS

Part Number	Description	Brand	Origin	Construction	Stainless	Conductor	Length	Unit	Weight	Box Qty
Tee-Off Connectors										
524018	Fulton TO-4/12 Single Bolted Tee-Off	Fulton	Australia	Aluminium	304	4-12mm ²	51	Each	200g	50
523453	Fulton TO-7/19 Single Bolted Tee-Off	Fulton	Australia	Aluminium	304	7-19mm ²	70	Each	237g	50
523003	Fulton TOD-4/12 Double Bolted Tee-Off	Fulton	Australia	Aluminium	304	4-12mm ²	70	Each	210g	50
523011	Fulton TOD-7/19 Double Bolted Tee-Off	Fulton	Australia	Aluminium	304	7-19mm ²	95	Each	475g	30
523720	Fulton TOD-7/19 Triple Bolted Tee-Off	Fulton	Australia	Aluminium	304	7-19mm ²	143	Each	800g	10
3-Piece Rising Main Connectors										
524026	Fulton CV3P Rising Main	Fulton	Australia	Gunmetal ETP	316	50-95mm ²	58	Each		15
524034	Fulton CV4P Rising Main	Fulton	Australia	Gunmetal ETP	316	120-240mm ²	58	Each		15
524042	Fulton CV5P Rising Main	Fulton	Australia	Gunmetal ETP	316	120-300mm ²	58	Each		15
524050	Fulton CV6P Rising Main	Fulton	Australia	Gunmetal ETP	316	120-240mm ²	70	Each	950g	15
523747	Fulton CV8P Rising Main	Fulton	Australia	Gunmetal ETP	316	300-800mm ²	77	Each		15
524069	Fulton CV9P Rising Main	Fulton	Australia	Gunmetal ETP	316	240-500mm ²	86	Each	1.4kg	15



SPLIT BOLT CONNECTORS & PARALLEL GROOVE CLAMPS

Part Number	Description	Brand	Origin	Construction	Conductor	Conductor	Conductor	Unit	Weight	Box Qty
Split Bolt Connectors										
524239	Fulton B22T Split Bolt Clamp	Fulton	Australia	ETP Brass	16mm ²	5.1mm	7/.064	Each		50
524247	Fulton B24T Split Bolt Clamp	Fulton	Australia	ETP Brass	35mm ²	8.3mm	7/.104	Each		25
524255	Fulton B25T Split Bolt Clamp	Fulton	Australia	ETP Brass	70mm ²	10.7mm	19/.083	Each		25
524263	Fulton B26T Split Bolt Clamp	Fulton	Australia	ETP Brass	95mm ²	12.6mm	19/.101	Each		10
524271	Fulton B28T Split Bolt Clamp	Fulton	Australia	ETP Brass	185mm ²	17.64mm	37/.130	Each		4

Part Number	Description	Brand	Origin	Joining	Length	Construction	Unit	Weight	Box Qty
Parallel Groove Clamps									
524298	Fulton CT03/11 M8 Single Bolt PG Clamp	Fulton	Australia	10-70mm ²	25mm	CU + 304 Fixings	Each	120g	10
524301	Fulton DCT03/11 M8 Double Bolt PG Clamp	Fulton	Australia	10-70mm ²	51mm	CU + 304 Fixings	Each	240g	10
524328	Fulton SCT025 M12 Single Bolt PG Clamp	Fulton	Australia	35-150mm ²	34mm	CU + 304 Fixings	Each	400g	5
524336	Fulton DCT025 M12 Double Bolt PG Clamp	Fulton	Australia	35-150mm ²	71mm	CU + 304 Fixings	Each	790g	5

FULTON WEDGE Clamp



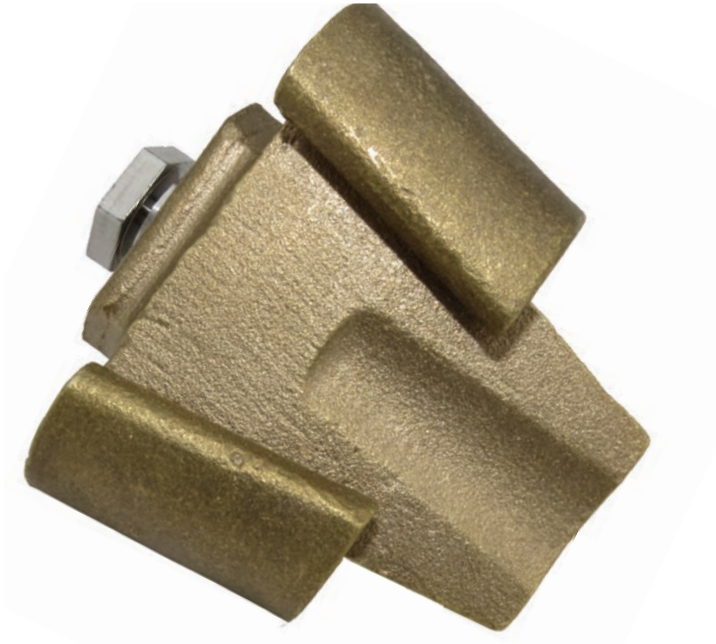
Top View



Back View



Bottom View



One Size Fits All ECW-1 (25-70mm²)

FULTON WEDGE CLAMP

Part Number	Description	Brand	Origin	Conductor Range	Length	Construction	Bolts	Unit Weight	Pack Qty	Drawing
One-Size-Fits-All Wedge Clamp										
524107	Fulton ECW-1	Fulton	Australia	25-70mm ²	56mm	Gunmetal	304 Stainless	Each 450g	25	8-S0182



Lineguard 160A



Mini Wedge

LINEGUARD DISCONNECTS & MINI WEDGE FUSEHOLDER

Part Number	Description	Brand	Origin	Amps	Colour	Detail	Complies With	Unit	Weight	Box Qty
Lineguard Disconnects										
468177*	NZI 100A Single Phase Ferrule Disconnect	NZI	NZ	100A	Black	Polyamide & Nickel-Plated NFM	IEC 60947	Each	545g	20
468185*	NZI 160A Single Phase NH00 Disconnect	NZI	NZ	160A	Black	Polyamide & Nickel-Plated NFM	IEC 60947	Each	505g	20
468436	NZI 160A Single Phase NH00 Disconnect	NZI	NZ	160A	Black	Polyamide & Nickel-Plated NFM	IEC 60947	Each	505g	20
Porcelain Mini Wedge Fuseholder										
468789	NZI Mini Wedge Offset Tag Carrier/Base Complete	NZI	NZ	200A	Grey	Porcelain & ETPNFM	AS/NZS 3947	Each	3.0kg	5

* Limited stock available.



3 x FSD 401



FSD 401



FSD 401 Bracket

FSD400



FSD401

FSD THREE & SINGLE PHASE DIN FUSE DISCONNECTS (AS/NZS 3947-1)

Part Number	Description	Brand Origin	Rated Amps	Fits	Terminations	Weight	Box Qty	Drawing
FSD 160A Disconnects								
539252	NGK-S FSD160 Single Phase	NGK-S Australia	415V	160A	NH00	IPC/IPC 6-95mm ²	1.0kg	1 71932
539260	NGK-S Bracket for 3 x FSD160	NGK-S Australia	415V				1.7kg	1 72485/2
FSD 250A Disconnects								
539279	NGK-S FSD250 Three Phase + Bracket	NGK-S Australia	415V	250A	NH1&2	IPC/IPC 6-95mm ²	6.0kg	1 72477/1
FSD 400A Disconnects								
468908	NGK-S FSD400 Three Phase + Bracket	NGK-S Australia	415V	400A	NH1&2	4.76mm T/Palms	6.0kg	1 71969/5
468916	NGK-S FSD401 Single Phase	NGK-S Australia	415V	400A	NH1,2&3	4.76mm T/Palms	2.0kg	1 73401/5
469106	NGK-S Bracket for 3 x FSD401	NGK-S Australia	415V				1.7kg	1 72923
FSD 630A Disconnect								
468819	NGK-S FSD631 Single Phase	NGK-S Australia	415V	630A	NH2&3	6.35mm T/Palms	2.0kg	1 73631/5



REWIREABLE PORCELAIN POLE MOUNTED CUTOUTS

Part Number	Description	Brand	Origin	Amps	Wired?	Glaze	Construction	Unit	Weight	Box Qty
30A Rewireable Cutouts										
144029	NZI 30A RW Plug + Base	NZI	NZ	30A		Grey	Porcelain & ETPNFM	Each	690g	30
146137	NZI 30A RW Plug + Base + Wired	NZI	NZ	30A	Wired	Grey	Porcelain & ETPNFM	Each	690g	30
144452	NZI 30A RW Plug Only	NZI	NZ	30A		Grey	Porcelain & ETPNFM	Each	190g	54
144061	NZI 30A RW Plug + Wired	NZI	NZ	30A	Wired	Grey	Porcelain & ETPNFM	Each	190g	30
144495	NZI 30A Universal Cutout Base	NZI	NZ	30A		Grey	Porcelain & ETPNFM	Each	460g	30
60A Rewireable Cutouts										
144398*	NZI 60A RW Plug + Base	NZI	NZ	60A		Grey	Porcelain & ETPNFM	Each	1.5kg	15
146110	NZI 60A RW Plug + Base + Wired	NZI	NZ	60A	Wired	Grey	Porcelain & ETPNFM	Each	1.5kg	15
144444*	NZI 60A RW Plug Only	NZI	NZ	60A		Grey	Porcelain & ETPNFM	Each	380g	30
146129*	NZI 60A RW Plug + Wired	NZI	NZ	60A	Wired	Grey	Porcelain & ETPNFM	Each	380g	15
144509	NZI 60A Universal Cutout Base	NZI	NZ	60A		Grey	Porcelain & ETPNFM	Each	1.1kg	15
100A Rewireable Cutouts										
144916*	NZI 100A RW Plug + Base	NZI	NZ	100A		Grey	Porcelain & ETPNFM	Each	3.1kg	6
146145	NZI 100A RW Plug + Base + Wired	NZI	NZ	100A	Wired	Grey	Porcelain & ETPNFM	Each	3.1kg	6
144959*	NZI 100A RW Plug Only	NZI	NZ	100A		Grey	Porcelain & ETPNFM	Each	720g	6
144703*	NZI 100A RW Plug + Wired	NZI	NZ	100A	Wired	Grey	Porcelain & ETPNFM	Each	720g	6

* Limited stock available.



30A



60A



Top View



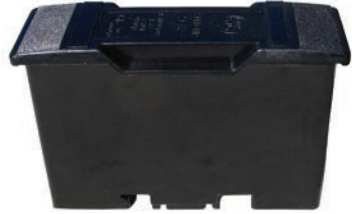
60A HRC

HRC PORCELAIN POLE MOUNTED CUTOUTS

Part Number	Description	Brand	Origin	Amps	Fuse Included?	Glaze	Construction	Unit	Weight	Box Qty
30A HRC Cutouts										
144037	NZI 30A HRC Plug + Base	NZI	NZ	30A	–	Grey	Porcelain & ETPNFM	Each	620g	30
144118	NZI 30A HRC Plug Only	NZI	NZ	30A	–	Grey	Porcelain & ETPNFM	Each	130g	30
144495	NZI 30A Universal Cutout Base	NZI	NZ	30A	–	Grey	Porcelain & ETPNFM	Each	460g	30
60A HRC Cutouts										
144401	NZI 60A HRC Plug + Base	NZI	NZ	60A	–	Grey	Porcelain & ETPNFM	Each	1.7kg	15
144460	NZI 60A HRC Plug + Base + 60KR85	NZI	NZ	60A	60KR85	Grey	Porcelain & ETPNFM	Each	1.8kg	15
144525	NZI 60A HRC Plug Only	NZI	NZ	60A	–	Grey	Porcelain & ETPNFM	Each	595g	30
144630	NZI 60A HRC Plug + 60KR85	NZI	NZ	60A	60KR85	Grey	Porcelain & ETPNFM	Each	645g	30
144509	NZI 60A Universal Cutout Base	NZI	NZ	60A	–	Grey	Porcelain & ETPNFM	Each	1.1kg	15



Economy G06



Safeclip SC32H-D



Safeloc 32NNSF



Safeloc 32NNSBS

32A FUSEHOLDERS FOR STAGGERED TAG FUSELINKS

Part Number	Description	Brand	Origin	Rating	Voltage	Configuration	Colour	Unit	Weight	Box Qty
Economy G06 Fuseholders (AS/NZS 60269)										
540161	32A G06 EE/EE Fuseholder	None	China	32A	550V	End Entry End Entry	Black	Each	85g	5
540757	32A G06 BE/BE Fuseholder	None	China	32A	550V	Back Entry Back Entry	Black	Each	85g	5
Safeclip NSD Fuseholder (IEC 60269)										
545031	Bussmann GE SC32H-D Front Wired	Bussmann	UK	32A	550V	Front Wired Front Wired	Black	Each	95g	10
Safeloc NSD Fuseholders (IEC 60269)										
545007	Bussmann 32NNSF Front Wired	Bussmann	India	32A	550V	Front Wired Front Wired	Black	Each	85g	10
545015	Bussmann 32NNSR Back Wired	Bussmann	India	32A	550V	Back Wired Back Wired	Black	Each	85g	10
540803	Bussmann 32NNSBS Back Stud	Bussmann	India	32A	550V	Back Stud Back Stud	Black	Each	115g	10
545023	Bussmann 32NNSFBS Front Wired Back Stud	Bussmann	India	32A	550V	Front Wired Back Stud	Black	Each	100g	10



G06, H07 & NITD HRC FUSELINKS (CLASS gG)

Part Number	Description	Brand	Origin	Amps	Volts	Break	Tags	Unit	Box Qty
G06 Staggered Fuselinks									
644609	2G06 (NSD2)	Bussmann	India	2A	550V	80kA	Staggered	Each	20
644617	4G06 (NSD4)	Bussmann	India	4A	550V	80kA	Staggered	Each	20
644625	6G06 (NSD6)	Bussmann	India	6A	550V	80kA	Staggered	Each	20
644633	10G06 (NSD10)	Bussmann	India	10A	550V	80kA	Staggered	Each	20
644641	16G06 (NSD16)	Bussmann	India	16A	550V	80kA	Staggered	Each	20
644668	20G06 (NSD20)	Bussmann	India	20A	550V	80kA	Staggered	Each	20
646881	25G06 (NSD25)	Bussmann	India	25A	550V	80kA	Staggered	Each	20
646903	32G06 (NSD32)	Bussmann	India	32A	550V	80kA	Staggered	Each	20
H07 Offset Fuselinks									
645303	2H07 (AA02)	Bussmann	India	2A	550V	80kA	Offset Bolted	Each	20
645311	4H07 (AA04)	Bussmann	India	4A	550V	80kA	Offset Bolted	Each	20
645338	6H07 (AA06)	Bussmann	India	6A	550V	80kA	Offset Bolted	Each	20
645346	10H07 (AA010)	Bussmann	India	10A	550V	80kA	Offset Bolted	Each	20
645354	16H07 (AA016)	Bussmann	India	16A	550V	80kA	Offset Bolted	Each	20
645362	20H07 (AA020)	Bussmann	India	20A	550V	80kA	Offset Bolted	Each	20
645370	25H07 (AA025)	Bussmann	India	25A	550V	80kA	Offset Bolted	Each	20
645389	32H07 (AA032)	Bussmann	India	32A	550V	80kA	Offset Bolted	Each	20
NITD Offset Fuselinks									
641332	NITD2	Bussmann	India	2A	550V	80kA	Offset Slotted	Each	20
641340	NITD4	Bussmann	India	4A	550V	80kA	Offset Slotted	Each	20
641359	NITD6	Bussmann	India	6A	550V	80kA	Offset Slotted	Each	20
641367	NITD10	Bussmann	India	10A	550V	80kA	Offset Slotted	Each	20
641375	NITD16	Bussmann	India	16A	550V	80kA	Offset Slotted	Each	20
641383	NITD20	Bussmann	India	20A	550V	80kA	Offset Slotted	Each	20
641391	NITD25	Bussmann	India	25A	550V	80kA	Offset Slotted	Each	20
641405	NITD32	Bussmann	India	32A	550V	80kA	Offset Slotted	Each	20



Red Spot Fuseholders now through NZI



Camaster CM63F



Red Spot RS63H

63A FUSEHOLDERS FOR OFFSET TAG FUSELINKS

Part Number	Description	Brand	Origin	Rating	Voltage	Configuration	Colour	Unit	Weight	Box Qty
Camaster 63A Cam Action Fuseholders (IEC 60269)										
692034	Bussmann Camaster CM63F Front Wired	Bussmann	India	63A	690V	Front Wired Front Wired	Black	Each	200g	5
692816	Bussmann Camaster CM63FW Front Wired White	Bussmann	India	63A	690V	Front Wired Front Wired	White	Each	200g	5
692123	Bussmann 63/100BS Back Stud for Camaster 63A	Bussmann	India	63/100A	690V	Back Stud Accessory	Black	Each	60g	5
Red Spot 63A Fuseholders (IEC 60269)										
692824	Bussmann Red Spot RS63H Front Wired	Bussmann	UK	63A	690V	Front Wired Front Wired	Black	Each	310g	10
692859	Bussmann Red Spot RS63HWH Front Wired White	Bussmann	UK	63A	690V	Front Wired Front Wired	White	Each	310g	10
692832	Bussmann Red Spot RS63P Back Stud	Bussmann	UK	63A	690V	Back Stud Back Stud	Black	Each	450g	10
692867	Bussmann Red Spot RS63PWH Back Stud White	Bussmann	UK	63A	690V	Back Stud Back Stud	White	Each	450g	10
692840	Bussmann Red Spot RS63PH Front Wired BS	Bussmann	UK	63A	690V	Front Wired Back Stud	Black	Each	380g	10



BS/BE

EB/EE



NZI 63A K07 Fuseholders, made in Temuka



Side View



BE/BE

63A FUSEHOLDERS FOR OFFSET TAG FUSELINKS

Part Number	Description	Brand	Origin	Amps	Rating	Configuration	Unit	Colour	Weight	Box Qty
63A K07 HG Phenolic Fuseholders (AS/NZS 60269)										
676004	NZI K07 63A EE/EE Fuseholder	NZI	NZ	63A	500V	End Entry End Entry	Each	Black	260g	6
676012	NZI K07 63A BE/BE Fuseholder	NZI	NZ	63A	500V	Back Entry Back Entry	Each	Black	270g	6
676020*	NZI K07 63A BE/EE Fuseholder	NZI	NZ	63A	500V	Back Entry End Entry	Each	Black	265g	6
678023	NZI K07 63A BS/BE Fuseholder	NZI	NZ	63A	500V	Back Stud Back Entry	Each	Black	320g	6
678031*	NZI K07 63A BS/EE Fuseholder	NZI	NZ	63A	500V	Back Stud End Entry	Each	Black	320g	6
678058	NZI K07 63A BB/EE Fuseholder	NZI	NZ	63A	500V	Back Busbar End Entry	Each	Black	290g	6
678066	NZI K07 63A EB/EE Fuseholder	NZI	NZ	63A	500V	End Busbar End Entry	Each	Black	280g	6
678074	NZI K07 63A EB/BE Fuseholder	NZI	NZ	63A	500V	End Busbar Back Entry	Each	Black	280g	6

* Limited stock available.



K07



L09



L14

K07, L09 & L14 HRC FUSELINKS (CLASS gG)

Part Number	Description	Brand	Origin	Amps	Volts	Break	Tags	Unit	Box Qty
K07 Offset Fuselinks									
645664	40K07 (BA040)	Bussmann	India	40A	550V	80kA	Offset	Each	20
645680	50K07 (BA050)	Bussmann	India	50A	550V	80kA	Offset	Each	20
645702	63K07 (BA063)	Bussmann	India	63A	550V	80kA	Offset	Each	20
692336	80K07R (OSD80)	Bussmann	India	80A	550V	80kA	Offset	Each	20
692344	100K07R (OSD100)	Bussmann	India	100A	550V	80kA	Offset	Each	20
L09 Offset Fuselinks									
646458	80L09 (CD80)	Bussmann	India	80A	550V	80kA	Offset	Each	10
646466	100L09 (CD100)	Bussmann	India	100A	550V	80kA	Offset	Each	10
L14 Offset Fuselinks									
646512	32L14 (CE032)	Bussmann	India	32A	550V	80kA	Offset	Each	10
646520	40L14 (CE040)	Bussmann	India	40A	550V	80kA	Offset	Each	10
646539	50L14 (CE050)	Bussmann	India	50A	550V	80kA	Offset	Each	10
646547	63L14 (CE063)	Bussmann	India	63A	550V	80kA	Offset	Each	10
646555	80L14 (CE080)	Bussmann	India	80A	550V	80kA	Offset	Each	10
646563	100L14 (CE0100)	Bussmann	India	100A	550V	80kA	Offset	Each	10



M14



M09



N09



P09

M14, M09, N09 & P09 HRC FUSELINKS (CLASS gG)

Part Number	Description	Brand	Origin	Amps	Volts	Break	Tags	Unit	Box Qty
M14 Offset Fuselinks									
646636	125M14 (DEO125)	Bussmann	India	125A	415V	80kA	Offset	Each	5
646652	160M14 (DEO160)	Bussmann	India	160A	415V	80kA	Offset	Each	5
646660	200M14 (DEO200)	Bussmann	India	200A	415V	80kA	Offset	Each	5
M09 Central Fuselinks									
646571	125M09 (DD125)	Bussmann	India	125A	415V	80kA	Central	Each	5
646601	160M09 (DD160)	Bussmann	India	160A	415V	80kA	Central	Each	5
646628	200M09 (DD200)	Bussmann	India	200A	415V	80kA	Central	Each	5
N09 Central Fuselinks									
646709	250N09 (ED250)	Bussmann	India	250A	415V	80kA	Central	Each	1
646717	315N09 (ED315)	Bussmann	India	315A	415V	80kA	Central	Each	1
P09 Central Fuselinks									
646679	355P09 (ED355)	Bussmann	India	355A	415V	80kA	Central	Each	1
646687	400P09 (ED400)	Bussmann	India	400A	415V	80kA	Central	Each	1



N11



P11



R11

N11, P11 & R11 HRC FUSELINKS (CLASS gG)

Part Number	Description	Brand	Origin	Amps	Volts	Break	Tags	Unit	Box Qty
N11 Central Fuselinks									
646768	250N11 (EFS250)	Bussmann	India	250A	415V	80kA	Central	Each	1
646776	315N11 (EFS315)	Bussmann	India	315A	415V	80kA	4-Hole Central	Each	1
P11 Central Fuselinks									
647942	355P11 (EF355)	Bussmann	India	355A	415V	80kA	4-Hole Central	Each	1
646644	400P11 (EF400)	Bussmann	India	400A	415V	80kA	4-Hole Central	Each	1
R11 Central Fuselinks									
646946	450R11 (FF450)	Bussmann	India	450A	690V	80kA	4-Hole Central	Each	1
646954	500R11 (FF500)	Bussmann	India	500A	690V	80kA	4-Hole Central	Each	1
646962	560R11 (FF560)	Bussmann	India	560A	690V	80kA	4-Hole Central	Each	1
646970	630R11 (FF630)	Bussmann	India	630A	690V	80kA	4-Hole Central	Each	1



Nzi 100A



Red Spot RS100H



Nzi 100A



Red Spot RS200H

100+A FUSEHOLDERS FOR OFFSET & CENTRAL TAG FUSELINKS

Part Number	Description	Brand	Origin	Rating	Voltage	Configuration	Colour	Unit	Weight	Box Qty
Camaster 100A Cam Action Fuseholders (IEC 60269)										
692042	Bussmann Camaster CM100F Front Wired	Bussmann	India	100A	690V	Front Wired Front Wired	Black	Each	210g	5
692123	Bussmann 63/100BS Back Stud for Camaster 63A	Bussmann	India	63/100A	690V	Back Stud Accessory	Black	Each	60g	5
Red Spot 100A Fuseholders (IEC 60269)										
692905	Bussmann Red Spot RS100H Front Wired 100A	Bussmann	UK	100A	690V	Front Wired Front Wired	Black	Each	850g	5
692875	Bussmann Red Spot RS100BW Back Wired 100A	Bussmann	UK	100A	690V	Back Wired Back Wired	Black	Each	795g	5
692913	Bussmann Red Spot RS100P Back Stud 100A	Bussmann	UK	100A	690V	Back Stud Back Stud	Black	Each	970g	5
692921	Bussmann Red Spot RS100PH Front Wired BS 100A	Bussmann	UK	100A	690V	Front Wired Back Stud	Black	Each	915g	5
Red Spot 200A Fuseholders (IEC 60269)										
692948	Bussmann Red Spot RS200H Front Wired 200A	Bussmann	UK	200A	690V	Front Wired Front Wired	Black	Each	2.1kg	1
Red Spot 400A Fuseholders (IEC 60269)										
692956	Bussmann Red Spot RS400H Front Wired 400A	Bussmann	UK	400A	690V	Front Wired Front Wired	Black	Each		1



MOTOR RATED HRC FUSELINKS (CLASS gG)

Part Number	Description	Brand	Origin	Amps	Volts	Break	Tags	Unit	Box Qty
G06 Motor Circuit Fuses									
649201	20M25 G06 MC (NSD20M25)	Bussmann	India	20M25	550V	80kA	Staggered	Each	20
649228	20M32 G06 MC (NSD20M32)	Bussmann	India	20M32	550V	80kA	Staggered	Each	20
649236	32M40 G06 MC (NSD32M40)	Bussmann	India	32M40	550V	80kA	Staggered	Each	20
H07 Motor Circuit Fuses									
649368	32M40 H07 MC (AAO32M40)	Bussmann	India	32M40	550V	80kA	Offset	Each	20
649384	32M50 H07 MC (AAO32M50)	Bussmann	India	32M50	550V	80kA	Offset	Each	20
649392	32M63 H07 MC (AAO32M63)	Bussmann	India	32M63	550V	80kA	Offset	Each	20
K07 Motor Circuit Fuses									
649457	63M80 K07 MC (BAO63M80)	Bussmann	India	63M80	550V	80kA	Offset	Each	20
649465	63M100 K07 MC (BAO63M100)	Bussmann	India	63M100	550V	80kA	Offset	Each	20
Other Motor Circuit Fuses									
649651	100M125 L09 MC (CD100M125)	Bussmann	India	100M125	415V	80kA	Central	Each	10
649597	100M125 L14 MC (CEO100M125)	Bussmann	India	100M125	415V	80kA	Offset	Each	10
649678	100M160 L09 MC (CD100M160)	Bussmann	India	100M160	415V	80kA	Central	Each	10
649619	100M160 L14 MC (CEO100M160)	Bussmann	India	100M160	415V	80kA	Offset	Each	10
649627	100M200 L14 MC (CEO100M200)	Bussmann	India	100M200	415V	80kA	Offset	Each	10
649694	200M250 M09 MC (DD200M250)	Bussmann	India	200M250	415V	80kA	Central	Each	5
649643	200M250 M14 MC (DEO200M250)	Bussmann	India	200M250	415V	80kA	Offset	Each	5
649724	315M400 N09 MC (ED315M400)	Bussmann	India	315M400	415V	80kA	Central	Each	1
646695	400M500 P09 MC (ED400M500)	Bussmann	India	400M500	415V	80kA	Central	Each	1
647950	400M500 P11 MC (EF400M500)	Bussmann	India	400M500	550V	80kA	Central	Each	1



HSB22FW



Use BS fuselinks 22mm or 30mm diameter x 57mm long



Back Entry or End Entry

HSB22 HOUSE SERVICE FUSEHOLDERS

Part Number	Description	Brand	Origin	Amps	Volts	Material	Weight	Unit	Box Qty
693251	HSB22BW Bussmann Back Entry House Service Fuseholder	Bussmann	China	100A	500V	Thermoplastic/ Polyamide	300g	Each	10
693243	HSB22FW Bussmann End Entry House Service Fuseholder	Bussmann	China	100A	500V	Thermoplastic/ Polyamide	300g	Each	10



60KR85

KR85 HOUSE SERVICE HRC FUSELINKS (CLASS gG TO BS1361)

Part Number	Description	Brand	Origin	Amps	Volts	Break	Configuration	Unit	Box Qty
KR85 House Service Fuses									
647802	5A (5KR85)	Bussmann	India	5A	415V	33kA	22x57mm Ferrule	Each	20
647810	10A (10KR85)	Bussmann	India	10A	415V	33kA	22x57mm Ferrule	Each	20
647829	15A (15KR85)	Bussmann	India	15A	415V	33kA	22x57mm Ferrule	Each	20
647837	20A (20KR85)	Bussmann	India	20A	415V	33kA	22x57mm Ferrule	Each	20
647845	25A (25KR85)	Bussmann	India	25A	415V	33kA	22x57mm Ferrule	Each	20
647853	30A (30KR85)	Bussmann	India	30A	415V	33kA	22x57mm Ferrule	Each	20
647861	40A (40KR85)	Bussmann	India	40A	415V	33kA	22x57mm Ferrule	Each	20
647888	45A (45KR85)	Bussmann	India	45A	415V	33kA	22x57mm Ferrule	Each	20
647896	50A (50KR85)	Bussmann	India	50A	415V	33kA	22x57mm Ferrule	Each	20
647918	60A (60KR85)	Bussmann	India	60A	415V	33kA	22x57mm Ferrule	Each	20
647926	80A (80KR85)	Bussmann	India	80A	415V	33kA	22x57mm Ferrule	Each	20
647934	100A (100KR85)	Bussmann	India	100A	415V	33kA	22x57mm Ferrule	Each	20



NH00 3P3P Front



NH1 3P3P Open



NH00 3P3P Back

BUSSMANN DIN FUSE DISCONNECTS

Part Number	Description	Brand	Origin	CB Code	Amps	Poles	Phase	Standard	Unit	Box Qty
Horizontal 3 Pole (Three Phase)										
697079	NH00 160A Switch	Eaton -Bussmann	Poland	EBH000TM8	160A	3	Three	IEC 60947-1	Each	1
697087	NH1 250A Switch	Eaton -Bussmann	Poland	EBH103TM1	250A	3	Three	IEC 60947-1	Each	1
697095	NH2 400A Switch	Eaton -Bussmann	Poland	EBH203TM1	400A	3	Three	IEC 60947-1	Each	1
697109	NH3 630A Switch	Eaton -Bussmann	Poland	EBH303TM2	630A	3	Three	IEC 60947-1	Each	1



Solid Link Blade



NH000

DIN SOLID LINK & NH000 HRC FUSES (CLASS gG)

Part Number	Description	Brand	Origin	Amps	Volts	Break	Configuration	Unit	Box Qty
Solid Link Blades									
688983	160A Solid Link 00 (SDL00)	Bussmann	India	160A	500V	120kA	Solid Link	Each	3
657115	250A Solid Link 1 (SDL1)	Bussmann	India	250A	500V	120kA	Solid Link	Each	3
689300	400A Solid Link 2 (SDL2)	Bussmann	India	400A	500V	120kA	Solid Link	Each	3
657131	630A Solid Link 3 (SDL3)	Bussmann	India	630A	500V	120kA	Solid Link	Each	3
NH000 DIN Fuselinks									
688584	10A NH000 (10NHG000B)	Bussmann	India	10A	500V	120kA	DIN Blade	Each	3
690317	16A NH000 (16NHG000B)	Bussmann	India	16A	500V	120kA	DIN Blade	Each	3
689130	20A NH000 (20NHG000B)	Bussmann	India	20A	500V	120kA	DIN Blade	Each	3
689149	32A NH000 (32NHG000B)	Bussmann	India	32A	500V	120kA	DIN Blade	Each	3
689238	40A NH000 (40NHG000B)	Bussmann	India	40A	500V	120kA	DIN Blade	Each	3
689165	50A NH000 (50NHG000B)	Bussmann	India	50A	500V	120kA	DIN Blade	Each	3
689173	63A NH000 (63NHG000B)	Bussmann	India	63A	500V	120kA	DIN Blade	Each	3
689181	80A NH000 (80NHG000B)	Bussmann	India	80A	500V	120kA	DIN Blade	Each	3
689203	100A NH000 (100NHG000B)	Bussmann	India	100A	500V	120kA	DIN Blade	Each	3



NH00



NH0

DIN NH00 & NH0 HRC FUSES (CLASS gG)

Part Number	Description	Brand	Origin	Amps	Volts	Break	Configuration	Unit	Box Qty
NH00 DIN Fuselinks									
689211	125A NH00 (125NHG00B)	Bussmann	India	125A	500V	120kA	DIN Blade	Each	3
689491	160A NH00 (160NHG00B)	Bussmann	India	160A	500V	120kA	DIN Blade	Each	3
NH0 DIN Fuselinks									
665290	10A NH0 (16NHG0B)	Bussmann	India	10A	500V	120kA	Blade Type	Each	3
689378	16A NH0 (16NHG0B)	Bussmann	India	16A	500V	120kA	Blade Type	Each	3
689831	20A NH0 (20NHG0B)	Bussmann	India	20A	500V	120kA	Blade Type	Each	3
688576	25A NH0 (25NHG0B)	Bussmann	India	25A	500V	120kA	Blade Type	Each	3
693162	32A NH0 (32NHG0B)	Bussmann	India	32A	500V	120kA	Blade Type	Each	3
689963	40A NH0 (40NHG0B)	Bussmann	India	40A	500V	120kA	Blade Type	Each	3
689858	50A NH0 (50NHG0B)	Bussmann	India	50A	500V	120kA	Blade Type	Each	3
689319	63A NH0 (63NHG0B)	Bussmann	India	63A	500V	120kA	Blade Type	Each	3
689327	80A NH0 (80NHG0B)	Bussmann	India	80A	500V	120kA	Blade Type	Each	3
689335	100A NH0 (100NHG0B)	Bussmann	India	100A	500V	120kA	Blade Type	Each	3
689343	125A NH0 (125NHG0B)	Bussmann	India	125A	500V	120kA	Blade Type	Each	3
689351	160A NH0 (160NHG0B)	Bussmann	India	160A	500V	120kA	Blade Type	Each	3



NH1



Top



Side

DIN NH1 HRC FUSES (CLASS gG)

Part Number	Description	Brand	Origin	Amps	Volts	Break	Configuration	Unit	Box Qty
NH1 DIN Fuselinks									
689866	16A NH1 (16NHG01B)	Bussmann	India	16A	500V	120kA	Blade Type	Each	3
689688	20A NH1 (20NHG01B)	Bussmann	India	20A	500V	120kA	Blade Type	Each	3
689432	25A NH1 (25NHG01B)	Bussmann	India	25A	500V	120kA	Blade Type	Each	3
692530	32A NH1 (32NHG01B)	Bussmann	India	32A	500V	120kA	Blade Type	Each	3
686700	40A NH1 (40NHG01B)	Bussmann	India	40A	500V	120kA	Blade Type	Each	3
689416	50A NH1 (50NHG01B)	Bussmann	India	50A	500V	120kA	Blade Type	Each	3
689424	63A NH1 (63NHG01B)	Bussmann	India	63A	500V	120kA	Blade Type	Each	3
689084	80A NH1 (80NHG01B)	Bussmann	India	80A	500V	120kA	Blade Type	Each	3
689440	100A NH1 (100NHG01B)	Bussmann	India	100A	500V	120kA	Blade Type	Each	3
689459	125A NH1 (125NHG01B)	Bussmann	India	125A	500V	120kA	Blade Type	Each	3
689467	160A NH1 (160NHG01B)	Bussmann	India	160A	500V	120kA	Blade Type	Each	3
689475	200A NH1 (200NHG1B)	Bussmann	India	200A	500V	120kA	Blade Type	Each	3
661066	224A NH1 (224NHG1B)	Bussmann	India	224A	500V	120kA	Blade Type	Each	3
689939	250A NH1 (250NHG1B)	Bussmann	India	250A	500V	120kA	Blade Type	Each	3



NH2



NH3

DIN NH2 & NH3 HRC FUSES (CLASS gG)

Part Number	Description	Brand	Origin	Amps	Volts	Break	Configuration	Unit	Box Qty
NH2 DIN Fuselinks									
686735	50A NH2 (50NHG02B)	Bussmann	India	50A	500V	120kA	Blade Type	Each	3
689548	63A NH2 (63NHG02B)	Bussmann	India	63A	500V	120kA	Blade Type	Each	3
689998	80A NH2 (80NHG02B)	Bussmann	India	80A	500V	120kA	Blade Type	Each	3
689882	100A NH2 (100NHG02B)	Bussmann	India	100A	500V	120kA	Blade Type	Each	3
689564	125A NH2 (125NHG02B)	Bussmann	India	125A	500V	120kA	Blade Type	Each	3
689572	160A NH2 (160NHG02B)	Bussmann	India	160A	500V	120kA	Blade Type	Each	3
689580	200A NH2 (200NHG02B)	Bussmann	India	200A	500V	120kA	Blade Type	Each	3
685860	224A NH2 (224NHG02B)	Bussmann	India	224A	500V	120kA	Blade Type	Each	3
689890	250A NH2 (250NHG02B)	Bussmann	India	250A	500V	120kA	Blade Type	Each	3
689610	315A NH2 (315NHG2B)	Bussmann	India	315A	500V	120kA	Blade Type	Each	3
689629	355A NH2 (355NHG2B)	Bussmann	India	355A	500V	120kA	Blade Type	Each	3
689637	400A NH2 (400NHG2B)	Bussmann	India	400A	500V	120kA	Blade Type	Each	3
NH3 DIN Fuselinks									
689645	315A NH3 (315NHG03B)	Bussmann	India	315A	500V	120kA	Blade Type	Each	3
689556	355A NH3 (355NHG03B)	Bussmann	India	355A	500V	120kA	Blade Type	Each	3
689599	400A NH3 (400NHG03B)	Bussmann	India	400A	500V	120kA	Blade Type	Each	3
689696	500A NH3 (500NHG3B)	Bussmann	India	500A	500V	120kA	Blade Type	Each	3
689718	630A NH3 (630NHG3B)	Bussmann	India	630A	500V	120kA	Blade Type	Each	3



300-1



160MJ29

76mm J-TYPE FUSELINKS & CARRIERS

Part Number	Description	Brand	Origin	Amps	Volts	Fixing Centre	Standard	Unit	Box Qty	
76mm J-Type Fuselinks										
647233	63A 76mm (63MJ29-6)	Bussmann	India	63A	415V	76mm	IEC 60269-1	Each	5	
647268	100A 76mm (100MJ29-6)	Bussmann	India	100A	415V	76mm	IEC 60269-1	Each	5	
647276	125A 76mm (125MJ29-6)	Bussmann	India	125A	415V	76mm	IEC 60269-1	Each	5	
647284	160A 76mm (160MJ29-6)	Bussmann	India	160A	415V	76mm	IEC 60269-1	Each	5	
647292	200A 76mm (200MJ29-6)	Bussmann	India	200A	415V	76mm	IEC 60269-1	Each	5	
647306	250A 76mm (250MJ29-6)	Bussmann	India	250A	415V	76mm	IEC 60269-1	Each	5	
Part Number	Description	Brand	Origin	Amps	Colour	Construction	Standard	Unit	Weight	Box Qty
Carrier for J-Type 76mm Fuses										
468622*	NZI 300-1 Shrouded Carrier	NZI	NZ	200A	White	Porcelain & ETPNFM	AS/NZS 3947	Each	600g	1

* Limited stock available.



325-7



325 Shorting Link



325-5



200MJ30-7

82mm J-TYPE FUSELINKS & CARRIERS

Part Number	Description	Brand	Origin	Amps	Volts	Fixing Centre	Standard	Unit	Box Qty
82mm J-Type Fuselinks									
647373	32A 82mm (32MJ30-8)	Bussmann	India	32A	415V	82mm	IEC 60269-1	Each	5
647381	40A 82mm (40MJ30-8)	Bussmann	India	40A	415V	82mm	IEC 60269-1	Each	5
647403	63A 82mm (63MJ30-8)	Bussmann	India	63A	415V	82mm	IEC 60269-1	Each	5
647411	80A 82mm (80MJ30-7)	Bussmann	India	80A	415V	82mm	IEC 60269-1	Each	5
647438	100A 82mm (100MJ30-7)	Bussmann	India	100A	415V	82mm	IEC 60269-1	Each	5
647446	125A 82mm (125MJ30-7)	Bussmann	India	125A	415V	82mm	IEC 60269-1	Each	5
647454	160A 82mm (160MJ30-7)	Bussmann	India	160A	415V	82mm	IEC 60269-1	Each	5
647462	200A 82mm (200MJ30-7)	Bussmann	India	200A	415V	82mm	IEC 60269-1	Each	5
647470	250A 82mm (250MJ30-7)	Bussmann	India	250A	415V	82mm	IEC 60269-1	Each	5
647489	315A 82mm (315MJ30-7)	Bussmann	India	315A	415V	82mm	IEC 60269-1	Each	5
647659	355A 82mm (355PJ30-7)	Bussmann	India	355A	415V	82mm	IEC 60269-1	Each	5
647667	400A 82mm (400PJ30-7)	Bussmann	India	400A	415V	82mm	IEC 60269-1	Each	5

Part Number	Description	Brand	Origin	Amps	Colour	Construction	Standard	Unit	Weight	Box Qty
Carrier for J-Type 82mm Fuses										
468592	NZI 325-5 Unshrouded Carrier	NZI	NZ	400A	Grey	Porcelain & ETPNFM	AS/NZS 3947	Each	900g	1
468614	NZI 325-7 Shrouded Carrier	NZI	NZ	400A	White	Porcelain & ETPNFM	AS/NZS 3947	Each	1.1kg	1
469726	NZI 325 Slotted Shorting Link	NZI	NZ	400A		Copper ETP	AS/NZS 3947	Each	110g	1



315MJ31-7



3625-7



3625-7 Top View

92mm J-TYPE FUSELINKS & CARRIERS

Part Number	Description	Brand	Origin	Amps	Volts	Fixing Centre	Standard	Unit	Box Qty	
92mm J-Type Fuselinks										
658650	32A 92mm (32MJ31-8)	Bussmann	India	32A	415V	92mm	IEC 60269-1	Each	5	
647535	40A 92mm (40MJ31-8)	Bussmann	India	40A	415V	92mm	IEC 60269-1	Each	5	
647543	63A 92mm (63MJ31-8)	Bussmann	India	63A	415V	92mm	IEC 60269-1	Each	5	
647551	80A 92mm (80MJ31-7)	Bussmann	India	80A	415V	92mm	IEC 60269-1	Each	5	
647578	100A 92mm (100MJ31-7)	Bussmann	India	100A	415V	92mm	IEC 60269-1	Each	5	
647586	125A 92mm (125MJ31-7)	Bussmann	India	125A	415V	92mm	IEC 60269-1	Each	5	
647594	160A 92mm (160MJ31-7)	Bussmann	India	160A	415V	92mm	IEC 60269-1	Each	5	
647608	200A 92mm (200MJ31-7)	Bussmann	India	200A	415V	92mm	IEC 60269-1	Each	5	
647616	250A 92mm (250MJ31-7)	Bussmann	India	250A	415V	92mm	IEC 60269-1	Each	5	
647624	315A 92mm (315MJ31-7)	Bussmann	India	315A	415V	92mm	IEC 60269-1	Each	5	
647675	355A 92mm (355PJ31-7)	Bussmann	India	355A	415V	92mm	IEC 60269-1	Each	5	
647683	400A 92mm (400PJ31-7)	Bussmann	India	400A	415V	92mm	IEC 60269-1	Each	5	
658782	450A 92mm (450RJ31-7)	Bussmann	India	450A	415V	92mm	IEC 60269-1	Each	5	
647756	500A 92mm (500RJ31-7)	Bussmann	India	500A	415V	92mm	IEC 60269-1	Each	5	
658804	560A 92mm (560SJ31-6)	Bussmann	India	560A	415V	92mm	IEC 60269-1	Each	5	
647772	630A 92mm (630SJ31-6)	Bussmann	India	630A	415V	92mm	IEC 60269-1	Each	5	
Part Number	Description	Brand	Origin	Amps	Colour	Construction	Standard	Unit	Weight	Box Qty
Carrier for J-Type 92mm Fuses										
471011	NZI 3625-7 Shrouded Carrier	NZI	NZ	600A	White	Porcelain & ETPNFM	AS/NZS 3947	Each	1.5kg	1



C10G16 and C10G32 10x38

CYLINDRICAL 10x38 FUSELINKS (CLASS gG)

Part Number	Description	Brand	Origin	Amps	Volts	Break	Configuration	Unit	Box Qty
10x38 HRC Fuselinks									
654574	1A 10x38 Fuse (C10G1)	Bussmann	India	1A	500V	120kA	10x38mm Cylinder	Each	10
654299	2A 10x38 Fuse (C10G2)	Bussmann	India	2A	500V	120kA	10x38mm Cylinder	Each	10
654388	4A 10x38 Fuse (C10G4)	Bussmann	India	4A	500V	120kA	10x38mm Cylinder	Each	10
654302	6A 10x38 Fuse (C10G6)	Bussmann	India	6A	500V	120kA	10x38mm Cylinder	Each	10
654310	10A 10x38 Fuse (C10G10)	Bussmann	India	10A	500V	120kA	10x38mm Cylinder	Each	10
654329	16A 10x38 Fuse (C10G16)	Bussmann	India	16A	500V	120kA	10x38mm Cylinder	Each	10
654337	20A 10x38 Fuse (C10G20)	Bussmann	India	20A	500V	120kA	10x38mm Cylinder	Each	10
654353	25A 10x38 Fuse (C10G25)	Bussmann	India	25A	500V	120kA	10x38mm Cylinder	Each	10
654345	32A 10x38 Fuse (C10G32)	Bussmann	India	32A	400V	120kA	10x38mm Cylinder	Each	10
Fuseholder for 10x38 Fuses (IEC 60269/60947)									
666858	CHM1DU Fuseholder	Bussmann	China	32A	690V	120kA	10x38mm Cylinder	Each	12



BS88 'T' TYPE HIGH-SPEED 240V SEMI-CONDUCTOR HRC FUSELINKS

Part Number	Description	Brand	Origin	Amps	Volts AC	Volts DC	Fixing Centre	A2T	Unit	Box Qty
240V LCT High Speed Fuses										
684848	6LCT	Bussmann	India	6A	240V	150V	38mm	9	Each	20
684856	10LCT	Bussmann	India	10A	240V	150V	38mm	22	Each	20
684880	12LCT	Bussmann	India	12A	240V	150V	38mm	32	Each	20
684864	16LCT	Bussmann	India	16A	240V	150V	38mm	100	Each	20
684872	20LCT	Bussmann	India	20A	240V	150V	38mm	160	Each	20
240V LET High Speed Fuses										
685003	25LET	Bussmann	India	25A	240V	150V	42mm	250	Each	10
685011	32LET	Bussmann	India	32A	240V	150V	42mm	450	Each	10
685038	35LET	Bussmann	India	35A	240V	150V	42mm	600	Each	10
684937	50LET	Bussmann	India	50A	240V	150V	42mm	1400	Each	10
685046	63LET	Bussmann	India	63A	240V	150V	42mm	2200	Each	10
685054	80LET	Bussmann	India	80A	240V	150V	42mm	3800	Each	10
685062	100LET	Bussmann	India	100A	240V	150V	42mm	7500	Each	10
685070	125LET	Bussmann	India	125A	240V	150V	42mm	7500	Each	10
685089	160LET	Bussmann	India	160A	240V	150V	42mm	16000	Each	10
685097	180LET	Bussmann	India	180A	240V	150V	42mm	29000	Each	10
240V LMT High Speed Fuses										
685275	160LMT	Bussmann	India	160A	240V	150V	59mm	16000	Each	1
685283	200LMT	Bussmann	India	200A	240V	150V	59mm	20000	Each	1
685291	250LMT	Bussmann	India	250A	240V	150V	59mm	40000	Each	1
685305	315LMT	Bussmann	India	315A	240V	150V	59mm	75000	Each	1
685313	355LMT	Bussmann	India	355A	240V	150V	59mm	100000	Each	1
685321	400LMT	Bussmann	India	400A	240V	150V	59mm	160000	Each	1
685348	450LMT	Bussmann	India	450A	240V	150V	59mm	220000	Each	1

BUSSMANN CT/FE/FEE/FM High Speed Fuses



BS88 'T' TYPE HIGH-SPEED 690V SEMI-CONDUCTOR HRC FUSELINKS

Part Number	Description	Brand	Origin	Amps	Volts AC	Volts DC	Fixing Centre	A2T	Unit	Box Qty
690V CT High Speed Fuses										
690686	6CT	Bussmann	India	6A	690V	500V	64mm	12	Each	20
690694	10CT	Bussmann	India	10A	690V	500V	64mm	48	Each	20
690708	12CT	Bussmann	India	12A	690V	500V	64mm	65	Each	20
690716	16CT	Bussmann	India	16A	690V	500V	64mm	110	Each	20
690724	20CT	Bussmann	India	20A	690V	500V	64mm	220	Each	20
690V FE High Speed Fuses										
690791	35FE	Bussmann	India	35A	690V	500V	64mm	200	Each	20
690805	40FE	Bussmann	India	40A	690V	500V	64mm	200	Each	20
690813	45FE	Bussmann	India	45A	690V	500V	64mm	200	Each	20
690821	50FE	Bussmann	India	50A	690V	500V	64mm	200	Each	20
690848	63FE	Bussmann	India	63A	690V	500V	64mm	200	Each	20
690V FEE High Speed Fuses										
690899	100FEE	Bussmann	India	100A	690V	500V	70mm	2400	Each	5
690902	120FEE	Bussmann	India	120A	690V	500V	70mm	3100	Each	5
684503	140FEE	Bussmann	India	140A	690V	500V	70mm	3800	Each	5
690910	160FEE	Bussmann	India	160A	690V	500V	70mm	5700	Each	5
691003	200FEE	Bussmann	India	200A	690V	500V	70mm	11400	Each	5
690V FM High Speed Fuses										
690937	180FM	Bussmann	India	180A	690V	500V	85mm	13500	Each	1
690945	200FM	Bussmann	India	200A	690V	500V	85mm	18500	Each	1
691801	225FM	Bussmann	India	225A	690V	500V	85mm	26500	Each	1
690953	250FM	Bussmann	India	250A	690V	500V	85mm	37500	Each	1
690961	280FM	Bussmann	India	280A	690V	500V	85mm	55000	Each	1
690988	315FM	Bussmann	India	315A	690V	500V	85mm	77000	Each	1



2NZ01



4NZ01



25NZ02



35NZ02

NEOZED DO HRC FUSELINKS (CLASS gG) TO AS/NZS 60269

Part Number	Description	Brand	Origin	Amps	Volts	Length	Width	Unit	Box Qty
Neozed D01 Bottle Fuses									
687855	2NZ01	Bussmann	India	2A	440V	36mm	11mm	Each	10
687863	4NZ01	Bussmann	India	4A	440V	36mm	11mm	Each	10
687820	6NZ01	Bussmann	India	6A	440V	36mm	11mm	Each	10
687839	10NZ01	Bussmann	India	10A	440V	36mm	11mm	Each	10
687847	16NZ01	Bussmann	India	16A	440V	36mm	11mm	Each	10
Neozed D02 Bottle Fuses									
687901	20NZ02	Bussmann	India	20A	440V	36mm	15mm	Each	10
687928	25NZ02	Bussmann	India	25A	440V	36mm	15mm	Each	10
687936	35NZ02	Bussmann	India	35A	440V	36mm	15mm	Each	10
687944	50NZ02	Bussmann	India	50A	440V	36mm	15mm	Each	10
687952	63NZ02	Bussmann	India	63A	440V	36mm	15mm	Each	10

BUSSMANN Diazed D16/D27 Bottle Fuses



DIAZED ND HRC FUSELINKS (CLASS gG) TO AS/NZS 60269

Part Number	Description	Brand	Origin	Amps	Volts	Length	Width	Nib Diameter	Unit	Box Qty
Diazed D16 Bottle Fuses										
690597	2D16	Bussmann	India	2A	500V	50mm	13.2mm	6mm	Each	5
690600	4D16	Bussmann	India	4A	500V	50mm	13.2mm	6mm	Each	5
690619	6D16	Bussmann	India	6A	500V	50mm	13.2mm	6mm	Each	5
690627	10D16	Bussmann	India	10A	500V	50mm	13.2mm	8mm	Each	5
690635	16D16	Bussmann	India	16A	500V	50mm	13.2mm	10mm	Each	5
690643	20D16	Bussmann	India	20A	500V	50mm	13.2mm	12mm	Each	5
690651	25D16	Bussmann	India	25A	500V	50mm	13.2mm	14mm	Each	5
Diazed D27 Bottle Fuses										
688657	2D27	Bussmann	India	2A	500V	50mm	21.5mm	6mm	Each	5
688665	4D27	Bussmann	India	4A	500V	50mm	21.5mm	6mm	Each	5
688673	6D27	Bussmann	India	6A	500V	50mm	21.5mm	6mm	Each	5
688681	10D27	Bussmann	India	10A	500V	50mm	21.5mm	8mm	Each	5
688703	16D27	Bussmann	India	16A	500V	50mm	21.5mm	10mm	Each	5
688711	20D27	Bussmann	India	20A	500V	50mm	21.5mm	12mm	Each	5
688738	25D27	Bussmann	India	25A	500V	50mm	21.5mm	14mm	Each	5



12kV MV Air

WEATHER-SEALED MV HRC FUSELINKS FOR USE IN AIR

Part Number	Description	Brand	Origin	Amps	Volts	Break Capacity	Dimensions	Configuration	Unit	Box Qty
MV 12kV Fuselinks for use in Air										
671142	6.3A Air (12BDGHA6.3)	Bussmann	India	6.3A	12kV	40kA	359Lx51Dmm	Ferrule	Each	3
670154	10A Air (12BDGHA10)	Bussmann	India	10A	12kV	40kA	359Lx51Dmm	Ferrule	Each	3
671150	16A Air (12BDGHA16)	Bussmann	India	16A	12kV	40kA	359Lx51Dmm	Ferrule	Each	3
671169	20A Air (12BDGHA20)	Bussmann	India	20A	12kV	40kA	359Lx51Dmm	Ferrule	Each	3
671371	25A Air (12BDGHA25)	Bussmann	India	25A	12kV	40kA	359Lx51Dmm	Ferrule	Each	3
670375	31.5A Air (12BDGHA31.5)	Bussmann	India	31.5A	12kV	40kA	359Lx51Dmm	Ferrule	Each	3
671177	40A Air (12BDGHA40)	Bussmann	India	40A	12kV	40kA	359Lx51Dmm	Ferrule	Each	3
671185	50A Air (12BDGHA50)	Bussmann	India	50A	12kV	40kA	359Lx51Dmm	Ferrule	Each	3
671398	56A Air (12BFGHA56)	Bussmann	India	56A	12kV	40kA	359Lx76Dmm	Ferrule	Each	3
671401	63A Air (12BFGHA63)	Bussmann	India	63A	12kV	40kA	359Lx76Dmm	Ferrule	Each	3
671193	80A Air (12BFGHA80)	Bussmann	India	80A	12kV	40kA	359Lx76Dmm	Ferrule	Each	3
670685	90A Air (12BFGHA90)	Bussmann	India	90A	12kV	40kA	359Lx76Dmm	Ferrule	Each	3
671207	100A Air (12BFGHA100)	Bussmann	India	100A	12kV	40kA	359Lx76Dmm	Ferrule	Each	3
671215	125A Air (12AKGHA125)	Bussmann	India	125A	12kV	40kA	359Lx76Dmm	Ferrule	Each	3

Fuses on this page comply to BS 2692-1 Standard



12kV MV Oil

MV HRC FUSELINKS FOR USE IN OIL SWITCHGEAR

Part Number	Description	Brand	Origin	Amps	Volts	Break Capacity	Dimensions	Configuration	Unit	Box Qty
MV 12kV Fuselinks for use in Oil										
670251	6.3A Oil (120EFMA6.3)	Busmann	India	6.3A	12kV	40kA	254Lx63.5Dmm	Ferrule	Each	3
670243	10A Oil (120EFMA10)	Busmann	India	10A	12kV	40kA	254Lx63.5Dmm	Ferrule	Each	3
670278	16A Oil (120EFMA16)	Busmann	India	16A	12kV	40kA	254Lx63.5Dmm	Ferrule	Each	3
670286	20A Oil (120EFMA20)	Busmann	India	20A	12kV	40kA	254Lx63.5Dmm	Ferrule	Each	3
670065	25A Oil (120EFMA25)	Busmann	India	25A	12kV	40kA	254Lx63.5Dmm	Ferrule	Each	3
670073	31.5A Oil (120EFMA31.5)	Busmann	India	31.5A	12kV	40kA	254Lx63.5Dmm	Ferrule	Each	3
670081	40A Oil (120EFMA40)	Busmann	India	40A	12kV	40kA	254Lx63.5Dmm	Ferrule	Each	3
670006	50A Oil (120EFMA50)	Busmann	India	50A	12kV	40kA	254Lx63.5Dmm	Ferrule	Each	3
670014	63A Oil (120EFMA63)	Busmann	India	63A	12kV	40kA	254Lx63.5Dmm	Ferrule	Each	3
670111	71A Oil (120HFMA71)	Busmann	India	71A	12kV	40kA	254Lx63.5Dmm	Ferrule	Each	3
670138	80A Oil (120HFMA80)	Busmann	India	80A	12kV	40kA	254Lx63.5Dmm	Ferrule	Each	3
671118	90A Oil (120HFMA90)	Busmann	India	90A	12kV	40kA	254Lx63.5Dmm	Ferrule	Each	3
670537	100A Oil (120HFMA100)	Busmann	India	100A	12kV	40kA	254Lx63.5Dmm	Ferrule	Each	3
671126	125A Oil (120LGMA125)	Busmann	India	125A	12kV	40kA	359Lx63.5Dmm	Ferrule	Each	3
671134	160A Oil (120LGMA160)	Busmann	India	160A	12kV	40kA	359Lx63.5Dmm	Ferrule	Each	3

Fuses on this page comply to IEC 60282-1 & BS 2692-1 Standards



12kV MV Back Up

WEATHER-SEALED MV HRC BACK UP FUSELINKS

Part Number	Description	Brand	Origin	Amps	Volts	Break Capacity	Dimensions	Configuration	Unit	Box Qty
MV 12kV Fuselinks – Back Up										
671223	6.3A Back Up (12TDLEJ6.3)	Bussmann	India	6.3A	12kV	63kA	292Lx51Dmm	Ferrule	Each	3
671231	10A Back Up (12TDLEJ10)	Bussmann	India	10A	12kV	63kA	292Lx51Dmm	Ferrule	Each	3
671258	16A Back Up (12TDLEJ16)	Bussmann	India	16A	12kV	63kA	292Lx51Dmm	Ferrule	Each	3
671266	20A Back Up (12TDLEJ20)	Bussmann	India	20A	12kV	63kA	292Lx51Dmm	Ferrule	Each	3
671274	25A Back Up (12TDLEJ25)	Bussmann	India	25A	12kV	63kA	292Lx51Dmm	Ferrule	Each	3
671282	31.5A Back Up (12TDLEJ31.5)	Bussmann	India	31.5A	12kV	63kA	292Lx51Dmm	Ferrule	Each	3
671290	40A Back Up (12TDLEJ40)	Bussmann	India	40A	12kV	63kA	292Lx51Dmm	Ferrule	Each	3
671304	50A Back Up (12TDLEJ50)	Bussmann	India	50A	12kV	63kA	292Lx51Dmm	Ferrule	Each	3
671312	63A Back Up (12TDLEJ63)	Bussmann	India	63A	12kV	63kA	292Lx51Dmm	Ferrule	Each	3
671320	80A Back Up (12THLEJ80)	Bussmann	India	80A	12kV	63kA	292Lx67Dmm	Ferrule	Each	3
671339	100A Back Up (12THLEJ100)	Bussmann	India	100A	12kV	63kA	292Lx67Dmm	Ferrule	Each	3
671347	125A Back Up (12TKLEJ125)	Bussmann	India	125A	12kV	63kA	292Lx76Dmm	Ferrule	Each	3
671355	160A Back Up (12TXLEJ160)	Bussmann	India	160A	12kV	63kA	292Lx88Dmm	Ferrule	Each	3
671363	200A Back Up (12TXLEJ200)	Bussmann	India	200A	12kV	63kA	292Lx88Dmm	Ferrule	Each	3

Fuses on this page comply to IEC 60282-4 & DIN 43265 Standards



12kV MV Full Range

MV HRC FULL RANGE FUSELINKS

Part Number	Description	Brand	Origin	Amps	Volts	Break Capacity	Dimensions	Configuration	Unit	Box Qty
MV 12kV Fuselinks – Full Range										
670545	6.3A Full Range (12FDLSJ6.3)	Bussmann	UK	6.3A	12kV	50kA	292Lx51Dmm	Ferrule	Each	3
670553	10A Full Range (12FDLSJ10)	Bussmann	UK	10A	12kV	50kA	292Lx51Dmm	Ferrule	Each	3
670642	16A Full Range (12FDLSJ16)	Bussmann	UK	16A	12kV	50kA	292Lx51Dmm	Ferrule	Each	3
670502	20A Full Range (12FDLSJ20)	Bussmann	UK	20A	12kV	50kA	292Lx51Dmm	Ferrule	Each	3
671010	25A Full Range (12FDLSJ25)	Bussmann	UK	25A	12kV	50kA	292Lx51Dmm	Ferrule	Each	3
670499	31.5A Full Range (12FDLSJ31.5)	Bussmann	UK	31.5A	12kV	50kA	292Lx51Dmm	Ferrule	Each	3
670030	40A Full Range (12FFLSJ40)	Bussmann	UK	40A	12kV	50kA	292Lx76Dmm	Ferrule	Each	3
670510	50A Full Range (12FFLSJ50)	Bussmann	UK	50A	12kV	50kA	292Lx76Dmm	Ferrule	Each	3
670049	63A Full Range (12FFLSJ63)	Bussmann	UK	63A	12kV	50kA	292Lx76Dmm	Ferrule	Each	3
670057	80A Full Range (12FXLSJ80)	Bussmann	UK	80A	12kV	50kA	292Lx88Dmm	Ferrule	Each	3
670529	100A Full Range (12FXLSJ100)	Bussmann	UK	100A	12kV	50kA	292Lx88Dmm	Ferrule	Each	3

Fuses on this page comply to IEC 60282-4 & DIN 43265 Standards



NZI Fused Streetlight Panel



NZI Fused Streetlight Panel – Side View



NZI Double Fused Streetlight Panel



NZI 60A 4 Way Domestic Panel



NZI 60A 4 Way Domestic Panel – Back View

NZI LOW VOLTAGE PANELS

Part Number	Description	Brand	Origin	Assembled	Dimensions	Unit	Box Qty
Low Voltage Panels							
301167	NZI Fused 60A 2W + P Panel	NZI	NZ	Preassembled	120x187mm	Each	1
301175	NZI Fused 60A 3PH Panel	NZI	NZ	Preassembled	110x187mm	Each	1
301191	NZI Fused 60A 6 Fuse Panel	NZI	NZ	Preassembled	270x335mm	Each	1
301574	NZI 60A 4 Way Domestic Panel	NZI	NZ	Preassembled	138x196mm	Each	1
301582	NZI Fused 60A 4 Fuse Domestic Panel	NZI	NZ	Preassembled	220x335mm	Each	1
301906	NZI Fused 100A 3 Phase Panel	NZI	NZ	Preassembled	145x205mm	Each	1
301914	NZI Fused 100A 3 Phase with Stud Panel	NZI	NZ	Preassembled	155x187mm	Each	1
301922*	NZI Fused Industrial 60/200A Panel	NZI	NZ	Preassembled	220x335mm	Each	1
302007	NZI Transformer LT Panel	NZI	NZ	Preassembled	350x540mm	Each	1
302015*	NZI Fused Streetlight Panel	NZI	NZ	Preassembled	267x50mm	Each	1
302619	NZI Double Fused Streetlight Panel	NZI	NZI	Preassembled	267x50mm	Each	1

* Limited stock available.

We can make to order any configuration to meet customers' requirements.



TYPE T EXPULSION FUSE

Part Number	Description	Brand	Amps	Volts	Unit	Bag Qty
673358	15TBR1	Bussmann/NZI	1A	15kV	1	1
673366	15TBR2	Bussmann/NZI	2A	15kV	1	1
673374	15TBR3	Bussmann/NZI	3A	15kV	1	1
673382	15TBR5	Bussmann/NZI	5A	15kV	1	1
673390	15TBR6	Bussmann/NZI	6A	15kV	1	1
673498	15TBR8	Bussmann/NZI	8A	15kV	1	1
673501	15TBR10	Bussmann/NZI	10A	15kV	1	1
673528	15TBR12	Bussmann/NZI	12A	15kV	1	1
673536	15TBR15	Bussmann/NZI	15A	15kV	1	1
673544	15TBR20	Bussmann/NZI	20A	15kV	1	1
673552	15TBR25	Bussmann/NZI	25A	15kV	1	1
673560	15TBR30	Bussmann/NZI	30A	15kV	1	1
673579	15TBR40	Bussmann/NZI	40A	15kV	1	1
673587	15TBR50	Bussmann/NZI	50A	15kV	1	1
673595	15TBR60	Bussmann/NZI	60A	15kV	1	1
673609	15TBR65	Bussmann/NZI	65A	15kV	1	1
673617	15TBR75	Bussmann/NZI	75A	15kV	1	1
673625	15TBR80	Bussmann/NZI	80A	15kV	1	1
673633	15TBR100	Bussmann/NZI	100A	15kV	1	1



Type K Expulsion Fuse Link



Clear Amperage Labelling

Removable Button Head and Crimped Wiring

TYPE K EXPULSION FUSE

Part Number	Description	Brand	Amps	Volts	Unit	Bag Qty
674036	15KBR1	Bussmann/NZI	1 A	15kV	1	1
674044	15KBR2	Bussmann/NZI	2 A	15kV	1	1
674052	15KBR3	Bussmann/NZI	3 A	15kV	1	1
674060	15KBR5	Bussmann/NZI	5 A	15kV	1	1
674079	15KBR6	Bussmann/NZI	6 A	15kV	1	1
674087	15KBR8	Bussmann/NZI	8 A	15kV	1	1
674095	15KBR10	Bussmann/NZI	10 A	15kV	1	1
674109	15KBR12	Bussmann/NZI	12 A	15kV	1	1
674117	15KBR15	Bussmann/NZI	15 A	15kV	1	1
674125	15KBR20	Bussmann/NZI	20 A	15kV	1	1
674133	15KBR25	Bussmann/NZI	25 A	15kV	1	1
674141	15KBR30	Bussmann/NZI	30 A	15kV	1	1
674168	15KBR40	Bussmann/NZI	40 A	15kV	1	1
674176	15KBR50	Bussmann/NZI	50 A	15kV	1	1
674184	15KBR60	Bussmann/NZI	60 A	15kV	1	1
674192	15KBR65	Bussmann/NZI	65 A	15kV	1	1
674206	15KBR75	Bussmann/NZI	75 A	15kV	1	1
674214	15KBR80	Bussmann/NZI	80 A	15kV	1	1
674222	15KBR100	Bussmann/NZI	100 A	15kV	1	1



M8 DMC Standoffs



M10 DMC Standoffs

DMC STANDOFFS WITH STEEL INSERTS (IEC 60660)

Part Number	Description	Brand	Origin	Rating	Inserts	Height	Colour	Construction	Colour	Unit	Weight	Box Qty
M8 DMC Standoffs												
515191*	NZI 6/35/M8 DMC Standoff	NZI	NZ	1.5kV	M8	35mm	Grey	DMC & Zinc-Plated Steel	Grey	Each	95g	12
515221*	NZI 6/38/M8 DMC Standoff	NZI	NZ	1.5kV	M8	38mm	Grey	DMC & Zinc-Plated Steel	Grey	Each	110g	12
515264	NZI 6/45/M8 DMC Standoff	NZI	NZ	1.5kV	M8	45mm	Grey	DMC & Zinc-Plated Steel	Grey	Each	135g	12
514705	NZI 6/50/M8 DMC Standoff	NZI	NZ	1.5kV	M8	50mm	Grey	DMC & Zinc-Plated Steel	Grey	Each	155g	12
M10 DMC Standoffs												
515299*	NZI 6/35/M10 DMC Standoff	NZI	NZ	1.5kV	M10	35mm	Grey	DMC & Zinc-Plated Steel	Grey	Each	90g	12
515329	NZI 6/38/M10 DMC Standoff	NZI	NZ	1.5kV	M10	38mm	Grey	DMC & Zinc-Plated Steel	Grey	Each	105g	12
515353	NZI 6/45/M10 DMC Standoff	NZI	NZ	1.5kV	M10	45mm	Grey	DMC & Zinc-Plated Steel	Grey	Each	130g	12
514772	NZI 6/50/M10 DMC Standoff	NZI	NZ	1.5kV	M10	50mm	Grey	DMC & Zinc-Plated Steel	Grey	Each	150g	12

* Limited stock available.



M6 Busbar Support



M8 Busbar Support



M10 Busbar Support

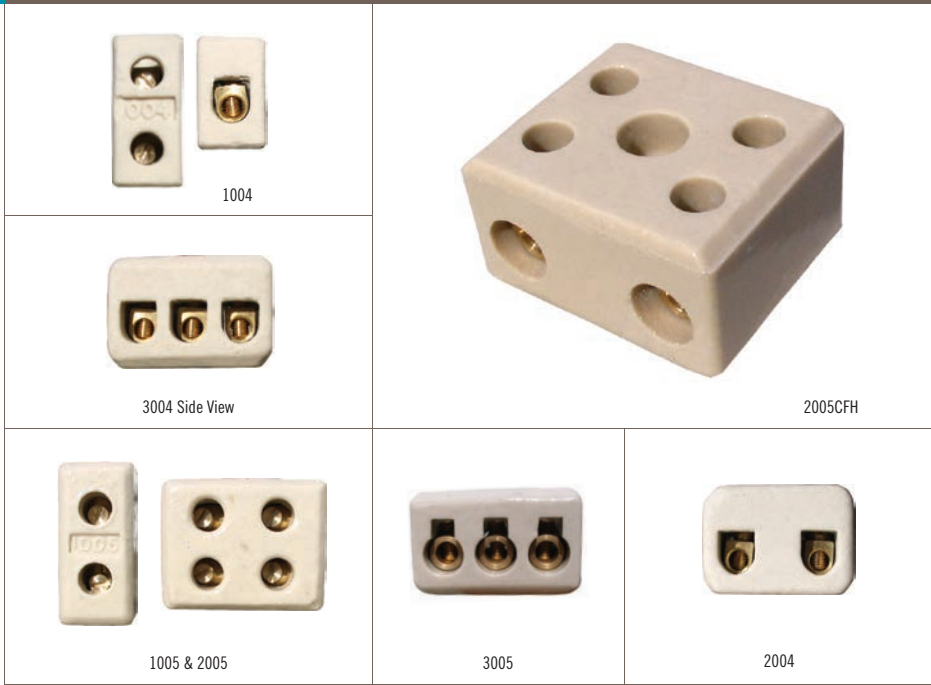


M12 Busbar Support

PORCELAIN BUSBAR SUPPORTS – COMPLETE WITH BOLT (IEC 60273)

Part Number	Description	Brand	Origin	Rating	Bolt	Material	Glaze	Unit	Weight	Box Qty
3kV Busbar Supports										
186104*	NZI M6 Busbar Support	NZI	NZ	3kV	M6	Porcelain & Z/plated Steel	White	Each	171g	6
185043	NZI M8 Busbar Support	NZI	NZ	3kV	M8	Porcelain & Z/plated Steel	White	Each	185g	6
186112	NZI M10 Busbar Support	NZI	NZ	3kV	M10	Porcelain & Z/plated Steel	White	Each	215g	6
186120*	NZI M12 Busbar Support	NZI	NZ	3kV	M12	Porcelain & Z/plated Steel	White	Each	330g	6

* Limited stock available.



1/2/3 WAY PORCELAIN CONNECTORS (AS/NZS 60998)

Part Number	Description	Brand	Origin	Voltage	Rating	Fixing Hole	Glaze	Unit	Weight	Box Qty
15A Connectors										
184012	NZI 1004 1-Way Connector	NZI	NZ	500V	15A	No Fixing Hole	Unglazed	Each	9g	28
184047	NZI 2004 2-Way Connector	NZI	NZ	500V	15A	No Fixing Hole	Clear	Each	16g	18
184063	NZI 2004CFH 2-Way Connector	NZI	NZ	500V	15A	Centre Fixing Hole	Clear	Each	21g	12
184098	NZI 3004 3-Way Connector	NZI	NZ	500V	15A	No Fixing Hole	Clear	Each	23g	12
184128	NZI 3004CFH 3-Way Connector	NZI	NZ	500V	15A	Centre Fixing Hole	Clear	Each	30g	9
30A Connectors										
184144	NZI 1005 1-Way Connector	NZI	NZ	500V	30A	No Fixing Hole	Clear	Each	32g	14
184179	NZI 2005 2-Way Connector	NZI	NZ	500V	30A	No Fixing Hole	Clear	Each	33g	8
184195	NZI 2005CFH 2-Way Connector	NZI	NZ	500V	30A	Centre Fixing Hole	Clear	Each	52g	6
184217	NZI 3005 3-Way Connector	NZI	NZ	500V	30A	No Fixing Hole	Clear	Each	57g	6
184233	NZI 3005CFH 3-Way Connector	NZI	NZ	500V	30A	Centre Fixing Hole	Clear	Each	77g	4
60A Connectors										
184284*	NZI 3006CFH 3-Way Connector	NZI	NZ	500V	60A	Centre Fixing Hole	Clear	Each	150g	1

* Limited stock available.





'R' RESTRICTED MOUNTING LAMP HOLDERS (ES/GES to AS/NZS 60998, BC to AS 3117)

Part Number	Description	Brand	Origin	Voltage	Rating	Mounting	Shrouding	Glaze	Unit	Weight	Box Qty
Bayonet Cap Lampholders (max 250V)											
164046	NZI BC 960 Lampholder	NZI	NZ	240V	5A	External Side	Unshrouded	Clear	Each	70g	8
164054*	NZI BC 961 Lampholder	NZI	NZ	240V	5A	Ext Back (2-Pin Batten)	Unshrouded	Clear	Each	60g	8
Edison Screw Lampholders (max 250V/200W)											
164216	NZI ES 975 Lampholder	NZI	NZ	240V	5A	Internal Back	Unshrouded	Clear	Each	70g	8
164275*	NZI ES T10 Lampholder	NZI	NZ	240V	5A	External Back (HD)	Unshrouded	Clear	Each	75g	8
Giant Edison Screw Lampholders (max 1500W)											
164011	NZI GES 926 Lampholder	NZI	NZ	650V	15A	Internal Back	Shrouded	White	Each	260g	6
164038	NZI GES 926-1 Lampholder	NZI	NZ	650V	15A	Internal Back	Unshrouded	White	Each	245g	6
164380*	NZI GES 926-3 Lampholder	NZI	NZ	650V	15A	Internal Back	Unshrouded	White	Each	225g	6

* Limited stock available.

Motor Circuit Protection Chart

AS 2005, BS88 and IEC 60269

AS NZS 60269

Power (KW)	Horse Power (HP)	Current F.L.C. (AMPS)	Direct On Line		Assisted Start Fuse
			Normal Fuse	Motor Fuse	
0.75	1.0	1.9	6	–	4
1.1	1.5	2.5	10	–	6
1.5	2.0	3.5	16	–	10
2.2	3.0	5.0	20	–	10
3.0	4.0	6.5	20	–	16
4.0	5.5	8.0	25	20M25 G06	16
5.5	7.5	11	32	20M32 G06	20
7.5	10	14	40	32M40 G06	20
11	15	21	50	32M50 H07	25
15	20	28	63	32M63 H07	40
18.5	25	35	80	63M80 K07	40
22	30	40	80	63M100 K07	50
30	40	55	100	63M100 K07	63
37	50	66	125	100M125 L09	80
45	60	80	160	100M160 L09	100
55	75	102	200	–	125
75	100	135	250	200M250 M09	160
90	120	165	250	200M250 M14	200
110	150	200	350	315M400 N09	200
132	180	230	355	–	250
150	200	260	400	–	315
160	220	280	400	–	315
185	250	325	450	400M500 P09	355
200	270	350	500	400M500 P11	400
220	300	385	560	–	450
250	340	450	560	–	450
315	430	545	670	–	560

D.O.L. based on 7 x motor F.L.C. for 10 seconds
Assisted start based on 3.5 x motor F.L.C. for 20 seconds



HRC Fuselinks COMPATIBILITY CHART

107
2018

Certified to BS88 Parts 1 + 2 + 6 (G06 only), IEC 60269-1, Rated Breaking Capacity 80kA

NZI	Bussmann	BS88 Ref	Rating (amps)	Fixing Centres	Compatible With		
G06	NSD		2-20	Staggered	NS	SN2	FE01
G06			25-32	Staggered	NS	SN2	NS
NITD	NITD	A1	2-32	44.5mm	NIT	SA2	NIT
H07	AAO	A2	2-32	73.5mm	TIA	SB2	TIA
K07	BAO	A3	40-63	73mm	TIS	SB4	TIS
K07R	OSD		80-100	73mm			
K09	AD/BD		2-63	111mm	TBC	SF4	TBC
L09	CD	B1	80-100	111mm	TC	SF5	TC
M09	DD	B2	125-200	111mm	TF	SF6	TF
N09	ED	B3	250-315	111mm	TKF	SF7	TKF
L14	CEO		32-100	94mm	TCP	SD5	TCP
M14	DEO		125-200	94mm	TFP	SD6	TFP
N11	EFS		250	133mm	TKM	SG7	TKM
N11	EFS		315	133-184mm	TKM	SG7	TKM
P09	ED	B4	350-400	111mm	TMF	SF8	TMF
P11	EF	C1	350-400	133-184mm	TM	SH8	TM
P12			350-400	165-228mm	TMT	TMT8	TMT
R11	FF		450-630	133-184mm	TTM	SH9	TTM
R12	FG		450-630	165-228mm	TT	TT9	TT
S11	GF	C3	700-800	133-184mm	TLM	SH10	
S12	GG		700-800	165-228mm	TLT	TLT10	TLT
U44			1000-1250	149mm	TXU	SJ11	TXU



**NEW ZEALAND INSULATORS LIMITED**

Established 1924

NZI Customer Service

Phone +64-3-6878100, +64-027-NZI SALE (+64-027-6947253), Fax +64-3-6158125

Office Hours 7.30am – 4.30pm (weekdays NZ Time)

Email sales@nzinsulators.co.nz**NZI Temuka Factory, HQ & South Island Warehouse**

Thomas Street, PO Box 5, Temuka 7948

Phone +64-3-6878100

NZI Auckland Branch & North Island Warehouse

11 Wookey Lane, Kumeu 0891

Phone +64-9-4125941

NZI Brands NZI, AX**Exclusive Distribution in NZ** DTR, Payer, GIG, NGK-S, Fulton and Polesaver.**Shared Distribution in NZ** Avon, Bussmann, Red Spot**Website** www.nzinsulators.co.nz**Timing**

This catalogue was released on 1/1/2018, and all product changes are effective from that date.

Freight & Order Size

There is no minimum order size. All orders exceeding NZ\$1,000 excl GST are freight free New Zealand wide. Orders under \$1,000 are warmly welcomed, but we ask for a freight cost contribution, as per the most recent NZI Freight Rate Card – which is posted & updated on the home page of www.nzinsulators.co.nz. We do ask that whenever possible, orders be made in full-box multiples.

Wholesalers

Wholesalers can buy direct from NZI at Trade Price less a discount. The freight-free threshold for Wholesalers (buying off Trade Price) is NZ\$300 excl GST. Wholesalers who also operate a Network Store need two NZI accounts.

Terms of Trade

Transactions with New Zealand Insulators are made under overarching 'terms of trade' which can be downloaded from the home page of www.nzinsulators.co.nz.

Copyright

This catalogue, our coding, product images and the brands NZI & AX are the intellectual property of New Zealand Insulators Limited.

Thank you for supporting NZI's Temuka factory.

To retain our vital (local) manufacturing capability, please specify NZI brand.



AX



GLOBAL INSULATOR GROUP



Bussmann
by E.T.M.

NEW ZEALAND INSULATORS



TEMUKA

NZI CUSTOMER SERVICES

7.30AM – 4.30PM WEEKDAYS

T +64-3-6878100, +64-027-NZI SALE (+64-027-6947253)

F +64-3-6158125

E sales@nzinsulators.co.nz

HQ & FACTORY

THOMAS STREET

PO BOX 5 TEMUKA 7948

AUCKLAND BRANCH

11 WOOKEY LANE

KUMEU 0810

W nzinsulators.co.nz

