



October 2012

We're pleased to say that NZI has re-entered the LV market, and this Pocket Book is representative of the product range we are once again offering to New Zealand wholesalers.

The products branded NZI are particularly important to us, being those items we manufacture in Temuka, South Canterbury. We acknowledge there are any number of imports in this market space, but if we are to retain manufacturing in New Zealand – then NZI brand are the products needing your support.

So, NZI-brand lampholders, connectors, safety bases, standoffs, busbar supports, reels, fuseholders & fuse carriers – all available direct from NZI – and all made by us in Temuka.

On top of that we're offering wholesalers a full range of genuine Cooper Bussmann fuses & Red Spot fuseholders. In earthing we have Fulton & Avon products ex stock.

These days NZI has warehouses in both Temuka and Kumeu (West Auckland). LV products are despatched on an overnight basis, providing your order is in by 3.00pm. The minimum value for LV orders to qualify for freight-free is \$100 + GST (see Freight Rate Card on nzinsulators.co.nz).

Please deal directly through our Temuka-based Customer Services phone 03-6878100, fax 03-6158125 or email sales@nzinsulators.co.nz

Bring on the orders, it's great to be back.

Greg Howell

General Manager

New Zealand Insulators Limited

Mobile 0275-605605

Email greg.howell@nzinsulators.co.nz

Why pay a small premium for NZI Temuka-made product?

1. **Our product lasts** – please assess the cost across our product's entire lifetime.
2. **Trusted porcelain** – NZI's Kakahu blend, from our own mine in South Canterbury, proven & trusted.
3. **Durability** – our porcelain is lighter, stronger and can take the knocks.
4. **Tested** – our products are tested at 7 stages throughout manufacture, we weed out every reject.
5. **QA System** – we manufacture to an ISO9001 certified quality system.
6. **Use it or lose it** – future proof your choices, and retain our local manufacturing capability.
7. **Safe haven** – imports are cheap today, but things tend to go in cycles.
8. **Compliance** – NZI complies with our local standards, as well as environmental, safety, employment & intellectual property regulations.
9. **Actually made here** – because many of your clients will prefer, and attach value to, NZ-made products.
10. **Specify NZ made product** – keep the resources, the infrastructure, the skills, the pride, the money, the people and the precious employment right here. Handing these things offshore to someone else is madness (opinion).

FREE NZI DISPLAY BOX

No charge, just add some to your order:



NZI Wholesaler Display Box

Part Number 804479

20/pack

Complimentary

CONTENTS

NZI BRAND made in Temuka

NZI Connectors	2
NZI Lampholders	3
NZI Reel Bundles	4
NZI Reels & Spike	5
NZI Mini Wedge Fuseholder	5
NZI DMC Standoffs	6
NZI Busbar Supports	7
NZI MCB Safety Bases	8
NZI Fuseholders	10, 12
NZI J-Type Fuse Carriers	26-27

COOPER BUSSMANN made in India/UK

Red Spot & Camaster Fuseholders	9, 11, 12
Bussmann Industrial Fuses	13-15
Bussmann Motor Circuit Fuses	16
Bussmann House Service Fuses	17
Bussmann DIN Fuse Disconnects	19
Bussmann DIN Fuses	20-22
Bussmann Cylindrical Fuses	23
Bussmann High Speed T-Type Fuses	24-25
Bussmann J-Type Fuses	26-27
Bussmann Bottle Fuses	28
Bussmann 12kV Fuse Selection	29

EFEN made in Germany

Efen DIN Fuse Disconnects	18
---------------------------	----

AVON INDUSTRIES made in Whangarei

Avon Shackle Straps & U Shackles	4
Avon HDG & Stainless Earth Rods	30

FULTON INDUSTRIES made in Gosford

Fulton Copper-Clad Earth Rods	31
Fulton Clamps & Connectors	32





1/2/3 WAY PORCELAIN CONNECTORS (AS/NZS 60998)

Part Number	Description	Brand	Origin	Voltage	Rating	Fixing Hole	Glaze	Weight	Box Qty	Unit	Trade NZ\$
15A Connectors											
184012	NZI 1004 1-Way Connector	NZI	NZ	500V	15A	None	Unglazed	9g	28	Each	8.90
184047	NZI 2004 2-Way Connector	NZI	NZ	500V	15A	None	Clear	16g	18	Each	11.10
184063	NZI 2004CFH 2-Way Connector	NZI	NZ	500V	15A	Centre	Clear	21g	12	Each	11.20
184098	NZI 3004 3-Way Connector	NZI	NZ	500V	15A	None	Clear	23g	12	Each	11.60
184128	NZI 3004CFH 3-Way Connector	NZI	NZ	500V	15A	Centre	Clear	30g	9	Each	12.40
30A Connectors											
184144	NZI 1005 1-Way Connector	NZI	NZ	500V	30A	None	Clear	32g	14	Each	9.60
184179	NZI 2005 2-Way Connector	NZI	NZ	500V	30A	None	Clear	33g	8	Each	16.10
184195	NZI 2005CFH 2-Way Connector	NZI	NZ	500V	30A	Centre	Clear	52g	6	Each	16.30
184217	NZI 3005 3-Way Connector	NZI	NZ	500V	30A	None	Clear	57g	6	Each	26.60
184233	NZI 3005CFH 3-Way Connector	NZI	NZ	500V	30A	Centre	Clear	77g	4	Each	27.10
60A Connectors											
184276	NZI 2006CFH 2-Way Connector	NZI	NZ	500V	60A	Centre	Clear	105g	1	Each	31.50
184284	NZI 3006CFH 3-Way Connector	NZI	NZ	500V	60A	Centre	Clear	150g	1	Each	40.10





'R' RESTRICTED-MOUNTING LAMP HOLDERS (ES/GES to AS/NZS 60998, BC to AS 3117)

Part Number	Description	Brand	Origin	Voltage	Rating	Mounting	Shrouding	Glaze	Weight	Box Qty	Unit	Trade NZ\$
Bayonet Cap Lampholders												
164046	NZI BC 960 Lampholder	NZI	NZ	240V	5A	External Side	Unshrouded	Clear	70g	8	Each	24.70
164054	NZI BC 961 Lampholder	NZI	NZ	240V	5A	External Back (2-Pin Batten)	Unshrouded	Clear	60g	8	Each	26.70
Edison Screw Lampholders												
164194	NZI ES 971 Lampholder	NZI	NZ	240V	5A	External Back	Unshrouded	Clear	85g	8	Each	23.30
164216	NZI ES 975 Lampholder	NZI	NZ	240V	5A	Internal Back	Unshrouded	Clear	70g	8	Each	24.80
166316	NZI ES 970 Lampholder	NZI	NZ	240V	5A	External Side	Unshrouded	Clear	105g	8	Each	25.30
164275	NZI ES T10 Lampholder	NZI	NZ	240V	5A	Ext. Back (HD)	Unshrouded	Clear	75g	8	Each	25.10
Giant Edison Screw Lampholders												
164011	NZI GES 926 Lampholder	NZI	NZ	650V	15A	Internal Back	Shrouded	White	260g	6	Each	27.80
164038	NZI GES 926-1 Lampholder	NZI	NZ	650V	15A	Internal Back	Unshrouded	White	245g	6	Each	26.90
164380	NZI GES 926-3 Lampholder	NZI	NZ	650V	15A	Internal Back	Unshrouded	White	225g	6	Each	27.80

AVON SHACKLES & NZI Reel BUNDLES



SHACKLE STRAPS & U SHACKLES

Part Number	Description	Brand	Origin	Length	Width	Thick	Holes	HDG	Weight	Box Qty	Unit	Trade NZ\$
Shackle Straps												
537004	Avon AA20001 Shackle Strap 7"	Avon	NZ	180mm	32mm	3mm	14mm	To AS/NZS 4680:2006	140g	100	Each	2.60
537012	Avon AA20009 Shackle Strap #11	Avon	NZ	170mm	30mm	2mm	14mm	To AS/NZS 4680:2006	85g	200	Each	2.30
537020	Avon AA20011 Shackle Strap #8 Offset	Avon	NZ	180mm	32mm	3mm	18mm	To AS/NZS 4680:2006	130g	100	Each	7.10
U Shackles												
537039	Avon AA23001 210 U Shackle Small	Avon	NZ	85mm	32mm	3mm	14mm	To AS/NZS 4680:2006	160g	100	Each	4.50
537047	Avon AA23002 205 U Shackle Large	Avon	NZ	105mm	32mm	3mm	14mm	To AS/NZS 4680:2006	210g	50	Each	7.60
537063	Avon AA23003 320 U Shackle Extra Large	Avon	NZ	132mm	40mm	5mm	14mm	To AS/NZS 4680:2006	500g	30	Each	13.40

PREASSEMBLED REEL BUNDLES

Part Number	Description	Origin	Assembled	Weight	Box Qty	Unit	Trade NZ\$
Reel & Shackle Strap Bundles							
102148	NZI 210 Reel + Avon 7" Shackle Strap + 2 x M12 110 Bolt	NZ	Preassembled	750g	20	Bundle	15.40
102180	NZI 205 Reel + Avon 7" Shackle Strap + 2 x M12 110 Bolt	NZ	Preassembled	1.1kg	10	Bundle	21.80
Reel & U-Shackle Bundles							
102121	NZI 210 Reel + Avon Small U Shackle + M12 110 Bolt	NZ	Preassembled	550g	20	Bundle	12.40
102156	NZI 205 Reel + Avon E/Large U Shackle + M12 110 Bolt	NZ	Preassembled	1.2kg	10	Bundle	25.30

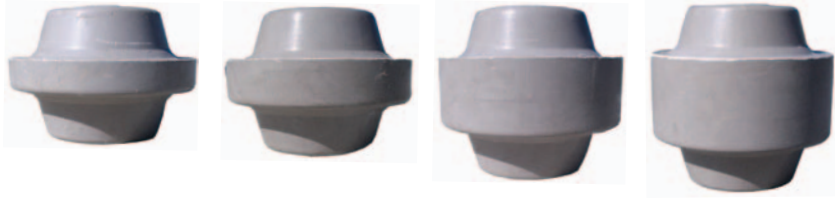




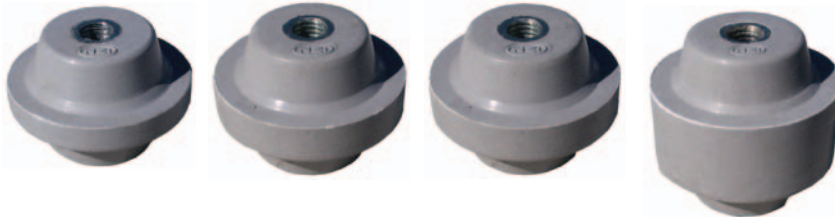
PORCELAIN LV REELS, SPIKE & FENCE STRAIN

Part Number	Description	Brand	Origin	Rating	Groove	Load	Detail	Glaze	Weight	Box Qty	Unit	Trade NZ\$
Reels/Bobbins												
109029	NZI 120 Reel	NZI	NZ	650V	13mm	4.5kN	14mm Diameter	Clear	130g	30	Each	1.90
109207	NZI 210 Reel	NZI	NZ	650V	10mm	6kN	17.5mm Diameter	Grey	220g	80	Each	3.50
109061	NZI 220 Reel	NZI	NZ	650V	19mm	5.5kN	17mm Diameter	Grey	295g	80	Each	3.50
109088	NZI 224 Trurip Reel	NZI	NZ	650V	25.5mm	13.5kN	17.5mm Diameter	Grey	385g	34	Each	6.00
109010	NZI 205 Reel	NZI	NZ	3.3kV	18mm	10kN	17.5mm Diameter	Grey	540g	42	Each	6.80
Spike												
100501	NZI 103 Spike	NZI	NZ		16mm Hole	4kN	Coach Screw	Grey	325g	50	Each	13.90
Fence Strain												
108014	NZI 107 Fence Strain	NZI	NZ	4kV			57mm Height	Clear	135g	280	Each	2.90
Mini Wedge Fuseholder (AS/NZS 3947)												
468789	NZI Mini Wedge Carrier/Base Complete	NZI	NZ	200A	Offset Tag Fuses		Porcelain & ETPNFM	Grey	3.0kg	5	Each	177.90

NZI DMC STANDOFFS



M8 DMC Standoffs



M10 DMC Standoffs

DMC STANDOFFS WITH STEEL INSERTS

Part Number	Description	Brand	Origin	Rating	Inserts	Height	Colour	Construction	Weight	Box Qty	Unit	Trade NZ\$
M8 DMC Standoffs (IEC 60660)												
515191	NZI 6/35/M8 DMC Standoff	NZI	NZ	1.5kV	M8	35mm	Grey	DMC & Zinc-Plated Steel	95g	12	Each	15.20
515221	NZI 6/38/M8 DMC Standoff	NZI	NZ	1.5kV	M8	38mm	Grey	DMC & Zinc-Plated Steel	110g	12	Each	18.40
515264	NZI 6/45/M8 DMC Standoff	NZI	NZ	1.5kV	M8	45mm	Grey	DMC & Zinc-Plated Steel	135g	12	Each	20.90
514705	NZI 6/50/M8 DMC Standoff	NZI	NZ	1.5kV	M8	50mm	Grey	DMC & Zinc-Plated Steel	155g	12	Each	22.90
M10 DMC Standoffs (IEC 60660)												
515299	NZI 6/35/M10 DMC Standoff	NZI	NZ	1.5kV	M10	35mm	Grey	DMC & Zinc-Plated Steel	90g	12	Each	15.20
515329	NZI 6/38/M10 DMC Standoff	NZI	NZ	1.5kV	M10	38mm	Grey	DMC & Zinc-Plated Steel	105g	12	Each	18.40
515353	NZI 6/45/M10 DMC Standoff	NZI	NZ	1.5kV	M10	45mm	Grey	DMC & Zinc-Plated Steel	130g	12	Each	20.90
514772	NZI 6/50/M10 DMC Standoff	NZI	NZ	1.5kV	M10	50mm	Grey	DMC & Zinc-Plated Steel	150g	12	Each	22.90



M6 Busbar Support



M8 Busbar Support



M10 Busbar Support



M12 Busbar Support

PORCELAIN BUSBAR SUPPORTS – COMPLETE WITH BOLT (IEC 60273)

Part Number	Description	Brand	Origin	Rating	Bolt	Material	Glaze	Weight	Box Qty	Unit	Trade NZ\$
3kV Busbar Supports											
186104	NZI M6 Busbar Support	NZI	NZ	3kV	M6 (1/4")	Porcelain & Z/plated Steel	White	171g	6	Each	14.40
185043	NZI M8 Busbar Support	NZI	NZ	3kV	M8 (5/16")	Porcelain & Z/plated Steel	White	185g	6	Each	16.90
186112	NZI M10 Busbar Support	NZI	NZ	3kV	M10 (3/8")	Porcelain & Z/plated Steel	White	215g	6	Each	20.40
186120	NZI M12 Busbar Support	NZI	NZ	3kV	M12 (1/2")	Porcelain & Z/plated Steel	White	330g	6	Each	26.70



New Charcoal NZI Flame-Retardant MCB Safety Bases



Polyester Butylene Terephthalate



Made in New Zealand

UNIVERSAL MCB SAFETY BASES (AS/NZS 3121)

Part Number	Description	Brand	Origin	Voltage	Rating	Material	Colour	Weight	Box Qty	Unit	Trade NZ\$
Back Entry Safety Base											
631779	NZI Back Entry Plastic Safety Base	NZI	NZ	240V	6-40A	Glass-Reinforced Polyester Resin	Charcoal	26g	36	Each	5.90
End Entry Safety Base											
631809	NZI End Entry Plastic Safety Base	NZI	NZ	240V	6-40A	Glass-Reinforced Polyester Resin	Charcoal	24g	36	Each	6.20



32A Safeloc & Safeclip FUSEHOLDERS



Economy G06



Safeclip SC32H



Safeloc 32NNSF



Safeloc 32NNSBS

32A FUSEHOLDERS FOR STAGGERED TAG FUSELINKS

Part Number	Description	Brand	Origin	Rating	Voltage	Configuration	Colour	Weight	Box Qty	Unit	Trade NZ\$
Economy G06 Fuseholders (AS/NZS 60269)											
540161	32A G06 EE/EE Fuseholder	Unbranded	China	32A	550V	End Entry End Entry	Black	85g	5	Each	12.60
540757	32A G06 BE/BE Fuseholder	Unbranded	China	32A	550V	Back Entry Back Entry	Black	85g	5	Each	12.60
Safeloc NSD Fuseholders (IEC 60269)											
545007	Bussmann 32NNSF Front Wired	Bussmann	India	32A	415V	Front Wired Front Wired	Black		10	Each	14.40
545015	Bussmann 32NNSR Back Wired	Bussmann	India	32A	415V	Back Wired Back Wired	Black		10	Each	14.40
540803	Bussmann 32NNSBS Back Stud	Bussmann	India	32A	415V	Back Stud Back Stud	Black		10	Each	19.70
545023	Bussmann 32NNSFBS Front Wired Back Stud	Bussmann	India	32A	415V	Front Wired Back Stud	Black		10	Each	29.70
Safeclip NSD Fuseholder (IEC 60629)											
545031	Bussmann GE SC32H Front Wired	Bussmann	UK	32A		Front Wired Front Wired	Black		10	Each	15.20

NZI 63A K07 FUSEHOLDERS



BS/BE

EB/EE



NZI 63A K07 Fuseholders, made in Temuka



Side View



BE/BE

63A HG PHENOLIC FUSEHOLDERS FOR OFFSET TAG FUSELINKS

Part Number	Description	Brand	Origin	Amps	Rating	Configuration	Colour	Weight	Box Qty	Unit	Trade NZ\$
63A K07 Fuseholders (AS/NZS 60269)											
676004	NZI K07 63A EE/EE	NZI	NZ	63A	500V	End Entry End Entry	Black	260g	6	Each	35.40
676012	NZI K07 63A BE/BE	NZI	NZ	63A	500V	Back Entry Back Entry	Black	270g	6	Each	39.20
676020	NZI K07 63A BE/EE	NZI	NZ	63A	500V	Back Entry End Entry	Black	265g	6	Each	42.30
678023	NZI K07 63A BS/BE	NZI	NZ	63A	500V	Back Stud Back Entry	Black	320g	6	Each	45.10
678031	NZI K07 63A BS/EE	NZI	NZ	63A	500V	Back Stud End Entry	Black	320g	6	Each	45.10
678058	NZI K07 63A BB/EE	NZI	NZ	63A	500V	Back Busbar End Entry	Black	290g	6	Each	45.10
678066	NZI K07 63A EB/EE	NZI	NZ	63A	500V	End Busbar End Entry	Black	280g	6	Each	45.10
678074	NZI K07 63A EB/BE	NZI	NZ	63A	500V	End Busbar Back Entry	Black	280g	6	Each	45.10
678007	NZI K07 63A BS/BS	NZI	NZ	63A	500V	Two Back Studs	Black	380g	6	Each	53.40





Red Spot Fuseholders now through NZI



Camaster CM63F

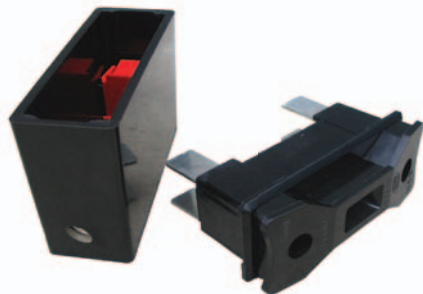


Red Spot RS63H

63A FUSEHOLDERS FOR OFFSET TAG FUSELINKS

Part Number	Description	Brand	Origin	Rating	Voltage	Configuration	Colour	Weight	Box Qty	Unit	Trade NZ\$
Red Spot 63A Fuseholders (IEC 60269)											
692824	Red Spot RS63H Front Wired	Bussmann	UK	63A	690V	Front Wired Front Wired	Black	310g	10	Each	39.30
692832	Red Spot RS63P Back Stud	Bussmann	UK	63A	690V	Back Stud Back Stud	Black		10	Each	50.90
692840	Red Spot RS63PH Front Wired BS	Bussmann	UK	63A	690V	Front Wired Back Stud	Black		10	Each	50.90
692859	Red Spot RS63HWH Front Wired White	Bussmann	UK	63A	690V	Front Wired Front Wired	White	310g	10	Each	43.40
692867	Red Spot RS63PWH Back Stud White	Bussmann	UK	63A	690V	Back Stud Back Stud	White		10	Each	64.60
Camaster 63A Cam Action Fuseholders (IEC 60269)											
692034	Camaster CM63F Front Wired	Bussmann	India	63A	690V	Front Wired Front Wired	Black	200g	5	Each	49.50
692816	Camaster CM63FW Front Wired White	Bussmann	India	63A	690V	Front Wired Front Wired	White	200g	5	Each	49.50
692123	63/100BS Back Stud for Camaster 63A/100A	Bussmann	India	63/100A	690V	Back Stud Accessory			5	Each	29.00

VARIOUS 100+A FUSEHOLDERS



NZI 100A



Red Spot RS100H



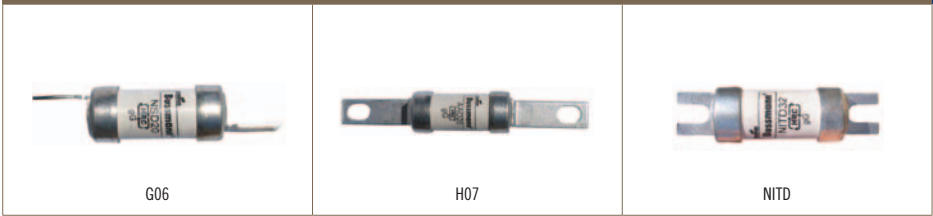
NZI 100A



Red Spot RS200H

100+A FUSEHOLDERS FOR OFFSET & CENTRAL TAG FUSELINKS

Part Number	Description	Brand	Origin	Rating	Voltage	Configuration	Colour	Weight	Box Qty	Unit	Trade NZ\$
NZI 100A L14 Fuseholder (BS88 Part2 1975)											
678678	NZI L14 100A EE/EE Fuseholder	NZI	NZ	100A	500V	End Entry End Entry	Black	870g	5	Each	138.00
Red Spot 100/200/400A Fuseholders (IEC 60269)											
692905	Red Spot RS100H Front Wired 100A	Bussmann	UK	100A	690V	Front Wired Front Wired	Black	850g	5	Each	105.30
692913	Red Spot RS100P Back Stud 100A	Bussmann	UK	100A	690V	Back Stud Back Stud	Black		5	Each	156.10
692921	Red Spot RS100PH Front Wired BS 100A	Bussmann	UK	100A	690V	Front Wired Back Stud	Black		5	Each	158.30
692948	Red Spot RS200H Front Wired 200A	Bussmann	UK	200A	690V	Front Wired Front Wired	Black	2.1kg	1	Each	389.00
692956	Red Spot RS400H Front Wired 400A	Bussmann	UK	400A	690V	Front Wired Front Wired	Black		1	Each	1,615.00
Camaster 100A Cam Action Fuseholder (IEC 60269)											
692042	Camaster CM100F Front Wired	Bussmann	India	100A	690V	Front Wired Front Wired	Black		5	Each	118.30
692123	63/100BS Back Stud for Camaster 63A/100A	Bussmann	India	63/100A	690V	Back Stud Accessory			5	Each	29.00



G06, H07 & NITD FUSELINKS (CLASS gG)

Part Number	Description	Brand	Origin	Amps	Volts	Break	Tags	Box Qty	Unit	Trade NZ\$
G06 Staggered HRC Fuselinks										
644609	2G06 (NSD2)	Bussmann	India	2A	550V	80kA	Staggered	20	Each	2.60
644617	4G06 (NSD4)	Bussmann	India	4A	550V	80kA	Staggered	20	Each	2.60
644625	6G06 (NSD6)	Bussmann	India	6A	550V	80kA	Staggered	20	Each	2.60
644633	10G06 (NSD10)	Bussmann	India	10A	550V	80kA	Staggered	20	Each	2.60
644641	16G06 (NSD16)	Bussmann	India	16A	550V	80kA	Staggered	20	Each	3.10
644668	20G06 (NSD20)	Bussmann	India	20A	550V	80kA	Staggered	20	Each	3.10
646881	25G06 (NSD25)	Bussmann	India	25A	550V	80kA	Staggered	20	Each	3.30
646903	32G06 (NSD32)	Bussmann	India	32A	550V	80kA	Staggered	20	Each	3.30
H07 Offset HRC Fuselinks										
645303	2H07 (AA02)	Bussmann	India	2A	550V	80kA	Offset Bolted	20	Each	3.60
645311	4H07 (AA04)	Bussmann	India	4A	550V	80kA	Offset Bolted	20	Each	3.60
645338	6H07 (AA06)	Bussmann	India	6A	550V	80kA	Offset Bolted	20	Each	3.60
645346	10H07 (AA010)	Bussmann	India	10A	550V	80kA	Offset Bolted	20	Each	3.60
645354	16H07 (AA016)	Bussmann	India	16A	550V	80kA	Offset Bolted	20	Each	4.90
645362	20H07 (AA020)	Bussmann	India	20A	550V	80kA	Offset Bolted	20	Each	4.90
645370	25H07 (AA025)	Bussmann	India	25A	550V	80kA	Offset Bolted	20	Each	5.10
645389	32H07 (AA032)	Bussmann	India	32A	550V	80kA	Offset Bolted	20	Each	5.10
NITD Offset HRC Fuselinks										
641332	NITD2	Bussmann	India	2A	550V	80kA	Offset Slotted	20	Each	2.60
641340	NITD4	Bussmann	India	4A	550V	80kA	Offset Slotted	20	Each	2.60
641359	NITD6	Bussmann	India	6A	550V	80kA	Offset Slotted	20	Each	2.60
641367	NITD10	Bussmann	India	10A	550V	80kA	Offset Slotted	20	Each	2.60
641375	NITD16	Bussmann	India	16A	550V	80kA	Offset Slotted	20	Each	3.10
641383	NITD20	Bussmann	India	20A	550V	80kA	Offset Slotted	20	Each	3.10
641391	NITD25	Bussmann	India	25A	550V	80kA	Offset Slotted	20	Each	3.30
641405	NITD32	Bussmann	India	32A	550V	80kA	Offset Slotted	20	Each	3.30

COOPER BUSSMANN HRC BS88 FUSELINKS



K07



L14



M14



L09

K07, L14, M14 & L09 FUSELINKS (CLASS gG)

Part Number	Description	Brand	Origin	Amps	Volts	Break	Tags	Unit	Box Qty	Unit	Trade NZ\$
K07 Offset HRC Fuselinks											
645664	40K07 (BA040)	Bussmann	India	40A	550V	80kA	Offset	Each	20	Each	6.50
645680	50K07 (BA050)	Bussmann	India	50A	550V	80kA	Offset	Each	20	Each	6.50
645702	63K07 (BA063)	Bussmann	India	63A	550V	80kA	Offset	Each	20	Each	6.50
692336	80K07R (OSD80)	Bussmann	India	80A	550V	80kA	Offset	Each	20	Each	9.40
692344	100K07R (OSD100)	Bussmann	India	100A	550V	80kA	Offset	Each	20	Each	9.40
L09 Offset HRC Fuselinks											
646458	80L09 (CD80)	Bussmann	India	80A	550V	80kA	Offset	Each	10	Each	15.70
646466	100L09 (CD100)	Bussmann	India	100A	550V	80kA	Offset	Each	10	Each	15.70
L14 Offset HRC Fuselinks											
646512	32L14 (CE032)	Bussmann	India	32A	550V	80kA	Offset	Each	10	Each	13.20
646520	40L14 (CE040)	Bussmann	India	40A	550V	80kA	Offset	Each	10	Each	13.20
646539	50L14 (CE050)	Bussmann	India	50A	550V	80kA	Offset	Each	10	Each	13.20
646547	63L14 (CE063)	Bussmann	India	63A	550V	80kA	Offset	Each	10	Each	13.20
646555	80L14 (CE080)	Bussmann	India	80A	550V	80kA	Offset	Each	10	Each	13.20
646563	100L14 (CE0100)	Bussmann	India	100A	550V	80kA	Offset	Each	10	Each	13.20
M14 Offset HRC Fuselinks											
646636	125M14 (DE0125)	Bussmann	India	125A	415V	80kA	Offset	Each	5	Each	18.80
646652	160M14 (DE0160)	Bussmann	India	160A	415V	80kA	Offset	Each	5	Each	18.80
646660	200M14 (DE0200)	Bussmann	India	200A	415V	80kA	Offset	Each	5	Each	18.80



M09, N09, P09, N11, P11 & R11 FUSELINKS (CLASS gG)

Part Number	Description	Brand	Origin	Amps	Volts	Break	Tags	Box Qty	Unit	Trade NZ\$
M09 Central HRC Fuselinks										
646571	125M09 (DD125)	Bussmann	India	125A	415V	80kA	Central	5	Each	26.00
646601	160M09 (DD160)	Bussmann	India	160A	415V	80kA	Central	5	Each	27.30
646628	200M09 (DD200)	Bussmann	India	200A	415V	80kA	Central	5	Each	27.60
N09 Central HRC Fuselinks										
646709	250N09 (ED250)	Bussmann	India	250A	415V	80kA	Central	1	Each	42.30
646717	315N09 (ED315)	Bussmann	India	315A	415V	80kA	Central	1	Each	42.30
P09 Central HRC Fuselinks										
646679	355P09 (ED355)	Bussmann	India	355A	415V	80kA	Central	1	Each	43.10
646687	400P09 (ED400)	Bussmann	India	400A	415V	80kA	Central	1	Each	43.10
N11 Central HRC Fuselinks										
646768	250N11 (EFS250)	Bussmann	India	250A	415V	80kA	Central	1	Each	32.40
646776	315N11 (EFS315)	Bussmann	India	315A	415V	80kA	4-Hole Central	1	Each	55.80
P11 Central HRC Fuselinks										
647942	355P11 (EF355)	Bussmann	India	355A	415V	80kA	4-Hole Central	1	Each	55.80
646644	400P11 (EF400)	Bussmann	India	400A	415V	80kA	4-Hole Central	1	Each	56.40
R11 Central HRC Fuselinks										
646946	450R11 (FF450)	Bussmann	India	450A	550V	80kA	4-Hole Central	1	Each	150.60
646954	500R11 (FF500)	Bussmann	India	500A	550V	80kA	4-Hole Central	1	Each	153.50
646962	560R11 (FF560)	Bussmann	India	560A	550V	80kA	4-Hole Central	1	Each	156.40
646970	630R11 (FF630)	Bussmann	India	630A	550V	80kA	4-Hole Central	1	Each	162.20

COOPER BUSSMANN HRC BS88 FUSELINKS



G06 Motor Circuit



H07 Motor Circuit



K07 Motor Circuit



P11 Motor Circuit

MOTOR CIRCUIT FUSELINKS (CLASS gG)

Part Number	Description	Brand	Origin	Amps	Volts	Break	Tags	Box Qty	Unit	Trade NZ\$
G06 HRC Motor Circuit Fuses										
649201	20M25 G06 MC (NSD20M25)	Bussmann	India	20M25	415V	80kA	Staggered	20	Each	5.30
649228	20M32 G06 MC (NSD20M32)	Bussmann	India	20M32	415V	80kA	Staggered	20	Each	5.30
649236	32M40 G06 MC (NSD32M40)	Bussmann	India	32M40	415V	80kA	Staggered	20	Each	6.70
H07 HRC Motor Circuit Fuses										
649368	32M40 H07 MC (AAO32M40)	Bussmann	India	32M40	550V	80kA	Offset	20	Each	7.00
649384	32M50 H07 MC (AAO32M50)	Bussmann	India	32M50	550V	80kA	Offset	20	Each	7.00
649392	32M63 H07 MC (AAO32M63)	Bussmann	India	32M63	550V	80kA	Offset	20	Each	7.00
K07 HRC Motor Circuit Fuses										
649457	63M80 K07 MC (BAO63M80)	Bussmann	India	63M80	550V	80kA	Offset	20	Each	8.50
649465	63M100 K07 MC (BAO63M100)	Bussmann	India	63M100	550V	80kA	Offset	20	Each	8.50
Other HRC Motor Circuit Fuses										
649651	100M125 L09 MC (CD100M125)	Bussmann	India	100M125	415V	80kA	Central	10	Each	55.00
649597	100M125 L14 MC (CEO100M125)	Bussmann	India	100M125	415V	80kA	Offset	10	Each	39.80
649678	100M160 L09 MC (CD100M160)	Bussmann	India	100M160	415V	80kA	Central	10	Each	55.00
649619	100M160 L14 MC (CEO100M160)	Bussmann	India	100M160	415V	80kA	Offset	10	Each	39.80
649627	100M200 L14 MC (CEO100M200)	Bussmann	India	100M200	415V	80kA	Offset	10	Each	39.80
649694	200M250 M09 MC (DD200M250)	Bussmann	India	200M250	415V	80kA	Central	5	Each	57.20
649643	200M250 M14 MC (DEO200M250)	Bussmann	India	200M250	415V	80kA	Offset	5	Each	41.20
649724	315M400 N09 MC (EP315M400)	Bussmann	India	315M400	550V	80kA	Central	1	Each	77.60
646695	400M500 P09 MC (ED400M500)	Bussmann	India	400M500	415V	80kA	Central	1	Each	195.30
647950	400M500 P11 MC (EF400M500)	Bussmann	India	400M500	550V	80kA	Central	1	Each	311.60



Ferrule



KR85 House Service

KR85 HOUSE SERVICE FUSELINKS (CLASS gG)

Part Number	Description	Brand	Origin	Amps	Volts	Break	Configuration	Standard	Box Qty	Unit	Trade NZ\$
KR85 HRC House Service Fuses											
647802	5A (5KR85)	Bussmann	India	5A	415V	33kA	22x57mm Ferrule	BS1361	20	Each	3.90
647810	10A (10KR85)	Bussmann	India	10A	415V	33kA	22x57mm Ferrule	BS1361	20	Each	3.90
647829	15A (15KR85)	Bussmann	India	15A	415V	33kA	22x57mm Ferrule	BS1361	20	Each	3.90
647837	20A (20KR85)	Bussmann	India	20A	415V	33kA	22x57mm Ferrule	BS1361	20	Each	3.90
647853	30A (30KR85)	Bussmann	India	30A	415V	33kA	22x57mm Ferrule	BS1361	20	Each	3.90
647861	40A (40KR85)	Bussmann	India	40A	415V	33kA	22x57mm Ferrule	BS1361	20	Each	3.90
647888	45A (45KR85)	Bussmann	India	45A	415V	33kA	22x57mm Ferrule	BS1361	20	Each	3.90
647896	50A (50KR85)	Bussmann	India	50A	415V	33kA	22x57mm Ferrule	BS1361	20	Each	3.90
647918	60A (60KR85)	Bussmann	India	60A	415V	33kA	22x57mm Ferrule	BS1361	20	Each	3.90
647926	80A (80KR85)	Bussmann	India	80A	415V	33kA	22x57mm Ferrule	BS1361	20	Each	4.60
647934	100A (100KR85)	Bussmann	India	100A	415V	33kA	22x57mm Ferrule	BS1361	20	Each	5.20

EFEN DIN SWITCHES



NH00 Base



NH1 Base



NH2 Base



NH1 3P3P



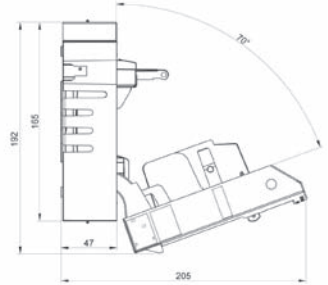
NH2 1PSP

EFEN DIN FUSE DISCONNECTS

Part Number	Description	Brand	Origin	Efen Code	Amps	Poles	Phase	Standard	Weight	Box Qty	Unit	Trade NZ\$
1 Pole Base Only												
531049	Efen NH00 160A Base Only	Efen	Germany	33000-0050	160A	1		IEC 947-3	80g	3	Each	19.70
530735	Efen NH1 250A Base Only	Efen	Germany	33027-0010	250A	1		IEC 947-3	240g	3	Each	56.40
531006	Efen NH2 400A Base Only	Efen	Germany	33032-0010	400A	1		IEC 947-3	400g	3	Each	79.20
1 Pole (Single Phase)												
531022	Efen NH00 160A Switch	Efen	Germany	33107-0010	160A	1	Single	IEC 947-3	360g	1	Each	149.20
531030	Efen NH1 250A Switch	Efen	Germany	33095-0010	250A	1	Single	IEC 947-3	2.1kg	1	Each	373.90
530964	Efen NH2 400A Switch	Efen	Germany	33096-0010	400A	1	Single	IEC 947-3	2.1kg	1	Each	373.90
530972	Efen NH3 630A Switch	Efen	Germany	33097-0010	630A	1	Single	IEC 947-3	2.3kg	1	Each	391.50
Horizontal 3 Pole (Three Phase)												
530859	Efen NH00 100A Switch	Efen	Germany	34050-0000	100A	3	Three	IEC 947-3	500g	1	Each	168.50
530409	Efen NH00 160A Switch	Efen	Germany	34060-0000	160A	3	Three	IEC 947-3	600g	1	Each	173.70
531928	Efen NH1 250A Switch	Efen	Germany	34162-0000	250A	3	Three	IEC 947-3	2.1kg	1	Each	527.20
530743	Efen NH2 400A Switch	Efen	Germany	34262-0000	400A	3	Three	IEC 947-3	3.0kg	1	Each	710.30
530727	Efen NH3 630A Switch	Efen	Germany	34362-0000	630A	3	Three	IEC 947-3	4.0kg	1	Each	911.60



NH00 3P3P



NH00 3P3P Dimensions

BUSSMANN DIN FUSE DISCONNECTS

Part Number	Description	Brand	Origin	CB Code	Amps	Poles	Phase	Standard	Box Qty	Unit	Trade NZ\$
1 Pole Base Only											
697001	Bussmann NH00 160A Base Only	Bussmann	Czech	SD00-D	160A	1	Single	IEC 60269	3	Each	14.00
697028	Bussmann NH1 250A Base Only	Bussmann	Czech	SD1-D	250A	1	Single	IEC 60269	3	Each	36.50
697036	Bussmann NH2 400A Base Only	Bussmann	Czech	SD2-D	400A	1	Single	IEC 60269	3	Each	41.00
1 Pole (Single Phase)											
697044	Bussmann NH00 160A Switch	Bussmann	Czech	BFH00-1A/F	160A	1	Single	IEC 60947-1	1	Each	128.30
697052	Bussmann NH1 250A Switch	Bussmann	Czech	BFH1-1A/F	250A	1	Single	IEC 60947-1	1	Each	301.10
697060	Bussmann NH2 400A Switch	Bussmann	Czech	BFH2-1A/F	400A	1	Single	IEC 60947-1	1	Each	301.10
Horizontal 3 Pole (Three Phase)											
697079	Bussmann NH00 160A Switch	Bussmann	Czech	BFH00-3A/F	160A	3	Three	IEC 60947-1	1	Each	129.30
697087	Bussmann NH1 250A Switch	Bussmann	Czech	BFH1-3A/F	250A	3	Three	IEC 60947-1	1	Each	302.90
697095	Bussmann NH2 400A Switch	Bussmann	Czech	BFH2-3A/F	400A	3	Three	IEC 60947-1	1	Each	426.30
697109	Bussmann NH3 630A Switch	Bussmann	Czech	BFH3-3A/F	630A	3	Three	IEC 60947-1	1	Each	564.50

COOPER BUSSMANN HRC DIN Blade FUSELINKS



Solid Link



NH000



NH00

SOLID LINK, NH000 & NH00 DIN FUSES (CLASS gG)

Part Number	Description	Brand	Origin	Amps	Volts	Break	Configuration	Box Qty	Unit	Trade NZ\$
Solid Link Blades										
688983	160A Solid Link 00 (SL00)	Bussmann	India	160A	500V	120kA	Solid Link	3	Each	17.30
657115	250A Solid Link 1 (SL1)	Bussmann	India	250A	500V	120kA	Solid Link	3	Each	21.70
689300	400A Solid Link 2 (SL2)	Bussmann	India	400A	500V	120kA	Solid Link	3	Each	26.30
657131	630A Solid Link 3 (SL3)	Bussmann	India	630A	500V	120kA	Solid Link	3	Each	50.60
NH000 DIN HRC Fuselinks										
688584	10A NH000 (10NHG000B)	Bussmann	India	10A	500V	120kA	DIN Blade	3	Each	7.60
690317	16A NH000 (16NHG000B)	Bussmann	India	16A	500V	120kA	DIN Blade	3	Each	7.60
689130	20A NH000 (20NHG000B)	Bussmann	India	20A	500V	120kA	DIN Blade	3	Each	7.60
689149	32A NH000 (32NHG000B)	Bussmann	India	32A	500V	120kA	DIN Blade	3	Each	7.60
689238	40A NH000 (40NHG000B)	Bussmann	India	40A	500V	120kA	DIN Blade	3	Each	7.60
689165	50A NH000 (50NHG000B)	Bussmann	India	50A	500V	120kA	DIN Blade	3	Each	7.60
689173	63A NH000 (63NHG000B)	Bussmann	India	63A	500V	120kA	DIN Blade	3	Each	7.60
689181	80A NH000 (80NHG000B)	Bussmann	India	80A	500V	120kA	DIN Blade	3	Each	7.60
689203	100A NH000 (100NHG000B)	Bussmann	India	100A	500V	120kA	DIN Blade	3	Each	7.60
NH00 DIN HRC Fuselinks										
689211	125A NH00 (125NHG000B)	Bussmann	India	125A	500V	120kA	DIN Blade	3	Each	11.10
689491	160A NH00 (160NHG000B)	Bussmann	India	160A	500V	120kA	DIN Blade	3	Each	11.10





NHO



NH1

NHO & NH1 DIN FUSES (CLASS gG)

Part Number	Description	Brand	Origin	Amps	Volts	Break	Configuration	Box Qty	Unit	Trade NZ\$
NHO DIN HRC Fuselinks										
665290	10A NHO (16NHG0B)	Bussmann	India	10A	500V	120kA	Blade Type	3	Each	13.20
689378	16A NHO (16NHG0B)	Bussmann	India	16A	500V	120kA	Blade Type	3	Each	13.20
689831	20A NHO (20NHG0B)	Bussmann	India	20A	500V	120kA	Blade Type	3	Each	13.20
688576	25A NHO (25NHG0B)	Bussmann	India	25A	500V	120kA	Blade Type	3	Each	13.20
693162	32A NHO (32NHG0B)	Bussmann	India	32A	500V	120kA	Blade Type	3	Each	13.20
689963	40A NHO (40NHG0B)	Bussmann	India	40A	500V	120kA	Blade Type	3	Each	13.20
689858	50A NHO (50NHG0B)	Bussmann	India	50A	500V	120kA	Blade Type	3	Each	13.20
689319	63A NHO (63NHG0B)	Bussmann	India	63A	500V	120kA	Blade Type	3	Each	13.20
689335	100A NHO (100NHG0B)	Bussmann	India	100A	500V	120kA	Blade Type	3	Each	13.20
689343	125A NHO (125NHG0B)	Bussmann	India	125A	500V	120kA	Blade Type	3	Each	13.20
689351	160A NHO (160NHG0B)	Bussmann	India	160A	500V	120kA	Blade Type	3	Each	13.20
NH1 DIN HRC Fuselinks										
689866	16A NH1 (16NHG01B)	Bussmann	India	16A	500V	120kA	Blade Type	3	Each	13.70
689688	20A NH1 (20NHG01B)	Bussmann	India	20A	500V	120kA	Blade Type	3	Each	13.70
689432	25A NH1 (25NHG01B)	Bussmann	India	25A	500V	120kA	Blade Type	3	Each	13.70
692530	32A NH1 (32NHG01B)	Bussmann	India	32A	500V	120kA	Blade Type	3	Each	13.70
686700	40A NH1 (40NHG01B)	Bussmann	India	40A	500V	120kA	Blade Type	3	Each	13.70
689416	50A NH1 (50NHG01B)	Bussmann	India	50A	500V	120kA	Blade Type	3	Each	13.70
689424	63A NH1 (63NHG01B)	Bussmann	India	63A	500V	120kA	Blade Type	3	Each	13.70
689084	80A NH1 (80NHG01B)	Bussmann	India	80A	500V	120kA	Blade Type	3	Each	13.70
689440	100A NH1 (100NHG01B)	Bussmann	India	100A	500V	120kA	Blade Type	3	Each	13.70
689459	125A NH1 (125NHG01B)	Bussmann	India	125A	500V	120kA	Blade Type	3	Each	13.70
689467	160A NH1 (160NHG01B)	Bussmann	India	160A	500V	120kA	Blade Type	3	Each	16.20
689475	200A NH1 (200NHG1B)	Bussmann	India	200A	500V	120kA	Blade Type	3	Each	16.20
661066	224A NH1 (224NHG1B)	Bussmann	India	224A	500V	120kA	Blade Type	3	Each	16.20
689939	250A NH1 (250NHG1B)	Bussmann	India	250A	500V	120kA	Blade Type	3	Each	16.20



NH2



NH3

NH2 & NH3 DIN FUSES (CLASS gG)

Part Number	Description	Brand	Origin	Amps	Volts	Break	Configuration	Box Qty	Unit	Trade NZ\$
NH2 DIN HRC Fuselinks										
686735	50A NH2 (50NHG02B)	Bussmann	India	50A	500V	120kA	Blade Type	3	Each	17.60
689548	63A NH2 (63NHG02B)	Bussmann	India	63A	500V	120kA	Blade Type	3	Each	17.60
689998	80A NH2 (80NHG02B)	Bussmann	India	80A	500V	120kA	Blade Type	3	Each	17.60
689882	100A NH2 (100NHG02B)	Bussmann	India	100A	500V	120kA	Blade Type	3	Each	17.60
689564	125A NH2 (125NHG02B)	Bussmann	India	125A	500V	120kA	Blade Type	3	Each	17.60
689572	160A NH2 (160NHG02B)	Bussmann	India	160A	500V	120kA	Blade Type	3	Each	17.60
689580	200A NH2 (200NHG02B)	Bussmann	India	200A	500V	120kA	Blade Type	3	Each	17.60
685860	224A NH2 (224NHG02B)	Bussmann	India	224A	500V	120kA	Blade Type	3	Each	17.60
689890	250A NH2 (250NHG02B)	Bussmann	India	250A	500V	120kA	Blade Type	3	Each	17.60
689610	315A NH2 (315NHG2B)	Bussmann	India	315A	500V	120kA	Blade Type	3	Each	23.80
689629	355A NH2 (355NHG2B)	Bussmann	India	355A	500V	120kA	Blade Type	3	Each	25.90
689637	400A NH2 (400NHG2B)	Bussmann	India	400A	500V	120kA	Blade Type	3	Each	25.90
NH3 DIN HRC Fuselinks										
689645	315A NH3 (315NHG03B)	Bussmann	India	315A	500V	120kA	Blade Type	3	Each	30.90
689556	355A NH3 (355NHG03B)	Bussmann	India	355A	500V	120kA	Blade Type	3	Each	30.90
689599	400A NH3 (400NHG03B)	Bussmann	India	400A	500V	120kA	Blade Type	3	Each	31.60
689696	500A NH3 (500NHG3B)	Bussmann	India	500A	500V	120kA	Blade Type	3	Each	44.30
689718	630A NH3 (630NHG3B)	Bussmann	India	630A	500V	120kA	Blade Type	3	Each	45.20



C10G10 10x38

CYLINDRICAL 10X38 FUSELINKS (CLASS gG)

Part Number	Description	Brand	Origin	Amps	Volts	Break	Configuration	Box Qty	Unit	Trade NZ\$
Cylindrical 10x38 HRC Fuselinks (IEC 60269)										
654574	1A 10x38 Fuse (C10G1)	Bussmann	India	1A	500V	120kA	10x38mm Cylinder	10	Each	2.40
654299	2A 10x38 Fuse (C10G2)	Bussmann	India	2A	500V	120kA	10x38mm Cylinder	10	Each	2.40
654388	4A 10x38 Fuse (C10G4)	Bussmann	India	4A	500V	120kA	10x38mm Cylinder	10	Each	2.40
654302	6A 10x38 Fuse (C10G6)	Bussmann	India	6A	500V	120kA	10x38mm Cylinder	10	Each	2.40
654310	10A 10x38 Fuse (C10G10)	Bussmann	India	10A	500V	120kA	10x38mm Cylinder	10	Each	2.40
654329	16A 10x38 Fuse (C10G16)	Bussmann	India	16A	500V	120kA	10x38mm Cylinder	10	Each	2.40
654337	20A 10x38 Fuse (C10G20)	Bussmann	India	20A	500V	120kA	10x38mm Cylinder	10	Each	2.40
654353	25A 10x38 Fuse (C10G25)	Bussmann	India	25A	500V	120kA	10x38mm Cylinder	10	Each	2.40
654345	32A 10x38 Fuse (C10G32)	Bussmann	India	32A	500V	120kA	10x38mm Cylinder	10	Each	2.40
Fuseholder for 10x38 Fuses (IEC 60269/60947)										
666858	CHMID Fuseholder	Bussmann	China	32A	690V	120kA	10x38mm Cylinder	12	Each	10.70

COOPER BUSSMANN HRC 240V High Speed FUSES

BS88 'T' TYPE HIGH-SPEED SEMI-CONDUCTOR FUSELINKS

Part Number	Description	Brand	Origin	Amps	Volts AC	Volts DC	Length	A2T	Box Qty	Unit	Trade NZ\$
LCT High Speed Fuses											
684848	6LCT	Bussmann	India	6A	240V	150V	38mm	9	20	Each	14.00
684856	10LCT	Bussmann	India	10A	240V	150V	38mm	22	20	Each	14.00
684880	12LCT	Bussmann	India	12A	240V	150V	38mm	32	20	Each	14.00
684864	16LCT	Bussmann	India	16A	240V	150V	38mm	100	20	Each	14.00
684872	20LCT	Bussmann	India	20A	240V	150V	38mm	160	20	Each	14.00
LET High Speed Fuses											
685003	25LET	Bussmann	India	25A	240V	150V	42mm	250	10	Each	36.30
685011	32LET	Bussmann	India	32A	240V	150V	42mm	450	10	Each	36.30
685038	35LET	Bussmann	India	35A	240V	150V	42mm	600	10	Each	36.30
684937	50LET	Bussmann	India	50A	240V	150V	42mm	1400	10	Each	36.30
685046	63LET	Bussmann	India	63A	240V	150V	42mm	2200	10	Each	36.30
685054	80LET	Bussmann	India	80A	240V	150V	42mm	3800	10	Each	36.30
685062	100LET	Bussmann	India	100A	240V	150V	42mm	7500	10	Each	36.30
685070	125LET	Bussmann	India	125A	240V	150V	42mm	7500	10	Each	36.30
685089	160LET	Bussmann	India	160A	240V	150V	42mm	16000	10	Each	36.30
685097	180LET	Bussmann	India	180A	240V	150V	42mm	29000	10	Each	36.30
LMT High Speed Fuses											
685275	160LMT	Bussmann	India	160A	240V	150V	59mm	16000	1	Each	75.20
685283	200LMT	Bussmann	India	200A	240V	150V	59mm	20000	1	Each	75.20
685291	250LMT	Bussmann	India	250A	240V	150V	59mm	40000	1	Each	75.20
685305	315LMT	Bussmann	India	315A	240V	150V	59mm	75000	1	Each	80.40
685313	355LMT	Bussmann	India	355A	240V	150V	59mm	100000	1	Each	80.40
685321	400LMT	Bussmann	India	400A	240V	150V	59mm	160000	1	Each	87.40
685348	450LMT	Bussmann	India	450A	240V	150V	59mm	220000	1	Each	100.70

COOPER BUSSMANN HRC 690V High Speed FUSES



BS88 'T' TYPE HIGH-SPEED SEMI-CONDUCTOR FUSELINKS

Part Number	Description	Brand	Origin	Amps	Volts AC	Volts DC	Length	A2T	Box Qty	Unit	Trade NZ\$
CT High Speed Fuses											
690686	6CT	Bussmann	India	6A	690V	500V	64mm	12	20	Each	16.20
690694	10CT	Bussmann	India	10A	690V	500V	64mm	48	20	Each	16.20
690708	12CT	Bussmann	India	12A	690V	500V	64mm	65	20	Each	16.20
690716	16CT	Bussmann	India	16A	690V	500V	64mm	110	20	Each	16.20
690724	20CT	Bussmann	India	20A	690V	500V	64mm	220	20	Each	16.20
FE High Speed Fuses											
690791	35FE	Bussmann	India	35A	690V	500V	64mm	200	20	Each	37.30
690805	40FE	Bussmann	India	40A	690V	500V	64mm	200	20	Each	37.30
690813	45FE	Bussmann	India	45A	690V	500V	64mm	200	20	Each	37.30
690821	50FE	Bussmann	India	50A	690V	500V	64mm	200	20	Each	37.30
690848	63FE	Bussmann	India	63A	690V	500V	64mm	200	20	Each	37.30
FEE High Speed Fuses											
690899	100FEE	Bussmann	India	100A	690V	500V	70mm	2400	5	Each	80.70
690902	120FEE	Bussmann	India	120A	690V	500V	70mm	3100	5	Each	80.70
684503	140FEE	Bussmann	India	140A	690V	500V	70mm	3800	5	Each	80.70
690910	160FEE	Bussmann	India	160A	690V	500V	70mm	5700	5	Each	83.90
691003	200FEE	Bussmann	India	200A	690V	500V	70mm	11400	5	Each	90.90
FM High Speed Fuses											
690937	180FM	Bussmann	India	180A	690V	500V	85mm	13500	1	Each	87.00
690945	200FM	Bussmann	India	200A	690V	500V	85mm	18500	1	Each	87.00
691801	225FM	Bussmann	India	225A	690V	500V	85mm	26500	1	Each	91.40
690953	250FM	Bussmann	India	250A	690V	500V	85mm	37500	1	Each	91.40
690961	280FM	Bussmann	India	280A	690V	500V	85mm	55000	1	Each	100.60
690988	315FM	Bussmann	India	315A	690V	500V	85mm	77000	1	Each	111.40

COOPER BUSSMANN HRC J-Type FUSELINKS



76mm Centre



300-1 Carrier for 76mm



82mm Centre

76 & 82MM J-TYPE FUSELINKS & CARRIERS

Part Number	Description	Brand	Origin	Amps	Volts	Fixing Centre	Standard	Box Qty	Unit	Trade NZ\$
76mm Centre J-Type Fuselinks										
647233	63A 76mm (63MJ29-6)	Bussmann	India	63A	415V	76mm	IEC 60269-1	5	Each	25.50
647268	100A 76mm (100MJ29-6)	Bussmann	India	100A	415V	76mm	IEC 60269-1	5	Each	25.50
647276	125A 76mm (125MJ29-6)	Bussmann	India	125A	415V	76mm	IEC 60269-1	5	Each	25.50
647284	160A 76mm (160MJ29-6)	Bussmann	India	160A	415V	76mm	IEC 60269-1	5	Each	25.50
647292	200A 76mm (200MJ29-6)	Bussmann	India	200A	415V	76mm	IEC 60269-1	5	Each	25.50
647306	250A 76mm (250MJ29-6)	Bussmann	India	250A	415V	76mm	IEC 60269-1	5	Each	25.50

Part Number	Description	Brand	Origin	Amps	Colour	Construction	Standard	Weight	Box Qty	Unit	Trade NZ\$
Carriers for J-Type 76mm Fuses											
468622	NZI 300-1 Shrouded Carrier	NZI	NZ	200A	White	Porcelain & ETPNFM	AS/NZS 3947	600g	1	Each	91.70
470732	NZI 300-8 Base Only	NZI	NZ	200A	White	Formica & ETPNFM	AS/NZS 3947	700g	1	Each	142.10

Part Number	Description	Brand	Origin	Amps	Volts	Fixing Centre	Standard	Box Qty	Unit	Trade NZ\$
82mm Centre J-Type Fuselinks										
647373	32A 82mm (32MJ30-8)	Bussmann	India	32A	415V	82mm	IEC 60269-1	5	Each	27.10
647381	40A 82mm (40MJ30-8)	Bussmann	India	40A	415V	82mm	IEC 60269-1	5	Each	27.10
647403	63A 82mm (63MJ30-8)	Bussmann	India	63A	415V	82mm	IEC 60269-1	5	Each	27.10
647411	80A 82mm (80MJ30-7)	Bussmann	India	80A	415V	82mm	IEC 60269-1	5	Each	27.10
647438	100A 82mm (100MJ30-7)	Bussmann	India	100A	415V	82mm	IEC 60269-1	5	Each	27.10
647446	125A 82mm (125MJ30-7)	Bussmann	India	125A	415V	82mm	IEC 60269-1	5	Each	27.10
647454	160A 82mm (160MJ30-7)	Bussmann	India	160A	415V	82mm	IEC 60269-1	5	Each	27.10
647462	200A 82mm (200MJ30-7)	Bussmann	India	200A	415V	82mm	IEC 60269-1	5	Each	27.10
647470	250A 82mm (250MJ30-7)	Bussmann	India	250A	415V	82mm	IEC 60269-1	5	Each	27.10
647489	315A 82mm (315MJ30-7)	Bussmann	India	315A	415V	82mm	IEC 60269-1	5	Each	27.10
647659	355A 82mm (355PJ30-7)	Bussmann	India	355A	415V	82mm	IEC 60269-1	5	Each	41.60
647667	400A 82mm (400PJ30-7)	Bussmann	India	400A	415V	82mm	IEC 60269-1	5	Each	41.60

82 & 92MM J-TYPE FUSELINKS & CARRIERS

Part Number	Description	Brand	Origin	Amps	Colour	Construction	Standard	Weight	Box Qty	Unit	Trade NZ\$
Carriers for J-Type 82mm Fuses											
468592	NZI 325-5 Unshrouded Carrier	NZI	NZ	400A	Grey	Porcelain & ETPNFM	AS/NZS 3947	900g	1	Each	102.10
468614	NZI 325-7 Shrouded Carrier	NZI	NZ	400A	White	Porcelain & ETPNFM	AS/NZS 3947	1.1kg	1	Each	115.40
469726	NZI 325 Slotted Shorting Link	NZI	NZ	400A		Copper ETP	AS/NZS 3947	110g	1	Each	19.70
469858	NZI 325-8 Base Only	NZI	NZ	400A		Formica & ETPNFM	AS/NZS 3947	1.2kg	1	Each	136.50
468657	NZI 3.25" Outdoor Wedge Complete	NZI	NZ	400A	White	Porcelain & ETPNFM	AS/NZS 3947	5.1kg	1	Each	328.40

Part Number	Description	Brand	Origin	Amps	Volts	Fixing Centre	Standard	Box Qty	Unit	Trade NZ\$
92mm Centre J-Type Fuselinks										
658650	32A 92mm (32MJ31-8)	Bussmann	India	33A	415V	92mm	IEC 60269-1	5	Each	33.00
647535	40A 92mm (40MJ31-8)	Bussmann	India	40A	415V	92mm	IEC 60269-1	5	Each	33.00
647543	63A 92mm (63MJ31-8)	Bussmann	India	63A	415V	92mm	IEC 60269-1	5	Each	33.00
647551	80A 92mm (80MJ31-7)	Bussmann	India	80A	415V	92mm	IEC 60269-1	5	Each	33.00
647578	100A 92mm (100MJ31-7)	Bussmann	India	100A	415V	92mm	IEC 60269-1	5	Each	33.00
647586	125A 92mm (125MJ31-7)	Bussmann	India	125A	415V	92mm	IEC 60269-1	5	Each	33.00
647594	160A 92mm (160MJ31-7)	Bussmann	India	160A	415V	92mm	IEC 60269-1	5	Each	33.00
647608	200A 92mm (200MJ31-7)	Bussmann	India	200A	415V	92mm	IEC 60269-1	5	Each	33.00
647616	250A 92mm (250MJ31-7)	Bussmann	India	250A	415V	92mm	IEC 60269-1	5	Each	33.00
647624	315A 92mm (315MJ31-7)	Bussmann	India	315A	415V	92mm	IEC 60269-1	5	Each	33.00
647675	355A 92mm (355PJ31-7)	Bussmann	India	355A	415V	92mm	IEC 60269-1	5	Each	36.20
647683	400A 92mm (400PJ31-7)	Bussmann	India	400A	415V	92mm	IEC 60269-1	5	Each	36.20
658782	450A 92mm (450RJ31-7)	Bussmann	India	450A	415V	92mm	IEC 60269-1	5	Each	44.00
647756	500A 92mm (500RJ31-7)	Bussmann	India	500A	415V	92mm	IEC 60269-1	5	Each	44.00
658804	560A 92mm (560SJ31-6)	Bussmann	India	560A	415V	92mm	IEC 60269-1	5	Each	52.40
647772	630A 92mm (630SJ31-6)	Bussmann	India	630A	415V	92mm	IEC 60269-1	5	Each	61.80

Part Number	Description	Brand	Origin	Amps	Volts	Construction	Standard	Weight	Box Qty	Unit	Trade NZ\$
Carrier for J-Type 92mm Fuses											
471011	NZI 3625-7 Shrouded Carrier	NZI	NZ	600A	White	Porcelain & ETPNFM	AS/NZS 3947	1.5kg	1	Each	125.10

COOPER BUSSMANN HRC Bottle FUSES



NEOZED (DO) & DIAZED (ND) FUSELINKS (CLASS GG) TO AS/NZS 60269

Part Number	Description	Brand	Origin	Amps	Volts	Length	Width	Nib Diameter	Box Qty	Unit	Trade
Neozed D01 Bottle Fuses											
687855	2NZ01	Bussmann	India	2A	440V	36mm	11mm		10	Each	2.70
687863	4NZ01	Bussmann	India	4A	440V	36mm	11mm		10	Each	2.70
687820	6NZ01	Bussmann	India	6A	440V	36mm	11mm		10	Each	2.70
687839	10NZ01	Bussmann	India	10A	440V	36mm	11mm		10	Each	2.70
687847	16NZ01	Bussmann	India	16A	440V	36mm	11mm		10	Each	2.70
Neozed D02 Bottle Fuses											
687901	20NZ02	Bussmann	India	20A	440V	36mm	15mm		10	Each	3.70
687928	25NZ02	Bussmann	India	25A	440V	36mm	15mm		10	Each	3.70
687936	35NZ02	Bussmann	India	35A	440V	36mm	15mm		10	Each	3.70
687944	50NZ02	Bussmann	India	50A	440V	36mm	15mm		10	Each	3.70
687952	63NZ02	Bussmann	India	63A	440V	36mm	15mm		10	Each	3.70
Diazed D16 Bottle Fuses											
690597	2D16	Bussmann	India	2A	500V	50mm	13.2mm	6mm	5	Each	1.90
690600	4D16	Bussmann	India	4A	500V	50mm	13.2mm	6mm	5	Each	1.90
690619	6D16	Bussmann	India	6A	500V	50mm	13.2mm	6mm	5	Each	1.90
690627	10D16	Bussmann	India	10A	500V	50mm	13.2mm	8mm	5	Each	1.90
690635	16D16	Bussmann	India	16A	500V	50mm	13.2mm	10mm	5	Each	1.90
690643	20D16	Bussmann	India	20A	500V	50mm	13.2mm	12mm	5	Each	1.90
690651	25D16	Bussmann	India	25A	500V	50mm	13.2mm	14mm	5	Each	1.90
Diazed D27 Bottle Fuses											
688657	2D27	Bussmann	India	2A	500V	50mm	21.5mm	6mm	5	Each	1.90
688665	4D27	Bussmann	India	4A	500V	50mm	21.5mm	6mm	5	Each	1.90
688673	6D27	Bussmann	India	6A	500V	50mm	21.5mm	6mm	5	Each	1.90
688681	10D27	Bussmann	India	10A	500V	50mm	21.5mm	8mm	5	Each	1.90
688703	16D27	Bussmann	India	16A	500V	50mm	21.5mm	10mm	5	Each	1.90
688711	20D27	Bussmann	India	20A	500V	50mm	21.5mm	12mm	5	Each	1.90
688738	25D27	Bussmann	India	25A	500V	50mm	21.5mm	14mm	5	Each	1.90



SELECTED OIL & FULL RANGE MV FUSELINKS

Part Number	Description	Brand	Origin	Amps	Volts	Break	Dimensions	Configuration	Box Qty	Unit	Trade NZ\$
12kV Fuses – Oil											
670251	6.3A Oil (120EFMA6.3)	Bussmann	India	6.3A	12kV	40kA	254Lx63.5Dmm	Ferrule	3	Each	221.80
670243	10A Oil (120EFMA10)	Bussmann	India	10A	12kV	40kA	254Lx63.5Dmm	Ferrule	3	Each	221.80
670278	16A Oil (120EFMA16)	Bussmann	India	16A	12kV	40kA	254Lx63.5Dmm	Ferrule	3	Each	221.80
670286	20A Oil (120EFMA20)	Bussmann	India	20A	12kV	40kA	254Lx63.5Dmm	Ferrule	3	Each	221.80
670065	25A Oil (120EFMA25)	Bussmann	India	25A	12kV	40kA	254Lx63.5Dmm	Ferrule	3	Each	221.80
670073	31.5A Oil (120EFMA31.5)	Bussmann	India	31.5A	12kV	40kA	254Lx63.5Dmm	Ferrule	3	Each	221.80
670081	40A Oil (120EFMA40)	Bussmann	India	40A	12kV	40kA	254Lx63.5Dmm	Ferrule	3	Each	221.80
670006	50A Oil (120EFMA50)	Bussmann	India	50A	12kV	40kA	254Lx63.5Dmm	Ferrule	3	Each	222.60
670014	63A Oil (120EFMA63)	Bussmann	India	63A	12kV	40kA	254Lx63.5Dmm	Ferrule	3	Each	224.90
670111	71A Oil (120HFMA71)	Bussmann	India	71A	12kV	40kA	254Lx63.5Dmm	Ferrule	3	Each	235.60
670138	80A Oil (120HFMA80)	Bussmann	India	80A	12kV	40kA	254Lx63.5Dmm	Ferrule	3	Each	235.60
12kV Fuses – Full Range											
670545	6.3A Full Range (12FDLSJ6.3)	Bussmann	UK	6.3A	12kV	50kA	292Lx51Dmm	Ferrule	3	Each	294.00
670553	10A Full Range (12FDLSJ10)	Bussmann	UK	10A	12kV	50kA	292Lx51Dmm	Ferrule	3	Each	294.00
670642	16A Full Range (12FDLSJ16)	Bussmann	UK	16A	12kV	50kA	292Lx51Dmm	Ferrule	3	Each	344.80
670502	20A Full Range (12FDLSJ20)	Bussmann	UK	20A	12kV	50kA	292Lx51Dmm	Ferrule	3	Each	344.80
671010	25A Full Range (12FDLSJ25)	Bussmann	UK	25A	12kV	50kA	292Lx51Dmm	Ferrule	3	Each	344.80
670499	31.5A Full Range (12FDLSJ31.5)	Bussmann	UK	31.5A	12kV	50kA	292Lx51Dmm	Ferrule	3	Each	390.80
670030	40A Full Range (12FFLSJ40)	Bussmann	UK	40A	12kV	50kA	292Lx76Dmm	Ferrule	3	Each	471.90
670510	50A Full Range (12FFLSJ50)	Bussmann	UK	50A	12kV	50kA	292Lx76Dmm	Ferrule	3	Each	528.80
670049	63A Full Range (12FFLSJ63)	Bussmann	UK	63A	12kV	50kA	292Lx76Dmm	Ferrule	3	Each	666.90
670057	80A Full Range (12FXLSJ80)	Bussmann	UK	80A	12kV	50kA	292Lx88Dmm	Ferrule	3	Each	853.30

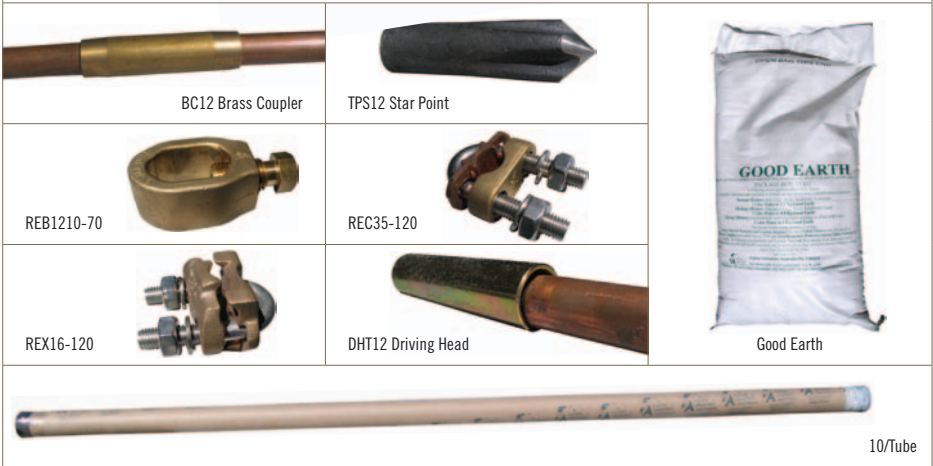


AVON HDG & STAINLESS STEEL EARTHING RODS

Part Number	Description	Brand	Origin	Length	Diameter	Construction	Weight	Pack Qty	Unit	Trade NZ\$
16mm HDG Pointed Steel Earth Rods										
537071	Avon AA24005 16mm HDG Earth Rod (no tab)	Avon	NZ	2.0m	16mm	HDG Steel	3.3kg	10	Each	36.80
537098	Avon AA24009 16mm HDG Earth Rod (with HD12A Tab)	Avon	NZ	2.0m	16mm	HDG Steel	3.3kg	10	Each	43.80
Coupler for Avon HDG Earth Rods										
537101	Avon AA24024 16mm HDG Earth Rod Coupler	Avon	NZ	110mm	16mm	HDG Steel	200g	10	Each	54.60
12mm Stainless Steel Tapered Earth Rod										
537128	Avon AA24021 12mm Stainless Earth Rod (no tab)	Avon	NZ	1.5m	12mm	316 Stainless	1.4kg	10	Each	114.80
Coupler for Avon Stainless Earth Rod										
537136	Avon AA24015 12mm Stainless Earth Rod Coupler	Avon	NZ	85mm	12mm	316 Stainless	50g	10	Each	53.20



12.8mm 1800mm 500micron Copper-Clad Earth Rod (to AS1572)



BC12 Brass Coupler

TPS12 Star Point

REB1210-70

REC35-120

REX16-120

DHT12 Driving Head

Good Earth

10/Tube

FULTON 13MM EARTH RODS, ACCESSORIES & COMPOUND

Part Number	Description	Brand	Origin	Diameter	Length	Detail	Weight	Pack Qty	Unit	Trade NZ\$
13mm Copper-Clad Earth Rod										
523097	Fulton CDR-12-1800 Earth Rod 500micron Copper-Clad to AS1572	Fulton	Australia	12.8mm	1800mm	Steel to AS3679	2.0kg	10	Each	29.40
Accessories for 13mm Earth Rods										
523100	Fulton BC12 Brass Coupler for 12mm	Fulton	Australia	Fit 12.8mm	70mm		70g	20	Each	19.30
523119	Fulton TPS12 Star Point	Fulton	Australia	Fit 12.8mm	72mm		100g	20	Each	31.10
523070	Fulton REB1210-70 Clamp	Fulton	Australia	Fit 12.8mm	40mm	Cable Range 10-70mm ²	100g	20	Each	29.60
523089	Fulton REC35-120 Clamp	Fulton	Australia	Fit 12.8mm	67mm	Cable Range 35-120mm ²	150g	10	Each	25.30
523844	Fulton REX16-120 Clamp	Fulton	Australia	Fit 12.8mm	64mm	Cable Range 16-120mm ²	260g	10	Each	59.60
523461	Fulton DHT12 Driving Head Tool	Fulton	Australia	Fit 12.8mm	102mm		300g	5	Each	36.50
523488	Fulton 900 Kango Driving Moil	Fulton	Australia	Fit 12.8mm			570g	1	Each	668.00
Earthing Compound										
523704	Fulton Good Earth	Fulton	Australia			Covers 0.03m ³	15kg	1	Bag	86.10



Shear Lock



TOD-4/12



TOD-7/19



CV6P



CV9P

ASSORTED FULTON CLAMPS & CONNECTORS

Part Number	Description	Brand Origin	Construction	Bolts	Conductor	Length	Weight	Box Qty	Unit	Trade NZ\$
Shear Lock Wedge Clamp										
524107	Fulton ECW-1 Shear Lock Clamp	Fulton Australia	Gunmetal ETP	304 Stainless	25-70mm ²	56mm	950g	25	Each	67.90
Tee-Off Connectors										
524018	Fulton TOD-4/12 Single Bolted Tee-Off	Fulton Australia	Aluminium	304 Stainless	4-12mm dia	51mm	200g	50	Each	29.10
523453	Fulton TOD-7/19 Single Bolted Tee-Off	Fulton Australia	Aluminium	304 Stainless	7-19mm dia	70mm	237g	50	Each	30.20
523003	Fulton TOD-4/12 Double Bolted Tee-Off	Fulton Australia	Aluminium	304 Stainless	4-12mm dia	70mm	400g	50	Each	39.70
523011	Fulton TOD-7/19 Double Bolted Tee-Off	Fulton Australia	Aluminium	304 Stainless	7-19mm dia	95mm	475g	30	Each	44.00
523720	Fulton TOD-7/19 Triple Bolted Tee-Off	Fulton Australia	Aluminium	304 Stainless	7-19mm dia	143mm	800g	10	Each	62.90
3-Piece Rising Main Connectors										
524026	Fulton CV3P Rising Main Connector	Fulton Australia	Gunmetal ETP	316 Stainless	50-95mm ²	58mm	425g	15	Each	75.30
524034	Fulton CV4P Rising Main Connector	Fulton Australia	Gunmetal ETP	316 Stainless	120-240mm ²	58mm	425g	15	Each	89.00
524042	Fulton CV5P Rising Main Connector	Fulton Australia	Gunmetal ETP	316 Stainless	120-300mm ²	58mm	610g	15	Each	95.90
524050	Fulton CV6P Rising Main Connector	Fulton Australia	Gunmetal ETP	316 Stainless	120-240mm ²	70mm	885g	15	Each	109.60
523747	Fulton CV8P Rising Main Connector	Fulton Australia	Gunmetal ETP	316 Stainless	300-800mm ²	77mm	950g	15	Each	116.40
524069	Fulton CV9P Rising Main Connector	Fulton Australia	Gunmetal ETP	316 Stainless	240-500mm ²	86mm	1.4kg	15	Each	137.00

**NEW ZEALAND INSULATORS LIMITED**

Established 1924

NZI Customer Service for NZ Wholesalers

Phone +64-3-6878100, Fax 03-6158125

Office Hours 7.30am – 5.00pm (weekdays)

Email sales@nzinsulators.co.nz

NZI Temuka Factory, HQ & South Island Warehouse

Thomas Street, PO Box 5, Temuka 7948

NZI Auckland Branch & North Island Warehouse

11 Wookey Lane, Kumeu 0810

Bank Westpac, 79 Queen Street, Auckland 03-0104-0427236-00

GST Number 96 873 670

NZI Brands NZI, Temuka Pottery, AX

Exclusive Distribution in NZ DTR, Payer, NGK Stanger, Fulton, Efen

Shared Distribution in NZ Cooper Bussmann, Red Spot, Avon

Websites nzinsulators.co.nz & temukapottery.co.nz

Timing

This LV Pocket Book was released on 29/10/12. It does not showcase NZI's entire range. The 2013 full-range NZI Catalogue will be published on 21/1/13.

LV & MV

NZI offers different products/pricing to the LV Wholesale channel, compared to MV networks (and their contractors). Wholesale outlets which are also MV Network Stores require two separate NZI accounts.

Pricing

Prices shown are NZ\$ excluding GST. Trade Prices are only a guide for wholesalers as to selling price, and wholesalers buy from NZI at a discount off that Trade Price. All prices are subject to change with 30 days prior notification.

Couriers & Full-Box Multiples

There is no minimum order. All Wholesaler orders exceeding \$100 + GST are freight free New Zealand wide. Orders under \$100 incur a courier charge, as per the current NZI Freight Rate Card – see the home page of nzinsulators.co.nz. Whenever possible, please order in full-box multiples.

Copyright

This catalogue, our coding, product images and the brands NZI, Temuka Pottery & AX are the intellectual property of New Zealand Insulators Limited.

Thank you for supporting NZI's Temuka factory.

To retain our vital (local) manufacturing capability, please specify NZI brand.



NEW ZEALAND INSULATORS



TEMUKA

NZI CUSTOMER SERVICES
7.30AM – 5.00PM WEEKDAYS
T 03-6878100
F 03-6158125
E sales@nzinsulators.co.nz

HQ & FACTORY
THOMAS STREET
PO BOX 5 TEMUKA 7948

AUCKLAND BRANCH
11 WOKEY LANE
KUMEU 0810

W nzinsulators.co.nz