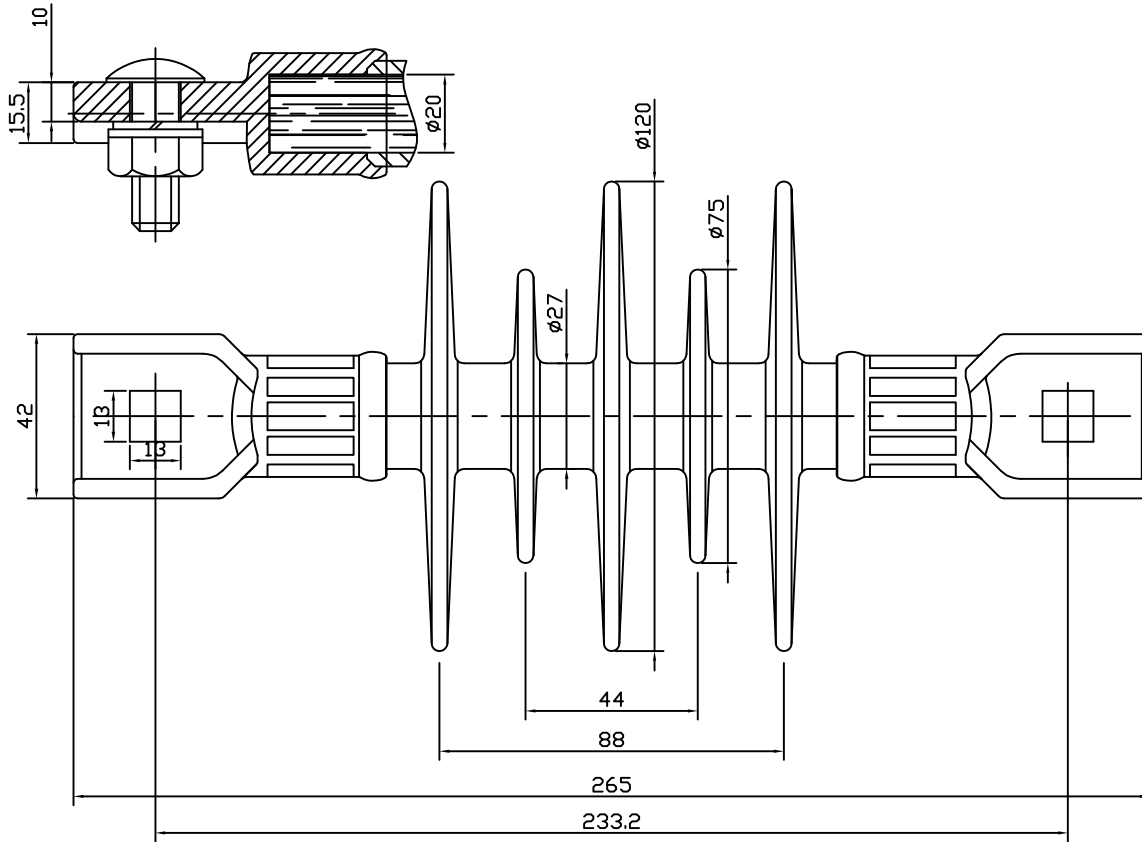


CATALOG NO. CI265-120AL

NO.	DESCRIPTION	DWG. NO.	MATERIAL	Q'TY	FINISH/SIZE	NOTE



DIMENSIONS

LEAKAGE DISTANCE	450mm(17.72inches)
DRY ARCING DISTANCE	180mm(7.09inches)
SHEDS Q'TY	5 PCS

MECHANICAL VALUES

SPECIFIED CANTILEVER LOAD	300Nm
Max. DESIGN CANTILEVER LOAD	230Nm
SPECIFIED TENSILE LOAD	9.8kN

ELECTRICAL VALUES

Low-Freq. FLASHOVER-DRY	75 kV
Low-Freq. FLASHOVER-WET	60 kV
IMPULSE FLASHOVER-POS	110 kV
IMPULSE FLASHOVER-NEG	125kV

PACKING INFORMATION

NET WEIGHT EACH	1.2 kg
NO. IN STANDARD PACKAGE	20 PCS

NOTE:

1. END FITTINGS ARE MADE FROM FORGED STEEL AND GALVANIZED
2. FIBERGLASS ROD IS MADE FROM EPOXY RESIN.
3. THE DIA. OF FRP ROD IS 20mm(0.79inches) SOLID.
4. THE TOLERANCE ON ALL DIMENSIONS SHALL BE AS FOLLOWS:
 $\pm(0.04d+1.5)$ mm when $d < 300$ mm
 $\pm(0.025d+6)$ mm when $d > 300$ mm with a maximum of 50mm

O.S	D.S	Q.A	MF	Purchase	Out Supplier

						DRAWN BY	DESIGNED BY	CHECKED BY	APPROVED BY	SCALE	DATE	NAME	Polymer Insulator for Distribution		
						J.H.PARK		D.H.YOO	C.H.PARK	1/1				COUPLING INSULATOR FOR KEPSCO	
						OCT.31.2013		OCT.31.2013	OCT.31.2013						
1/R	10/31/2013	INITIAL RELEASE	J.H.PARK	C.H.PARK		DTR CORPORATION						DWG.NO.	CI265-120AL		
NO.	DATE	REVISIONS	DESIGNED	APPROVED	REMARKS							REF.NO.		SHEET NO	