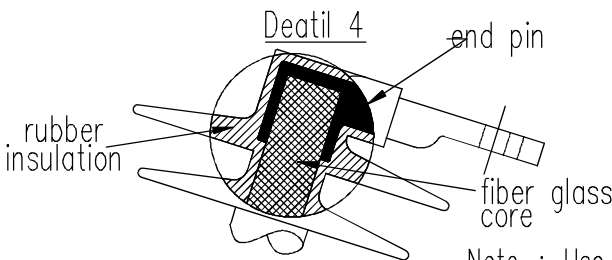
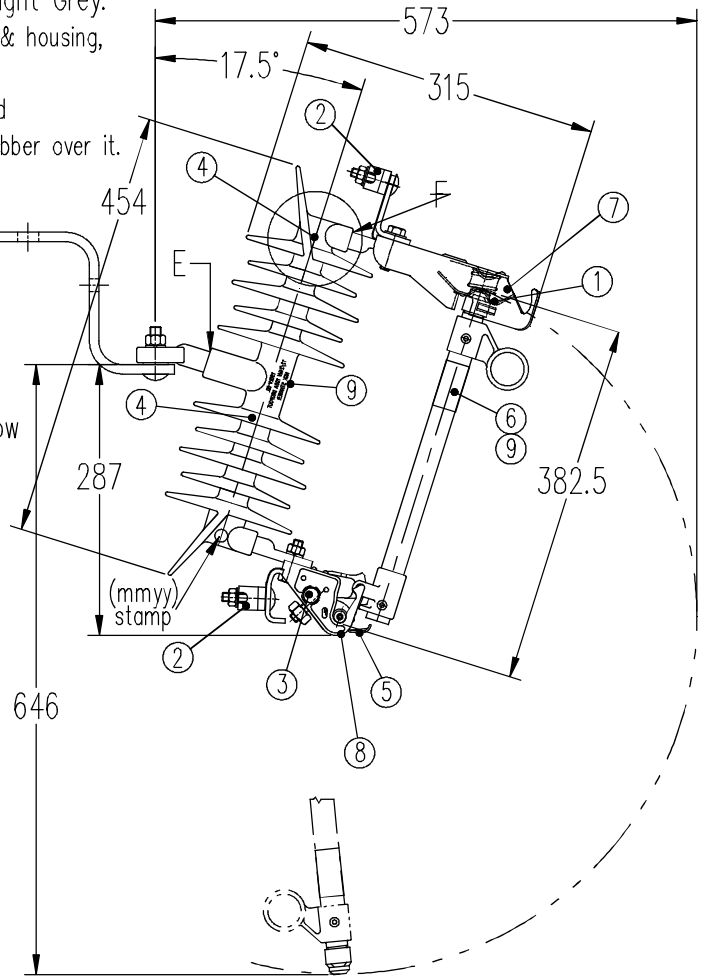


SHEET A4

- 1). Contacts. : High pressure silver to silver, wiping action.
- 2). Cable Clamps. : Parallel groove type.  $13\text{mm}^2 - 125\text{mm}^2$  (250 MCM).  
Copper or Aluminium cable. Clamp can be rotated for In-line or Side entry.
- 3). Earth Support Terminals. : Right hand or Left hand mounted. M10 x 120 bolt
- 4). Insulator : Inherently puncture proof. Colour : Light Grey.  
COMPOSITE Insulator: F/Glass core with POLYMER sheds & housing,  
Extra thick silicon rubber 4.5mm around centre pin,  
End pins are with blind holes and ends of fiber glass rod are not exposed, they are covered by metal & silicon rubber over it.  
Extended creepage distance E to F 820mm.

Supplied with  
'Z' Type 69196/1  
Mounting Bracket.

- 5). Fuselink Ejector.: Spring loaded, gives positive low fault interruption. In-built latch relieves excessive tension from fuselink. Inherently wasp proof.
- 6). Reflective Tape. : For indication at night.
- 7). Hood. : Stainless Steel.
- 8). Hinge. : Cast Brass.
- 9). Nameplate Information.



Note. : Use only recommended fuselinks Arc-shortening rod must be used to achieve max. interrupting rating.

Technical Data

<p>A) Ratings</p> <p>Rated Voltage. (max.) Nominal Voltage. Rated Frequency. Max. Rated Normal Current. Insulation Level.</p> <p>Rated Breaking Capacity.</p> <p style="margin-left: 40px;">@ 12 kV.                      rms sym. @ 24 kV.                        rms sym.</p>	<p>U = 12 kV, 24 kV V<sub>n</sub> = 11 kV, 22 kV</p> <p>I = 50 Hz, 100 A B.I.L = 150 kV.</p> <p>I<sub>br</sub> = 8 kA, 6 kA</p>	<p>B) Clearance Distances</p> <p>Creepage.                      L<sub>s</sub> = 820 mm</p> <p>C). Temperature Rise.</p> <p>Contacts.                      &lt; 40° C Terminals.                      &lt; 40° C</p> <p>D). Test Voltage.</p> <p>Terminal To Earth. 50 Hz Dry W/Stand                      60 kV 50 Hz Wet W/Stand                      50 kV 1.2 X 50 Impulse W/Stand                      150 kV</p> <p>E). Weight.</p> <p>Net (w/o Mtg Bkt)                      4.7 kg Gross    6.5 kg</p>	
---	---	---	--

This document is the property of NGK STANGER P/L and must not be copied or reproduced without its written permission nor disclosed to any third party.

3	Insulator 73098SIG, Drg Updated.	CHANGE	SCALE	1 : 8
2	17.5' added.		DRN.	S.d.e.e
1	Original		CH'D.	S.d.e.e
			APP'D.	
			ISSUED	26-5-06

Type C – COMPOSITE Insulator Type  
12/24 kV DROPOUT 150kV BIL.  
( 366mm Fuse Holder. )  
Galvanized Steel Pin.

Quality  
Endorsed  
Company

AS/NZS ISO 9001:2008



**NGK STANGER**

NGK STANGER Pty. Ltd. A.B.N. 89 004 225 012  
MELBOURNE AUSTRALIA

SIZE	DRAWING No.	ISSUE
A4	72298/17	5