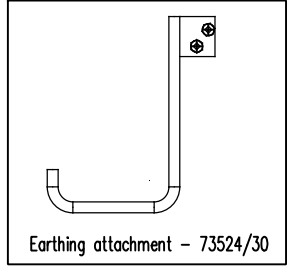
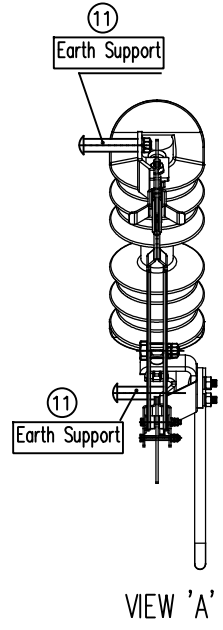
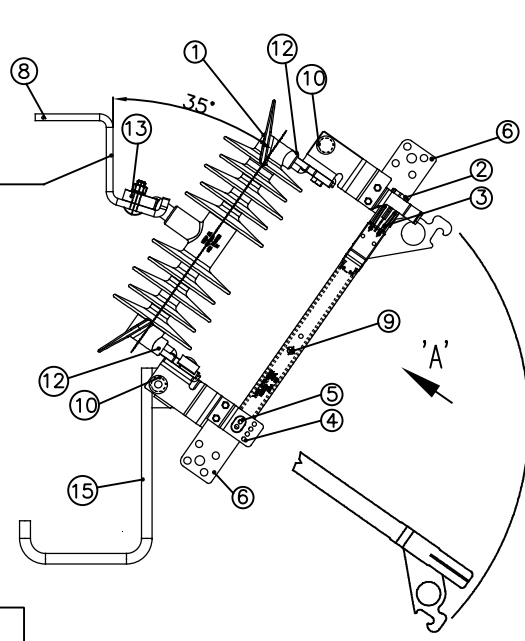


35° MOUNTED

Anti-Rotating Locking Feature



Notes: -

- 1). Insulator : Inherently puncture proof. Colour : Light Grey. COMPOSITE Insulator: F/Glass core with POLYMER sheds & housing. Extra thick silicon rubber 4.5mm around centre pin, End pins are with blind holes and ends of fiber glass rod are not exposed, they are covered by metal & silicon rubber over it. Extended creepage distance E to F 820mm. Supplied with 'Z' Type Mounting Bracket. (Plain w/o Spikes) for use on F/Glass X-Arm.
- 2). Silver to silver front contacts.
- 3). Front contact pressure assured via stainless steel 'Lyre' springs.
- 4). 90° Removable Stop.
- 5). Hinge Joint: Silver washers with constant pressure 'Belleville' washers.
- 6). Multi-purpose terminal palm, for compression lugs or cable clamps. Refer Price List for cable clamp kits available.
- 7). All parts for contact blade (3mm or less) manufactured from non-ferrous or stainless material, for max. corrosion protection.
- 8). Crossarm Mounting Bracket & Cable Clamps supplied loose, to be fitted at installation. Fasteners should be stainless steel-69196/10-M.S-Galvanized
- 9). Spacer
- 10). Support bracket made of 6mm S.S 316 material - 70453/2
- 11). Earth Support : Copper Alloy Tube with M10 x 100 Galv. Steel Bolt -Qty: 2off
- 12). Bushing support pin - SS304
- 13). Hood pin - SS304
- 14). All fasteners and washers should be stainless steel grade
- 15). Earthing attachment - SS316 - 73524/30

STAINLESS STEEL VERSION

Applicable Standard.: AS1306 / 2650

| A) Ratings | | U = | | kV. | kV. | B) Clearance Distances : | | L _s = | 820 mm |
|--|--|--------------------------------|--|---------|------|------------------------------|--|---------------------------|--------|
| Rated Voltage. (max.) | | V _n = | | 12 | 24 | Creepage. | | | |
| Nominal Voltage | | | | 11 | 22 | C). Temperature Rise : | | Contacts. | |
| Insulation Level | | B.I.L | | 150 kV. | | Terminals. | | 32 °C | |
| Max. Rated Normal Current. | | I _n = | | 630 A | | D). Dielectric Test Voltage: | | 32 °C | |
| Rated Frequency. | | | | 50 Hz. | | Terminal To Earth : | | 50 Hz. Dry W/Stand. | |
| Rated Breaking Capacity (Mainly Active Load) A | | I _{br} = | | — | | 50 Hz. Wet W/Stand. | | 60 kV | |
| Rated Short - Time Current 1s | | I _{sc} = | | 20 kA. | | 1.2 x 50 Impulse W/Stand. | | 150 kVp. | |
| Pollution Performance No. | | P = | | 76.5 | 9.6 | Terminal To Terminal : | | 50 Hz. Dry W/Stand. | |
| E.S.A.A. Med. Rainfall. | | | | 66.9 | 8.4 | 50 Hz. Wet W/Stand. | | 60 kV | |
| High | | | | 83.8 | 10.5 | 1.2 x 50 Impulse W/Stand. | | 170 kVp. | |
| Low | | | | 74.5 | 37.3 | E). Weight : | | Net (With Mounting Brkt.) | |
| Specific Creepage. | | L _s /V _n | | mm/kV. | | | | 6.8 kg | |

This document is the property of NGK STANGER P/L and must not be copied or reproduced without its written permission nor disclosed to any third party.

| ISSUE | CHANGE | DATE | DRN | AUTH |
|-------|------------------------|-------|---------|---------|
| 3 | Note number correction | 06-22 | SRIDHAR | UJIHARA |
| 2 | Earth support updated | 10-21 | RAMANA | UJIHARA |
| 1 | Original | 07-21 | RAMANA | UJIHARA |

| | |
|--------|----------|
| SCALE | 1 : 1 |
| DRN. | RAMANA |
| CH'D. | RAMANA |
| APP'D. | UJIHARA |
| ISSUED | 08/07/21 |

C - Type POLYMER MVI
12/24kV. Single Pole Isolating Link.
150 kV BIL

Quality
Endorsed
Company
AS/NZS ISO 9001:2015
Standards Australia

NGK STANGER

 NGK STANGER Pty. Ltd. A.B.N. 89 004 225 012
 MELBOURNE AUSTRALIA

| SIZE | DRAWING No. | ISSUE |
|------|-------------|-------|
| A4 | 70414/AUG1 | 3 |