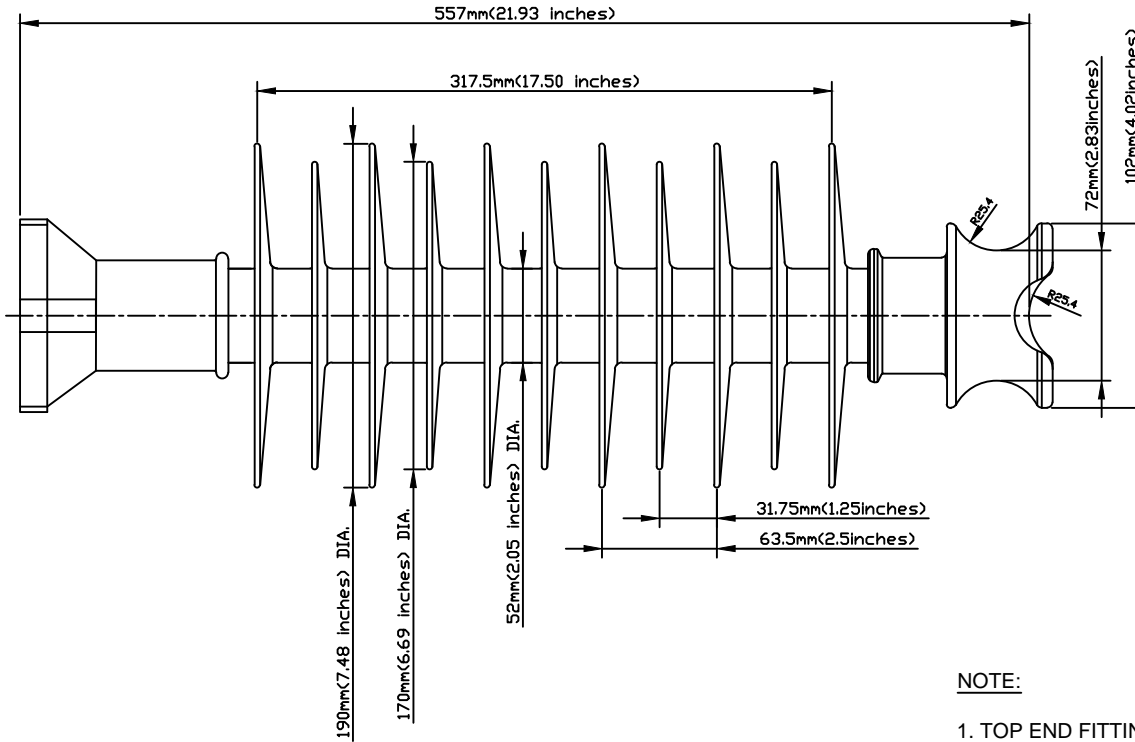
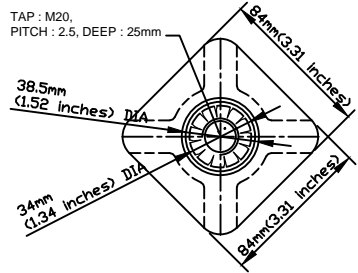


CODE No. LPFN-46SK-HP-M20

NO.	DESCRIPTION	DWG. NO.	MATERIAL	Q'TY	FINISH/SIZE	NOTE



DIMENSIONS

LEAKAGE DISTANCE	1,703 mm
DRY ARCING DISTANCE	433 mm
SHEDS Q'TY	11 PCS

MECHANICAL VALUES

SPECIFIED CANTILEVER LOAD	12.5 kN
Max. DESIGN CANTILEVER LOAD	6 kN
TENSILE STRENGTH	22 kN

ELECTRICAL VALUES

Low-Freq. FLASHOVER-DRY	186 kV
Low-Freq. FLASHOVER-WET	152 kV
IMPULSE FLASHOVER-POS	277 kV
IMPULSE FLASHOVER-NEG	307 kV
Low-Freq. WITHSTAND-DRY	150 kV
Low-Freq. WITHSTAND-WET	120 kV
IMPULSE WITHSTAND-POS	255 kV
IMPULSE WITHSTAND-NEG	280 kV

PACKING INFORMATION

NET WEIGHT EACH	7.59 kg
NO. IN STANDARD PACKAGE	1 PCS

NOTE:

- TOP END FITTING IS MADE FROM ALUMINUM ALLOY.
- BASE END FITTING IS MADE FROM CARBON STEEL FORGED & GALVANIZED.
- FIBERGLASS ROD IS MADE FROM EPOXY RESIN.
- STUD BASE DIMENSIONS ARE IN ACCORDANCE WITH ANSI C29.18
- THE DIA. OF FRP ROD IS 45mm(1.77inches) SOLID.
- BASE AND INSULATOR ASSEMBLED WITH M20 BOLT AND WASHER.
- THE TOLERANCE ON ALL DIMENSIONS SHALL BE AS FOLLOWS:
 $\pm(0.04d+1.5)$ mm when $d < 300$ mm
 $\pm(0.025d+6)$ mm when $d > 300$ mm with a maximum of 50mm

NO.	DATE	REVISIONS	DESIGNED	APPROVED	REMARKS	DRAWN BY	DESIGNED BY	CHECKED BY	APPROVED BY	SCALE	DATE	NAME	Polymer Line Post Insulator for Distribution 46kV HP F-NECK LP Insulator	REF.NO.	SHEET NO
1/R	02/09/2017	INITIAL RELEASE	J.H.PARK	C.H.PARK		J.H.PARK			C.H.PARK	1/1	FEB.09.2019				
												REF.NO.		SHEET NO	
												DWG.NO.	LPFN-46SK-HP-M20		