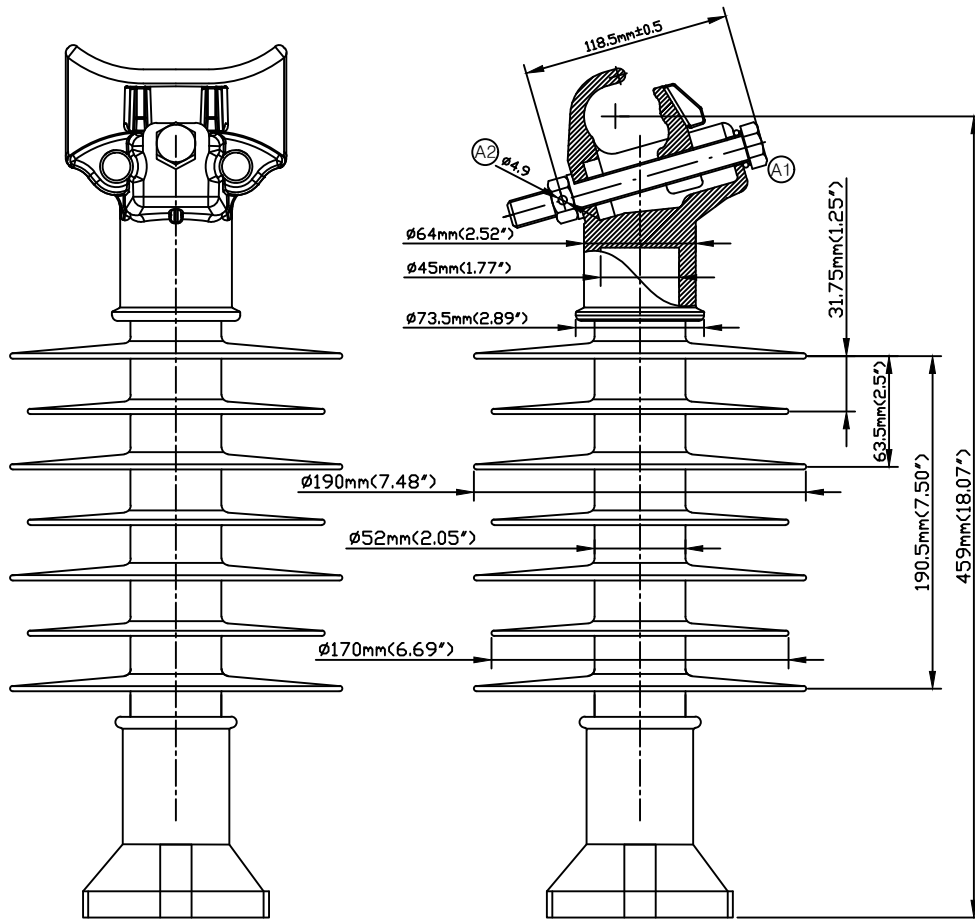


# CATALOG NO. LPSC-35SK-HP-M20



**NOTE:**

- TOP END FITTING IS MADE FROM ALUMINUM ALLOY & ANODIZED.
- BASE END FITTING IS MADE FROM STEEL FORGED & GALVANIZED.
- FIBERGLASS ROD IS MADE FROM EPOXY RESIN (ECR).
- CLAMP AND STUD BASE DIMENSIONS ARE IN ACCORDANCE WITH ANSI C29.18.
- THE DIA. OF FRP ROD IS 45mm (1.77 inches) SOLID.
- BASE AND INSULATOR ASSEMBLED WITH M20 BOLT AND WASHER.
- THE THICKNESS OF HOT DIP GALVANIZING SHALL BE MINIMUM 79um ACCORDING TO ASTM A 153.
- THE TOLERANCE ON ALL DIMENSIONS SHALL BE AS FOLLOWS:  
 $\pm(0.04d+1.5)$ mm when  $d < 300$ mm  
 $\pm(0.025d+6)$ mm when  $d > 300$ mm with a maximum of 50mm

REVISIONS					
REV	LOCATION	NOTICE	DSN BY	APP BY	DATE
I/R		INITIAL RELEASE	J.H. PARK	C.H. PARK	06/17/2016
A		1. MOVED BOLT POSITION 2. CHANGED FIXED PIN SIZE (Ø5 to -) 3. ADDED MATERIAL DETAILS	B.J. KIM	D.H. YOO	07/25/2024

**DIMENSIONS**

LEAKAGE DISTANCE	1,090 mm
DRY ARCING DISTANCE	306 mm
SHEDS Q'TY	7 PCS

**MECHANICAL VALUES**

SPECIFIED CANTILEVER LOAD	12.5 kN
---------------------------	---------

**ELECTRICAL VALUES**

Low-Freq. WITHSTAND-WET	107 kV
IMPULSE WITHSTAND-POS	196 kV
IMPULSE WITHSTAND-NEG	218 kV

**PACKING INFORMATION**

NET WEIGHT EACH	7.02 kg
NO. IN STANDARD PACKAGE	1 PCS

**Material : Special Clamp**

1. Chemical Analysis (KS D 6008 : 2002) (Unit:wt%)

Element	Cu	Si	Mg	Zn	Fe	Mn
Spec	0.20 ↓	6.5~7.5	0.25~0.45	0.10 ↓	0.20 ↓	0.10 ↓
AC4CH	Ni	Ti	Pb	Sn	Cr	Al
	0.05 ↓	0.20 ↓	0.05 ↓	0.05 ↓	0.05 ↓	Rest

2. Mechanical Properties (KS D 6008 : 2002)

AC4CH-T6	Tensile Strength (kgf/cm <sup>2</sup> )	Elongation (%)	Brinell Hardness [HB(10/500)]
	240 ↑	5 ↑	about 85

3. Heat Treatment (KS D 6008 : 2002)

AC4CH-T6	Method	Solution Treatment		Age Hardening Treatment	
		Temperature (°C)	Time (h)	Temperature (°C)	Time (h)
	Age Hardening treatment after Solution Treatment	about 535	about 8	about 155	about 6

**Material : Stud Base**

1. Chemical Analysis (KS D 3752 : 2019) (Unit:wt%)

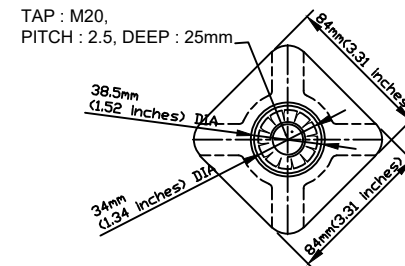
Element	C	Si	Mn	P	S
Spec	0.18~0.23	0.15~0.35	0.30~0.60	0.030 ↓	0.035 ↓
S20C					

2. Mechanical Properties (KS D 3752 : 2019)

S20C	Yield Point (kgf/cm <sup>2</sup> )	Tensile Strength (kgf/cm <sup>2</sup> )	Elongation (%)	Tightening (%)	Hardness (HB)
	25 ↑	41 ↑	26 ↑	-	116 ~ 174

3. Heat Treatment (KS D 3752 : 2019)

S20C	Method	Temperature (°C)
		Normalizing



REPLACEABLE MATERIAL	NO	PART NAME	EA	MATERIAL	DWG NO						
PART LISTS											
ORIGINAL DWG	COMMON TOLERANCE	DATE	07/25/2024								
	DECIMAL ANGLE FRACTION	APP DIVISION	R&D Team								
	MATERIAL	CHK BY	KC. PARK			APP BY	DH. YOO				
	HEAT TREATMENT	CHK BY	BJ. KIM			CHK BY					
	DWG DIVISION	DSN BY	CHK BY	TITLE Polymer Line Post Insulator for Distribution (35kV HP Special Clamp)							
RELEVANT DWG	APPLICABLE ITEM	R&D Team				SIZE	DWG NO				
PART NO		SCALE	1:1	UNIT	mm	WEIGHT		LPSC-35SK-HP-M20			
								SHEET	1	OF	1