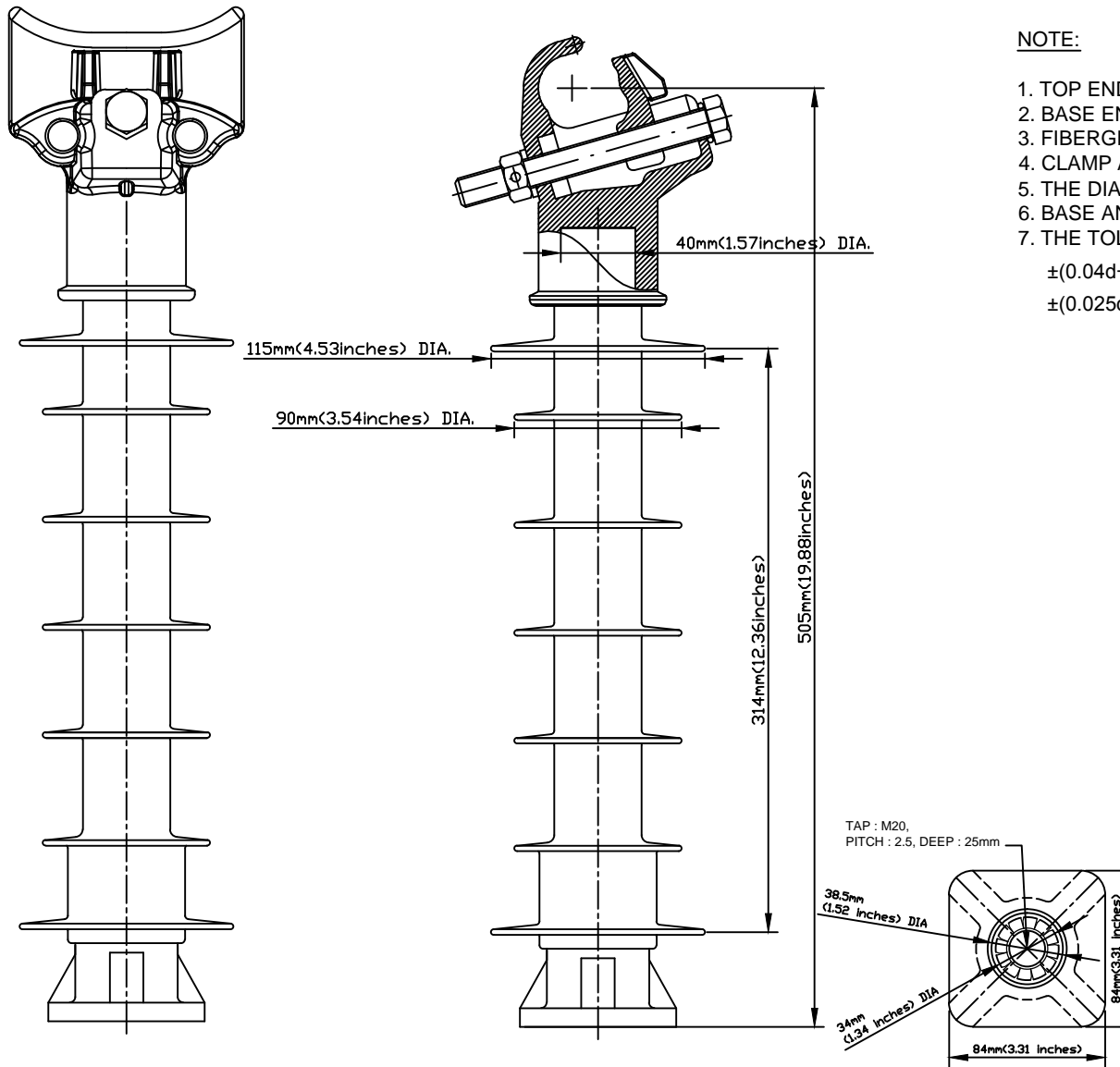


CATALOG NO. LPSC-35SK-M20

NO.	DESCRIPTION	DWG. NO.	MATERIAL	Q'TY	FINISH/SIZE	NOTE



NOTE:

1. TOP END FITTING IS MADE FROM GRAVITY CASTING ALUMINUM ALLOY & ANODIZED.
2. BASE END FITTING IS MADE FROM CARBON STEEL FORGED & GALVANIZED.
3. FIBERGLASS ROD IS MADE FROM EPOXY RESIN.
4. CLAMP AND STUD BASE DIMENSIONS ARE IN ACCORDANCE WITH ANSI C29.18.
5. THE DIA. OF FRP ROD IS 40mm(1.57inches) SOLID.
6. BASE AND INSULATOR ASSEMBLED WITH M20 BOLT AND WASHER.
7. THE TOLERANCE ON ALL DIMENSIONS SHALL BE AS FOLLOWS:

$\pm(0.04d+1.5)$ mm when $d<300$ mm

$\pm(0.025d+6)$ mm when $d>300$ mm with a maximum of 50mm

DIMENSIONS

LEAKAGE DISTANCE	648 mm(25.51 inches)
DRY ARCING DISTANCE	371 mm(14.61 inches)
SHEDS Q'TY	7 PCS

MECHANICAL VALUES

SPECIFIED CANTILEVER LOAD	12.5 kN(2,800 LB)
Max. DESIGN CANTILEVER LOAD	6 kN(1,350 LB)
TENSILE STRENGTH	22 kN(5,000 LB)

ELECTRICAL VALUES

Low-Freq. FLASHOVER-DRY	141 kV
Low-Freq. FLASHOVER-WET	122 kV
IMPULSE FLASHOVER-POS	239 kV
IMPULSE FLASHOVER-NEG	309 kV

RADIO INFLUENCE VOLTAGE DATA

60 Hz TEST VOLTAGE	22 kV
MAXIMUM RIV @ 1,000kHz	100 uV

PACKING INFORMATION

NET WEIGHT EACH	8.2 kg
NO. IN STANDARD PACKAGE	4 PCS

NO.	DATE	REVISIONS	DESIGNED	APPROVED	REMARKS	DRAWN BY	DESIGNED BY	CHECKED BY	APPROVED BY	SCALE	DATE	NAME	REF.NO.	SHEET NO
3						J.H.PARK			C.H.PARK	1/1			LINE POST INSULATOR FOR TRANSMISSION 35kV K-CLAMP LINE POST INSULATOR	
2						FEB.15.2017			FEB.15.2017			REF.NO.		
1/R	02/15/2017	INITIAL RELEASE	J.H.PARK	C.H.PARK								DWG.NO.	LPSC-35SK-M20	
NO.	DATE	REVISIONS	DESIGNED	APPROVED	REMARKS									