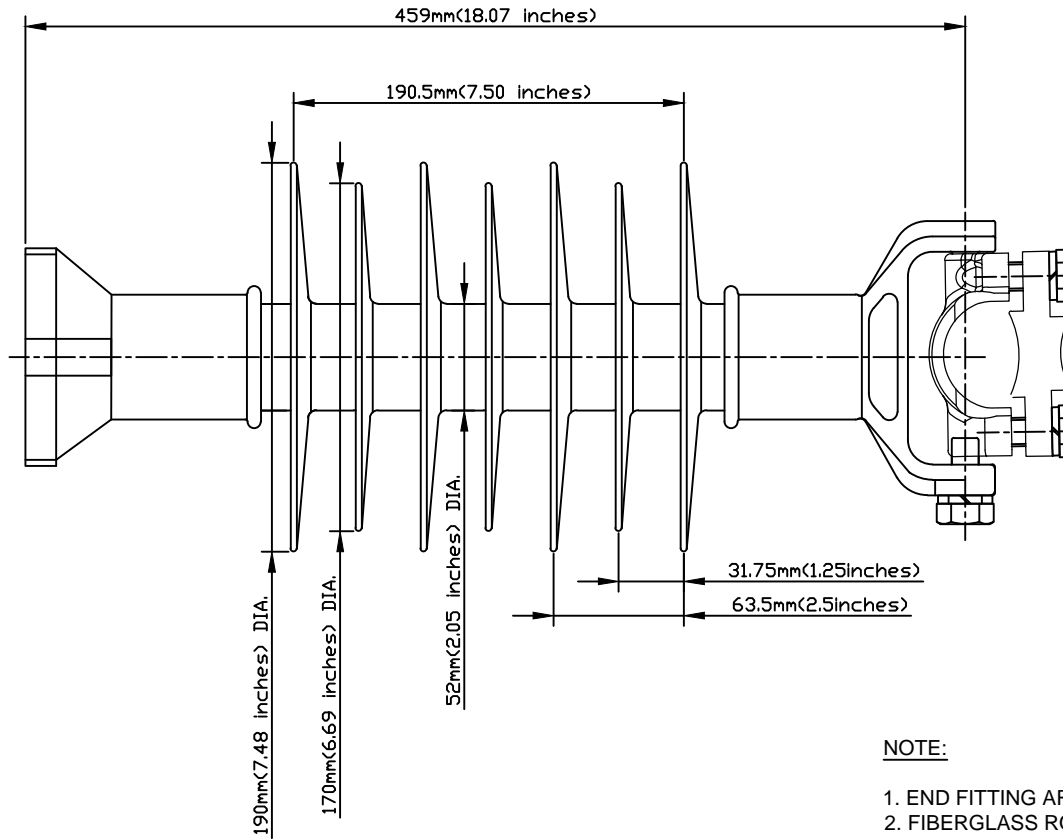
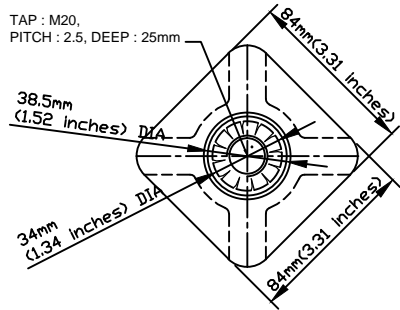


CODE No. LPV-35SK-HP-1-M20

NO.	DESCRIPTION	DWG. NO.	MATERIAL	Q'TY	FINISH/SIZE	NOTE



DIMENSIONS

LEAKAGE DISTANCE	1,090 mm
DRY ARCING DISTANCE	306 mm
SHEDS Q'TY	7 PCS

MECHANICAL VALUES

SPECIFIED CANTILEVER LOAD	12.5 kN
Max. DESIGN CANTILEVER LOAD	6 kN
TENSILE STRENGTH	22 kN

ELECTRICAL VALUES

Low-Freq. FLASHOVER-DRY	135 kV
Low-Freq. FLASHOVER-WET	107 kV
IMPULSE FLASHOVER-POS	196 kV
IMPULSE FLASHOVER-NEG	218 kV
Low-Freq. WITHSTAND-DRY	105 kV
Low-Freq. WITHSTAND-WET	85 kV
IMPULSE WITHSTAND-POS	180 kV
IMPULSE WITHSTAND-NEG	200 kV

PACKING INFORMATION

NET WEIGHT EACH	7.02 kg
NO. IN STANDARD PACKAGE	1 PCS

NOTE:

1. END FITTING ARE MADE FROM CARBON STEEL FORGED & GALVANIZED.
2. FIBERGLASS ROD IS MADE FROM EPOXY RESIN.
3. CLAMP AND STUD BASE DIMENSIONS ARE IN ACCORDANCE WITH ANSI C29.18
4. THE DIA. OF FRP ROD IS 45mm(1.77inches) SOLID.
5. BASE AND INSULATOR ASSEMBLED WITH M20 BOLT AND WASHER.
6. THE TOLERANCE ON ALL DIMENSIONS SHALL BE AS FOLLOWS:
 $\pm(0.04d+1.5)$ mm when $d < 300$ mm
 $\pm(0.025d+6)$ mm when $d > 300$ mm with a maximum of 50mm

NO.	DATE	REVISIONS	DESIGNED	APPROVED	REMARKS	DRAWN BY	DESIGNED BY	CHECKED BY	APPROVED BY	SCALE	DATE	NAME	REF. NO.	SHEET NO
						J.H.PARK			C.H.PARK	1/1			Polymer Line Post Insulator for Distribution 35kV HP VERTICAL LP Insulator with WC	
1/R	02/09/2017	INITIAL RELEASE	J.H.PARK	C.H.PARK		FEB.09.2019			FEB.09.2019					
													DWG.NO.	LPV-35SK-HP-1-M20

