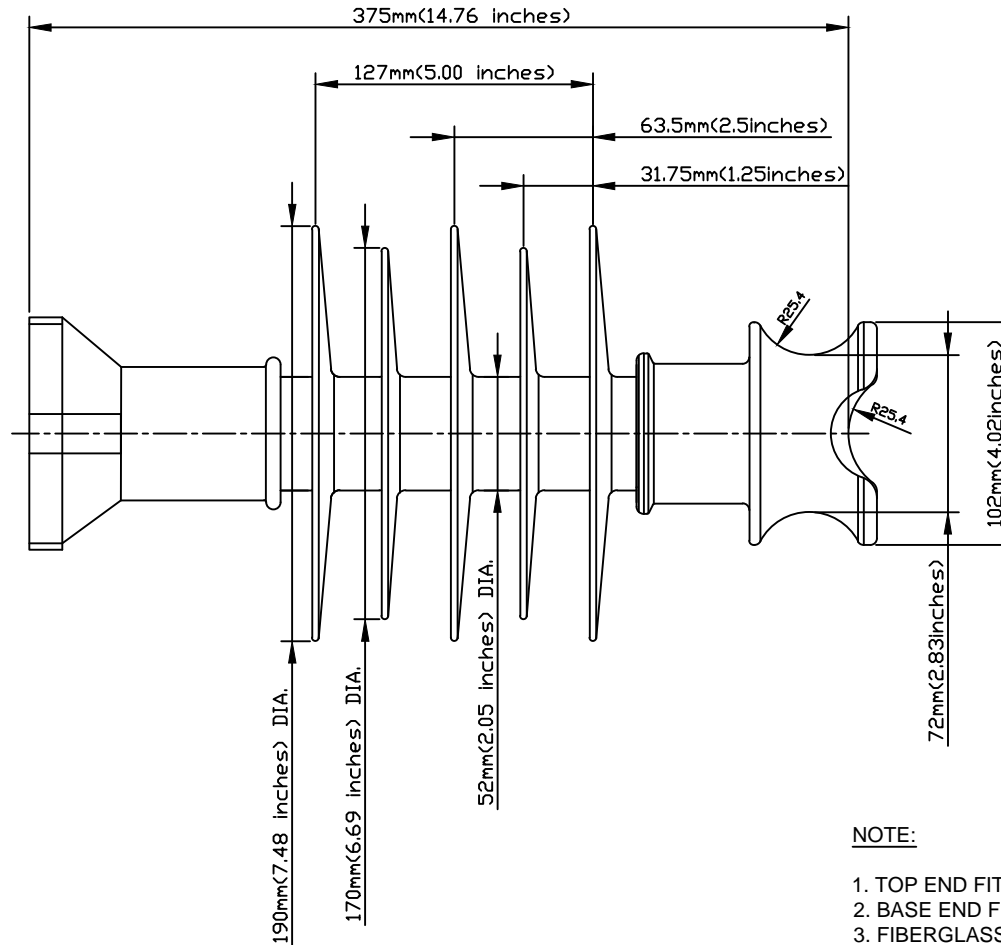
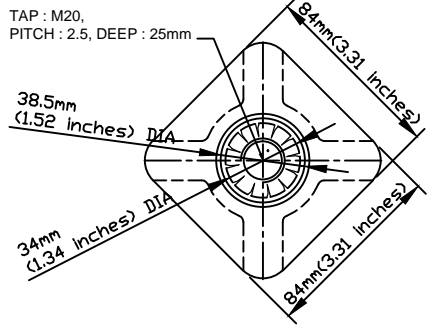


CODE No. LPFN-25SK-HP-M20

NO.	DESCRIPTION	DWG. NO.	MATERIAL	Q'TY	FINISH/SIZE	NOTE



<b>DIMENSIONS</b>	
LEAKAGE DISTANCE	783 mm
DRY ARCING DISTANCE	243 mm
SHEDS Q'TY	5 PCS
<b>MECHANICAL VALUES</b>	
SPECIFIED CANTILEVER LOAD	12.5 kN
Max. DESIGN CANTILEVER LOAD	6 kN
TENSILE STRENGTH	22 kN
<b>ELECTRICAL VALUES</b>	
Low-Freq. FLASHOVER-DRY	110 kV
Low-Freq. FLASHOVER-WET	85 kV
IMPULSE FLASHOVER-POS	156 kV
IMPULSE FLASHOVER-NEG	173 kV
Low-Freq. WITHSTAND-DRY	85 kV
Low-Freq. WITHSTAND-WET	65 kV
IMPULSE WITHSTAND-POS	140 kV
IMPULSE WITHSTAND-NEG	160 kV
<b>PACKING INFORMATION</b>	
NET WEIGHT EACH	6.06 kg
NO. IN STANDARD PACKAGE	1 PCS

**NOTE:**

1. TOP END FITTING IS MADE FROM ALUMINUM ALLOY.
2. BASE END FITTING IS MADE FROM CARBON STEEL FORGED & GALVANIZED.
3. FIBERGLASS ROD IS MADE FROM EPOXY RESIN.
4. STUD BASE DIMENSIONS ARE IN ACCORDANCE WITH ANSI C29.18
5. THE DIA. OF FRP ROD IS 45mm(1.77inches) SOLID.
6. BASE AND INSULATOR ASSEMBLED WITH M20 BOLT AND WASHER.
7. THE TOLERANCE ON ALL DIMENSIONS SHALL BE AS FOLLOWS:  
 $\pm(0.04d+1.5)$ mm when  $d < 300$ mm  
 $\pm(0.025d+6)$ mm when  $d > 300$ mm with a maximum of 50mm

NO.	DATE	REVISIONS	DESIGNED	APPROVED	REMARKS	DRAWN BY	DESIGNED BY	CHECKED BY	APPROVED BY	SCALE	DATE	NAME	Polymer Line Post Insulator for Distribution 25kV HP F-NECK LP Insulator	REF.NO.	SHEET NO
1/R	02/09/2017	INITIAL RELEASE	J.H.PARK	C.H.PARK		J.H.PARK			C.H.PARK	1/1	FEB.09.2019				
												REF.NO.		SHEET NO	
												DWG.NO.	LPFN-25SK-HP-M20		