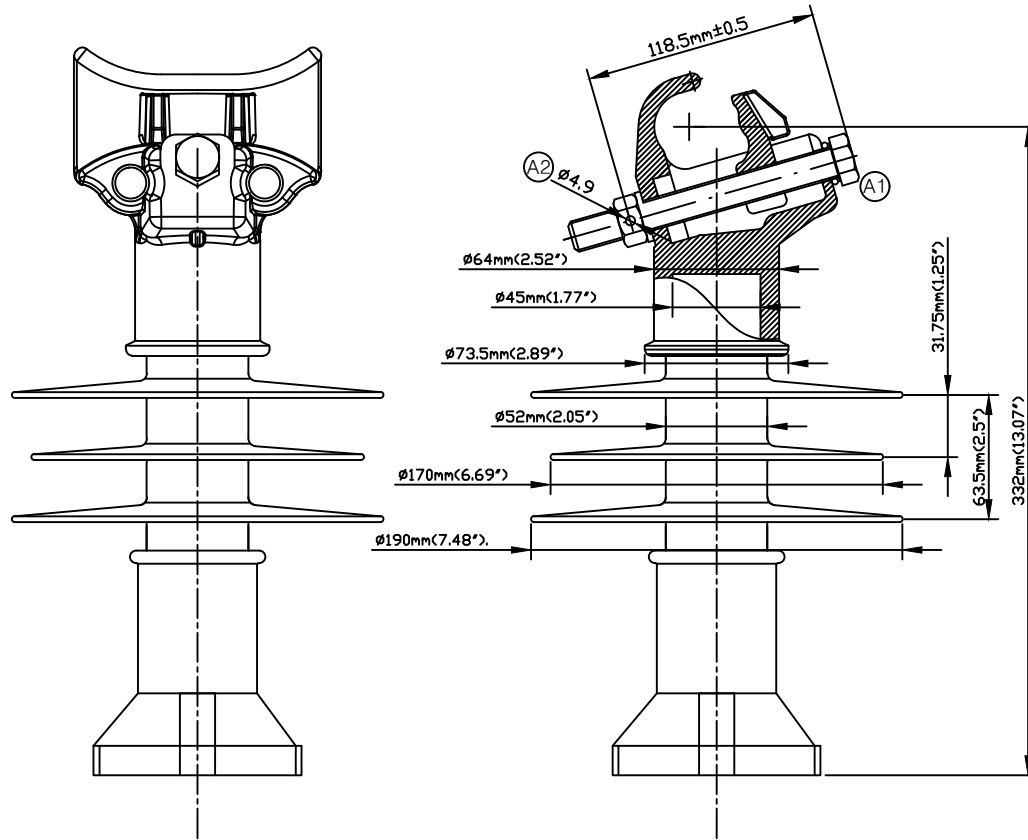
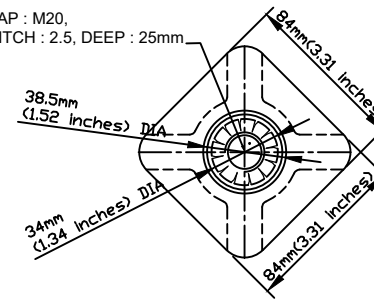


CATALOG NO. LPSC-15SK-HP-M20



TAP : M20,
PITCH : 2.5, DEEP : 25mm



NOTE:

- TOP END FITTING IS MADE FROM ALUMINUM ALLOY & ANODIZED.
- BASE END FITTING IS MADE FROM STEEL FORGED & GALVANIZED.
- FIBERGLASS ROD IS MADE FROM EPOXY RESIN (ECR).
- CLAMP AND STUD BASE DIMENSIONS ARE IN ACCORDANCE WITH ANSI C29.18.
- THE DIA. OF FRP ROD IS 45mm(1.77 inches) SOLID.
- BASE AND INSULATOR ASSEMBLED WITH M20 BOLT AND WASHER.
- THE THICKNESS OF HOT DIP GALVANIZING SHALL BE MINIMUM 79µm ACCORDING TO ASTM A 153.
- THE TOLERANCE ON ALL DIMENSIONS SHALL BE AS FOLLOWS:
 $\pm(0.04d+1.5)$ mm when $d<300$ mm
 $\pm(0.025d+6)$ mm when $d>300$ mm with a maximum of 50mm

REVISIONS

REV	LOCATION	NOTICE	DSN BY	APP BY	DATE
I/R		INITIAL RELEASE	J.H. PARK	C.H. PARK	06/17/2016
A		1. MOVED BOLT POSITION 2. CHANGED FIXED PIN SIZE (Ø5 to -) 3. ADDED MATERIAL DETAILS	B.J. KIM	D.H. YOO	07/25/2024

DIMENSIONS

LEAKAGE DISTANCE	476 mm
DRY ARCING DISTANCE	180 mm
SHEDS Q'TY	3 PCS

MECHANICAL VALUES

SPECIFIED CANTILEVER LOAD	12.5 kN
---------------------------	---------

ELECTRICAL VALUES

Low-Freq. WITHSTAND-WET	60 kV
IMPULSE WITHSTAND-POS	115 kV
IMPULSE WITHSTAND-NEG	128 kV

PACKING INFORMATION

NET WEIGHT EACH	6.0 kg
NO. IN STANDARD PACKAGE	1 PCS

Material : Special Clamp

1. Chemical Analysis (KS D 6008 : 2002) (Unit:wt%)

Element	Cu	Si	Mg	Zn	Fe	Mn
Spec	0.20 ↓	6.5~7.5	0.25~0.45	0.10 ↓	0.20 ↓	0.10 ↓
AC4CH	Ni	Ti	Pb	Sn	Cr	Al
	0.05 ↓	0.20 ↓	0.05 ↓	0.05 ↓	0.05 ↓	Rest

2. Mechanical Properties (KS D 6008 : 2002)

AC4CH-T6	Tensile Strength (kgf/cm ²)	Elongation (%)	Brinell Hardness [HB(10/500)]
	240 ↑	5 ↑	about 85

3. Heat Treatment (KS D 6008 : 2002)

AC4CH-T6	Method	Solution Treatment		Age Hardening Treatment	
		Temperature (°C)	Time (h)	Temperature (°C)	Time (h)
	after Solution Treatment	about 535	about 8	about 155	about 6

Material : Stud Base

1. Chemical Analysis (KS D 3752 : 2019) (Unit:wt%)

Element	C	Si	Mn	P	S
Spec	0.18~0.23	0.15~0.35	0.30~0.60	0.030 ↓	0.035 ↓
S20C					

2. Mechanical Properties (KS D 3752 : 2019)

S20C	Yield Point (kgf/cm ²)	Tensile Strength (kgf/cm ²)	Elongation (%)	Tightening (%)	Hardness (HB)
	25 ↑	41 ↑	28 ↑	-	116 ~ 174

3. Heat Treatment (KS D 3752 : 2019)

S20C	Method	Temperature (°C)
		Normalizing

REPLACEABLE MATERIAL	NO	PART NAME	EA	MATERIAL	DWG NO
PART LISTS					
ORIGINAL DWG	COMMON TOLERANCE	DATE	07/25/2024		
	DECIMAL ANGLE FRACTION	APP DIVISION	R&D Team		
		MATERIAL	CHK BY KC.PARK APP BY DH.YOO		
		HEAT TREATMENT	DSN BY B.J.KIM CHK BY DH.YOO		
RELEVANT DWG	APPLICABLE ITEM	DWG DIVISION	R&D Team	TITLE	Polymer Line Post Insulator for Distribution (15kV HP Special Clamp)
PART NO		CORROSION PROTECTION		SIZE	A3
				DWG NO	LPSC-15SK-HP-M20
				SCALE	1:1
				UNIT	mm
				WEIGHT	
				SHEET	1 OF 1