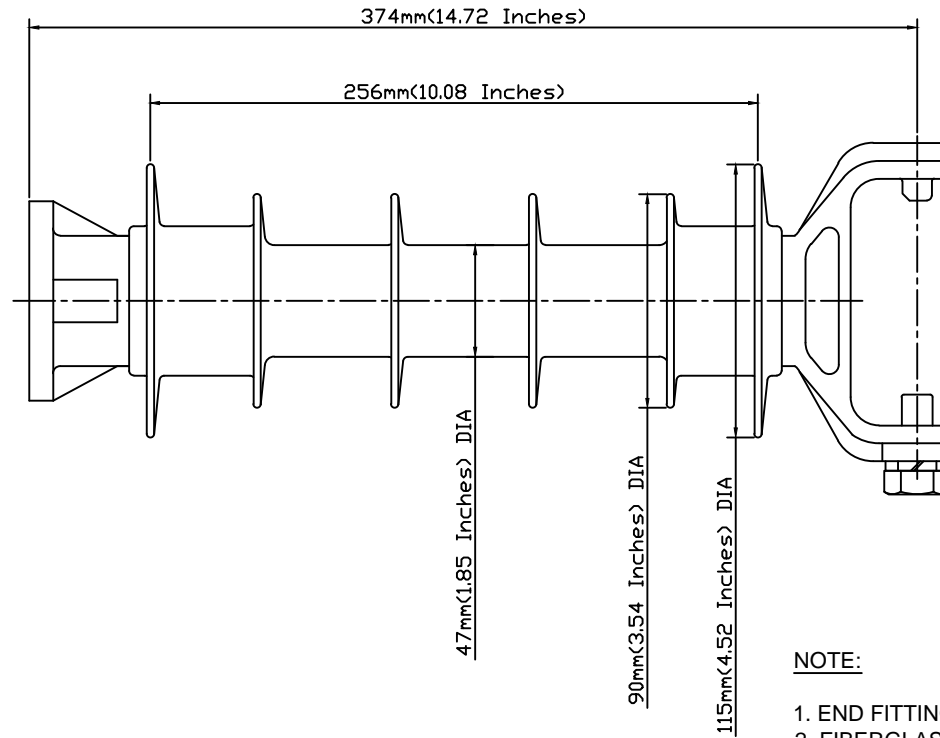
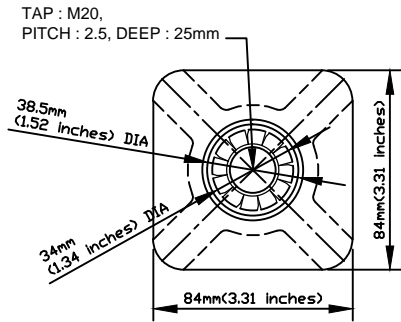


CATALOG NO. LPV-25SK-M20

NO.	DESCRIPTION	DWG. NO.	MATERIAL	Q'TY	FINISH/SIZE	NOTE



DIMENSIONS

LEAKAGE DISTANCE	551 mm(21.69 inches)
DRY ARCING DISTANCE	313 mm(12.32 inches)
SHEDS Q'TY	6 PCS

MECHANICAL VALUES

SPECIFIED CANTILEVER LOAD	12.5 kN(2,800 LB)
Max. DESIGN CANTILEVER LOAD	6 kN(1,350 LB)
TENSILE STRENGTH	22 kN(5,000 LB)

ELECTRICAL VALUES

Low-Freq. FLASHOVER-DRY	122 kV
Low-Freq. FLASHOVER-WET	103 kV
IMPULSE FLASHOVER-POS	208 kV
IMPULSE FLASHOVER-NEG	271 kV

RADIO INFLUENCE VOLTAGE DATA

60 Hz TEST VOLTAGE	15 kV
MAXIMUM RIV @ 1,000kHz	100 uV

PACKING INFORMATION

NET WEIGHT EACH	7.8 kg
NO. IN STANDARD PACKAGE	4 PCS

NOTE:

1. END FITTING ARE MADE FROM CARBON STEEL FORGED & GALVANIZED.
2. FIBERGLASS ROD IS MADE FROM EPOXY RESIN.
3. CLAMP AND STUD BASE DIMENSIONS ARE IN ACCORDANCE WITH ANSI C29.18.
4. THE DIA. OF FRP ROD IS 40mm(1.57inches) SOLID.
5. BASE AND INSULATOR ASSEMBLED WITH M20 BOLT AND WASHER.
6. THE TOLERANCE ON ALL DIMENSIONS SHALL BE AS FOLLOWS:

±(0.04d+1.5)mm when d<300mm

±(0.025d+6)mm when d>300mm with a maximum of 50mm

NO.	DATE	REVISIONS	DESIGNED	APPROVED	REMARKS	DRAWN BY	DESIGNED BY	CHECKED BY	APPROVED BY	SCALE	DATE	NAME	LINE POST INSULATOR FOR TRANSMISSION 25kV VERTICAL LINE POST INSULATOR	REF.NO.	DWG.NO.	SHEET NO
3						J.H.PARK			C.H.PARK	1/1						
2																
1/R	02/21/2017	INITIAL RELEASE	J.H.PARK	C.H.PARK												
NO.	DATE	REVISIONS	DESIGNED	APPROVED	REMARKS							REF.NO.		SHEET NO		
												DWG.NO.	LPV-25SK-M20			