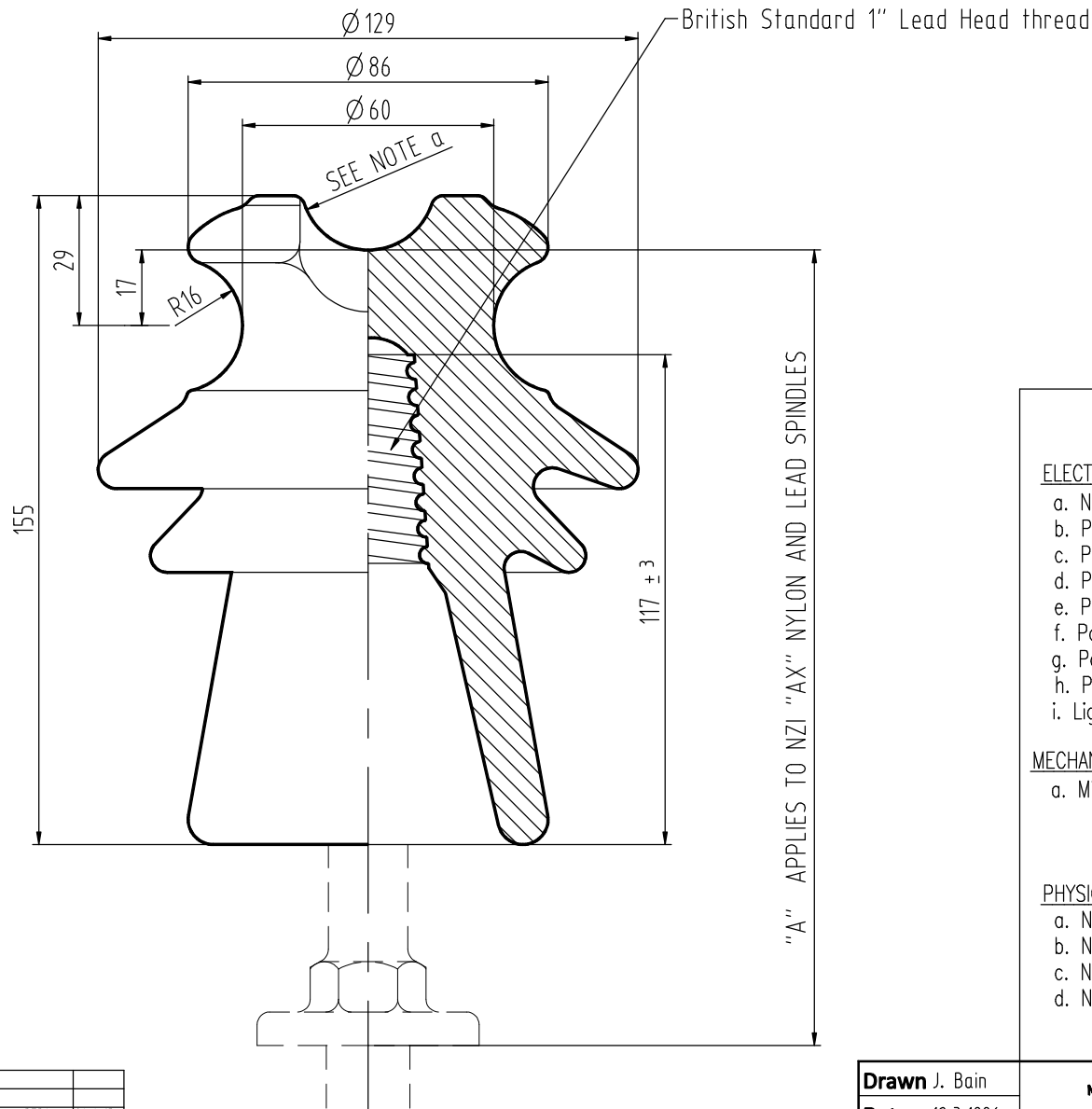


ALL DIMENSIONS IN MILLIMETRES - DO NOT SCALE - IF IN DOUBT PLEASE ASK



Cat. #	Groove \varnothing	Pin Type	Dimension "A"
1130/26	26mm	142b 1" LH	186
1130/26	26mm	1" Nylon	186
1130/32	32mm	142b 1" LH	190
1130/32	32mm	1" Nylon	190

SPECIFY ON ORDER

a. Top groove diameter ($\varnothing 26$ or $\varnothing 32$)

Technical Specification

ELECTRICAL CHARACTERISTICS

	DESIGNED VALUES
a. Nominal System Voltage	11 kV
b. Power Frequency withstand voltage – dry	65 kV
c. Power Frequency withstand voltage – wet (vertical)	35 kV
d. Power Frequency withstand voltage – wet (horizontal)	40 kV
e. Power Frequency flashover voltage – dry	70 kV
f. Power Frequency flashover voltage – wet (vertical)	45 kV
g. Power Frequency flashover voltage – wet (horizontal)	50 kV
h. Power Frequency withstand puncture voltage	130 kV
i. Lightning Impulse withstand voltage – dry (1"lead head pin)	99 kV

MECHANICAL CHARACTERISTICS

a. Minimum failing load – Cantilever	7. kN
--------------------------------------	-------

PHYSICAL CHARACTERISTICS

a. Nominal minimum creepage distance	250 mm
b. Nominal protected creepage distance	125 mm
c. Nominal flashover distance	150 mm
d. Nominal net weight	1.5 kg

Issue	Mod. No.	Date
G	3534	24.4.13
F	3298	23.9.10
E	3290	10.5.10
D	3158	20.6.05

Drawn J. Bain
Date 12.3.1996

FIRST ANGLE PROJECTION

NEW ZEALAND INSULATORS



TEMUKA

NEW ZEALAND INSULATORS LTD
Tel: +64-3-687 8100
Fax: +64-3-615 8125
e-mail: sales@nzinsulators.co.nz

Cat. N°. 1130W
11kV PIN TYPE INSULATOR

S1022-24/G