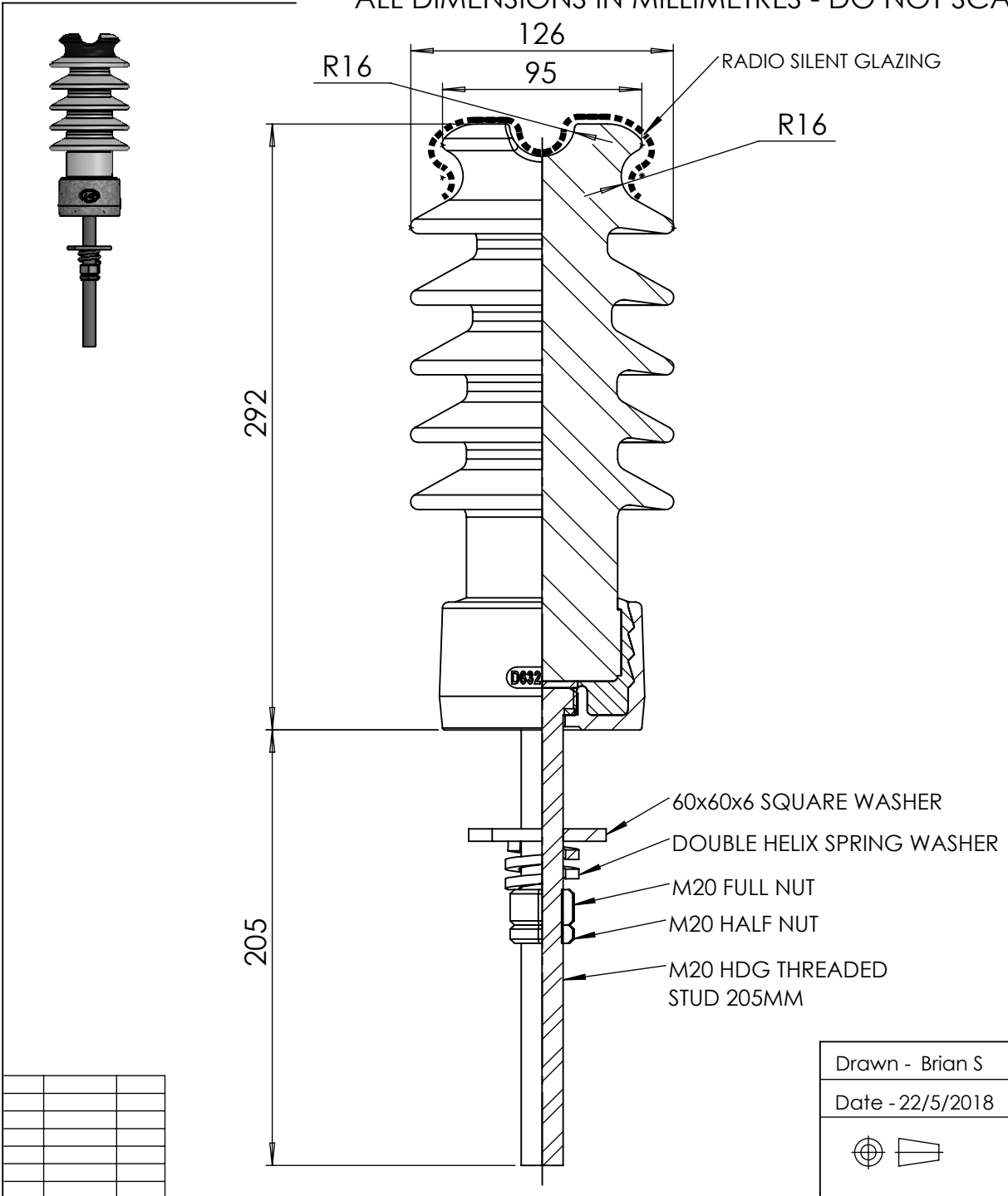


ALL DIMENSIONS IN MILLIMETRES - DO NOT SCALE - PLEASE ASK IF IN DOUBT



TECHNICAL SPECIFICATIONS

SYSTEM HIGHEST VOLTAGE 11 kV

WITHSTAND TEST VOLTAGES

- a. Power frequency - wet withstand (Vertical) 65 kV
- b. Power frequency - wet withstand (Horizontal) 69 kV
- c. Power frequency - dry withstand 90 kV

FLASHOVER TEST VOLTAGES

- a. Power frequency - dry flashover 95 kV
- b. Power frequency - wet flashover (Vertical) 72 kV
- c. Power frequency - wet flashover (Horizontal) 82 kV

- a. Lightning impulse - dry (Estimated) 105 kV

MINIMUM FAILING LOADS

- a. Cantilever 10 kN
- b. Torsion 600 Nm
- c. Tension 20 kN

CREEPAGE DISTANCES

- a. Total 400 mm
- b. Protected 90 mm
- c. Flashover 220 mm

Pollution Performance No
(ESAA Publication D (B) 19-1975)

Drawn - Brian S	NEW ZEALAND INSULATORS  TEMUKA	NEW ZEALAND INSULATORS LTD Tel: +64-3-615 0085 Fax: +64-3-615 8125 e-mail: sales@nzinsulators.co.nz
Date - 22/5/2018	 LINE POST INSULATOR 400 mm CREEPAGE - LONG STUD 205MM	D632-0596/A