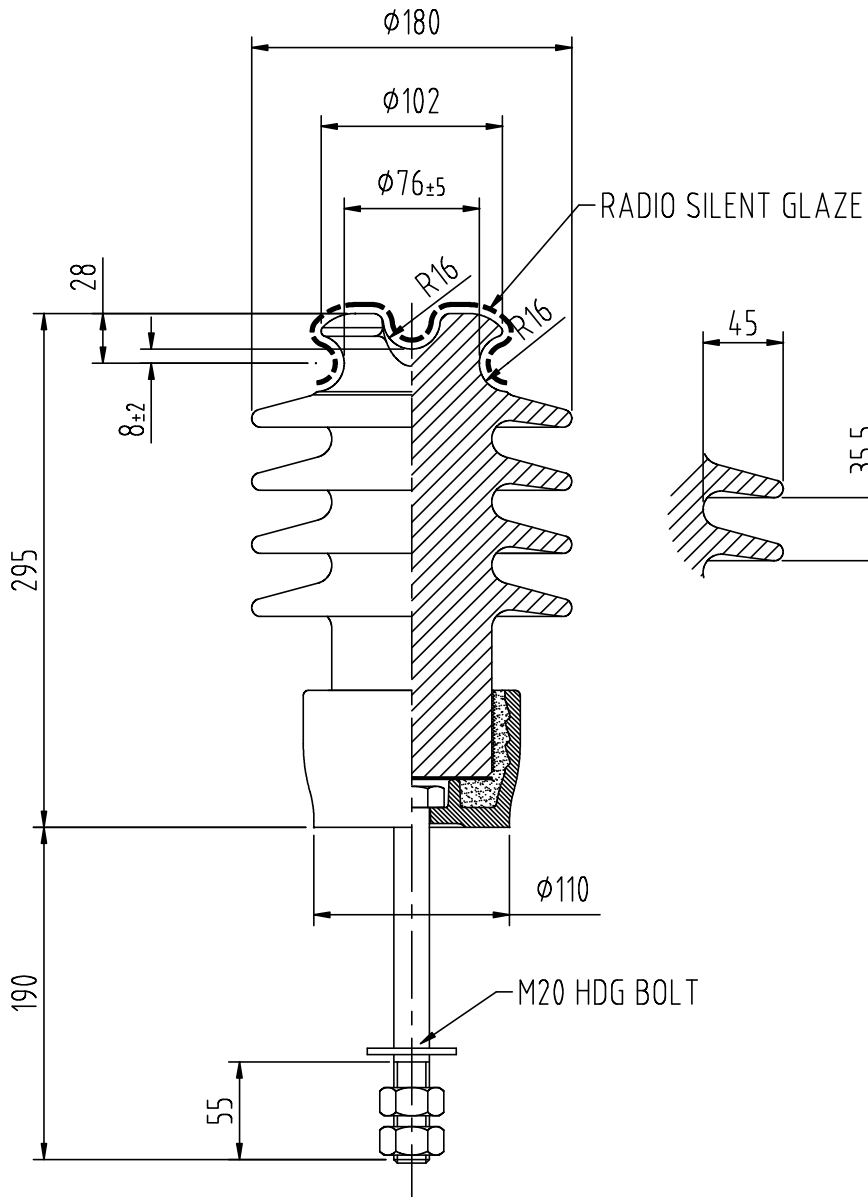


ALL DIMENSIONS IN MILLIMETRES - DO NOT SCALE - IF IN DOUBT ASK




Technical Specification

	DESIGNED VALUES
<u>SYSTEM HIGHEST VOLTAGE</u>	12 kV
<u>WITHSTAND TEST VOLTAGES</u>	
a. Power frequency – wet (Vertical)	55 kV
b. Power frequency – wet (Horizontal)	60 kV
c. Power frequency – dry	90 kV
d. Lightning Impulse – dry (Calculated)	95 kV
<u>FLASHOVER TEST VOLTAGES</u>	
a. Power frequency – wet (Vertical)	65 kV
b. Power frequency – wet (Horizontal)	70 kV
c. Power frequency – dry	93 kV
<u>MINIMUM FAILING LOADS</u>	
a. Cantilever (Upright)	17.5 kN
<u>CREEPAGE DISTANCES</u>	
a. Total	420 mm
b. Protected	150 mm
c. Flashover	172 mm
Gross weight	8.2 kg
Pollution Performance N° (ESAA Publication D (b) 19-1975)	= --

B	3735	13/6/18
Issue	Mod. No.	Date

Drawn J. Bain
Date 27.9.2007



FIRST ANGLE PROJECTION



NZ Insulators Ltd.

New Zealand Insulators Ltd.
Tel: +64-3-615 0085
Fax: +64-3-615 8125
e-mail: sales@nzinsulators.co.nz

12kV TIE TOP LINE POST
190 mm FIXED LENGTH STUD TYPE

D632-0565/B