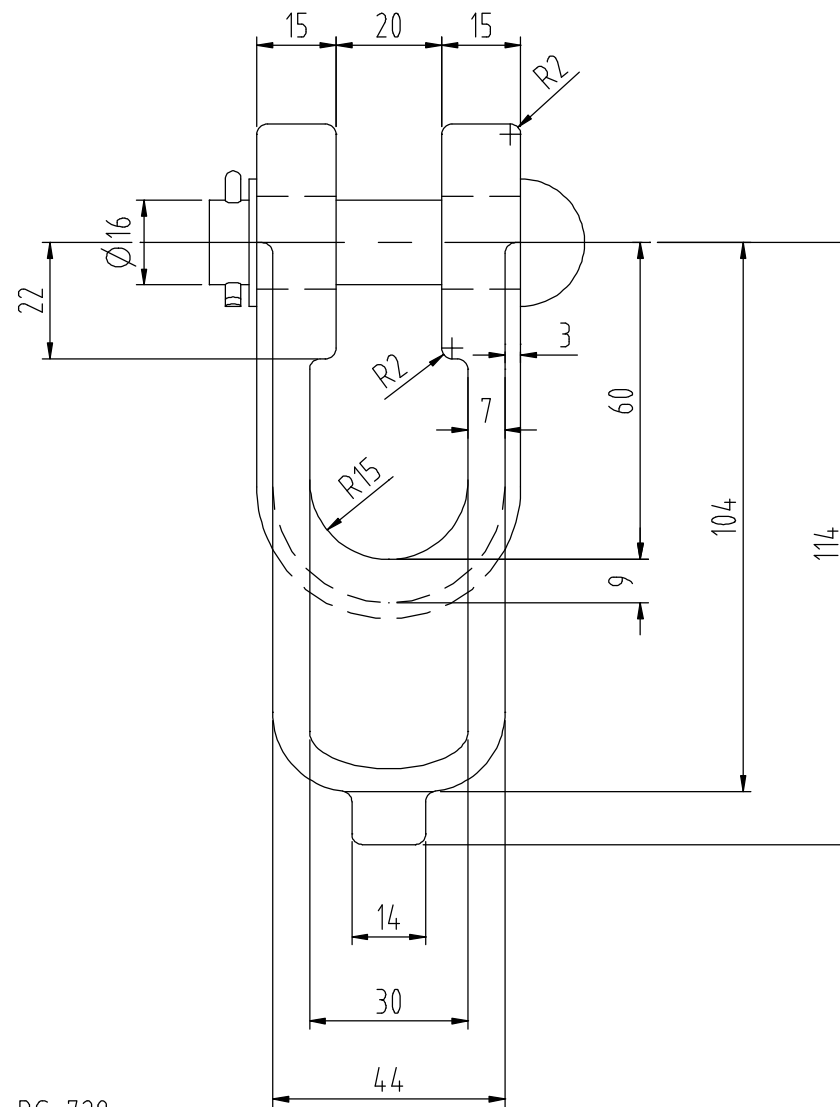
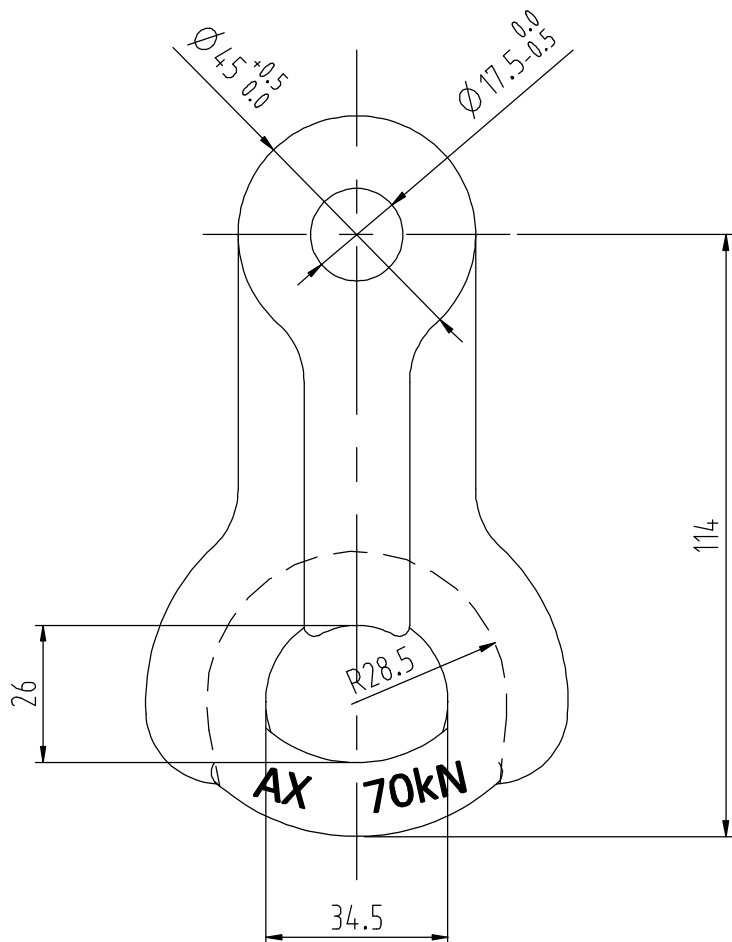


ALL DIMENSIONS IN MILLIMETRES - DO NOT SCALE - IF IN DOUBT PLEASE ASK



**NOTE**

1. THE BODY IS MADE OF ALUMINIUM ALLOY.
2. THE COTTER PIN IS MADE OF STAINLESS STEEL.
3. OTHER PARTS ARE MADE OF HOT-DIP GALVANISED STEEL TO BS 729.
4. ULTIMATE TENSILE STRENGTH IS NOT LESS THAN 70kN.
5. NET WEIGHT: 0.47kg APPROX.
6. PART NUMBER: 536342

Issue	Mod. No.	Date

Drawn J.B  
Date 14.3.2012

NEW ZEALAND INSULATORS



TEMUKA

NEW ZEALAND INSULATORS LTD  
Tel: +64-3-687 8100  
Fax: +64-3-615 8125  
e-mail: sales@nzinsulators.co.nz



**AX CLEVIS THIMBLE**  
ALUMINIUM ALLOY - 70kN - TYPE TC-XL-7B

**D374-2140/A**